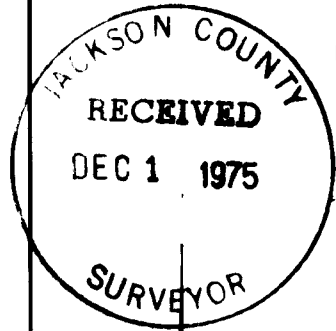


75-16418

6217

THUNDERBIRD HEIGHTS SUBDIVISION

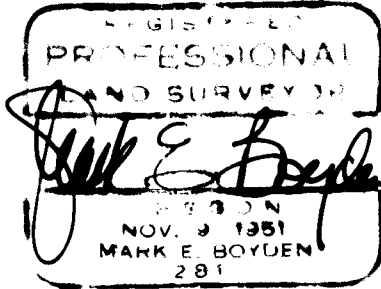
IN THE CITY OF ASHLAND
Located in the SW 1/4 of sec. 5, T39S, R1E, W.M., Jackson
County, Oregon



POST MONUMENTATION MAP
NOV. 26, 1975

DEFERRED MONUMENTS

- ⊙ SET 8" DIA. x 24" CONCRETE POST WITH 2" BRONZE CAP IN MON. CASE
- SET 3/4" x 24" REBAR
- ✕ SET 3/4" x 30" REBAR
- FOUND ORIGINAL OUTSIDE BOUNDARY MONUMENTS



SCALE 1"=100'

I MARK E. BOYDEN A DULY REGISTERED SURVEYOR OF THE STATE OF OREGON HEREBY CERTIFY THAT THIS MAP REPRESENTS A SURVEY MADE UNDER MY DIRECTION and THAT THE MONUMENTS CONFORM TO ORS 92.060

EXAMINED and APPROVED

11-26-75
DATE

Allen A. Young
CITY ENGINEER

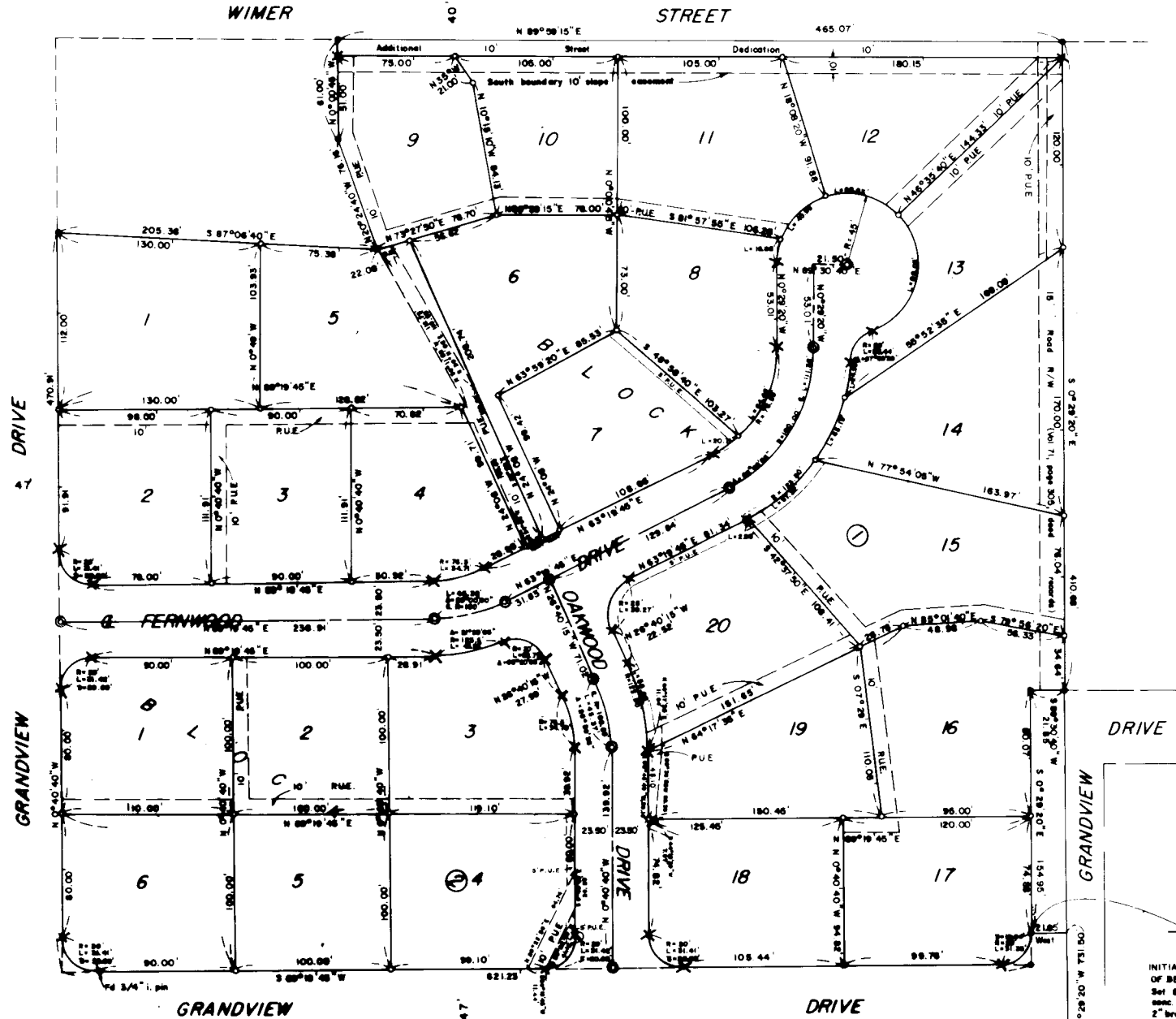
STATE OF OREGON SS
COUNTY OF JACKSON

THE WITHIN INSTRUMENT RECEIVED AND FILED AT 1:24 O'CLOCK P.M. THE 28 DAY OF November 19 75

RECORDED IN OFFICAL RECORDS, JACKSON CO. OREGON

Harry Chipman
COUNTY CLERK

Loene H. McCrack
DEPUTY



INITIAL POINT OF BEGINNING
Set 8" dia x 24" conc. mon. with 2" bronze disk marked, I.P. T BIRD HEIGHTS

6217