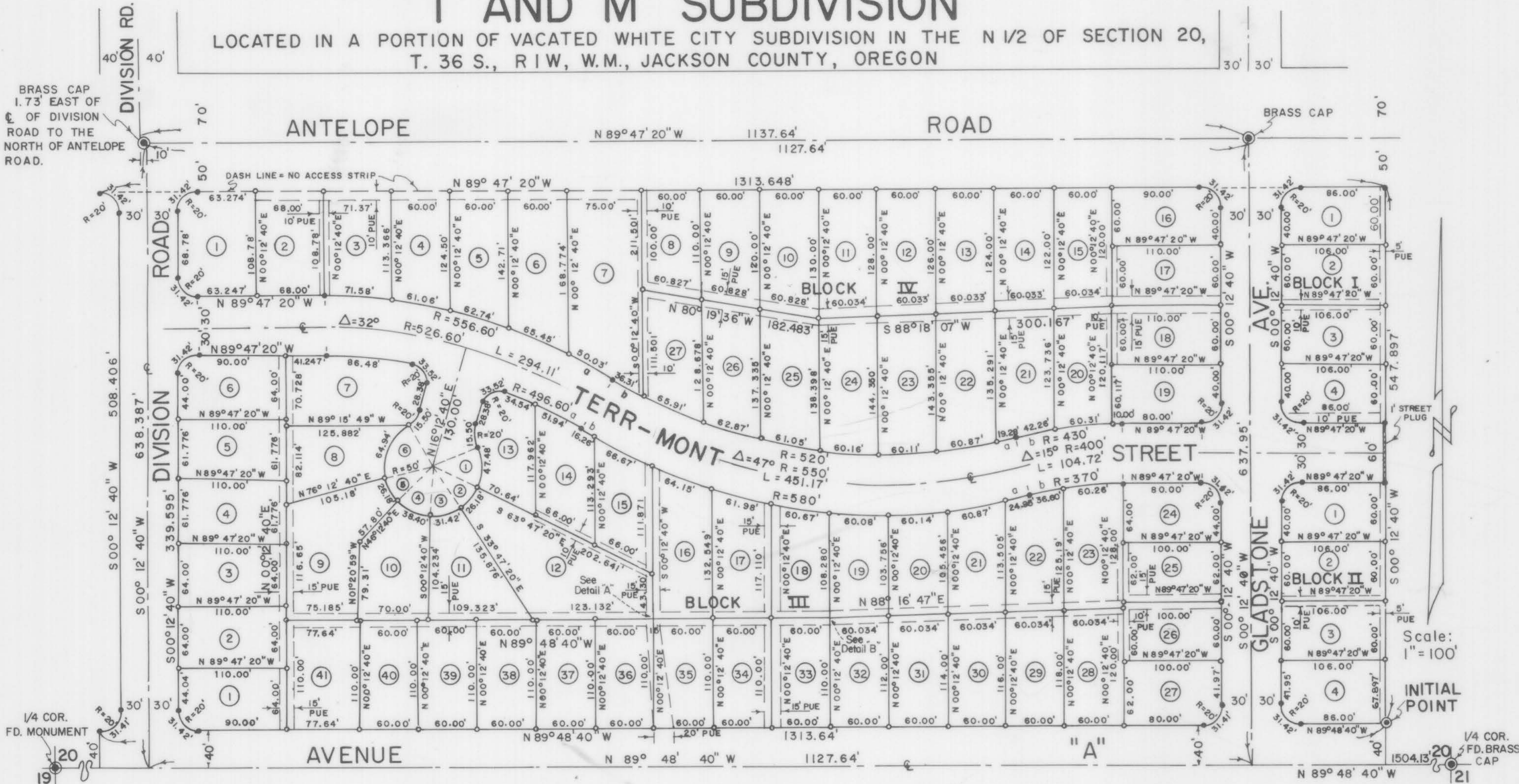


T AND M SUBDIVISION

LOCATED IN A PORTION OF VACATED WHITE CITY SUBDIVISION IN THE N 1/2 OF SECTION 20,
T. 36 S., R. 1 W., W.M., JACKSON COUNTY, OREGON

ENGINEER'S CERTIFICATE



STATE OF OREGON
COUNTY OF JACKSON S.S.
I, PER E. ZIMMERLUND, A DULY REGISTERED ENGINEER IN THE STATE OF OREGON, BEING FIRST DULY SWORN, DO HEREBY CERTIFY THAT I HAVE CORRECTLY SURVEYED AND MARKED WITH PROPER MONUMENTS AS PROVIDED BY LAW, THE TRACT OF LAND HEREON SHOWN AND THE SAID PLAT IS A CORRECT REPRESENTATION OF THE SAME AND THE FOLLOWING IS AN ACCURATE DESCRIPTION OF THE BOUNDARY LINES:
COMMENCING AT A BRASS CAP MONUMENTING THE QUARTER CORNER COMMON TO SECTIONS 20 & 21, T. 36 S., R. 1 W., W.M., JACKSON COUNTY, OREGON; THENCE NORTH 89° 48' 40" WEST ALONG THE CENTERLINE OF AVENUE "A" 1504.13 FEET; THENCE NORTH 00° 12' 40" EAST 40.00 FEET TO THE NORTH RIGHT OF WAY LINE OF AVENUE "A" AND THE INITIAL POINT, MONUMENTED WITH A BRASS DISK SET IN CONCRETE; THENCE SOUTH 00° 12' 40" WEST 40.00 FEET TO THE CENTERLINE OF AVENUE "A"; THENCE NORTH 89° 48' 40" WEST ALONG THE CENTERLINE OF AVENUE "A" 1313.641 FEET; THENCE NORTH 00° 12' 40" EAST 40.00 FEET; THENCE ALONG A 20 FOOT RADIUS CURVE TO THE LEFT 31.41 FEET, THE LONG CHORD OF WHICH BEARS NORTH 45° 12' EAST 28.28 FEET; THENCE NORTH 00° 12' 40" EAST 508.406 FEET; THENCE ALONG A 20 FOOT RADIUS CURVE TO THE LEFT 31.42 FEET, THE LONG CHORD OF WHICH BEARS NORTH 44° 47' 20" WEST 28.28 FEET TO THE SOUTH RIGHT OF WAY LINE OF ANTELOPE ROAD; THENCE SOUTH 89° 47' 20" EAST ALONG THE SOUTH RIGHT OF WAY LINE OF ANTELOPE ROAD 1313.648 FEET; THENCE SOUTH 00° 12' 40" WEST 547.897 FEET TO THE INITIAL POINT.

Per E. Zimmerlund
ENGINEER
Dorothy J. McQuat
DOROTHY J. McQUAT
NOTARY PUBLIC - OREGON
My Commission Expires May 18, 1976

SUBSCRIBED AND SWORN TO BEFORE ME THIS
27 DAY OF May, 1975 A.D.
Dorothy J. McQuat
NOTARY PUBLIC OF OREGON
MY COMMISSION EXPIRES THE 18 DAY OF May, 1976 A.D.

EXAMINED AND APPROVED BY THE PLANNING COMMISSION
THIS 17 DAY OF October, 1975, AND THIS PLAT IS IN CONFORMANCE WITH
THE TENTATIVE PLAT.

Laurne Hopper SECRETARY
Dorothy Simpson CHAIRMAN

FOR ORDER OF THE JACKSON COUNTY COMMISSIONERS APPROVING THIS PLAT SEE
VOLUME _____, PAGE _____ OF COUNTY COMMISSIONERS JOURNAL OF PROCEEDINGS.

BY _____ DEPUTY
Harry Cisneros COUNTY CLERK

ROGUE RIVER IRRIGATION DISTRICT, IN REGULAR SESSION HAS EXAMINED AND
APPROVED THIS PLAT ON THIS 7 DAY OF July, 1975.
E. J. ... SECRETARY
... PRESIDENT

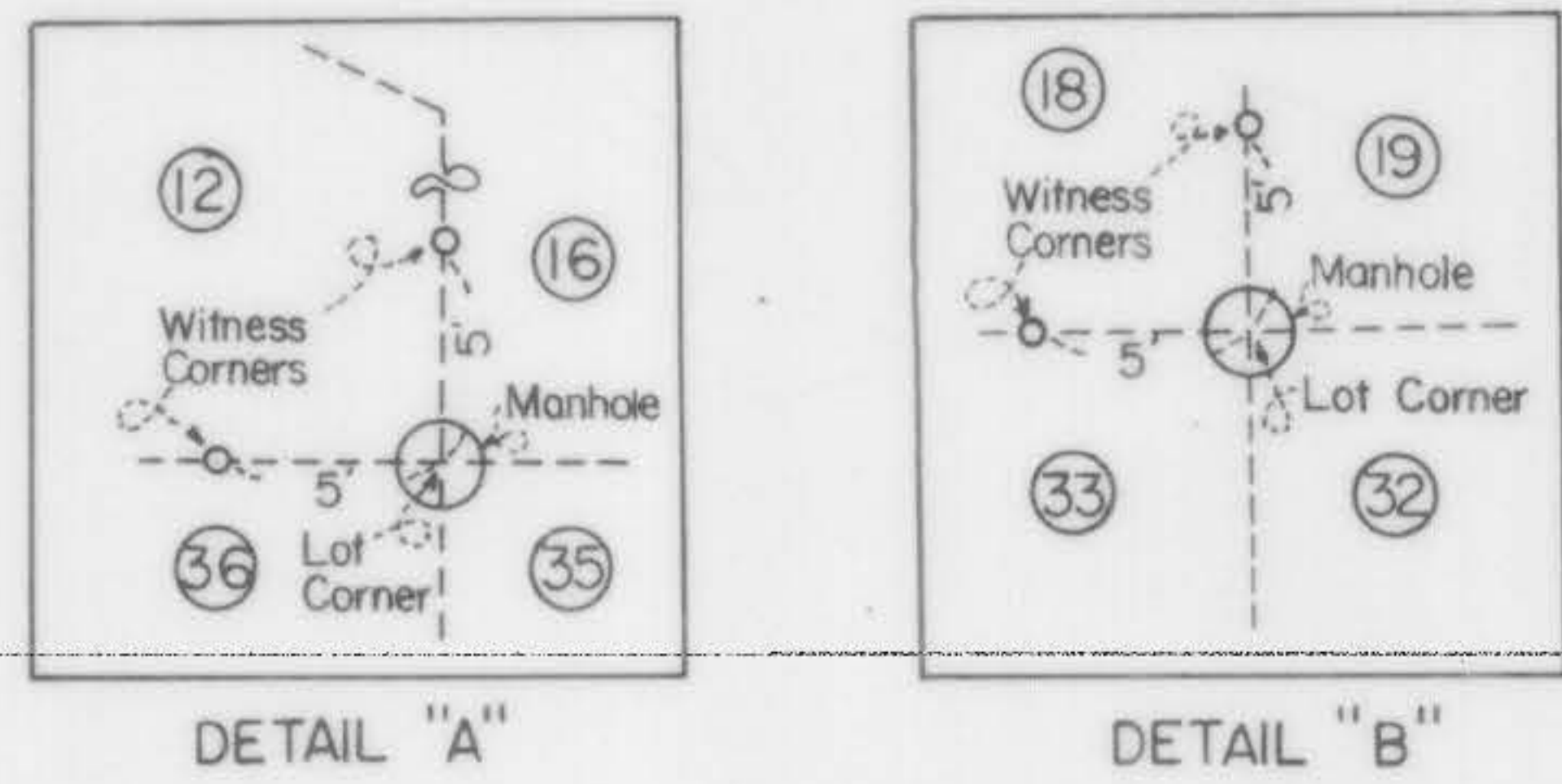
EXAMINED AND APPROVED FOR THE USE OF COMMUNITY WATER FACILITIES AND
COMMUNITY SEWAGE DISPOSAL FACILITIES THIS 2nd DAY OF July, 1975 A.D.
John N. Wright COUNTY HEALTH OFFICER

EXAMINED AND APPROVED THIS 2nd DAY OF July, 1975 A.D.
Ray E. Stewart DIRECTOR OF ASSESSMENT AND TAXATION

I HAVE EXAMINED THIS PLAT AND IT IS TECHNICALLY CORRECT ON THIS DATE
October 16, 1975 A.D.
Charles A. McQuat COUNTY SURVEYOR
Charles B. Gubson DEPUTY

FILED FOR RECORD THIS 22 DAY OF October, 1975, AT 3:00 O'CLOCK
P. M. AND RECORDED IN VOLUME 12 OF MAPS OR PLATS ON PAGE 47 OF
RECORDS IN JACKSON COUNTY, OREGON.

COUNTY CLERK *Harry Cisneros* DEPUTY



BLOCK III		BLOCK IV	
LOT NUMBER	DELTA ANGLE	LOT NUMBER	DELTA ANGLE
7	9° 58' 40"	3	7° 22' 06"
13	3° 59' 06"	4	6° 17' 08"
14a	5° 59' 34"	5	6° 27' 30"
14b	1° 36' 23"	6	5° 44' 15"
15	6° 35' 10"	7a	5° 09' 00"
16	6° 20' 14"	7b	4° 00' 03"
17	5° 07' 22"	27	7° 15' 44"
18	5° 58' 36"	26	6° 55' 36"
19	5° 58' 06"	25	6° 43' 36"
20	5° 56' 28"	24	6° 37' 43"
21	6° 00' 47"	23	6° 37' 23"
22a	5° 27' 53"	22	6° 42' 25"
22b	5° 40' 05"	21a	2° 07' 28"
23	9° 19' 55"	21b	5° 37' 52"
		20	8° 02' 11"
		19	1° 19' 57"

① Δ = 54° 24' 55" R = 50'	④ Δ = 44° R = 50'
② Δ = 30° R = 50'	⑤ Δ = 30° R = 50'
③ Δ = 36° R = 50'	⑥ Δ = 74° 24' 55" R = 50'

PUE = PUBLIC UTILITY EASEMENT.
FOR SEWER, WATER, GAS, TELEPHONE
CABLE T.V., POWER.
BASIS OF BEARING: ϵ OF
ANTELOPE ROAD PER CASCADE
VILLAGE SUBD. UNIT NO. 3.
LEGEND
● = MON. FD.
• = R/W. PIN
○ = LOT-COR. SET (5/8" X 30" I. ROD.)

DEDICATION

KNOW ALL MEN BY THESE PRESENTS, THAT WHITE CITY CORPORATION, A DULY ORGANIZED CORPORATION OF THE STATE OF OREGON AND TERR-MONT DEVELOPMENTS, INC., A DULY ORGANIZED CORPORATION OF THE STATE OF OREGON ARE OWNERS IN FEE SIMPLE OF THE LAND DESCRIBED HEREON AND HAVE CAUSED THE SAME TO BE SURVEYED AND PLATTED INTO LOTS, BLOCKS AND STREETS AS SET FORTH AND THAT THIS PLAT IS A CORRECT REPRESENTATION OF SAID SUBDIVISION AND HEREBY DEDICATE AND CONVEY TO THE PUBLIC USE OF ALL STREETS SHOWN HEREON. SAID SUBDIVISION BEING SUBJECT TO EASEMENTS, UTILITY EASEMENTS AND STREET PLUGS SHOWN HEREON, AND DO DESIGNATE SAID SUBDIVISION AS T & M SUBDIVISION.
IN WITNESS WHEREOF, WHITE CITY CORPORATION PURSUANT TO A RESOLUTION OF ITS BOARD OF DIRECTORS, DULY AND LEGALLY ADOPTED, HAS CAUSED THESE PRESENTS TO BE SIGNED BY ITS OFFICERS ON THIS 30th DAY OF JUNE, 1975 A.D.
Mildred C. Bigham ASSISTANT SECRETARY
Charles ... VICE PRESIDENT

IN WITNESS WHEREOF, TERR-MONT DEVELOPMENTS, INC. HAS CAUSED THESE PRESENTS TO BE SIGNED BY ITS OFFICERS ON THIS 30th DAY OF JUNE, 1975 A.D.
James A. Welch PRESIDENT
Maynard W. Hadley VICE PRESIDENT

STATE OF OREGON S.S.
COUNTY OF JACKSON
June 30, 1975 A.D.
PERSONALLY APPEARED THE ABOVE-NAMED, GORDON H. DOTSON, VICE PRESIDENT, AND MILDRED C. BIGHAM, ASSISTANT SECRETARY, REPRESENTING WHITE CITY CORPORATION; AND JAMES A. WELCH, PRESIDENT, AND MAYNARD W. HADLEY, VICE PRESIDENT, REPRESENTING TERR-MONT DEVELOPMENTS, INC. AND ACKNOWLEDGE THE FOREGOING INSTRUMENT TO BE THEIR FREE AND VOLUNTARY ACT AND DEED.

Juanita L. Gosnell NOTARY PUBLIC OF OREGON
MY COMMISSION EXPIRES THE 19 DAY OF March, 1976 A.D.

Juanita L. Gosnell
JUANITA L. GOSNELL
NOTARY PUBLIC - OREGON
My Commission Expires March 19, 1976

I HEREBY CERTIFY THAT THIS PLAT IS AN EXACT COPY OF THE "T AND M SUBDIVISION."
Per E. Zimmerlund ENGINEER

SURVEY NARRATIVE TO COMPLY WITH PARA. 209.250 O. R. S.

SURVEY FOR: Mr. Maynard W. Hadley
449 Black Oak Drive
Medford, Oregon 97501
and
Mr. James A. Welsh, Jr.
2444 Ross Lane
Medford, Oregon 97501

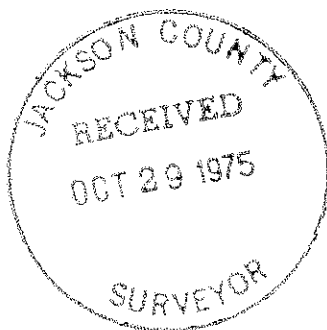
LOCATION: In the North half of Section 20, Township 36 South, Range 1 West, of the Willamette Meridian, Jackson County, Oregon.

PURPOSE: To survey and monument that tract of land known as the T and M Subdivision.

PROCEDURE: Beginning at the East Quarter Corner of Section 20, monumented with a brass cap, I then sight the West Quarter Corner of Section 20 and run $N89^{\circ}48'40''W$ along the East-West center section line and the centerline of Avenue "A" 1504.13 feet; thence I run $N00^{\circ}12'40''E$ 587.897' thus establishing the East boundary of T and M Subdivision. The South boundary of T and M Subdivision being the East-West centerline of Section 20 and the centerline of Avenue "A" as established above. To ascertain the North boundary of T and M Subdivision, being the South right-of-way line of Antelope Road, I used the brass caps at the intersections of Division Road and Gladstone Avenue with Antelope Road as shown on the attached plat. The West right-of-way line of Division Road, the centerline of which is $S89^{\circ}47'40''E$ 10 feet from the centerline of Division Road lying North of Antelope Road, being the West boundary of T and M Subdivision.

All bearings per Cascade Village Unit No. 3.

Survey was executed with a Wild T-16ED Transit Theodolite and 200.00 foot steel chain.



October, 1975