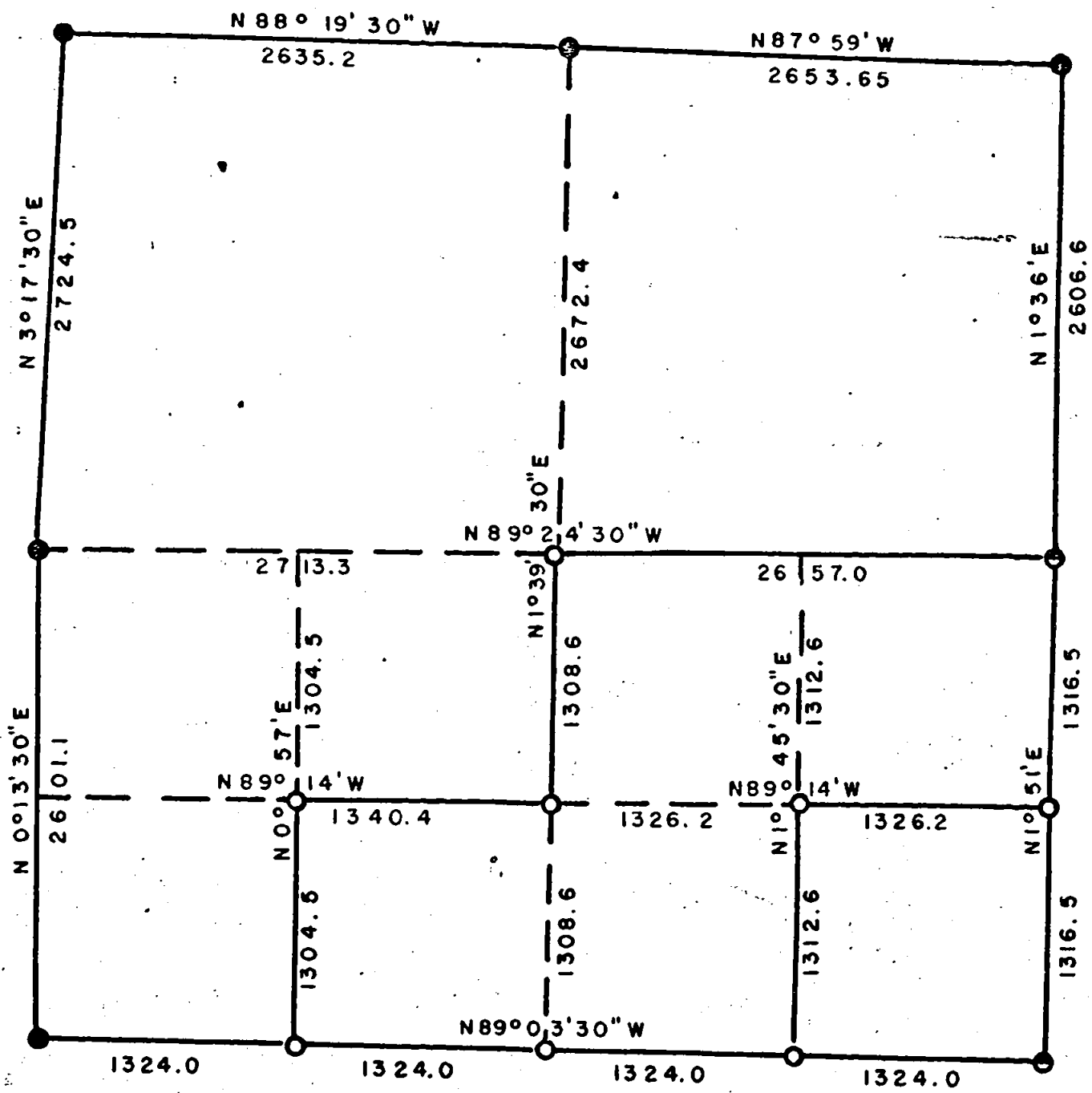


SEC 1 TWP 35 S R 3 E W. M.



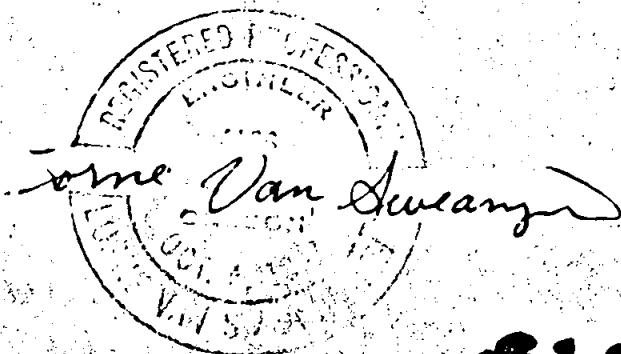
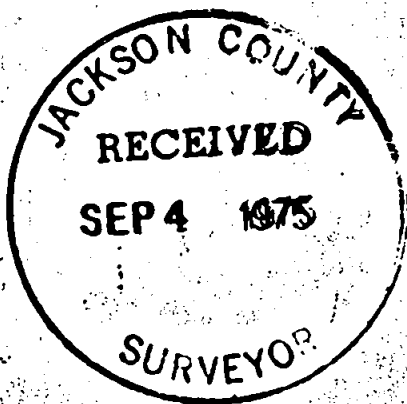
DATE JULY, 1975

SCALE 1" = 1000'

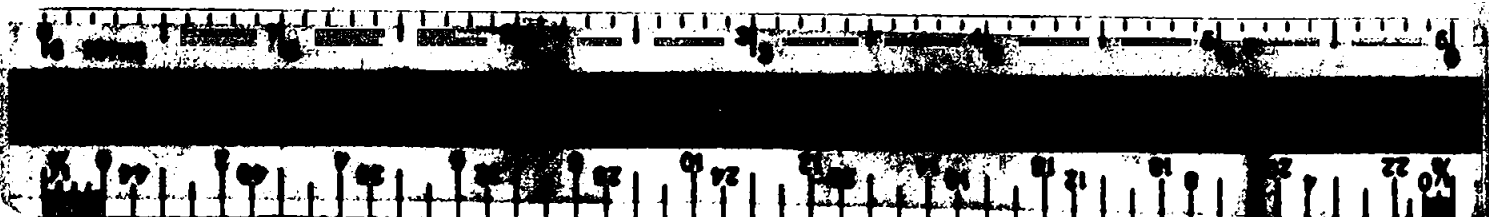
C. S. BRASS CAP ●

U. S. BRASS CAP ●

RE 4186 ALUM. CAP ○



6107



6107

SECTION 1, TOWNSHIP 35 SOUTH, RANGE 3 EAST  
WILLAMETTE MERIDIAN

July, 1975

NARRATIVE:

OBJECT: For Medford Resources Corporation. To subdivide out Medford Resources Corporation land and monument corners.

Found following evidence:

NW Corner	United States Cadastral Brass Cap and Bearing Trees.
N $\frac{1}{4}$ Corner	" " " " " " "
NE Corner	" " " " " " "
E $\frac{1}{4}$ Corner	County Surv. Brass Cap and Bearing Trees.
SE Corner	" " " " " " "
S $\frac{1}{4}$ Corner	RE 4186 Alum. Cap and Bearing Trees.
SW Corner	United States Cadastral Brass Cap and Bearing Trees.
W $\frac{1}{4}$ Corner	" " " " " " "

Ran transit and chain traverse random line along East, North, and West lines, tying to previous survey of Section 12, Township 35 South, Range 3 East, Willamette Meridian, for South line. Basis of bearings are from solar observations.

NORTH LINE: Bearing West half S 88<sup>0</sup>19'30" E  
 0.0 feet NW Corner  
 2635.2 feet N $\frac{1}{4}$  Corner

Bearing East half S 87<sup>0</sup>59' E  
 0.0 feet N $\frac{1}{4}$  Corner  
 2653.65 feet NE Corner

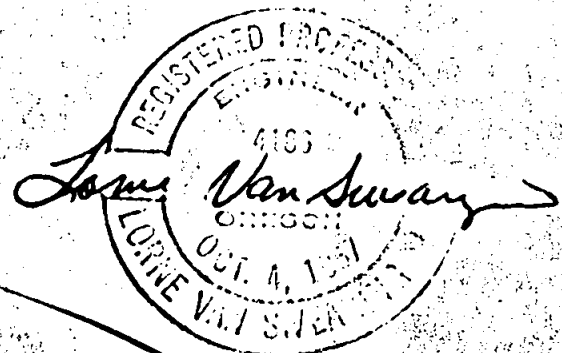
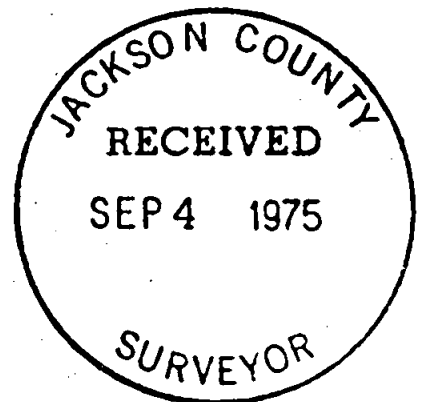
EAST LINE: Bearing North Half S 1<sup>0</sup>36' W  
 0.0 feet NE Corner  
 2606.6 feet E $\frac{1}{4}$  Corner

Bearing South half S 1<sup>0</sup>51' W  
 0.0 feet E $\frac{1}{4}$  Corner  
 1316.5 feet Set South 1/16 Between Section 1, Township 35 South, Range 3 East, Willamette Meridian, and Section 6, Township 35 South, Range 4 East, Willamette Meridian, 5/8"x30" Rebar with Alum. Cap Stamped: RE 4186  
 S1 1/16 S6  
 R3E R4E  
 Scribed RE 4186 BT Bearing Trees  
 9" White Fir S61<sup>0</sup>E 19.0'  
 12" Douglas Fir N72<sup>0</sup>W 28.8'  
 2633.0 feet SE Corner

SOUTH LINE: Bearing N 89<sup>0</sup>03'30" W  
 0.0 feet SE Corner  
 1324.0 feet Set East 1/16 Corner Between Section 1 and Section 12 5/8"x30" Rebar with Alum. Cap Stamped: RE 4186

S1  
 E 1/16  
 S12  
 Scribed RE 4186 BT Bearing Trees  
 12" Douglas Fir N8<sup>0</sup>W 5.5'  
 10 $\frac{1}{2}$ " Ponderosa Pine S65<sup>0</sup>E 17.5'  
 2648.0 feet S $\frac{1}{4}$  Corner  
 3972.0 feet Set West 1/16 Corner Between Section 1 and Section 12 5/8"x30" Rebar with Alum. Cap Stamped: RE 4186  
 S1  
 W 1/16  
 S12

Scribed RE 4186 BT's  
 9 $\frac{1}{2}$ " Douglas Fir N65<sup>0</sup>W 17.2'  
 15" Douglas Fir S10<sup>0</sup>W 11.5'  
 5296.0 feet SW Corner



S1 T35 3E

SECTION 1, TOWNSHIP 35 SOUTH, RANGE 3 EAST  
WILLAMETTE MERIDIAN

6107

July, 1975

Continued - Page 2

WEST LINE: Bearing South half N  $0^{\circ}13'30''$  E  
0.0 feet SW Corner  
2601.1 feet W $\frac{1}{4}$  Corner

Bearing North half N  $3^{\circ}17'30''$  E  
0.0 feet W $\frac{1}{4}$  Corner  
2724.5 feet NW Corner

INTERIOR LINES: From East  $\frac{1}{4}$  Corner Ran N  $89^{\circ}24'30''$  W  
2657.0 feet Set C $\frac{1}{4}$  Corner 5/8"x30" Rebar with Alum. Cap Stamped: RE 4186  
C $\frac{1}{4}$   
S1

Scribed RE 4186 BT's  
20 $\frac{1}{2}$ " Douglas Fir N  $84^{\circ}$  W 22.4'  
29 $\frac{1}{2}$ " Douglas Fir N  $56^{\circ}$  E 11.3'

From C $\frac{1}{4}$  Corner Ran S  $1^{\circ}39'30''$  W 1308.6 feet  
Set CS1/16 Corner 5/8"x30" Rebar with Alum. Cap Stamped: RE 4186  
CS 1/16  
S1

Scribed RE 4186 BT's  
7" Douglas Fir S  $32^{\circ}$  W 18.0'  
11" Douglas Fir N  $4^{\circ}$  E 19.9'

From CS1/16 Ran N  $89^{\circ}14'$  W 1340.4 feet  
Set SW1/16 Corner 5/8"x30" Rebar with Alum. Cap Stamped: RE 4186  
SW1/16  
S1

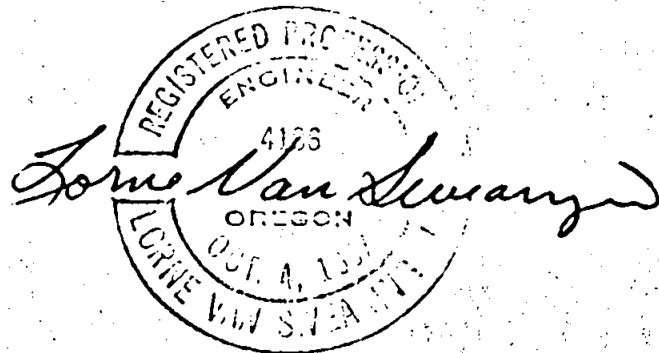
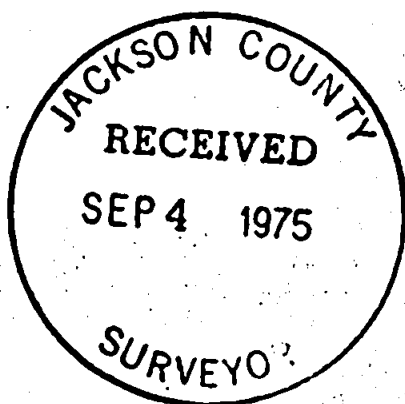
Scribed RE 4186 BT's  
15" Douglas Fir S  $6^{\circ}$  E 21.1'  
8" Douglas Fir N  $44\frac{1}{2}^{\circ}$  E 10.0'

From SW1/16 Corner Ran S  $0^{\circ}57'$  W 1304.5 feet to W1/16 Between  
Section 1 and Section 12

Began at S1/16 Corner Between Section 1, Township 35 South,  
Range 3 East, Willamette Meridian, and Section 6, Township  
35 South, Range 4 East, Willamette Meridian, Ran N  $89^{\circ}14'$  W  
1326.2 feet  
Set SE1/16 Corner 5/8"x30" Rebar with Alum. Cap Stamped: RE 4186  
SE 1/16  
S1

Scribed RE 4186 BT's  
7" Chinquapin N  $69^{\circ}$  E 41.3'  
14" White Fir S  $26^{\circ}$  E 40.4'

From SE1/16 Corner Ran S  $1^{\circ}45'30''$  W 1312.6 feet to E1/16  
Corner Between Section 1 and Section 12



6107