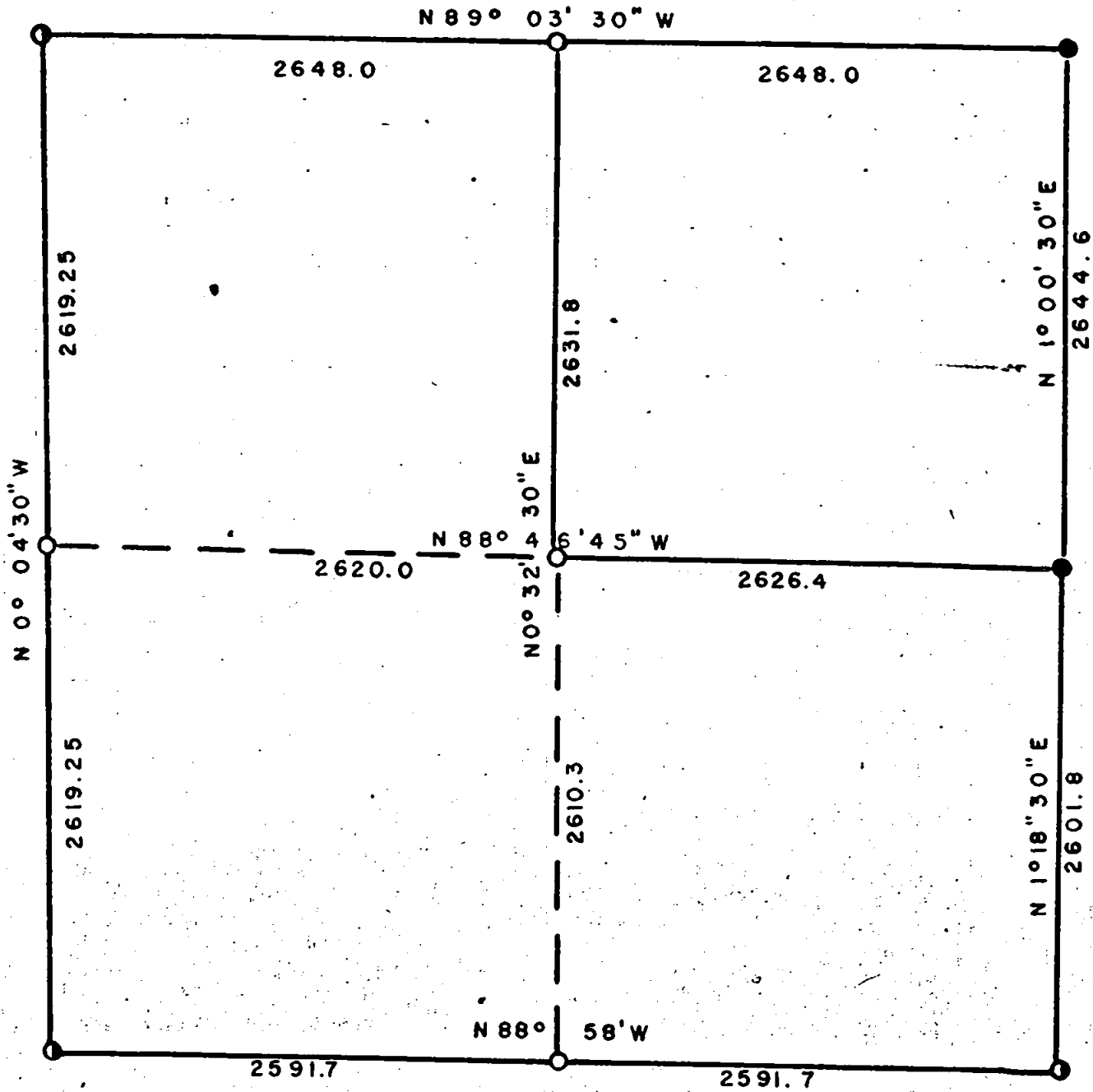


0100

SEC 12 T35S R3E W. M.

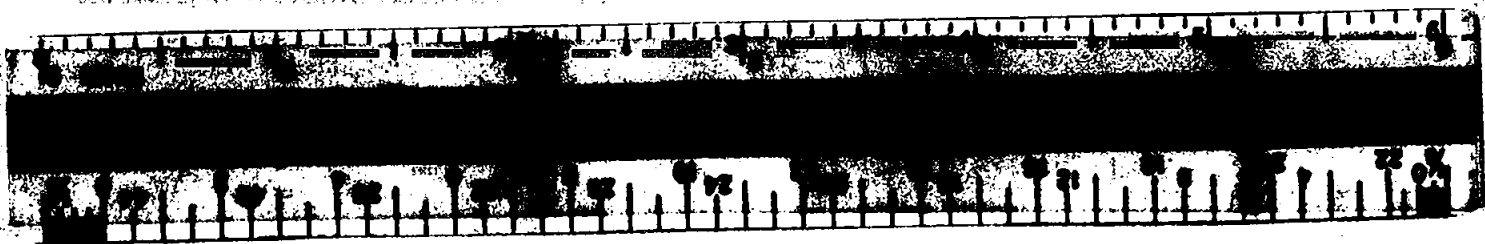


SCALE ----- 1"=1000'
 DATE ----- JULY 1975
 U. S. BRASS CAP ----- ●
 C. S. BRASS CAP ----- ●
 RE 4186 ALUM. CAP ----- ○

JACKSON COUNTY
 RECEIVED
 SEP 4 1975
 SURVEYOR



REGISTERED PROFESSIONAL
 ENGINEER
 4175
Lorne Van Swaney
 OREGON
 OCT 1 1975
 LORNE VAN SWANEY



0100

SECTION 12, TOWNSHIP 35 SOUTH, RANGE 3 EAST
WILLAMETTE MERIDIAN

July, 1975

NARRATIVE:

OBJECT: For Medford Resources Corporation. To subdivide out Medford Resources Corporation land and monument corners. Ran transit and chain survey tying to previous survey Section 11, Township 35 South, Range 3 East. Basis of bearings are from solar observation.

Found following evidence:

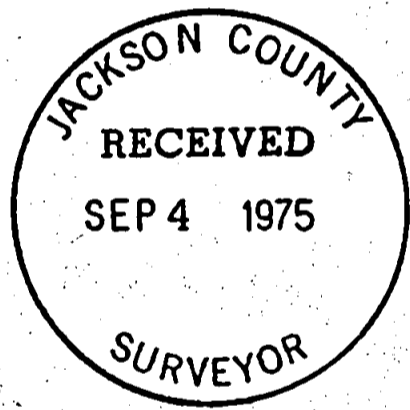
- N.W. Corner Cadastral Brass Cap and Bearing Trees.
- W $\frac{1}{4}$ Corner RE4186 Alum. Cap and Bearing Trees.
- S.W. Corner Cadastral Brass Cap and Bearing Trees.
- S $\frac{1}{4}$ Corner No evidence found.
- S.E. Corner Cadastral Brass Cap and Bearing Trees.
- E $\frac{1}{4}$ Corner County Surveyor Brass Cap and Bearing Trees.
- N.E. Corner " " " " " "
- N $\frac{1}{4}$ Corner No evidence found.

No evidence of N $\frac{1}{4}$ or S $\frac{1}{4}$ corner found. Spent approximately 3 man days searching for each corner.

WEST LINE: Bearing S 0⁰04'30" E
 0.0 feet NW Corner
 2619.25 feet W $\frac{1}{4}$ Corner
 5238.50 feet SW Corner

SOUTH LINE: Bearing S 88⁰58' E
 0.0 feet SW Corner
 2591.7 feet Set S $\frac{1}{4}$ Corner 5/8"x30" Rebar with Alum. Cap Stamped: RE 4186
S12
S13
 Scribed RE 4186 BT's
 20 $\frac{1}{2}$ " Douglas Fir S74 $\frac{1}{2}$ ⁰W 15.1'
 7" Douglas Fir due N 5.4'
 5183.4 feet SE Corner

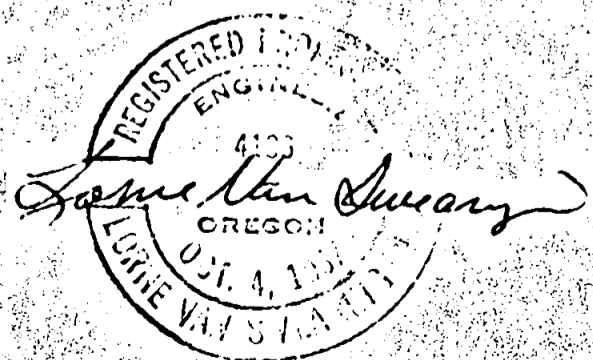
EAST LINE: Bearing South half N 1⁰18'30" E
 0.0 feet SE Corner
 2601.8 feet E $\frac{1}{4}$ Corner
 Bearing North half N 1⁰00'30" E
 0.0 feet E $\frac{1}{4}$ Corner
 2644.6 feet NE Corner



NORTH LINE: Bearing N 89⁰03'30" W
 0.0 feet NE Corner
 2648.0 feet N $\frac{1}{4}$ Corner Set 5/8"x30" Rebar with Alum. Cap Stamped: RE 4186
S1
S12
 Scribed RE 4186 BT's
 14" White Fir S25-3/4⁰E 17.3'
 16" White Fir N1⁰W 30.4'
 5296.0 feet NW Corner

NORTH-SOUTH CENTERLINE: Bearing S 0⁰32'30" W
 0.0 feet N $\frac{1}{4}$ Corner
 2631.8 feet C $\frac{1}{4}$ Corner Set 5/8"x30" Rebar with Alum. Cap Stamped: RE 4186
C $\frac{1}{4}$
S12
 Scribed RE 4186 BT's
 7" Douglas Fir S66⁰E 13.3'
 8 $\frac{1}{2}$ " Douglas Fir N45⁰E 21.1'
 5242.1 feet S $\frac{1}{4}$ Corner

EAST-WEST CENTERLINE: Bearing N 88⁰46'45" W
 0.0 feet E $\frac{1}{4}$ Corner
 2626.4 feet C $\frac{1}{4}$ Corner
 5246.4 feet W $\frac{1}{4}$ Corner



S12 35 3E