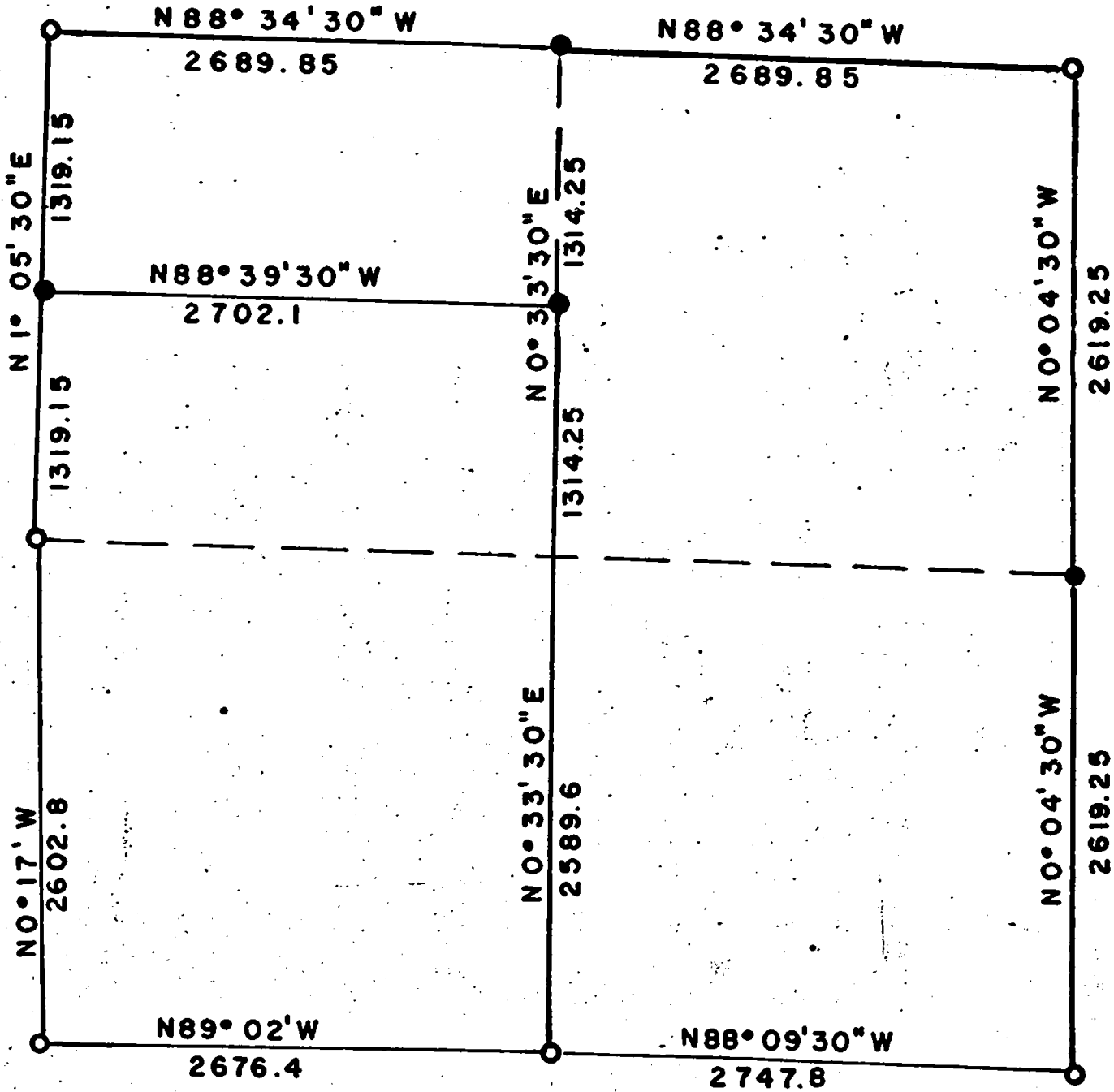


6077

Sec. II Twp. 35 S R3E W.M.



Brass Cap ○  
 RE 4186 Alum. Cap ●  
 Scale 1" = 1000'  
 Date 6 - 75

JACKSON COUNTY  
 RECEIVED  
 JUL 22 1975  
 SURVEYOR



REGISTERED PROFESSIONAL  
 ENGINEER  
 4186  
*Lorne Van Stuenkel*  
 OREGON  
 OCT. 4, 1971  
 LORNE VAN STUENKEL

6077

6077

SECTION 11, TOWNSHIP 35 SOUTH, RANGE 3 EAST  
WILLAMETTE MERIDIAN

June, 1975

NARRATIVE:

OBJECT: For Medford Resources Corporation. To subdivide out Medford Resources Corporation land and monument corners. Ran transit and chain closed traverse around section. Basis of bearings are from solar observation.

Found following evidence:

N.W. Corner	Cadastral Brass Cap and Bearing Trees.
W $\frac{1}{4}$ Corner	" " " " "
S.W. Corner	" " " " "
S $\frac{1}{4}$ Corner	" " " " "
S.E. Corner	" " " " "
N.E. Corner	" " " " "

No evidence of N $\frac{1}{4}$  corner or E $\frac{1}{4}$  corner found. Spent approximately 3 man days searching for each corner; no substantial evidence found.

WEST LINE: Bearing North half S 01<sup>0</sup>05'30" W  
0.0 feet NW Corner  
1319.15 feet N1/16 Corner between S10 and S11 Set 5/8"x30" Rebar & Alum.  
Cap Stamped: RE 4186  
S10/S11  
Scribed RE 4186 BT's  
12 $\frac{1}{2}$ " Sugar Pine S15<sup>0</sup>W 17.6'  
15" Doug Fir N88 $\frac{1}{2}$ E 24.45'  
2638.3 feet W $\frac{1}{4}$  Corner

Bearing South half S 0<sup>0</sup>17' E  
0.0 feet W $\frac{1}{4}$  Corner  
2602.8 feet SW Corner

SOUTH LINE: Bearing West half S 89<sup>0</sup>02' E  
0.0 feet SW Corner  
2676.4 feet S $\frac{1}{4}$  Corner

Bearing East half S 88<sup>0</sup>09'30" E  
0.0 feet S $\frac{1}{4}$  Corner  
2747.8 feet SE Corner

EAST LINE: Bearing N 0<sup>0</sup>04'30" W  
0.0 feet SE Corner  
2619.25 feet E $\frac{1}{4}$  Corner Set 5/8"x30" Rebar Alum. Cap Stamped: RE 4186  
S11/S12

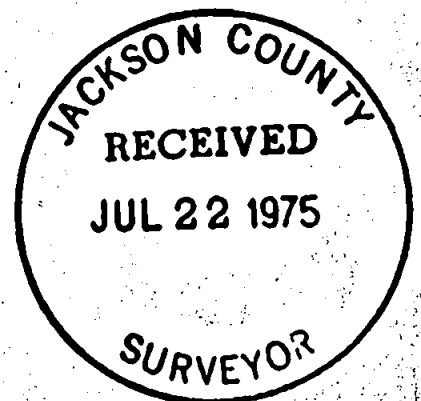
Scribed RE 4186 BT's  
20" Cedar N12<sup>0</sup>W 23.0'  
15" Cedar N32 $\frac{1}{4}$ E 42.4'  
5238.5 feet NE Corner

NORTH LINE: Bearing N 88<sup>0</sup>34'30" W  
0.0 feet NE Corner  
2689.85 feet N $\frac{1}{4}$  Corner Set 5/8"x30" Rebar Alum. Cap Stamped: RE 4186  
S2  
S11

Scribed RE 4186 BT's  
9" Yellow Pine S45<sup>0</sup>E 20.8'  
16" Cedar N54 $\frac{1}{2}$ W 63.9'  
5379.7 feet NE Corner

Ran from N1/16 between S10 and S11  
S88<sup>0</sup>39'30"E 2702.1 feet to CN1/16 S11  
Set 5/8"x30" Rebar Alum. Cap Stamped: RE 4186  
CN

Scribed RE 4186 BT's  
12" White Fir N42<sup>0</sup>W 41.4'  
15 $\frac{1}{2}$ " Doug. Fir N89 $\frac{1}{2}$ E 30.7'  
Thence S 0<sup>0</sup>33'30" W 3903.8 feet to S $\frac{1}{4}$  Corner



S11 T35 R3E