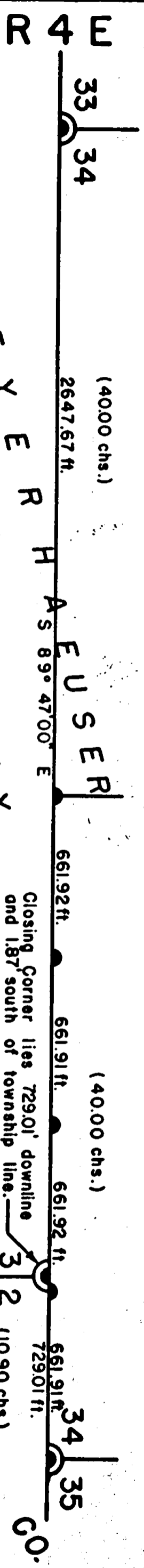


6063 T 39 S

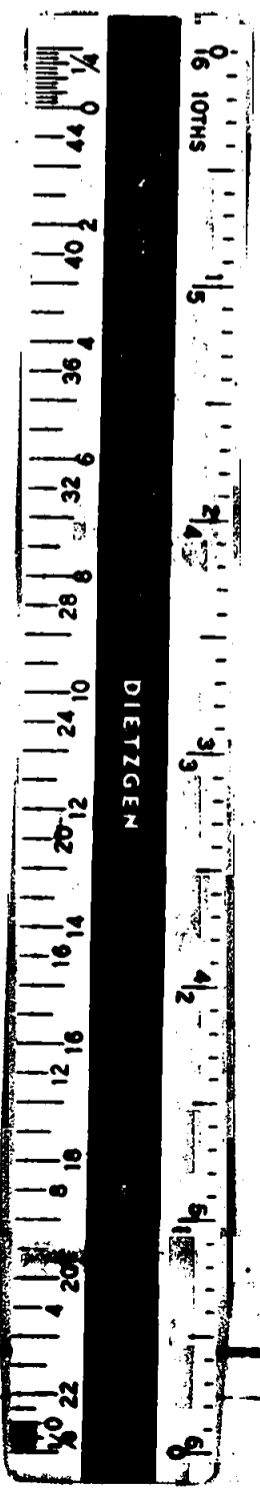
(E.T. FISHER CONTRACT NO. 77 1 FEB. 1858.)



W E Y E R H A S E U S E R
T 40 S
C O M P A N Y

(TURNER & HOWARD CONTRACT NO. 180 27 JULY 1872)

BEARINGS BASED ON SOLAR OBSERVATION.



I, Everett J. Scott, do swear and affirm that I have surveyed the land delineated on this survey and that this plot is a true representation of that survey.

REGISTERED PROFESSIONAL LAND SURVEYOR


Everett J. Scott
 OREGON
 JULY 10, 1964
 EVERETT J. SCOTT
 661

JACKSON COUNTY
 RECEIVED
 JUL 8 1975
 SURVEYOR

● Corners found, reset.

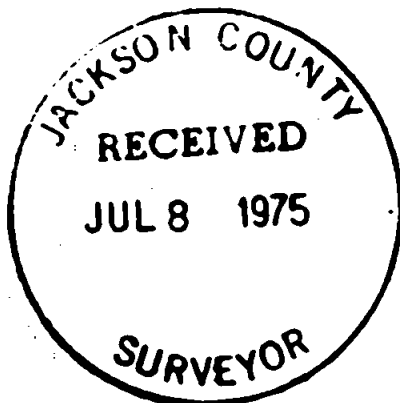
● Corners set.

RETRACE & SUBDIVISION
 SOUTH LINE SEC. 34, T39S, R4E, W.M.
 JACKSON COUNTY, OREGON


 Weyerhaeuser Company
 Klamath Falls Branch

SCALE — 1" = 500'
 DEL. — *YKZ*
 TRACED — *YKZ*
 DATE — 25 JUNE 1974
 CHECKED BY —
 DRAWING NO. — L574-10

6063



WEYERHAEUSER COMPANY
KLAMATH FALLS BRANCH

Retrace & Subdivision
South Line Section 34, T39S, R04E, W.M.
Jackson County, Oregon

34 | 35

Set a SurvKAP on a 5/8" x 30" iron rod from found B.T.'s set by distances.
Bearings are as noted:

- A Pine 40" in diameter, N75°E (N81°E), 47.0 Lks., (stub, notched)
- A Fir 48" in diameter, S70°E (S71½°E), 35.0 Lks., (stub)
- A Red Cedar 6" in diameter, S40°W, 60.0 Lks. (12" dead)
- A Pine 4" in diameter, N36°W, 38.0 Lks. (gone)

Set additional references:

- A Sugar Pine 6" in diameter, N62½°E, 56.3 Lks.
- A White Fir 9" in diameter, S69½°E, 20.1 Lks.
- A Ponderosa Pine 6" in diameter, S82½°W, 47.8 Lks.
- A White Fir 6" in diameter, N43½°W, 18.6 Lks.

EE 1/64

Set a SurvKAP on a 5/8"x 30" iron rod from which bears:

34

- A Ponderosa Pine 26" in diameter, N44°E, 21.0 Lks.
- A Ponderosa Pine 7" in diameter, N33°W, 25.3 Lks.

CC
3 | 2

Set a SurvKAP on a 5/8" x 30" iron rod from found B.T.'s:

- A Yellow Pine 12" in diameter, S42°E, 17.0 Lks. (gone)
- A Yellow Pine 36" in diameter, S67°W, 26.0 Lks. (stub)

Set additional references:

- A Douglas Fir 18" in diameter, N75½°E, 17.9 Lks.
- A Douglas Fir 12" in diameter, S36°W, 54.2 Lks.
- Closing corner lies 729.01' downline and 1.87' South of Township line.

E 1/16
34

Set a SurvKAP on a 5/8" x 30" iron rod from which bears:
A Ponderosa Pine 8" in diameter, S19°W, 23.7 Lks.

WE 1/64
34

Set a SurvKAP on a 5/8" x 30" iron rod from which bears:
A Ponderosa Pine 10" in diameter, S67°E, 30.8 Lks.

S 1/4
34

Set a SurvKAP on a 5/8" x 30" iron rod by proportion, unable to locate original corner. From which bears:
A White Fir 14" in diameter, N72½°E, 32.5 Lks.
A Ponderosa Pine 11" in diameter, N42½°W, 52.0 Lks.

33 | 34

Set a SurvKAP on a 5/8" x 30" iron rod replacing found stone 18 x 18 x 24 with "X" scribed on top which fit calls from B.T.'s.
Set stone on West side of iron rod which bears:

- A Pine 8" in diameter, N40°E, 14.0 Lks. (18" in diameter)
- A Pine 6" in diameter, S40°E, 25.0 Lks. (found scribed remains)
- A Fir 18" in diameter, S05°W, 18.0 Lks. (26" in diameter)
- A Fir 14" in diameter, N20°W, 41.0 Lks. (24" in diameter)

All SurvKAPS are set in a stone mound and are stamped:

WEYERHAEUSER

1973
ORLS 661

All bearings and distances are to 'W' nails set in the base of the described tree.

Everett J. Scott
Everett J. Scott
Woods Engineer

S34 T39 R4E