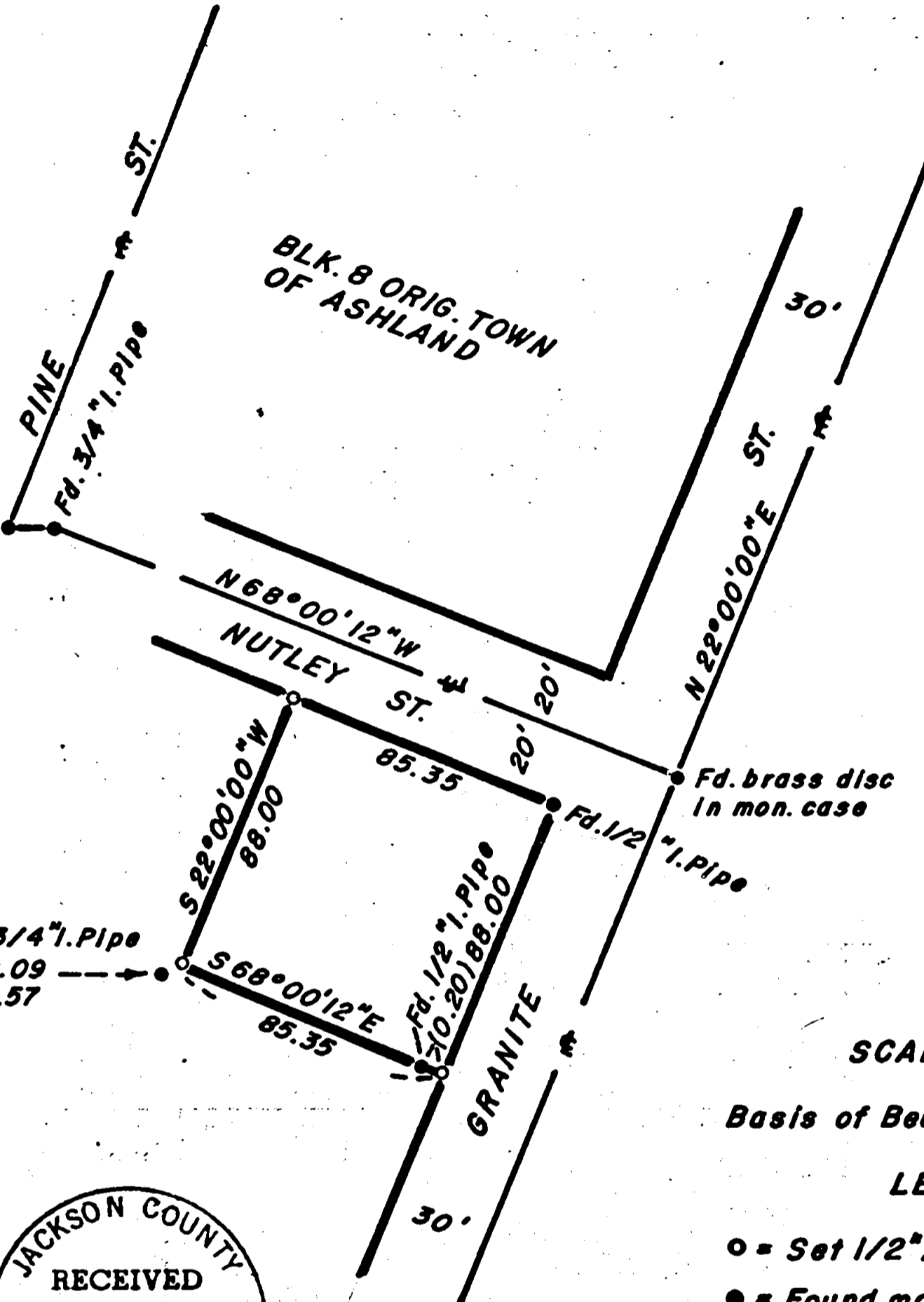


6040

BAUM ST.

Fd. 3/4" Pipe
In mon. case



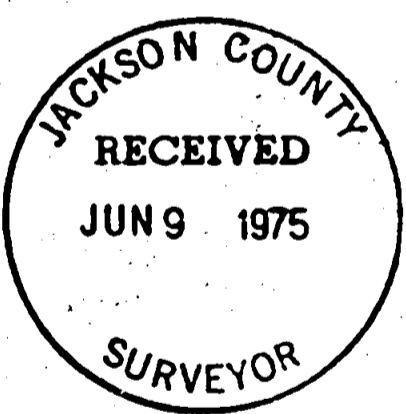
SCALE 1"=50'

Basis of Bearings R.S. 4660

LEGEND

- = Set 1/2" x 24" I. Pipe
- = Found mon. as shown

Fd. 3/4" Pipe
S 0.09
W 0.57



REGISTERED
PROFESSIONAL
LAND SURVEYOR

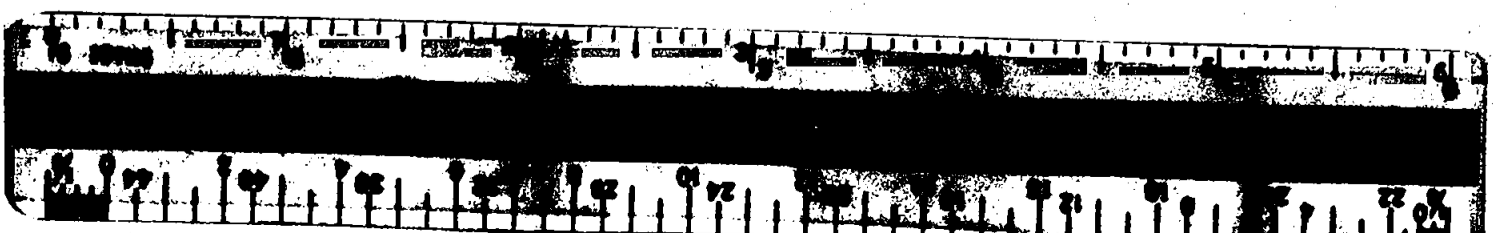
George Burrell

OREGON
JULY 10, 1964
GEORGE R. BURRELL
638

MAP OF SURVEY

Located in S.E. 1/4 N.E. 1/4 Sec. 8
T39S, R1E in the City of Ashland
For: BILL HAMPTON
By: George Burrell, Surveyor
May 1975

6040



SURVEY NARRATIVE TO COMPLY WITH O.R.S. 209.250

FOR: Bill Hampton
135 Oak St.
Ashland, Oregon

PURPOSE: To monument the corners of the tract described in doc.
No. 71-01043 of the Official Records

PROCEDURE: The controlling street monuments were recovered and used
in establishing said corners according to record distance
along Granite and Nutley Streets.

REGISTERED
PROFESSIONAL
LAND SURVEYOR

George Burrell

OREGON
JULY 10, 1964
GEORGE R. BURRELL
638

