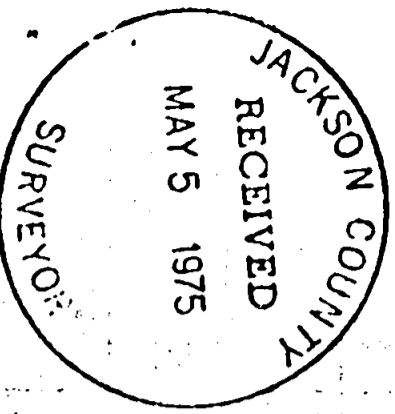


6010



- Found 5/8" Pin (tagged R.L.S. 638)
- Set monument as shown

LEGEND

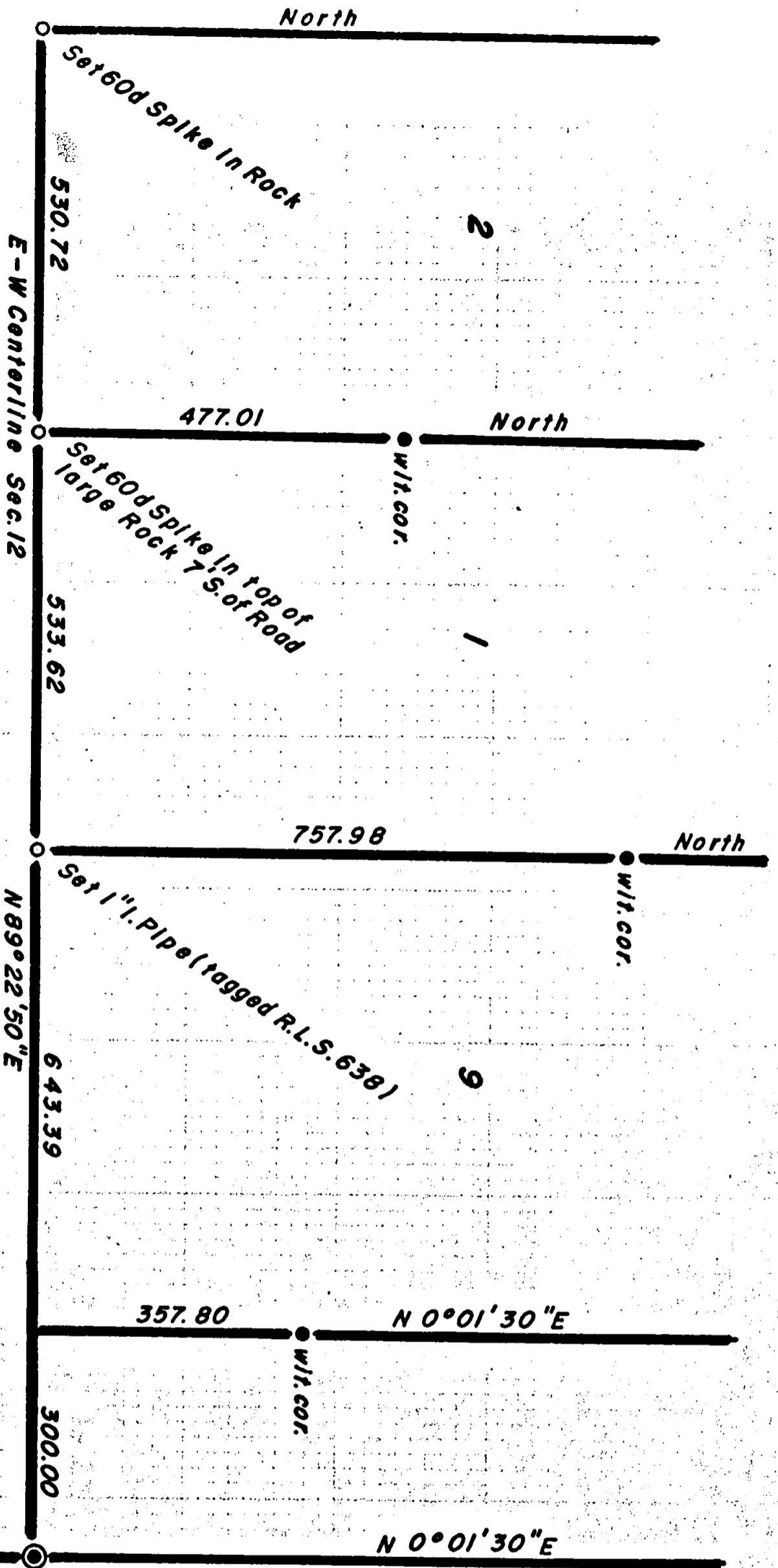
REGISTERED
PROFESSIONAL
LAND SURVEYOR

George Burrell

OREGON
JULY 10, 1964
GEORGE R. BURRELL
638

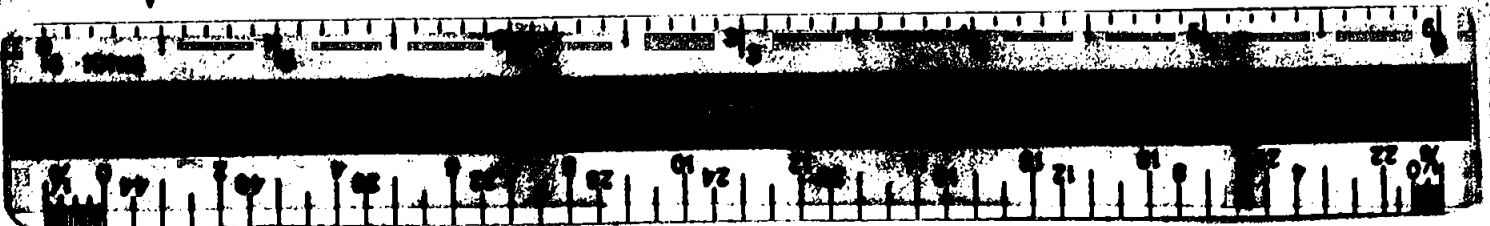
MAP OF SURVEY

Located in N.E. 1/4 of Section
12, Twp. 40S, R3E, W. Meridian
For: GEORGE WETZEL 6010
By: G. Burrell, Surveyor, May 1975



SCALE 1"=200'

Basis of Bearings:
R.S. No. 5117



SURVEY NARRATIVE TO COMPLY WITH O.R.S. 209.250

FOR: George Wetzel
1389 Cheswick Pl.
Westlake Village, Calif. 91361

PURPOSE: To monument and establish the South boundary line to
lots 1, 2 and 9 as shown on Recorded Survey No. 5117.

PROCEDURE: Previous survey control of recorded survey no. 5117
was recovered and utilized in establishing said line.

REGISTERED
PROFESSIONAL
LAND SURVEYOR

George R. Burrell

OREGON
JULY 10, 1964
GEORGE R. BURRELL
638

