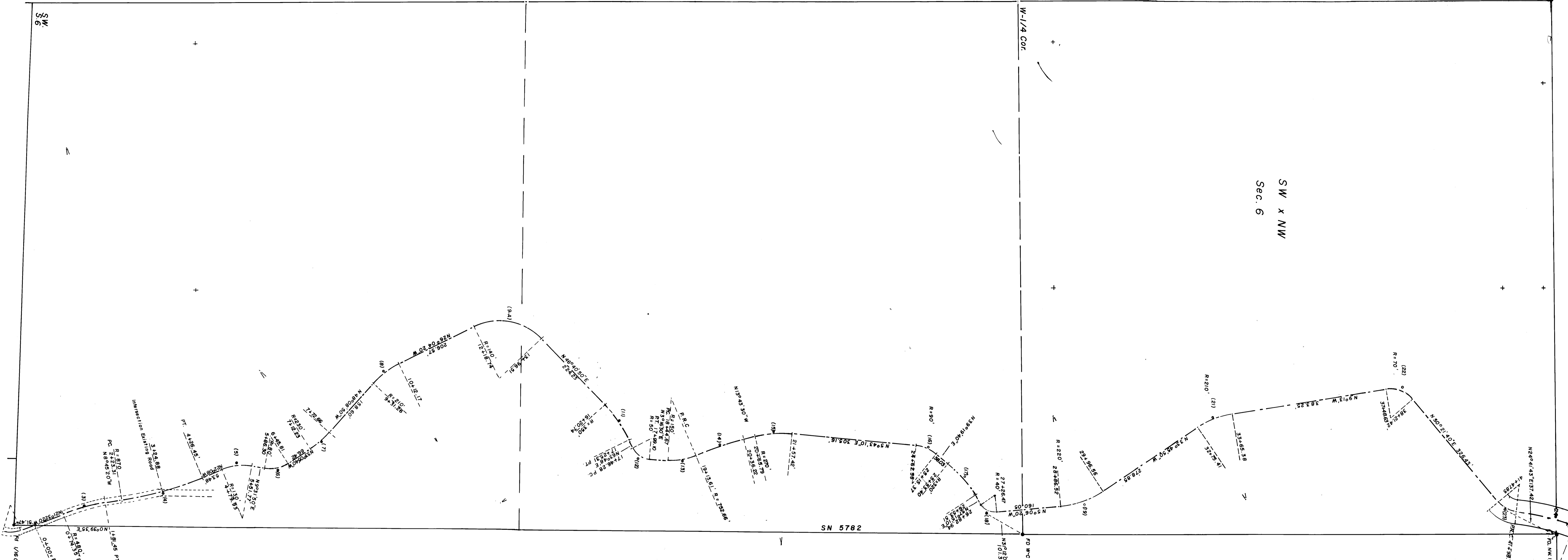


SW
36

SW x NW
Sec. 6



SURVEY IN W-1/2 SEC. 6, T. 40S., R. 2E. WM
FOR HILLCREST CORP.

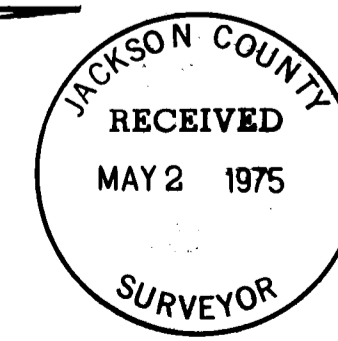
74-13
MAP 1 of 2

BY EDWARD A. MC GINTY
MEDFORD OREGON
MARCH 1975

SCALE 1" = 100'
• = FD MON. 5/8" LPIN
OTHER MON. SEE NAR

REGISTERED
PROFESSIONAL
LAND SURVEYOR

Edward A. McGinty
EDWARD A. MCGINTY
JULY 10 1953
301



Hillcrest Corporation
Page 2 - Narrative

#31	39° 49' 30.0"	100.000	69.508	68.117	36.224
#32	46° 53' 40.0"	70.000	57.394	55.800	30.421
#33	17° 39' 40.0"	200.000	61.649	61.405	31.071
#34-A	180° 00' 00.0"	39.733	124.826	79.466	
#36	38° 14' 20.0"	100.000	66.739	65.508	34.666
#37	43° 24' 00.0"	70.000	53.023	51.765	27.856
#38	50° 10' 20.0"	70.000	61.297	59.357	32.770
#39	14° 16' 30.0"	472.630	117.754	117.449	59.183
#40	32° 35' 10.0"	170.000	96.585	95.387	49.689
#41	28° 34' 30.0"	220.000	109.720	108.587	56.026
#42	19° 38' 00.0"	200.000	68.533	68.198	34.806
#42-A	31° 53' 47.0"	50.000	27.835	27.477	14.288
#43-A	134° 43' 27.0"	40.000	135.942	79.340	
#45-A	32° 22' 9.0"	50.000	28.247	27.873	14.512
#46-A	187° 10' 49.0"	40.000	130.676	79.843	
#47	29° 58' 00.0"	260.000	135.984	134.440	69.586
#48	22° 17' 10.0"	200.000	77.793	77.304	39.395
#49	57° 25' 30.0"	70.000	70.158	67.258	38.344
#50	34° 29' 50.0"	100.000	60.209	59.304	31.048
#51	33° 3' 50.0"	120.000	69.249	68.292	35.618
#52	24° 34' 30.0"	340.000	145.831	144.716	74.054
#53	22° 2' 30.0"	210.000	80.787	80.290	40.899
#54-A	79° 37' 34.0"	130.000	180.666	166.474	108.362
#57-A	157° 31' 59.0"	40.000	109.979	78.467	201.397
#58-A	46° 46' 18.0"	90.000	73.469	71.446	38.920
#58-B	23° 42' 41.0"	200.000	82.768	82.179	41.985

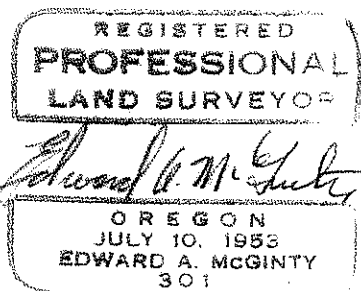
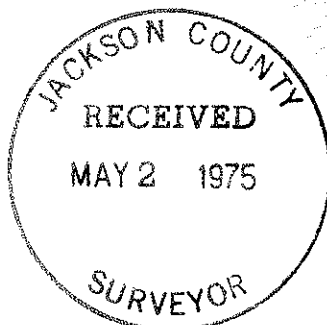
The following curve point numbers also represent the P.I. of the curve and the following monuments where set;

1/2" x 12" iron pin approx. 6" deep; 3, 4, 5, 6, 7, 8, 11, 12, 13, 14, 15, 16, 17, 18, 19, 21, 22, 23, 24, 25, 27, 28, 30, 31, 32, 33, 36, 37, 48, 50, 51, 53.

1/2" x 24" iron pin approx. 6" deep; 29, 38, 41, 42, 47, 49, 52.

5/8" x 10" iron pin 39, 40 and station 101 + 30.97 a 5/8" x 18" iron pin, 3" deep.

The road's general purpose and use being timber harvest and management.



SURVEY NARRATIVE TO COMPLY WITH O.R.S. 209-250

SURVEY FOR: Hillcrest Corporation 74-13
 c/o Judson Parsons
 3285 Hillcrest
 Medford, Oregon

SURVEY BY: Edward A. McGinty, R.S.
 Medford, Ore. March 1975

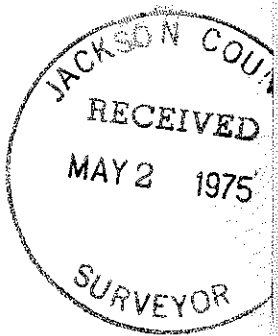
LOCATION: W1/2 Sec. 6, T40S, R2E; W1/2 Sec. 31, T39S, R2E, W.M.

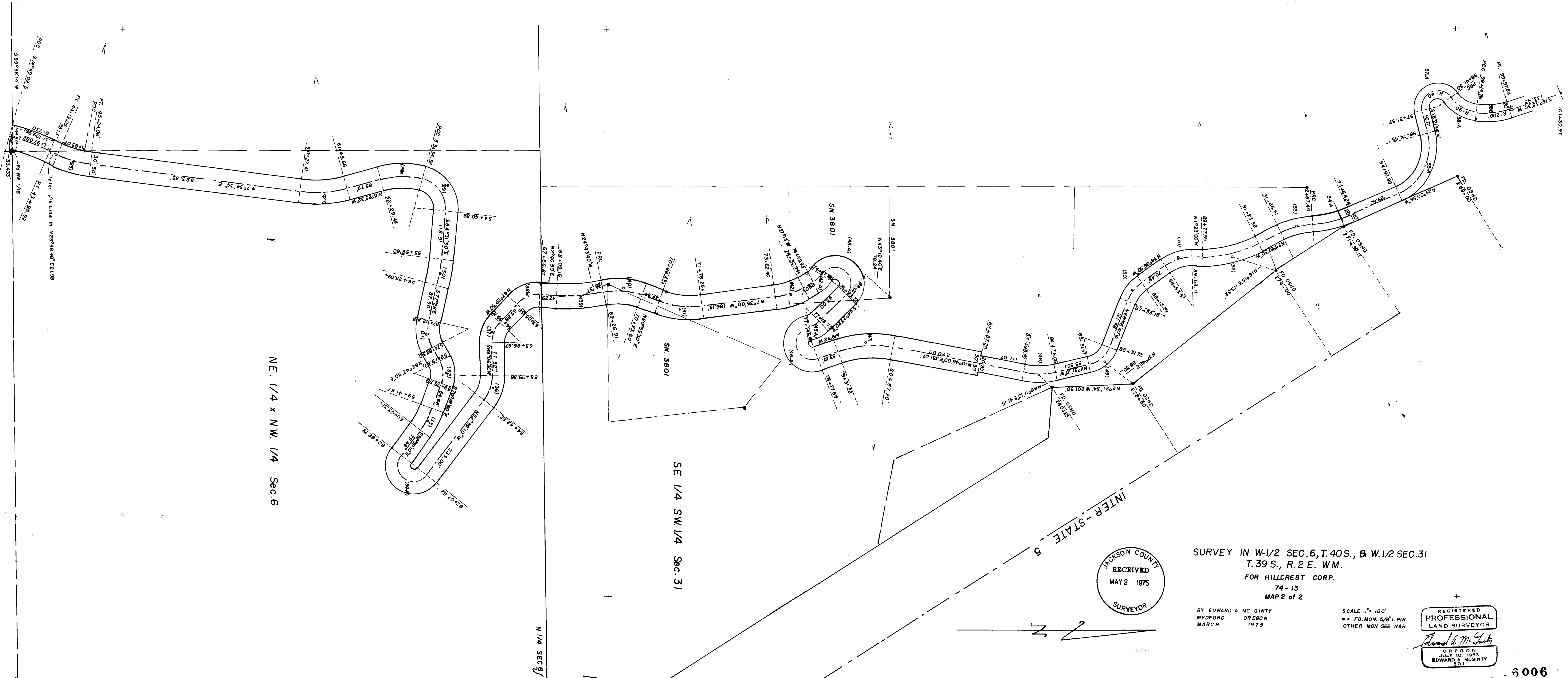
BASIS OF BEARING: Survey No. 5782

PRECEDENCE OF SURVEY:

Location of existing road for timber access, a portion of which has been recently constructed, following center-line curve data;

PI.#	DELTA	RADIUS	ARC LEN.	CHORD	SEMI. TAN.	
#3	12° 47' 00.0"	480.000	107.093	106.871	53.770	2
#4	13° 22' 40.0"	870.000	203.133	202.672	102.030	
#5	31° 39' 50.0"	130.000	71.843	70.932	36.865	
#6	42° 37' 30.0"	80.000	58.516	58.153	31.211	
#7	15° 3' 10.0"	230.000	60.426	60.252	30.388	
#8	22° 4' 30.0"	210.000	80.909	80.410	40.963	
#9-A	72° 45' 10.0"	140.000	177.769	166.064	103.128	
#11	17° 7' 10.0"	350.000	104.577	104.188	52.681	
#12	60° 31' 30.0"	50.000	52.818	50.396	29.174	
#13	26° 20' 00.0"	150.000	68.941	68.335	35.090	
#14	9° 20' 00.0"	752.662	122.607	122.471	61.439	
#15	19° 26' 40.0"	270.000	91.630	91.191	46.260	
#16	33° 36' 30.0"	90.000	52.792	52.038	27.180	
#17	17° 55' 30.0"	320.000	100.112	99.704	50.468	
#18	62° 21' 30.0"	40.000	43.534	41.417	24.205	
#19	28° 39' 30.0"	220.000	110.040	108.896	56.196	
#21	24° 32' 50.0"	210.000	89.970	89.284	45.686	
#22	59° 34' 40.0"	70.000	72.788	69.553	40.071	
#23	42° 44' 6.0"	67.444	50.304	49.146	26.387	
#24	16° 11' 14.0"	700.000	197.764	197.107	99.545	
#25	16° 14' 14.0"	300.000	85.018	84.734	42.796	
#27	22° 58' 6.0"	290.000	116.253	115.476	58.918	
#28	30° 2' 32.0"	200.000	104.867	103.670	53.669	
#29	80° 49' 30.0"	75.548	106.573	97.953	64.325	
#30	7° 3' 30.0"	530.000	65.291	65.250	32.687	





NE 1/4 x NW 1/4 Sec. 6

SE 1/4 SW 1/4 Sec. 31

N 1/4 SEC 6

INTER-STATE 5

JACKSON COUNTY
 RECEIVED
 MAY 2 1975
 SURVEYOR

SURVEY IN W-1/2 SEC. 6, T. 40 S., & W-1/2 SEC. 31
 T. 39 S., R. 2 E. WM.
 FOR HILLCREST CORP.
 74-13
 MAP 2 of 2

BY EDWARD A. MC GINTY
 MEDFORD OREGON
 MARCH 1975

SCALE 1" = 100'
 • = FD. MON. 5/8" I. PIN
 OTHER MON. SEE NAR.

REGISTERED
 PROFESSIONAL
 LAND SURVEYOR

Edward A. McGinty
 OREGON
 JULY 10, 1953
 EDWARD A. MCGINTY
 301