

Co. Sta. 47+14.5 Pl.
Fd. Spike

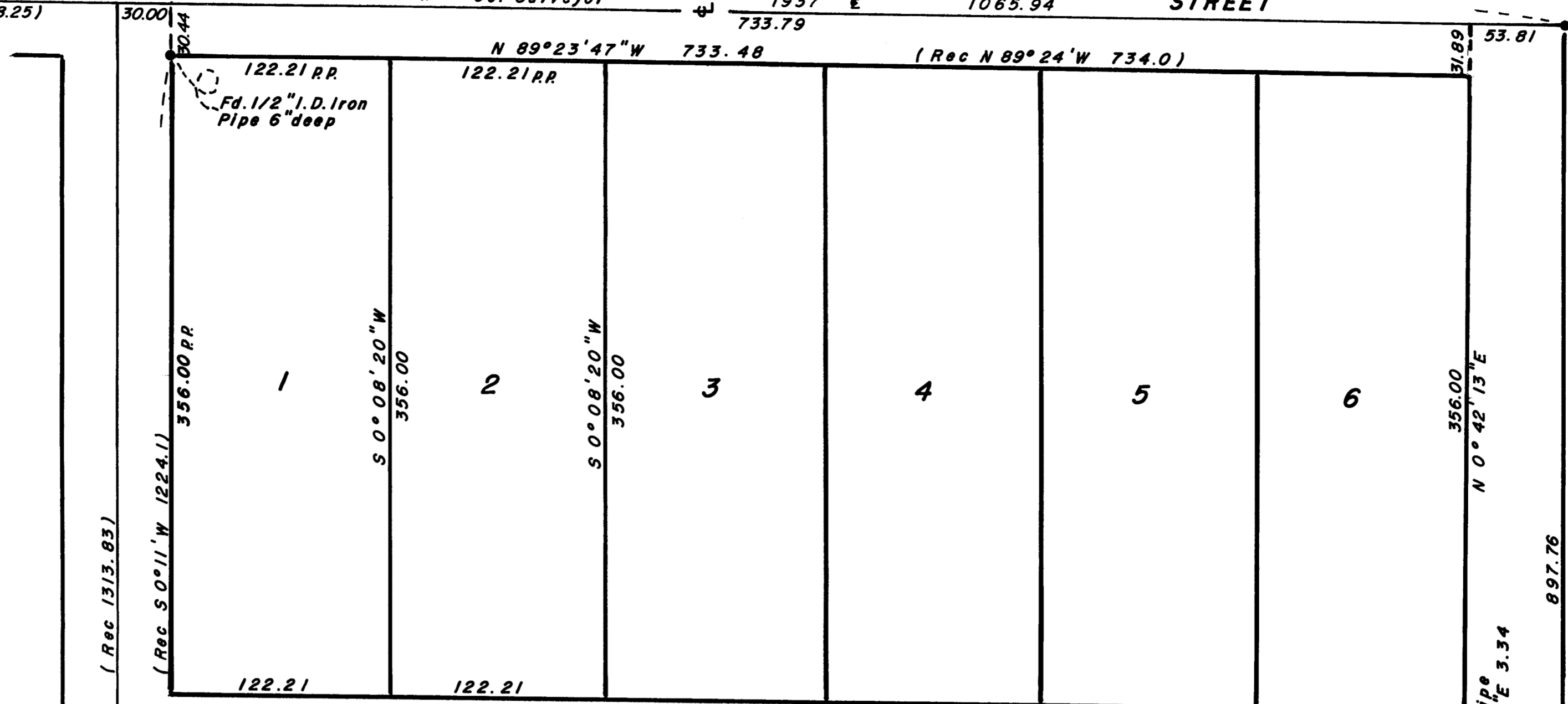
SPRING

N 89°30'35"W Co. Surveyor

1937 1065.94
733.79

STREET

Fd. 5/8" I. Pin Re: R.S. 5861



(Rec 1313.83)

1313.48

VALLEY VIEW DRIVE

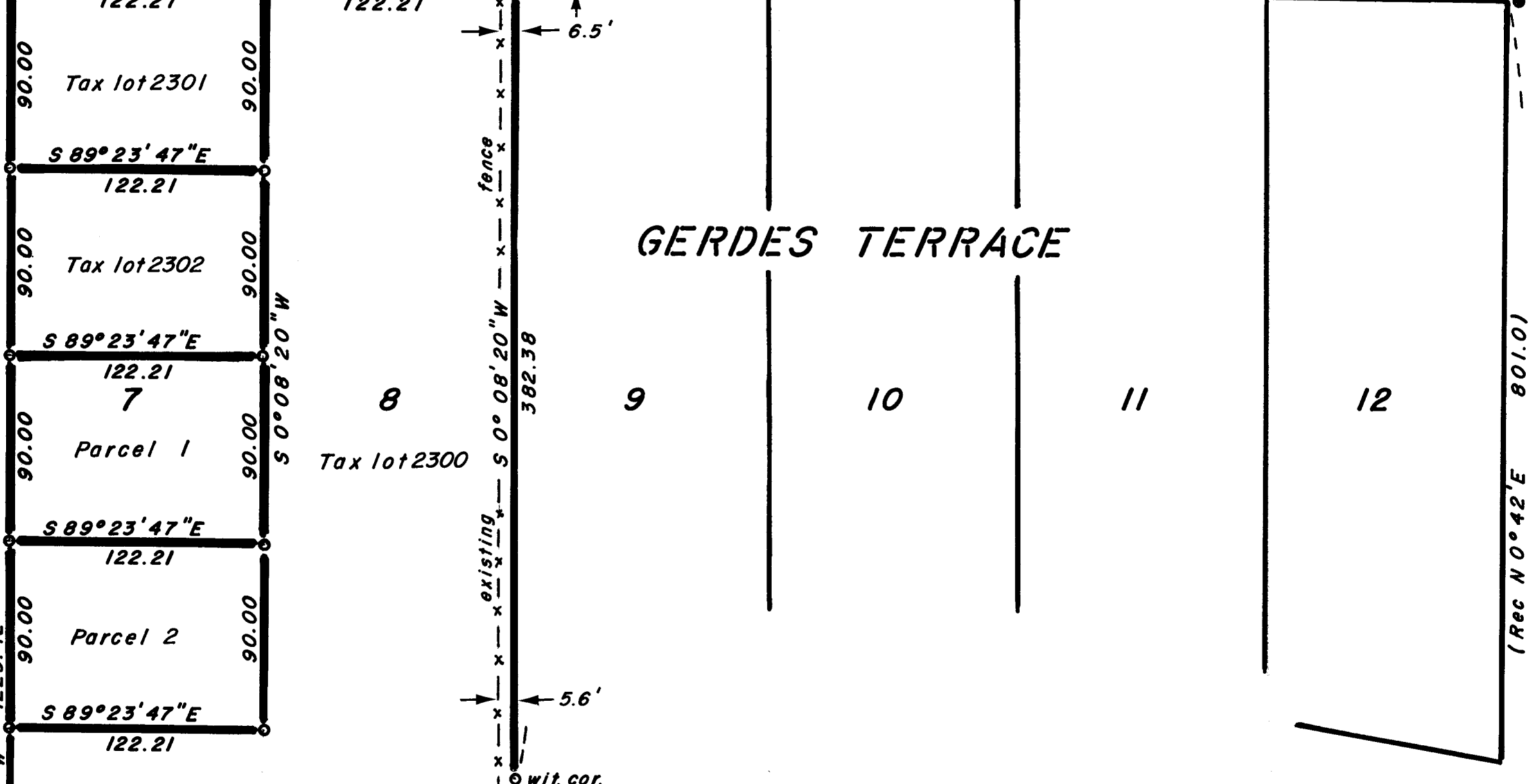
S 0°08'20"W

Per 1950 Co. Rd. Survey

S 89°55'55"E 29.36
Fd. 3/4" I. Pin

LAWN RIDGE STREET

N 89°23'47"W 729.38 (Rec N 89°24'W 730.4)



S 0°08'20"W 382.38

S 89°23'47"E 90.00

S 89°23'47"E 90.00

S 89°23'47"E 90.00

S 89°23'47"E 90.00

S 89°23'47"E 90.00

S 89°23'47"E 90.00

S 89°23'47"E 90.00

S 89°23'47"E 90.00

S 89°23'47"E 90.00

S 89°23'47"E 90.00

S 89°23'47"E 90.00

S 89°23'47"E 90.00

S 89°23'47"E 90.00

S 89°23'47"E 90.00

S 89°23'47"E 90.00

S 89°23'47"E 90.00

S 89°23'47"E 90.00

S 89°23'47"E 90.00

S 89°23'47"E 90.00

S 89°23'47"E 90.00

S 89°23'47"E 90.00

S 89°23'47"E 90.00

S 89°23'47"E 90.00

S 89°23'47"E 90.00

S 89°23'47"E 90.00

S 89°23'47"E 90.00

S 89°23'47"E 90.00

S 89°23'47"E 90.00

S 89°23'47"E 90.00

S 89°23'47"E 90.00

S 89°23'47"E 90.00

S 89°23'47"E 90.00

S 89°23'47"E 90.00

S 89°23'47"E 90.00

S 89°23'47"E 90.00

S 89°23'47"E 90.00

S 89°23'47"E 90.00

N 0°42'13"E 53.81

Fd. 3/4" I. Pipe
N 69°05'25"E 3.34

60.00

(Rec N 0°42'E 801.0)

MODOC AVE

N 0°18'30"E 897.76

West line D.L.C. No. 63 Per R.S. 5861

60.00

N 0°42'13"E 800.87

60'

Fd. 5/8" I. Pin
6" deep



SCALE 1"=60'

Basis of Bearings R.S. 5861

LEGEND

- = Set 5/8"x24" I. Pin tagged R.L.S.638
- = Found monument as shown



RIDGE

w/t. cor.

S 0°08'20"W 1223.42

S 89°51'40"E 30.00

S 89°51'40"E 30.00

S 89°51'40"E 30.00

S 89°51'40"E 30.00

S 89°51'40"E 30.00

S 89°51'40"E 30.00

S 89°51'40"E 30.00

S 89°51'40"E 30.00

S 89°51'40"E 30.00

S 89°51'40"E 30.00

S 89°51'40"E 30.00

S 89°51'40"E 30.00

S 89°51'40"E 30.00

S.W. Cor. GERDES TERRACE
Per 1950 Co. Rd. Survey

N 89°54'50"W 721.46 (Rec N 89°55'W 722.7)

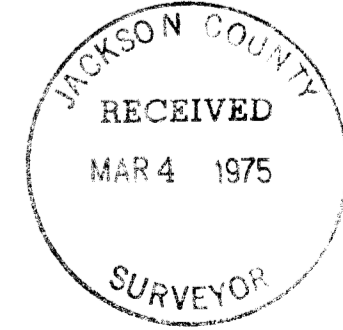
S.E. Cor. GERDES TERRACE
Re: R.S. 153

S.W. Cor. D.L.C. 63
Fd. 1 1/2" I. Pin 28" deep

REGISTERED
PROFESSIONAL
LAND SURVEYOR

George Burrell

OREGON
JULY 10, 1954
GEORGE R. BURRELL
638



MAP OF SURVEY

Located in Lots 7 & 8 GERDES TERRACE SUB.
in Section 20, Twp. 37 South, Range 1 West W.M.
For: LOUIS MAHAR, MEDFORD, OREGON
By: George Burrell, Surveyor, Jan. 1975

SURVEY NO. 5946

SURVEY NARRATIVE TO COMPLY WITH O.R.S. 209.250

FOR: Louis Mahar
314 Bessie St. "B"
Medford, Oregon

PURPOSE: To monument tax lots 2301 and 2302 and to partition tax lot 2300 as shown on the accompanying map.

PROCEDURE: The monument locating the S.E. corner of GERDES TERRACE was recovered according to recorded survey no. 153. The Westerly line of Modoc Street was established by projecting the line Northerly and 60.00 feet from and right angles to the S.W. corner of D.L.C. No. 63. The S.W. corner of GERDES TERRACE was established from County Road survey data (1950) which tied to a 3/4" iron pipe now destroyed. The N.W. corner of lot 7 was established on a proportional distance between said S.W. corner position and a 1/2" iron pipe found at the N.W. corner of GERDES TERRACE. The Southerly boundary of Lawn Ridge Street was established by holding plat record angle at Modoc Street. From data thus obtained lot 7 and 8 was monumented and partitioned according to record descriptions (tax lots 2301 and 2302).

