

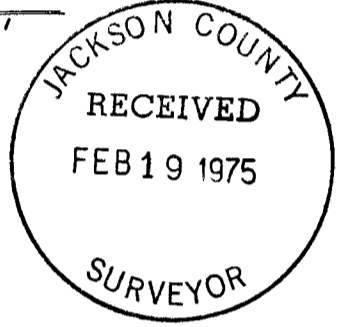
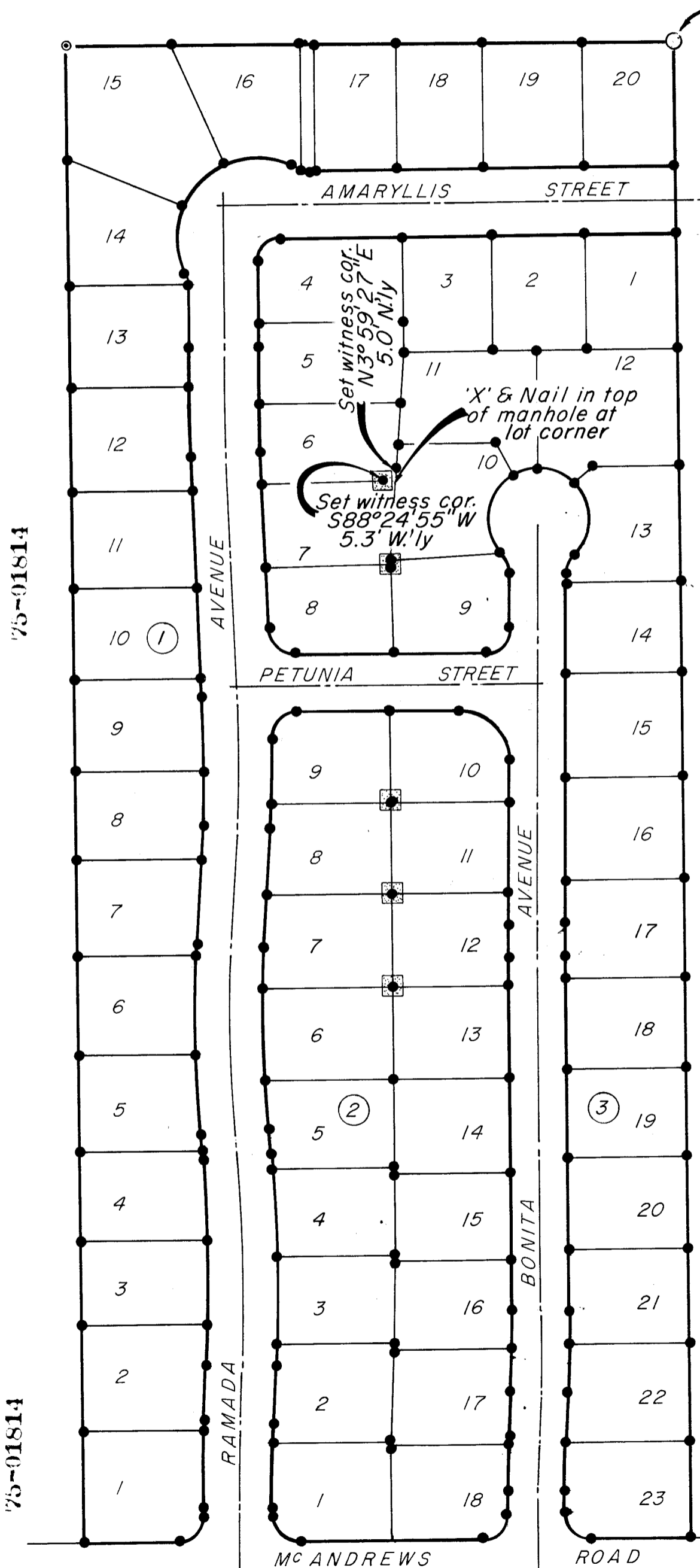
75-01814

5938

MAP OF POST MONUMENTATION FOR RAMADA HILLS SUBDIVISION

SEC. 20, T.37S., R.1W., W.M.

Initial point



- Set brass cap
- Set 5/8" iron pin
- ⊙ Fd. 2" pipe
- ⊠ 5/8" Iron pin set in concrete

I hereby certify that this map represents a survey made under my direction & that the monuments shown hereon are at their correct location & conform to ORS 92.060.



Examined and approved

2/18/75 Date John E. Jensen City Engineer

State of Oregon, County of Jackson--SS.
 The within instrument received and filed at 2:59 o'clock
 P. m. the 18 day of Feb 1975
 Recorded in Official Records for Jackson County
 Oregon. Harry Chapman County Clerk.
 By Betty Thompson Deputy

JANUARY 17, 1975

MARQUSS & MARQUSS
 CONSULTING ENGINEERS
 12 GOLDY BUILDING
 MEDFORD, OR. 772-7115

75-01814

75-01814

5938

FOR: Douglas Pickell

LOCATION: Ramada Hills Subdivision
Sec. 20, T 37S, R 1W, WM
Medford, Oregon

PURPOSE: To show interior monuments placed within the
subdivision and as required by the post-
monumentation provision of the revised version
of ORS 92.060.

