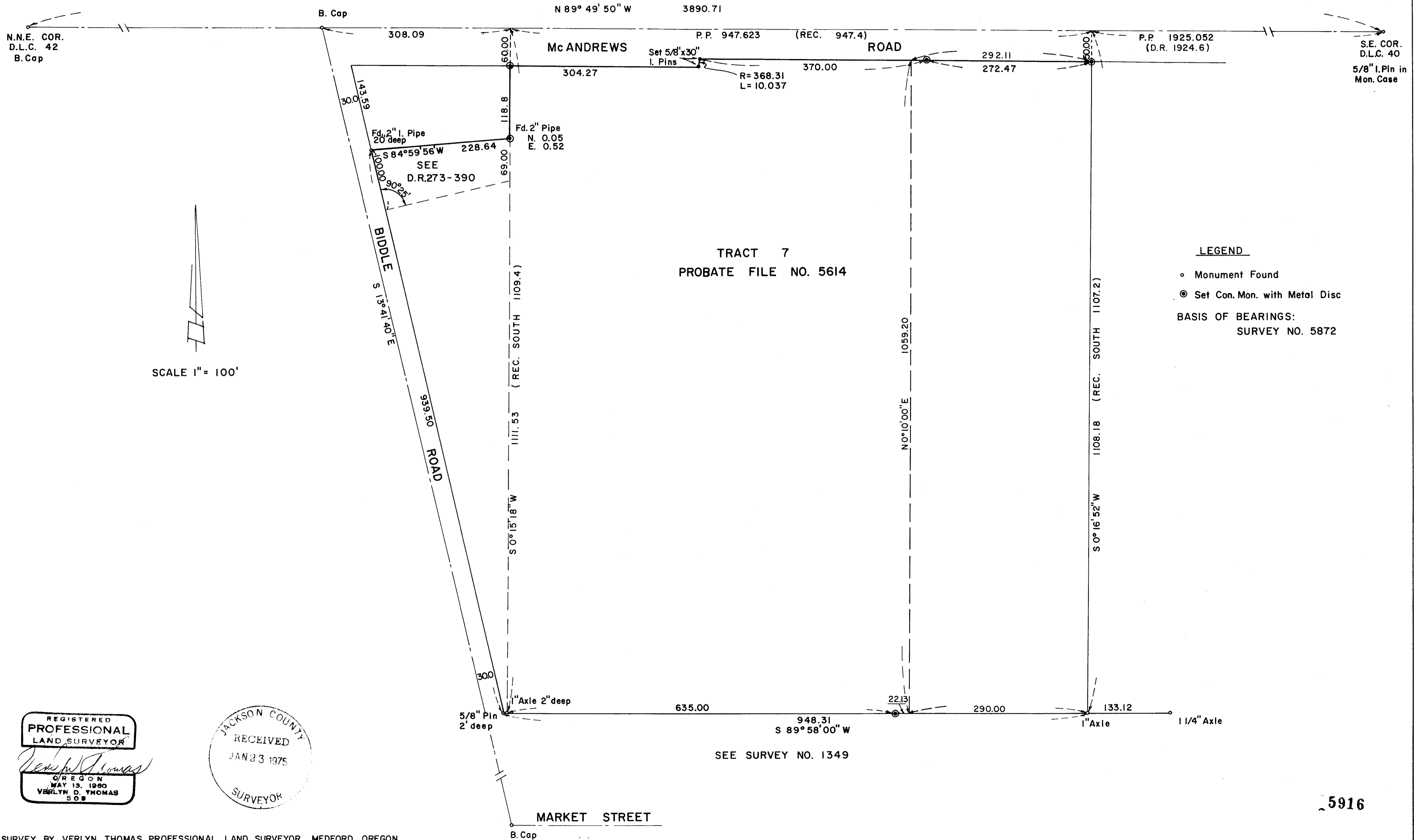


SURVEY FOR HOWARD S. WRIGHT DEVELOPMENT COMPANY

SECTION 19, T. 37 S., R. 1 W., W. M.
MEDFORD, OREGON

December, 1974



REGISTERED
PROFESSIONAL
LAND SURVEYOR

Verlyn D. Thomas

OREGON
MAY 13, 1960
VERLYN D. THOMAS
508

JACKSON COUNTY
RECEIVED
JAN 23 1975
SURVEYOR

SURVEY NARRATIVE TO COMPLY WITH O.R.S. 209.250
 REVISED BY CHAPTER 655, O.L. 1963

FOR: Howard S. Wright Development Co.
 P.O. Box 3764
 Seattle, Washington

PURPOSE: To survey and monument a tract according to furnished legal descriptions.

PROCEDURE: Research revealed the tract to be a portion of the Alla R. Phipps Estate, being Tract 7, and a portion of Tract 8, said Estate. Further research produced a "Survey Certificate" dated September 10th, 1932 by surveyor H.D. Powell certifying he had surveyed the Estate into eight tracts, and "staked" them. A search of the private files of H.D. Powell (now deceased) produced the original survey manuscript, and descriptions of the monuments set in the survey.

A survey, measuring distances with a Model 6A geodimeter and angles with a Wild Model TI-AE theodolite was conducted between the North Northeast corner of D.L.C. 42, and the Southeast corner of D.L.C. 40, and the various other monuments recovered. The axles recovered were original monuments established by Powell. Unfortunately, the original monuments on the north end of the tracts have been destroyed by street widening projects. The positions for the northerly corners of Tract 7 were determined by proportional measurement between the two D.L.C. corners, and monuments established on the present right of way line. The parcel lying between Tract 7 and Biddle Road was determined according to existing legal descriptions, and monumented as shown on the accompanying plat.

