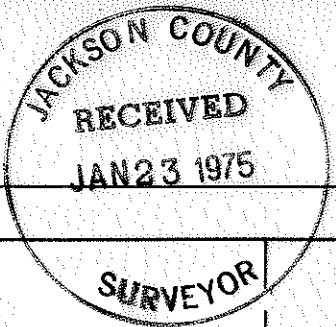
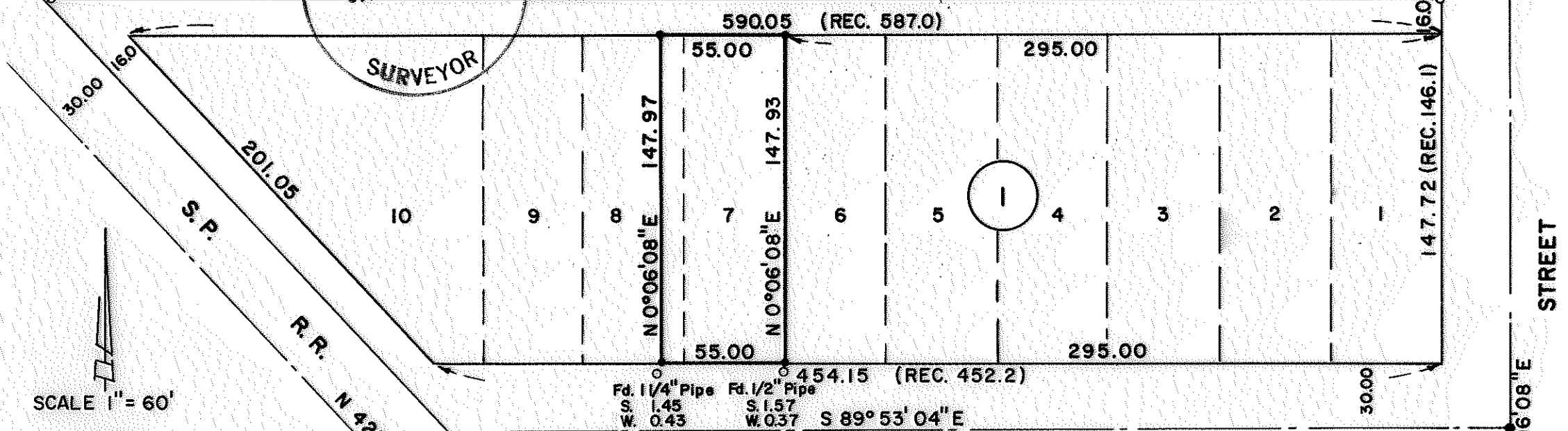


5914



SEE SURVEY NO. 1884
0.21 3/4" Pipe

SEE SURVEY NO. 203
1/2" Axle



SCALE 1" = 60'

LEGEND

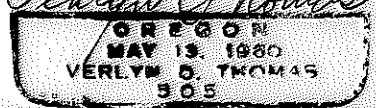
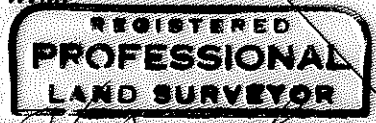
- Monument Found
- 5/8" x 24" Iron Pin Set
- 3/4" x 30" Iron Pin Set

SURVEY FOR JAMES SUPPLE

LOT 7 & E. 10' LOT 8, BLOCK 1
SHIDELER'S ADDITION TO TALENT, OREGON
S.W. 1/4 SEC. 23, T. 38 S. R. 1 W., W.M.

BASIS OF BEARINGS:

SURVEY NO. 5688



Verlyn Thomas

N.W. COR. D.L.C. 64
2" I. Pipe

S 89° 55' 31" E 2669.814

605.85

N.E. COR. D.L.C. 64
B. CAP

5914

Survey No. 5914

SURVEY NARRATIVE TO COMPLY WITH O.R.S. 209.250
REVISED BY CHAPTER 555, O.L. 1963

FOR: James Supple
P.O. Box 207
Talent, Oregon

PURPOSE: To survey and monument Lot 7 and the East 10 feet of Lot 8,
Block 1 of SHIDELER'S ADDITION to Talent, Oregon.

PROCEDURE: Traversed between Northeast and Northwest corners of D.L.C. 64 to establish the south line of the subdivision. The north line of the subdivision was established between the axle at Gibson Street, and the $\frac{3}{4}$ " pipe established by Recorded Survey No. 1884 as being on the railroad right of way. This line was produced North $89^{\circ}50'37''$ West, 0.21 feet to a point 50.00 feet, when measured at right angles, from the center of the railroad as now located.

Various unrecorded corner monuments along both sides of Fairview Street were tied in, and their relationship to the outside boundaries computed. It was also determined that the original plat contains numerous errors in mathematics, and that many of the recorded dimensions were not compatible with one another. In view of these numerous discrepancies, which clouds the intent of the original surveyor, and the location of the various unrecorded monuments found, it became inadvisable to apply the conventional pro-rate procedure.

The center line of Fairview Street was established midway between the axle and the D.L.C. line, and the lot lines established at plat record west from Gibson Street. The excess is then applied to the irregular lots adjacent to the Railroad. This procedure conforms quite closely to the apparent procedure used in establishing the unrecorded monuments found, and with present occupancy.

