

Survey For:

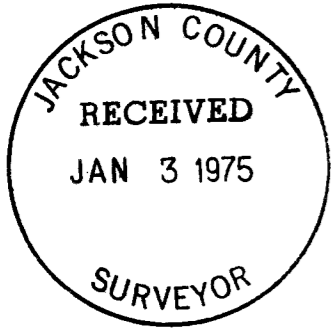
BOISE CASCADE CORP

Located in Section 2,

T. 33 S., R. 2 E., W.M

By: Mark E. Boyden

Dec. 26, 1974



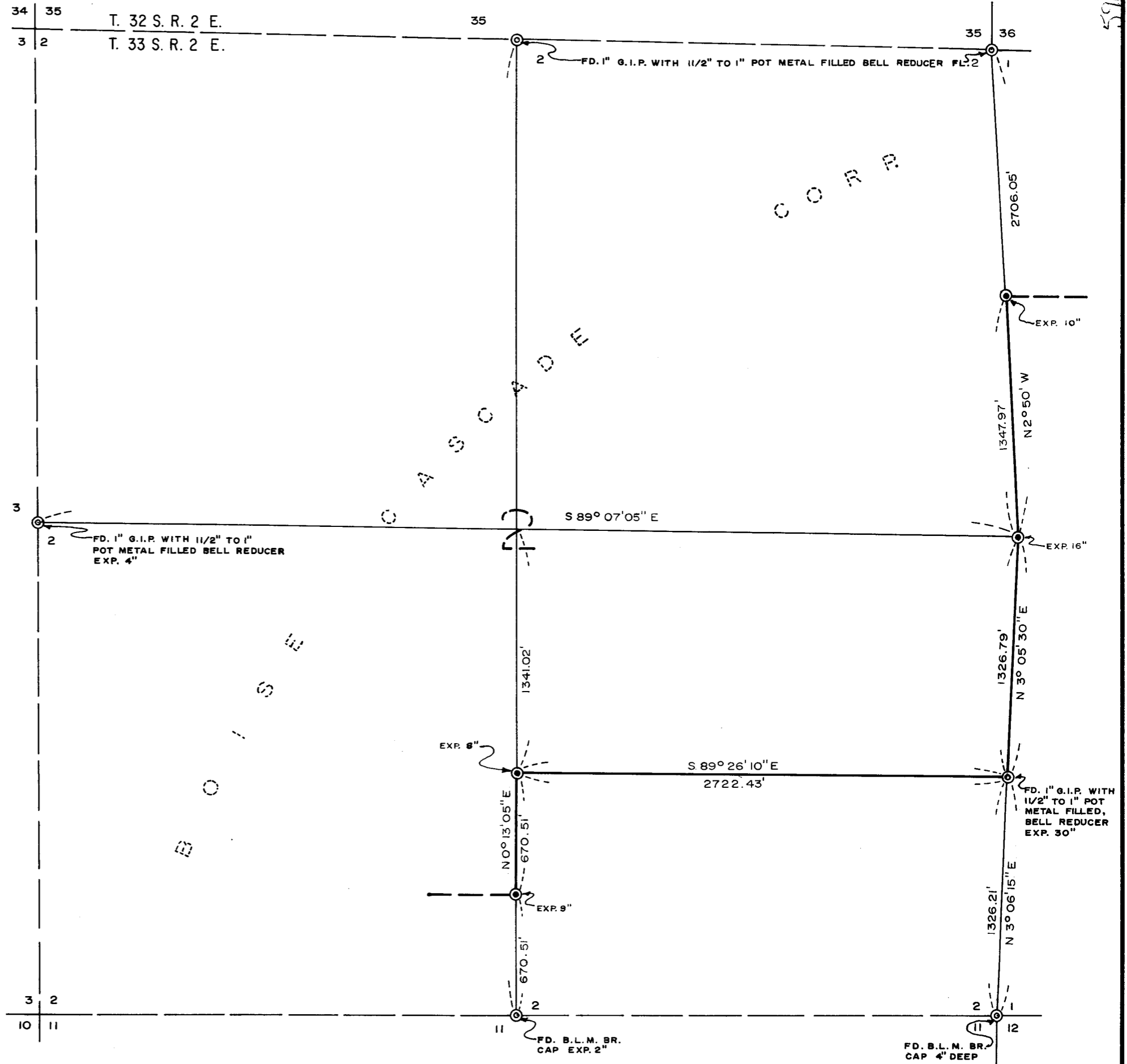
SCALE: 1" = 600'

BASIS OF BEARINGS
SOLAR OBSERVATION

- ⊙ FOUND MONUMENT AS INDICATED
- ⊙ SET 1"x36" G.I. PIPE WITH 1 1/2" EXPANDER FILLED WITH POTMETAL AS INDICATED

REGISTERED
PROFESSIONAL
LAND SURVEYOR

Mark E. Boyden
OREGON
NOV. 9, 1951
MARK E. BOYDEN
291



FOR: Bosie Cascade Corp.

At the "Center South" one-sixteenth corner of Section 2, set a 1" x 36" galvanized iron pipe with a 1 1/2" expander filled with pot metal stamped:

"T33SR2E
CS
1/16 . cor.
1974, exposed 8"

for corner, from which:

Scribed a 14" Fir, "CS 1/16 S2 - BT" which bears S23 1/4°E, 4.7 feet to the face of the lower blaze;

Scribed a 12" Fir, "CS 1/16 S2 - BT" which bears N56 3/4°E, 10.3 feet to the face of the lower blaze.

At the CSS one-sixty fourth corner of Section 2, set a 1" x 36" galvanized iron pipe with a 1 1/2" expander filled with pot metal, stamped:

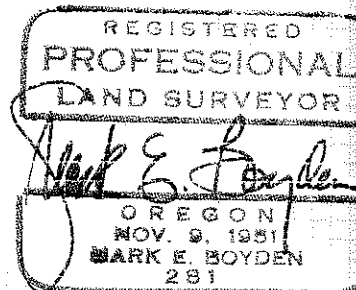
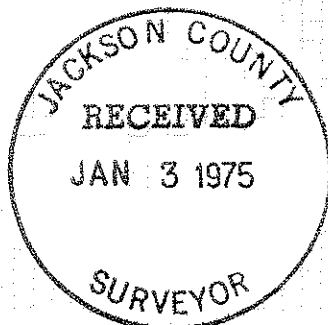
"Prop
.
Cor.
1974", exposed 9"

for corner, from which:

Set a nail with shiner near the base of a 7" White Oak which bears N48°W, 4.59 feet;

Set a nail with shiner near the base of a 6" White Oak which bears N60°E, 4.24 feet.

December 26, 1974



Survey No. 5906

SURVEY NARRATIVE TO COMPLY WITH O.R.S. 209.250.

FOR: Boise Cascade Corp.
P. O. Box 100
Medford, Oregon, 97501

PURPOSE: To monument corners on portions of Southerly and Easterly boundary of the Boise Cascade ownership in Section 2, T33SR2E, W.M.

PROCEDURE: Utilizing a one-second theodolite, an electronic measuring instrument and chain, enclosed the exterior boundaries of Section 2 by random traverse. Ties were made to all of the exterior corners of Section 2, excepting the Northwest corner thereof.

At the East Quarter corner of Section 2, found the monument set for corner on Recorded Survey No. 3816 bent over. The position of the two original bearing trees and the new bearing tree established on Recorded Survey No. 3816 were tied in to verify the location of said bent pipe. A new monument was set in the same position as the bent pipe to perpetuate this corner location.

At the South one-sixteenth corner common to Sections 1 and 2, found the corner monument and witness trees as established on Recorded Survey No. 3816.

At the West Quarter corner, the North Quarter corner and the Northeast corner of Section 2, found corner monuments as set on Recorded Survey No. 4718.

The South Quarter corner and the Southeast corner of Section 2 had previously been established by the County Surveyor and re-monumented by the B.L.M. in 1974.

At the North one-sixteenth corner common to Sections 1 and 2, set a 1" x 36" galvanized iron pipe with a 1 1/2" expander filled with pot metal stamped:

"T33SR2E
N
1/16 2¹/₁₆ cor.
1974

exposed 10" for corner, from which:

Scribed a 10" Alder, "N 1/16 S2 - BT" which bears N69 1/4°W, 45.5 feet to the face of the lower blaze;

Scribed a 15" White Fir, "N 1/16 S1 - BT" which bears N50 1/4°E, 36.7 feet to the face of the lower blaze.