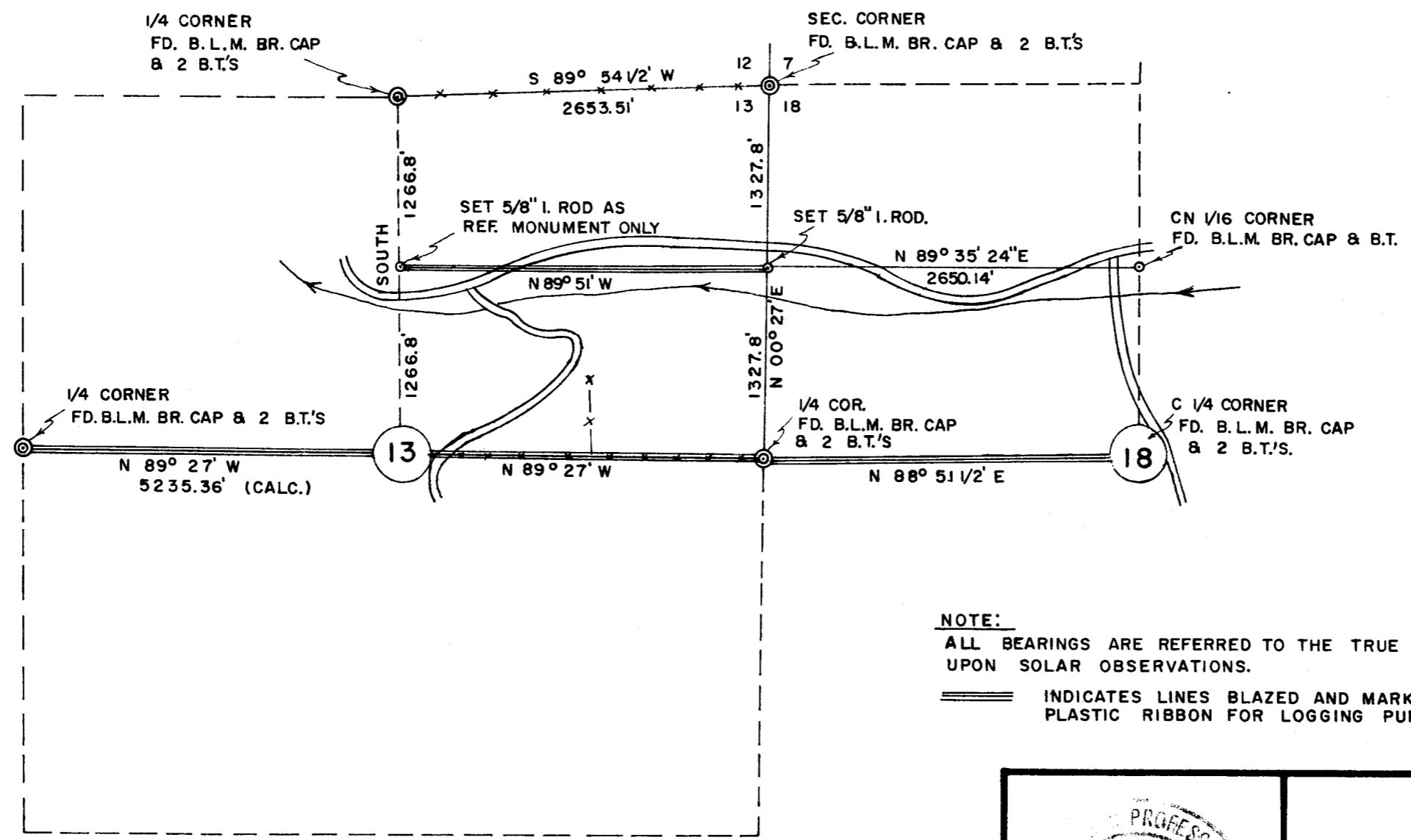


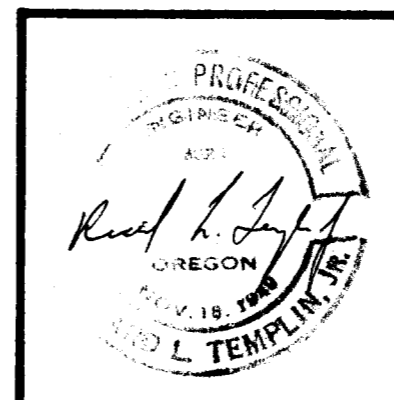
5789

R. 2 E.

R. 3 E.



NOTE:
 ALL BEARINGS ARE REFERRED TO THE TRUE MERIDIAN BASED
 UPON SOLAR OBSERVATIONS.
 == INDICATES LINES BLAZED AND MARKED WITH BLUE
 PLASTIC RIBBON FOR LOGGING PURPOSES.



RICHARD L. TEMPLIN
 CONSULTING ENGINEER

**PLAT OF DEPENDENT SURVEY
 PORTION OF SECTION 13 & 18**
 T. 37 S., R. 2 E. & R. 3 E., W. M.
 JACKSON COUNTY, OREGON

Surveyed For: Louisiana Pacific Corp., Central Point
 & Mountain Fir Lbr. Co., Murphy, Oregon.
 Scale: 1" = 1000' August 29, 1974.

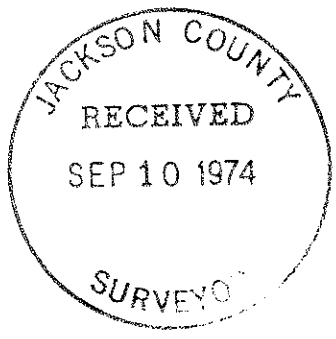
5789

I then set the North 1/16th section corner on a computed straight line and N. 00°27' E. of and 1327.8 feet distant from the East 1/4 corner of Section 13 previously described, said 1/16 th section corner being a 5/8th inch diam. iron rod , 30" in length set 4 inches under the surface of a pasture.

I then run N. 89°51' W . along the calculated south line of the N 1/2 of the NE 1/4 of Section 13, to the previously set 5/8th inch diameter iron rod reference monument. This line was then blazed and marked with plastic ribbon to designate the limits of timber cutting.

I then commence at the 1/8 corner common to Sections 13 and 18 previously described and run N. 88°51 1/2' E. to the Center 1/4 Corner as set and monumented by the BLM. I then blaze and mark said true line with blue plastic ribbon.

All bearings are referred to the true meridian based upon solar observations.



RICHARD L. TEMPLIN
CONSULTING ENGINEER
715 N.E. SIXTH STREET
GRANTS PASS, OREGON
97526

August 29, 1974



SURVEY NARRATIVE

Location: Sections 13 and 18, T. 37 S., R. 2 and 3 E., W.M.

Surveyed for: Louisiana Pacific Corp., Central Point, Oregon
Mountain Fir Lumber Co., Murphy, Oregon

Purpose: To establish the true east and west centerline of Section 13;
the south line of the $N\frac{1}{2}$ of the $NE\frac{1}{4}$ of Section 13, T. 37 S.,
R. 2 E. and the south line of the $NW\frac{1}{4}$ of Section 18, T. 37 S.,
R. 3 E.

The following corners were found with monuments and bearing trees
all in good condition or as described in the field notes of the
BLM, said corners all having 2 inch diameter iron pipes with stamped
brass caps;

Section 13, T. 37 S., R. 2 E.

West $\frac{1}{4}$ Corner
East $\frac{1}{4}$ Corner
Northeast Section Corner
North Quarter Corner

Section 18, T. 37 S., R. 3 E. (Subdivided by BLM)

Northwest Section corner
West $\frac{1}{4}$ Corner
Center Quarter Corner
Center North $1/16$ th Section Corner

A control traverse survey was made to the above established corners
using a K & E Microranger electronic distance measurement instrument
and a Wild- T16 ED theodolite. The lines between the monuments found
were the computed and the following lines were then run in the field to
verify the accuracy of the field work and computations.

Beginning at the $\frac{1}{4}$ Corner common to Sections 13 and 18 which is monumented
with a 2 inch diameter iron pipe with BLM brass cap as described in the BLM
field notes;

Thence N. $89^{\circ}27'$ W. on true east and west centerline of Section 13, which
I blaze and mark with blue plastic flagging for 5235.36 feet to the
west $\frac{1}{4}$ Corner of Section 13, which is also marked with a 2 inch diameter
iron pipe with brass cap as described in the BLM field notes.

I then set a $5/8$ th inch diameter iron rod, 30 ins. in length at a point
1266.8 feet south of the north $\frac{1}{4}$ corner of Section 13, using a computed
bearing and distance from a previously surveyed traverse point, said
iron rod being set as a reference monument only