

5697
5697

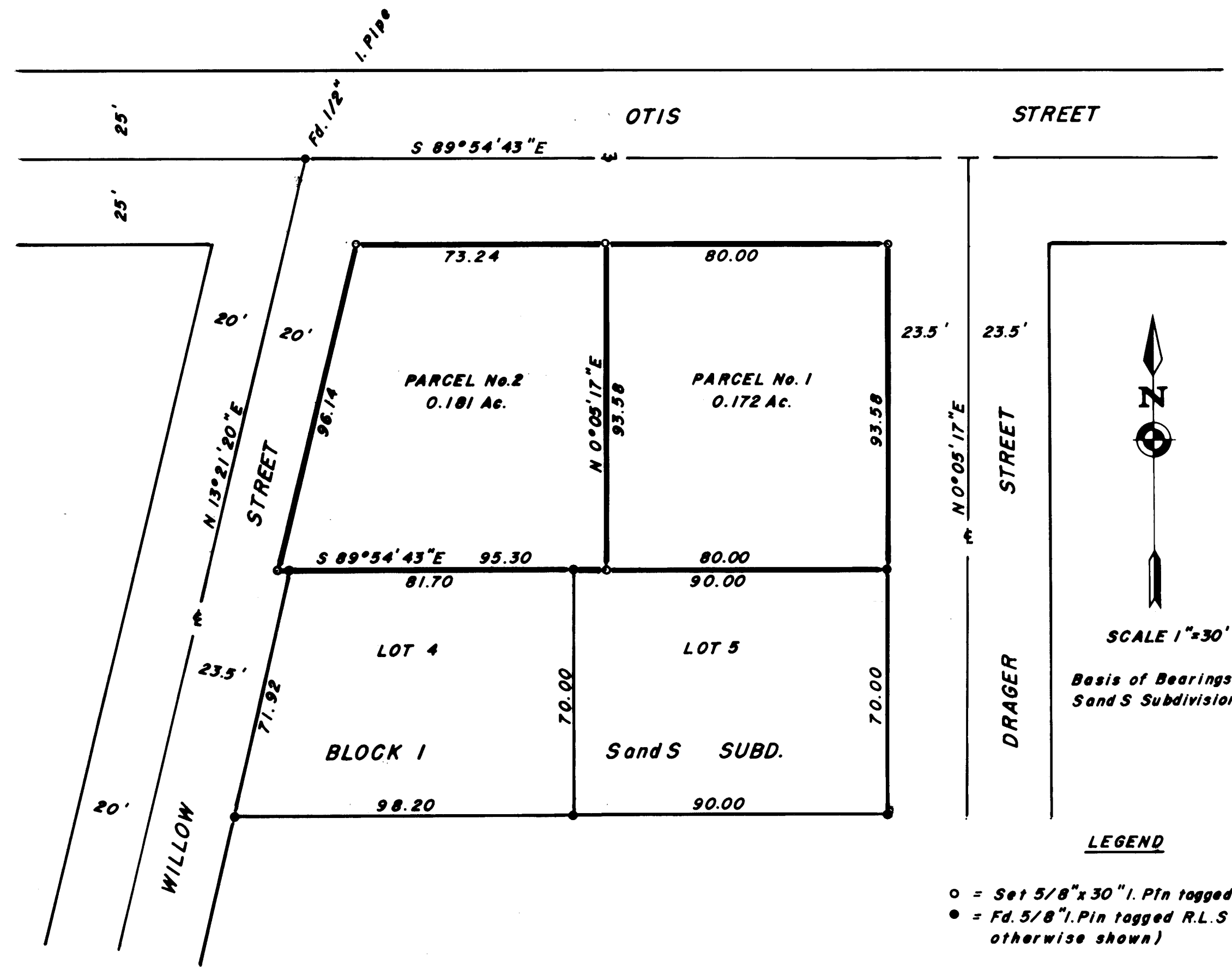
MINOR LAND PARTITION

LOCATED IN
THE CITY OF ASHLAND IN SEC. 4 and D.L.C. 40, T39S, R1E
FOR

CLAY GANGNES, 677 VALLEY VIEW ROAD, TALENT, OREGON

Filed for record this 3rd day of July, 1974
at 3:14 o'clock P.M. and recorded in Volume 1
of Maps on Page 7 of Jackson County records
County Clerk *Stan Crispman*
By: _____, Deputy

Filed in the Jackson County Surveyor's Office
as Recorded Survey No. 5697



Approved by the City of Ashland, Ore.
Planning Commission
By: *Stan Crispman*
Approved November 9, 1973

SCALE 1"=30'
Basis of Bearings:
Sand S Subdivision

LEGEND
○ = Set 5/8" x 30" I. Pin tagged R.L.S. 638
● = Fd. 5/8" I. Pin tagged R.L.S. 759 (unless otherwise shown)

SURVEYOR'S CERTIFICATE
I, George R. Burrell, duly Registered Surveyor of the State of Oregon, certify that this map correctly represents the survey made under my direction and complies with the regulations governing minor land partitions.

REGISTERED
PROFESSIONAL
LAND SURVEYOR
George Burrell
OREGON
JULY 10, 1964
GEORGE R. BURRELL

JACKSON COUNTY
RECEIVED
JUL 1974
SURVEYOR

Feb. 14, 1974

5697