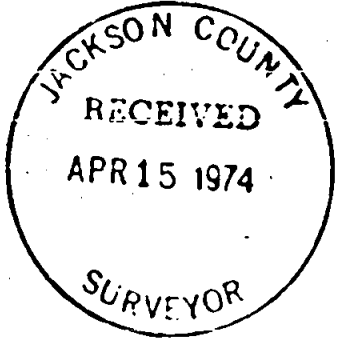


5624

SURVEY FOR DONALD BOYD
LOT 1, BLOCK 3, ORIGINAL TOWN OF PHOENIX
JACKSON COUNTY, OREGON
S.E. 1/4 SEC. 9, T. 38 S., R. 1 W., W.M.

March 27, 1974



LEGEND

- o Monument Found
- 5/8"x24" Iron Pin Set

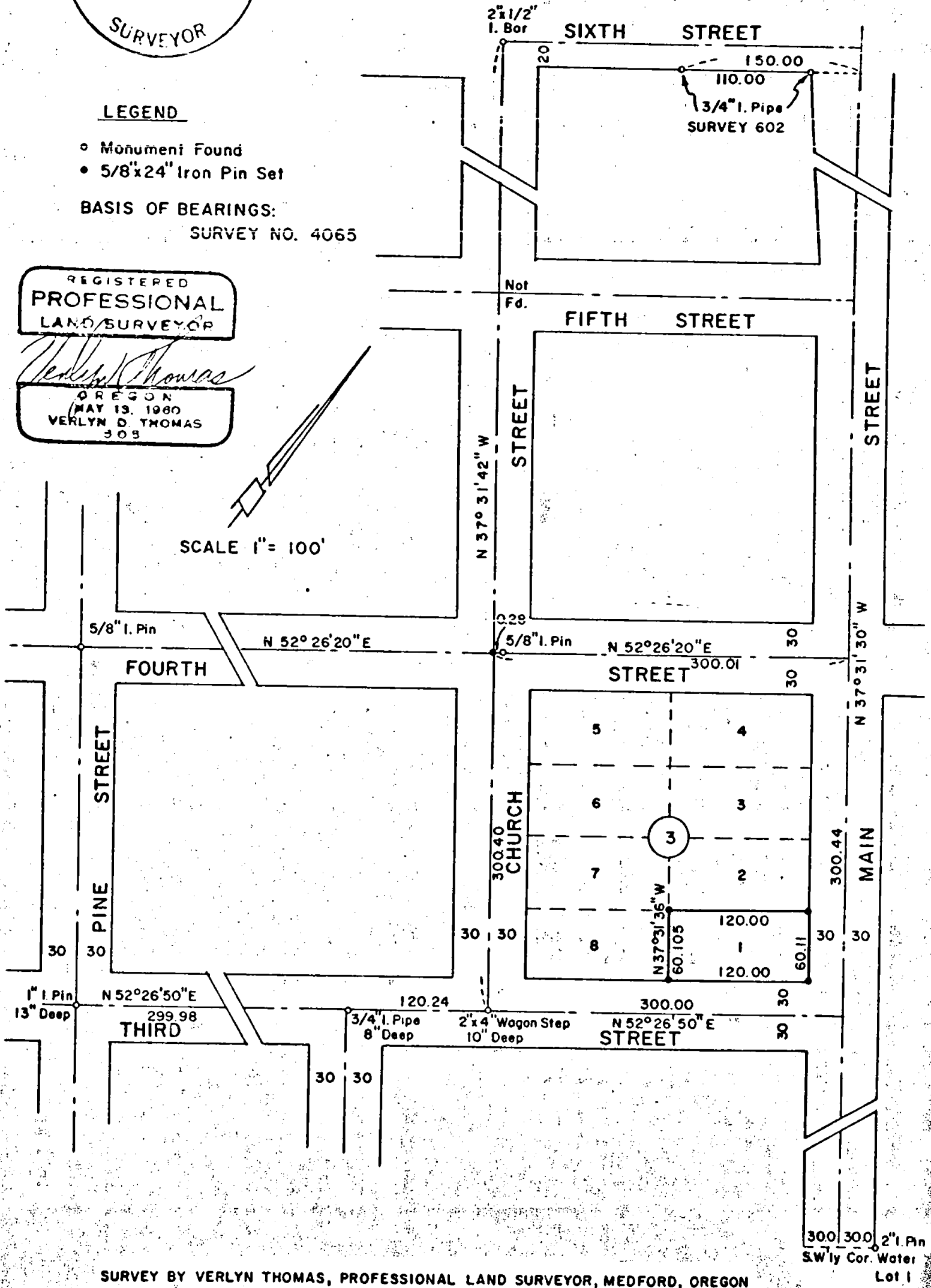
BASIS OF BEARINGS:
SURVEY NO. 4065

REGISTERED
PROFESSIONAL
LAND SURVEYOR

Verlyn Thomas

OREGON
MAY 13, 1980
VERLYN D. THOMAS
305

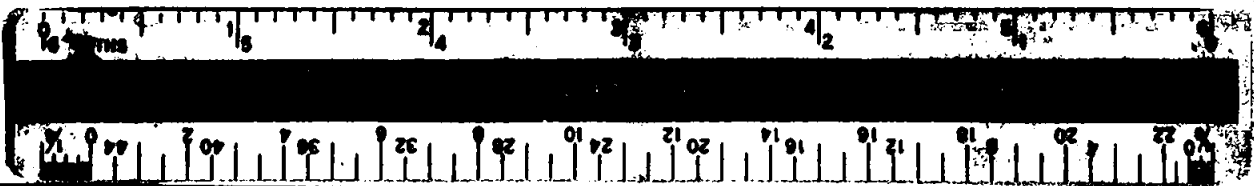
SCALE 1" = 100'



SURVEY BY VERLYN THOMAS, PROFESSIONAL LAND SURVEYOR, MEDFORD, OREGON

300.00 300.00 2" I. Pin
SW ly Cor. Water
Lot 1

5624



SURVEY NARRATIVE TO COMPLY WITH O.R.S. 209.250
REVISED BY CHAPTER 555, O.L. 1963

FOR: Donald Boyd
1555 South Columbus
Medford, Oregon

PURPOSE: To survey and monument Lot 1, Block 3 of the ORIGINAL TOWN
OF PROCLIX, OREGON.

PROCEDURE: Established the location of Main Street (Southbound U.S.
Highway 99) from the 2" iron pin monumenting the southwesterly corner
of Water Lot 1, and monuments established by Recorded Survey No. 602
in Block 5. Alignment of Fourth Street determined from monuments of
record.

The centerline of Church Street was established from a wagon
step found to monument the intersection of Church and Third Streets,
to the iron bar at Church and Sixth Streets. This alignment does not
conform to the monuments of record at Fourth and Fifth Streets. How-
ever, the relationship of the wagon step to the centerline of Main
Street corresponds to the original plat, whereas the previously accept-
ed center-line does not. Due to this relationship, and the obvious age
of the wagon step, the wagon step is felt to establish the superior
point of intersection. We poured concrete around said wagon step to
perpetuate it as the intersection monument.

The centerline of Third Street was extended to Main Street through
the monuments found, as shown on the accompanying plat.

From this street control, pro-rate data computed, and the lot
monumented accordingly.

