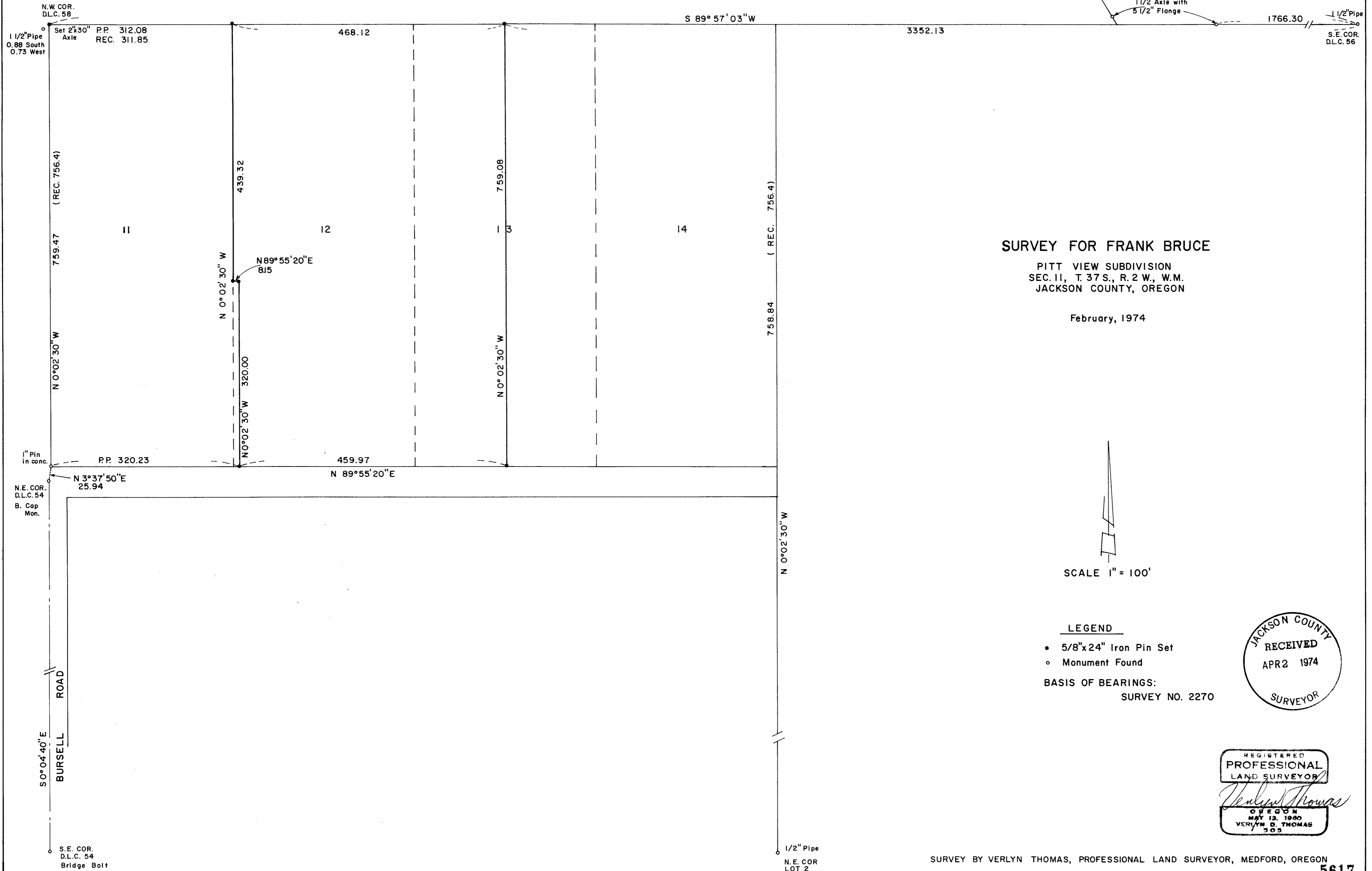


5617

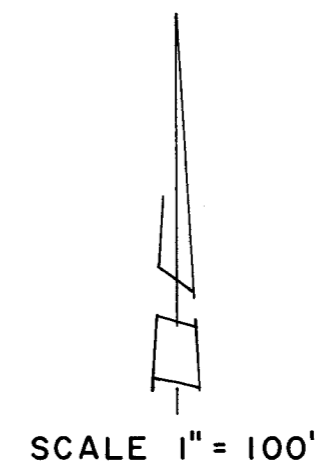
SEE SURVEY
NO. 166



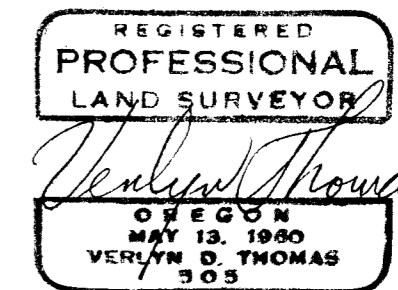
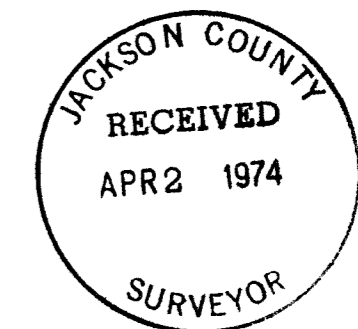
SURVEY FOR FRANK BRUCE

PITT VIEW SUBDIVISION
SEC. 11, T. 37 S., R. 2 W., W.M.
JACKSON COUNTY, OREGON

February, 1974



- LEGEND**
- 5/8"x24" Iron Pin Set
 - Monument Found
- BASIS OF BEARINGS:
SURVEY NO. 2270



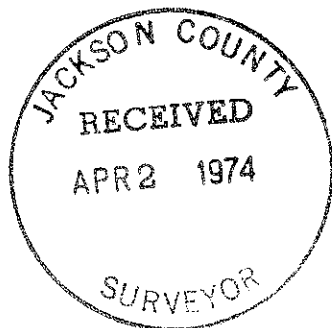
SURVEY BY VERLYN THOMAS, PROFESSIONAL LAND SURVEYOR, MEDFORD, OREGON

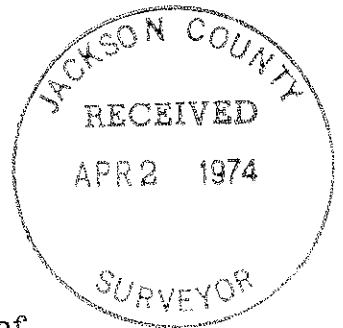
5617

Remeasurement of boundaries, attest Amended Plat of Lots 3 to 10 Inclusive, PITT VIEW SUBDIVISION, indicate data shown on the original plat might not be too reliable.

The North line of D.L.C. 58, assumed to be the north line of PITT VIEW SUBDIVISION, was established from the Southeast corner of D.L.C. 56, through the aforementioned axle, to an intersection with the previously described west line of Lot 11.

The east line of the Subdivision was established from a found $\frac{1}{2}$ " iron pipe monumenting the Northeast corner of Lot 2. Pro-rate data determined from these lines and the parcel monumented accordingly.



SURVEY NARRATIVE TO COMPLY WITH O.R.S. 209.250
REVISED BY CHAPTER 555, O.L. 1963

FOR: Frank Bruce
P.O. Box 1264
Medford, Oregon

PURPOSE: To survey and monument a parcel in Lots 12 and 13 of
PITT VIEW SUBDIVISION, Jackson County, Oregon.

PROCEDURE: A field search was conducted for original subdivision monuments indicated on the plat of PITT VIEW. No original monuments were recovered along the east boundary of the subdivision, at least three apparently being destroyed by buried water line construction. The iron pin indicated for the southwest corner of Lot 11 was recovered.

The original plat indicates an oak post monumenting the Northwest corner of D.L.C. 58, with the iron pin being on the west line of D.L.C. 58. It is curious that the plat of PITT VIEW is stamped by Registered Engineer Fred Cummings, and dated May, 1924. In 1910, SNOWY BUTTE ORCHARDS had been previously surveyed and monumented by Osgood and Cummings, setting a brass capped gas pipe monument for the northeast corner of SNOWY BUTTE ORCHARDS, yet this brass capped monument is not shown or referred to on the plat of PITT VIEW. This brass capped gas pipe monument is apparently the monument recovered by the County and designated as the reestablished Northeast corner of D.L.C. 54 in 1951. The west line of Lot 11 was determined by a projection of a line from the Southeast corner of D.L.C. 54 through the iron pin found to monument the southwest corner of Lot 11.

Research of surveys of record revealed Survey No. 166, showing monuments purported to be on the south line D.L.C. 56. No explanation is given on the plat or survey narrative as to just how this conclusion was reached, as there is no indication what, if any thing, was found to monument the Northwest corner of D.L.C. 58. Survey Nos. 442 and 1488 continue to refer to these monuments as being on the D.L.C. line. Repeated requests for information regarding this D.L.C. line from the original survey files brought no response. There is no positive indication on the plat of PITT VIEW that the surveyor determined the D.L.C. line at the time of platting. Since all bearings are North, South, East, or West, the procedure is questionable.