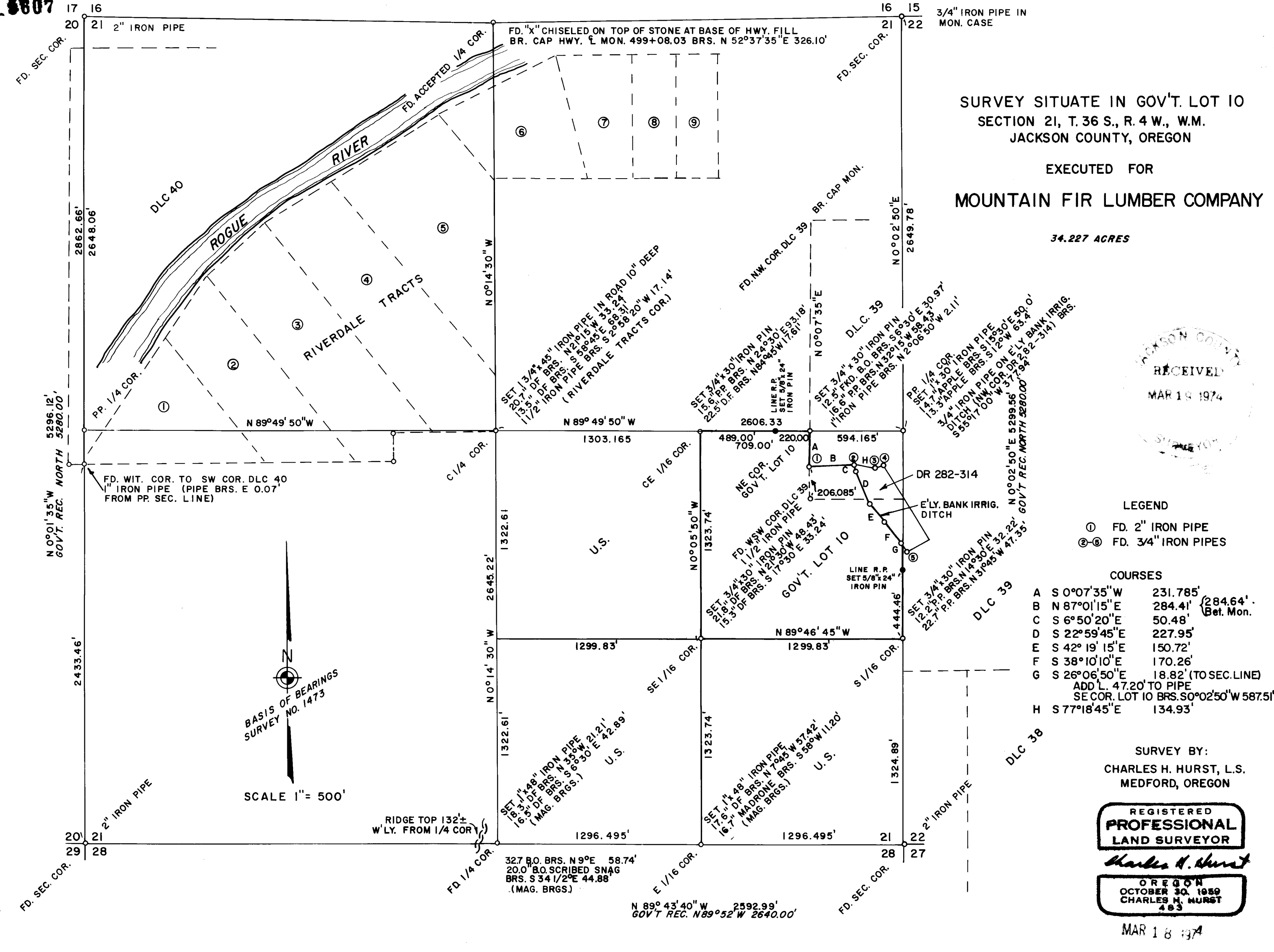


5607

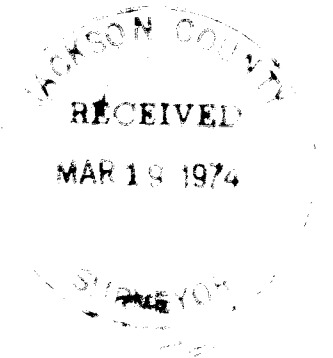
5607



SURVEY SITUATE IN GOV'T. LOT 10
SECTION 21, T. 36 S., R. 4 W., W.M.
JACKSON COUNTY, OREGON

EXECUTED FOR
MOUNTAIN FIR LUMBER COMPANY

34.227 ACRES



- LEGEND
- ① FD. 2" IRON PIPE
 - ②-⑤ FD. 3/4" IRON PIPES

COURSES

A	S 0° 07' 35" W	231.785'	} (284.64' Bet. Mon.)
B	N 87° 01' 15" E	284.41'	
C	S 6° 50' 20" E	50.48'	
D	S 22° 59' 45" E	227.95'	
E	S 42° 19' 15" E	150.72'	
F	S 38° 10' 10" E	170.26'	
G	S 26° 06' 50" E	18.82' (TO SEC. LINE)	
		ADD L. 47.20' TO PIPE	
		SE COR. LOT 10 BRS. S 0° 02' 50" W 587.51'	
H	S 77° 18' 45" E	134.93'	

SURVEY BY:
CHARLES H. HURST, L.S.
MEDFORD, OREGON

REGISTERED
PROFESSIONAL
LAND SURVEYOR

Charles H. Hurst

OREGON
OCTOBER 30, 1959
CHARLES H. HURST
483

MAR 18 1974

5607

It does not appear this corner has ever been recovered by anyone since the time it was originally set.

In view of the foregoing, the question of how Section 21 could possibly have been subdivided in 1911 in order to set a proper center 1/4 corner was raised, much less the NE corner of Government Lot 10 set in 1933, particularly in consideration of those corners found or set since that time.

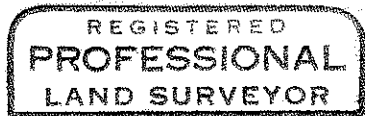
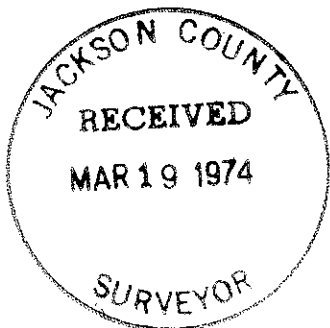
Accordingly, it was apparent the center 1/4 corner of Section 21 set in 1911 and the NE corner of Government Lot 10 set in 1933 could not be utilized in order to set the CE 1/16 and SE 1/16 corners of said Section.

A subdivision of Section 21 was made on the basis of a closed traverse utilizing a combination of a 200 foot calibrated steel tape, an electronic distance measuring device and a six second theodolite. All corners were set from points on the closed traverse.

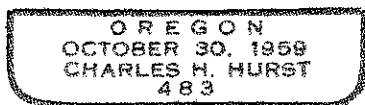
Existing monumentation along the westerly boundary of DR 282-314, the center of a maintenance road along the easterly side of an irrigation ditch, at the NW and SW corners of said Deed Record was held in addition to the monument found controlling the line against abutting land to the North between the irrigation ditch and DLC line. One record course along the westerly boundary of said Deed Record was determined to be in error by 8 feet. With due allowance for this error, said boundary was adjusted to close to the monuments found.

The 75 foot square of land with spring in center reserved per DR 274-539 is not shown. However, the acreage computed and shown on the attached plat reflects this reservation. The southeast corner of a retaining wall for a spring is located N 45°05'W 85.2 feet distant from the WSW corner of DLC 39.

March 18, 1974



Charles H. Hurst



SURVEY NARRATIVE TO COMPLY WITH PARAGRAPH 209.250

OREGON REVISED STATUTES



Survey for: Mountain Fir Lumber Co.
6890 Williams Highway
Grants Pass, Oregon 97526

Survey by : Charles H. Hurst, L.S.
23 North Ivy Street
Medford, Oregon 97501

Bearing : Meridian from Survey No. 1473 (East boundary of Section 21).

Purpose : To monument the corners and define the boundaries of tract described in Instrument No. 68-11931 of Official Records, Jackson County, Oregon.

Procedure

In order to set the corners of Government Lot 10 in accordance with the Manual of Instructions for the Survey of the Public Lands of the United States, it first became necessary to locate the existing corners of the original 1854 government survey. Inspection of the public record revealed that the SW corner of DLC 40 and the NW and WSW corners of DLC 39 had been reestablished as well as the NE, SE, NW and SW corners of Section 21.

In 1884, Jackson County Surveyor J. Jeffrey ran East 40.00 chains from the NW corner of Section 21 and raised a pile of cobblestones for the 1/4 corner, no reference to the original corner was made. In 1911, C.F. Rhodes performed the survey of Riverdale Tracts, the plat for which indicates said 1/4 corner between Sections 16 and 21. Whether the same is the corner set by Jeffrey in 1884 or the original set in 1854 is not specified and supported by corroborative measurement. The SE corner of Lot 4 of Riverdale Tracts is identified on the official plat as the center of Section 21, also unsupported by corroborative measurement. In 1933, a Jackson County Deputy Surveyor set the NE corner of Government Lot 10, the record for which is not supported by any confirming measurements.

The E 1/4 corner was set by single proportion in 1960 during the course of Survey No. 1473. The W 1/4 corner was not set in 1854, the same falling in the Rogue River.

Accordingly, a thorough search was made for the meander corners on the west line of Section 21 and a number of very old and large oak trees were tied into the survey control net. No relation with these trees to government record could be determined. Therefore, on a straight line basis, the witness pipe to the SW corner of DLC 40, set by a Jackson County Deputy Surveyor in 1940, also becomes a witness to the single proportion 1/4 corner location, suspected to be more by design than coincidence on the part of said Deputy.

The cross chiseled on the rock identified as the accepted N 1/4 corner of Section 21 was recovered after much digging along the foot of the highway fill. This corner appears to be the corner either set or used by Rhodes in 1911 and has been considered to be a valid corner by a number of surveyors in times past. This corner was held as the N 1/4 for this survey inasmuch as no evidence was found in justification for holding some other position.

The single proportion E 1/4 corner of Section 21, a 1/2" iron pin set during the course of Survey No. 1473, was not initially recovered. When the 1" iron pipe was set, it was subsequently found to have displaced said iron pin some 8" below the ground. Accordingly, the actual amount of displacement, if any, could not be determined.

Much effort in the search for the S 1/4 corner of Section 21 was made including running the section line West from the section corner with compass and chain, without immediate success. A single proportion location was determined after accurately measuring the full mile. Fortunately, upon return to the vicinity, evidence of the original 1854 corner was discovered thus precluding the establishment of said corner in other than the original position, much to the relief of all concerned.