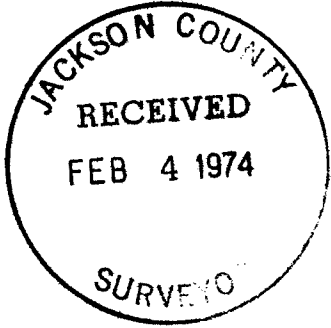


BOUNDARY SURVEY FOR  
MARQUSS & MARQUSS  
ENGINEERS

SECTION 17, T. 37 S., R. 1 W., W.M.  
CITY OF MEDFORD, JACKSON COUNTY, OREGON

January 16, 1974

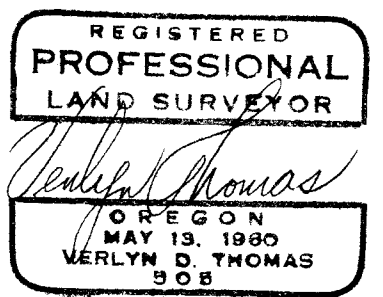
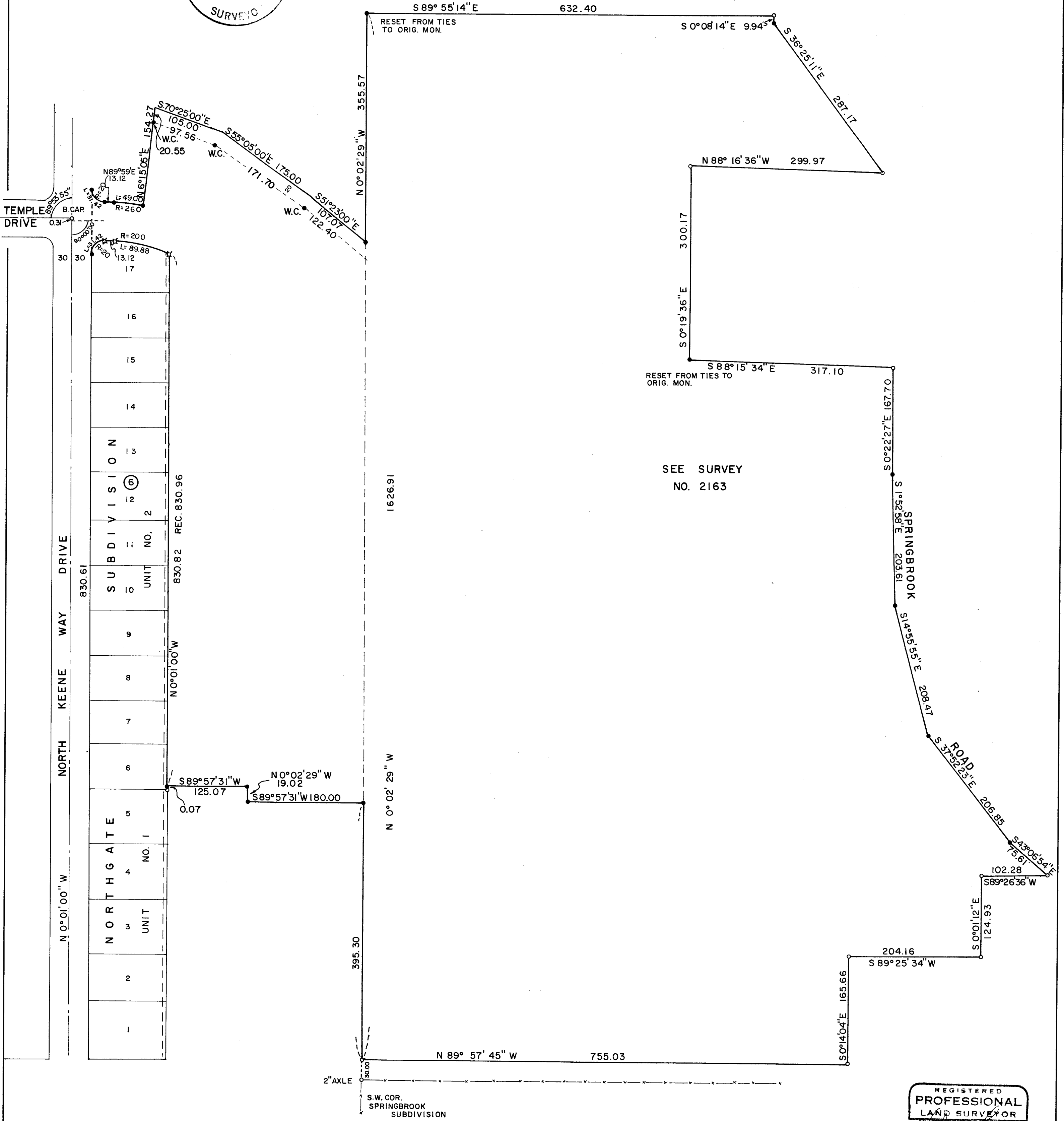


SCALE 1" = 100'

LEGEND

- ✕ 3/4" Iron Pin Found
- 5/8" Iron Pin Found
- 3/4"x30" Iron Pin Set

BASIS OF BEARING: Furnished  
description for KEENE WAY DRIVE  
of N 0° 01' 00" W



5570

SURVEY NARRATIVE TO COMPLY WITH O.R.S. 209.250  
REVISED BY CHAPTER 555, O.L. 1963

FOR: Marquess & Marquess, Engineers  
Goldy Building  
Medford, Oregon

PURPOSE: To survey and monument the outside boundary of metes and bounds according to furnished legal description.

## PROCEDURE:

A portion of this property had been previously surveyed and monumented by surveyor Lovejoy in 1963 (Recorded Survey No. 2163). A retracement of Survey No. 2163 revealed minor differences in bearings and distances between recovered monuments. Comparison between the two plats will reveal these differences.

The angle points along Springbrook Road which were not originally monumented in Recorded Survey No. 2163, were monumented at compass adjusted locations between monuments recovered, resulting in the bearings and distances shown.

Two monuments established by said Survey 2163 were destroyed by City of Medford construction activity before this present survey was completed, and were therefore reset at the original locations from survey ties made before their destruction.

Additional monuments were then established as shown on the accompanying plat.

