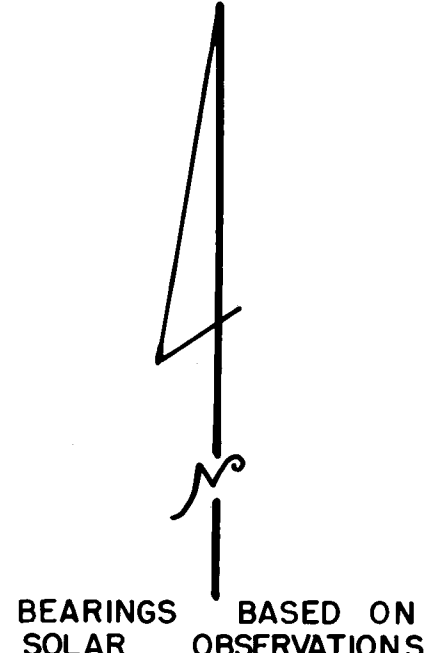
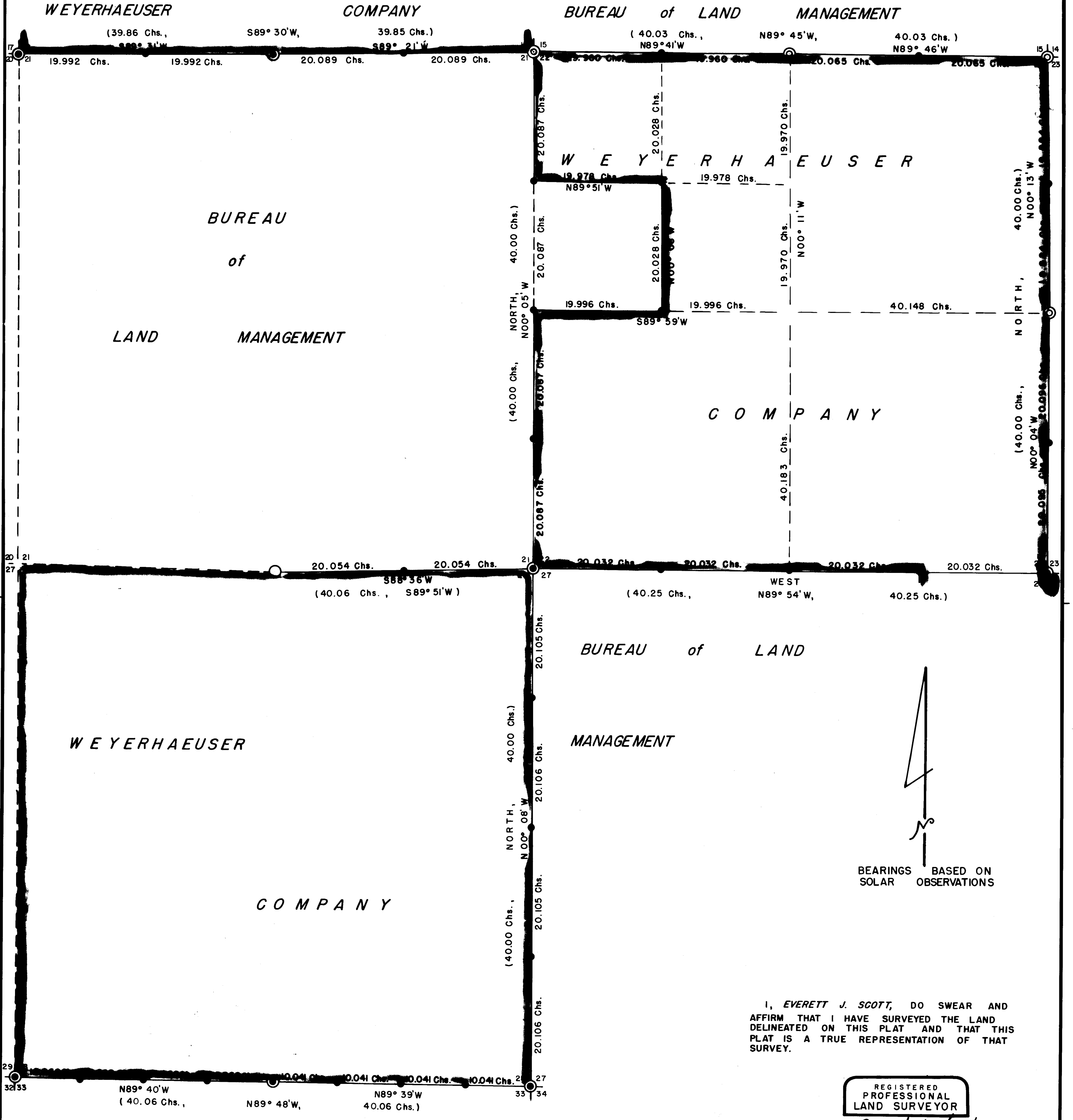


5552

T 39 S

R 04 E



I, EVERETT J. SCOTT, DO SWEAR AND AFFIRM THAT I HAVE SURVEYED THE LAND DELINEATED ON THIS PLAT AND THAT THIS PLAT IS A TRUE REPRESENTATION OF THAT SURVEY.


REGISTERED PROFESSIONAL LAND SURVEYOR
Everett J. Scott
 OREGON
 JULY 10, 1964
 EVERETT J. SCOTT
 661

JACKSON COUNTY
 RECEIVED
 JAN 29 1974
 SURVEYOR

Bearings & distances of record are from General Land Office notes by Sewell Truax, under contract no. 80 dated July 8th, 1859.

- ⊙ Found Brass Cap
- Found Corner
- ⊙ Found Corner, Set SurvKAP
- Set SurvKAP this survey

RETRACE & SUBDIVISION
 Secs 21, 22 & 28, T39S, R04E W.M.
 JACKSON COUNTY, OREGON

 **Weyerhaeuser Company**
 Klamath Falls Branch

SCALE — 1" = 10 Chains DATE — DEC. 26, 1973
 DEL. — *H.A.C.* CHECKED BY — *C.L.C.*
 TRACED — *H.A.C.* DRAWING No — LS 73-8

5552

5552

8878
5552

29 | 28
32 | 33
1973
ORLS 661

Set a SurvKAP in center of found 3/4" Iron Pipe and from which bears:
A 10" Pine, N60°E, 36.0 Lks. (B.T. - Gone)
A 6" Pine, S57°E, 7.0 Lks. (B.T. now 14")
A 7" Cedar, S79°W, 12.0 Lks. (B.T. - Dead & Down)
A 20" Pine, N31°W, 77.0 Lks. (B.T. now 24")

All SurvKAPs are affixed atop a 5/8" x 30" I.R. which is set in a mound of stone.

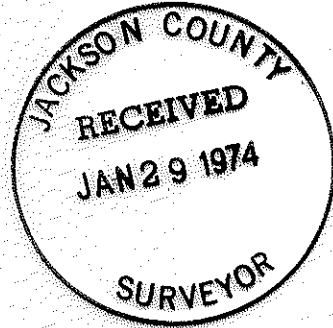
All bearings and distances are to 'W' nails set in the base of the described reference trees.

This survey was initiated by Creal H. Hammersley (ORLS 686) and completed by Everett J. Scott (ORLS 661).

Garry R. Clark
Garry R. Clark
Party Chief

Approved by:

Everett J. Scott
Everett J. Scott
Woods Engineer



E 1/16 $\frac{21}{28}$
1972
ORLS 686

Set a SurvKAP from which bears:
A 6" Fir, S41⁰E, 26.0 Lks.
A 6" Fir, N72⁰W, 10.8 Lks.

N 1/16
28 | 27
1972
ORLS 686

Set a SurvKAP from which bears:
A 12" White Fir, S50⁰E, 25.0 Lks.
An 8" White Fir, N 68⁰W, 24.5 Lks.

1/4
28 | 27
1972
ORLS 686

Set a SurvKAP by appropotional measure after having determined the corner to have been lost and from which bears:
An 18" Douglas Fir, S11⁰E, 22.0 Lks.
A 9" Douglas Fir, N51⁰W, 12.5 Lks.

S 1/16
28 | 27
1972
ORLS 686

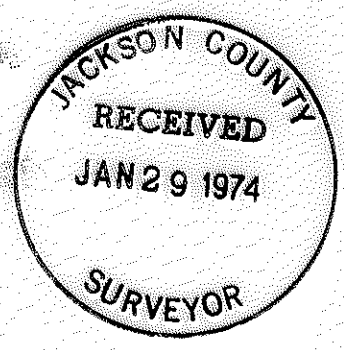
Set a SurvKAP from which bears:
A 6" Ponderosa Pine, N46⁰E, 26.8 Lks.
A 5" Black Oak, S80⁰W, 29.1 Lks.

28 | 27
33 | 34
1972
ORLS 686

Set a SurvKAP from described B.T.s and which bears:
A 12" Black Oak, N22⁰E, 101.0 Lks. (B.T. now 15")
An 8" Ponderosa Pine, S61⁰E, 56.0 Lks. (B.T. now 12")
A 36" Sugar Pine, S51⁰W, 41.0 Lks. (B.T. - Dead)
A 22" Ponderosa Pine, N28⁰W, 39.0 Lks. (B.T. now 28")
and established:
A 10" Black Oak, S20⁰W, 44.1 Lks.

EE 1/64 $\frac{28}{33}$
1973
ORLS 661

Set a SurvKAP from which bears:
A 12" Cedar, S05⁰W, 30.2 Lks.
An 8" Black Oak, N05⁰W, 56.1 Lks.



E 1/16 $\frac{28}{33}$
1973
ORLS 661

Set a SurvKAP from which bears:
A 4" Cedar, N45⁰E, 46.8 Lks.
A 4" Ponderosa Pine, S58⁰E, 27.4 Lks.

WE 1/64 $\frac{28}{33}$
1973
ORLS 661

Set a SurvKAP from which bears:
A 6" Ponderosa Pine, N15⁰W, 36.0 Lks.
A 4" Ponderosa Pine, S31⁰E, 21.4 Lks.

1/4 $\frac{28}{33}$
1973
ORLS 661

Set a SurvKAP inside found 3/4" Iron Pipe from which bears:
A 28" Pine, N12⁰E, 23.0 Lks. (B.T. - Gone)
A 20" Pine, S63⁰E, 65.0 Lks. (B.T. - Stump)
Established the following references:
A 14" White Fir, S05⁰E, 15.0 Lks.
A 10" White Fir, N32⁰W, 23.4 Lks.

EW 1/64 $\frac{28}{33}$
1973
ORLS 661

Set a SurvKAP from which bears:
A 5" Ponderosa Pine, S82⁰W, 30.5 Lks.
A 14" Juniper, S82⁰E, 33.0 Lks.

W 1/16 $\frac{28}{33}$
1973
ORLS 661

Set a SurvKAP from which bears:
A 4" Ponderosa Pine, S10⁰E, 67.0 Lks.
A 12" Cedar, N10⁰W, 54.0 Lks.

WW 1/64 $\frac{28}{33}$
1973
ORLS 661

Set a SurvKAP from which bears:
A 6" Fir, N03⁰W, 14.9 Lks.
A 6" Fir, S55⁰W, 31.2 Lks.

Found Brass Cap as set and referenced by the Cadastral Surveyors.

$\frac{22}{27} | \frac{23}{26}$
1967

E 1/16 $\frac{22}{27}$
1972
ORLS 686

Set a SurvKAP from which bears:
A 5" White Fir, S66°E, 23.8 Lks.
A 9" White Fir, S12°W, 34.0 Lks.

1/4 $\frac{22}{27}$
1972
ORLS 686

Set a SurvKAP by appropotional measure as no evidence exists of original corner and from which bears:
A 5" White Fir, N14°E, 39.2 Lks.
A 14" White Fir, S61°E, 20.6 Lks.

W 1/16 $\frac{22}{27}$
1972
ORLS 686

Set a SurvKAP from which bears:
A 10" Juniper, S72°E, 91.8 Lks.
A 5" Black Oak, S42°W, 52.0 Lks.

$\frac{21}{28} | \frac{22}{27}$
1972
ORLS 686

Replaced Found described stone with a SurvKAP from which bears:
A 40" Pine, N38°E, 50.0 Lks. (B.T.)
A 40" Pine, S63°E, 108.0 Lks. (B.T.)
A 36" Pine, S12°W, 64.0 Lks. (B.T. - Dead)
A 30" Pine, N47°W, 88.0 Lks. (B.T. - Dead & Down)

Established the following references:
A 14" Douglas Fir, S13°W, 7.5 Lks.
A 10" Cedar, N03°W, 38.2 Lks.

S 1/16
 $\frac{21}{27} | \frac{22}{27}$
1972
ORLS 686

Set a SurvKAP from which bears:
A 5" White Fir, N58°E, 10.3 Lks.
A 6" White Fir, S02°W, 23.4 Lks.

1/4
 $\frac{21}{27} | \frac{22}{27}$
1972
ORLS 686

Set a SurvKAP by appropotional distance as the corner was determined as lost and from which bears:
An 11" White Fir, N76°E, 24.8 Lks.
A 9" Douglas Fir, N09°W, 22.9 Lks.

N 1/16
 $\frac{21}{27} | \frac{22}{27}$
1972
ORLS 686

Set a SurvKAP from which bears:
A 26" Cedar, S38°E, 30.0 Lks.
A 16" Ponderosa Pine, N52°W, 12.4 Lks.

WC 1/16
S22
1972
ORLS 686

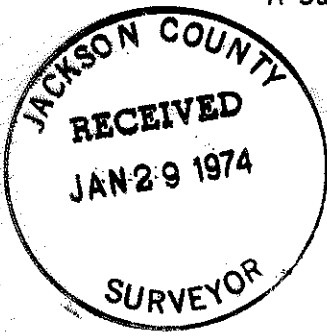
Set a SurvKAP from which bears:
A 12" Douglas Fir, N22°E, 10.2 Lks.
A 9" Ponderosa Pine, S80°W, 24.7 Lks.

NW 1/16
S22
1972
ORLS 686

Set a SurvKAP from which bears:
A 4" White Oak, S26°E, 6.0 Lks.
A 5" Black Oak, N44°W, 23.2 Lks.

1/4 $\frac{21}{28}$

Found described 6" Pine scribed 1/4S on North face from which bears:
A 20" Fir, S32°30' E, 27.0 Lks. (B.T. - Dead & Down)
An 18" Fir, N30°W, 40.0 Lks. (B.T. - Gone)
Established the following references:
An 18" Cedar, N34°E, 39.2 Lks.
An 11" White Fir, S44°W, 30.0 Lks.
A SurvKAP, N87°19'E, 5.0 Lks. and is stamped:



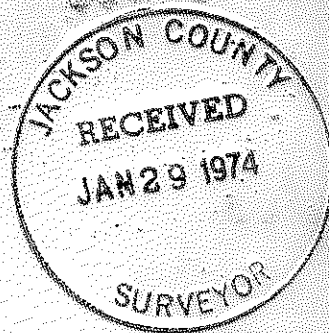
REF
← $\frac{1}{4} \frac{21}{28}$
1972
ORLS 686

WEYERHAEUSER COMPANY
KLAMATH FALLS BRANCH

RETRACE & SUBDIVISION
Sections 21, 22, & 28, T39S, R04E, W.M.
Jackson County, Oregon

5882

5552



This Survey was begun in November, 1969 and was started as an overall development of the area to perpetuate existing corners, set additional corners, and mark the property lines as shown on the accompanying plat.

17 | 16
20 | 21
1969
ORLS 686

Replaced Found described stone with a SurvKAP from which bears:
A 36" White Fir, N18⁰E, 98.0 Lks. (B.T. now 60")
A 48" Red Fir, S28⁰E, 59.0 Lks. (B.T. now 60")
An 18" White Fir, N49⁰W, 23.0 Lks. (B.T. Dead & Down)

W 1/16 16
21
1969
ORLS 686

Set a SurvKAP from which bears:
An 11" White Fir, S57⁰E, 30.5 Lks.
An 11" White Fir, N05⁰W, 46.7 Lks.

1/4 16
21
1969
ORLS 686

Replaced Found described stone with a SurvKAP from which bears:
A 36" Cedar, S40⁰E, 44.0 Lks. (B.T. now 60")
A 10" White Fir, N17⁰W, 24.0 Lks. (B.T. now 42")

E 1/16 16
21
1969
ORLS 686

Set a SurvKAP from which bears:
A 14" Ponderosa Pine, S10⁰W, 14.6 Lks.
A 9" White Fir, N60⁰W, 15.3 Lks.

16 | 15
21 | 22
1966

Found Brass Cap as set and referenced by the Department of the Interior, Bureau of Land Management, Cadastral Surveyors.

W 1/16 15
22
1972
ORLS 686

Set a SurvKAP from which bears:
A 14" Fir, N30⁰E, 36.5 Lks.
A 7" Cedar, N72⁰W, 16.3 Lks.

1/4 15
22
1966

Found Brass Cap as set and referenced by the Cadastral Surveyors.

E 1/16 15
22
1972
ORLS 686

Set a SurvKAP from which bears:
A 7" White Fir, S30⁰E, 16.1 Lks.
A 7" White Fir, N80⁰W, 62.2 Lks.

15 | 14
22 | 23
1966

Found Brass Cap as set and referenced by the Cadastral Surveyors.

N 1/16
22 | 23
1972
ORLS 686

Set a SurvKAP from which bears:
A 12" White Fir, S16⁰W, 50.0 Lks.
An 8" White Fir, S48⁰W, 49.5 Lks.

1/4
22 | 23
1966

Found Brass Cap as set and referenced by the Cadastral Surveyors.

S 1/16
22 | 23
1972
ORLS 686

Set a SurvKAP at base at large boulder from which bears:
A 20" Ponderosa Pine, S65⁰E, 50.5 Lks.
A 26" Ponderosa Pine, N20⁰W, 46.5 Lks.