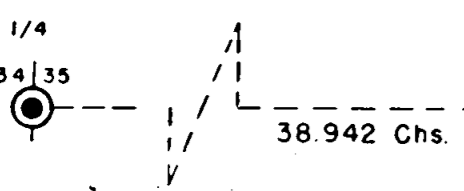
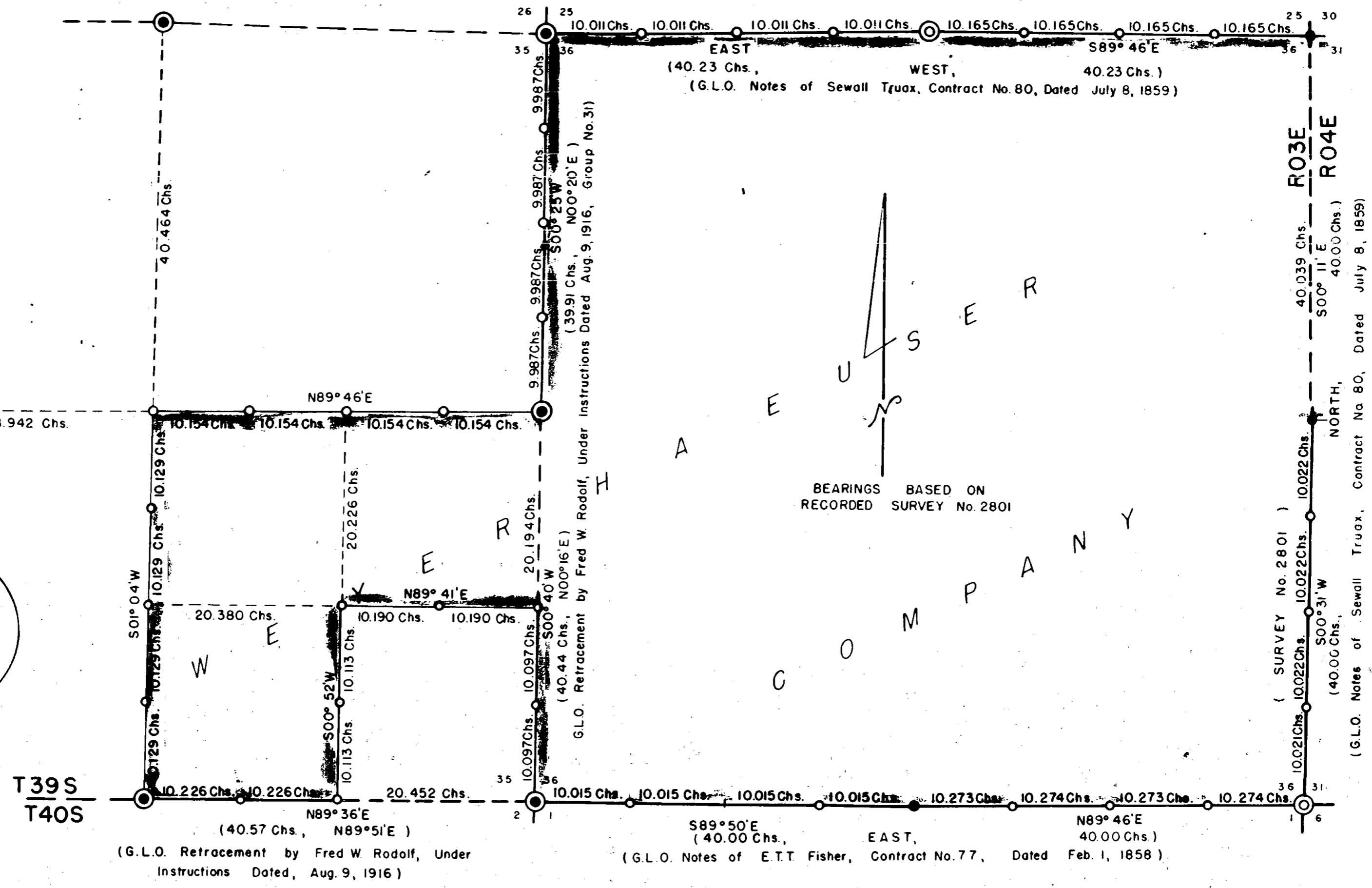


5349




JACKSON COUNTY
RECEIVED
JAN 29 1974
SURVEY



- FOUND Brass Cap - General Land Office.
- ◎ FOUND Brass Cap - County Surveyor.
- FOUND Corner, Set SurvKAP.
- Set SurvKAP This Survey.

I, EVERETT J. SCOTT, do swear and affirm that I have surveyed and monumented the land delineated on this plat and that this plat is a true representation of that survey.

REGISTERED PROFESSIONAL LAND SURVEYOR
Everett J. Scott
OREGON
JULY 10, 1964
EVERETT J. SCOTT
661

RETRACE & SUBDIVISION Secs 35 & 36, T39S, R03E W.M. Jackson County, Oregon	
 Weyerhaeuser Company Klamath Falls Branch	
SCALE - 1" = 10 Chains	DATE - Dec. 10, 1973
DEL. - HAC	CHECKED BY - C.L.C.
TRACED - HAC	DRAWING No. LS 73-7

5540
5549

- WE 1/64 $\frac{36}{1}$ Set a SurvKAP from which bears:
A 5" Cedar, S54⁰W, 33.0 Lks.
A 7" Cedar, N28⁰W, 31.6 Lks..
- 1/4 $\frac{36}{1}$ Set a SurvKAP from described B.T.s which bear:
A 20" Cedar, N70⁰W, 10.0 Lks. (B.T. - now 22" Juniper)
A 20" Cedar, S57⁰E, 37.0 Lks. (B.T. - now 21" Juniper)
- EW 1/64 $\frac{36}{1}$ Set a SurvKAP from which bears:
A 14" Cedar, N85⁰E, 34.6 Lks.
- W 1/16 $\frac{36}{1}$ Corner falls in water way of Talent Irrigation District Canal,
did not set but did establish the following references which bear:
A 9" Douglas fir, North, 47.8 Lks.
A 10" White fir, S88⁰W, 31.0 Lks.
- WW 1/64 $\frac{36}{1}$ Set a SurvKAP from which bears:
A 9" Douglas fir, N12⁰E, 15.1 Lks.
An 11" Douglas fir, S76⁰E, 13.0 Lks.

All SurvKAPs are affixed atop a 5/8" x 30" Iron Rod that is set in a mound of stone. All SurvKAPs are also stamped:

WEYERHAEUSER

1973
ORLS 686

All bearings and distances to reference trees are to a 'W' nail set in the base of the described tree.

This Survey was initiated under Creal H. Hammersley (ORLS 686) and completed by Everett J. Scott (ORLS 661).

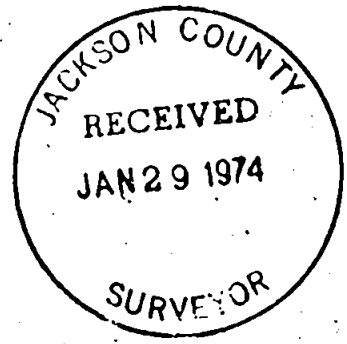
Garry R. Clark

Garry R. Clark
Party Chief

Approved by:

Everett J. Scott

Everett J. Scott
Woods Engineer



5549

EW 1/64 $\frac{25}{36}$ Set a SurvKAP from which bears:
A 19" Juniper, S22⁰W, 9.2 Lks.
A 7" Cedar, N53⁰W, 58.6 Lks.

1/4 $\frac{25}{36}$ Found Brass Cap as set and described by Jackson County Surveyor (1973).

WE 1/64 $\frac{25}{36}$ Set a SurvKAP from which bears:
An 8" Juniper, S36⁰W, 100.0 Lks.
A 16" Juniper, N76⁰W, 81.1 Lks.

E 1/16 $\frac{25}{36}$ Set a SurvKAP from which bears:
An 8" Juniper, S70⁰W, 54.0 Lks.

EE 1/64 $\frac{25}{36}$ Set a SurvKAP from which bears:
An 8" White fir, S20⁰W, 60.9 Lks.
A 10" White fir, N62⁰W, 73.5 Lks.

R3-4E

$\frac{25}{36} \mid \frac{30}{31}$

Set a SurvKAP from the two remaining B.T.s
An 11" Fir, N38⁰E, 40.0 Lks. (B.T. - gone)
An 8" Fir, S79⁰E, 36.0 Lks. (B.T. - gone)
A 15" Fir, S42⁰W, 50.0 Lks. (B.T. - now 16" and dead)
A 14" Fir, N64⁰W, 65.0 Lks. (B.T. - now 27" and dead)
Established the following references which bear:
A 5" Black oak, S70⁰E, 9.0 Lks.
A 20" White fir, S11⁰E, 53.0 Lks.
A 9" Douglas fir, N13⁰W, 72.3 Lks.

1/4
 $36 \mid 31$

Set a SurvKAP from described B.T.s which bear:
A 30" Pine, N36⁰E, 31.0 Lks. (B.T. - dead)
A 36" Pine, N67⁰W, 19.0 Lks. (B.T. - dead)
Established reference trees which bear:
An 18" Cedar, S51⁰E, 19.3 Lks.
A 7" Douglas fir, S64⁰W, 14.5 Lks.

NS 1/64
 $36 \mid 31$

Set a SurvKAP in Corral Creek from which bears:
A 9" Cedar, N74⁰E, 27.2 Lks.
A 6" Cedar, S12⁰W, 24.9 Lks.

S 1/16
 $36 \mid 31$

Set a SurvKAP from which bears:
A 4" Oak, N04⁰E, 46.5 Lks.
A 16" Juniper, S69⁰W, 105.8 Lks.

SS 1/64
 $36 \mid 31$

Set a SurvKAP from which bears:
A 13" Juniper, N31⁰W, 30.2 Lks.

T39S
R3E R4E
 $\frac{36}{1} \mid \frac{31}{6}$
T40S

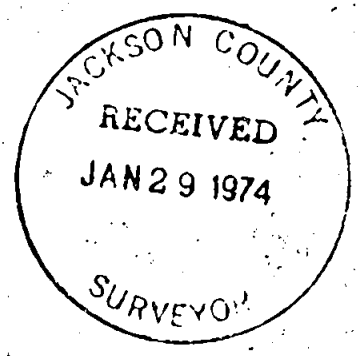
Found Brass Cap as set and described by Jackson County Surveyor (1973).

EE 1/64 $\frac{36}{1}$

Set a SurvKAP from which bears:
A 22" Douglas fir, S72⁰W, 24.1 Lks.
An 11" Douglas fir, N20⁰W, 13.1 Lks.

E 1/16 $\frac{36}{1}$

Set a SurvKAP from which bears:
A 14" Juniper, S40⁰W, 75.0 Lks.
A 6" Juniper, N07⁰W, 26.0 Lks.



CEE 1/64
Sec. 35

Set a SurvKAP from which bears:
A 9" Douglas fir, N64°E, 76.5 Lks.
A 10" Douglas fir, N59°W, 12.2 Lks.

ECSE 1/64
Sec. 35

Set a SurvKAP from which bears:
A 14" Cedar, S11°E, 73.2 Lks.
A 7" Ponderosa pine, S80°W, 54.7 Lks.

26 | 25
35 | 36

Found Brass Cap as described by the General Land office from which bears:
A 10" Fir, S30°E, 39.0 Lks. (B.T. now 13" diameter)
A 15" Fir, S47°W, 48.0 Lks. (B.T. Dead)
A 30" Sugar pine, N27°W, 37.0 Lks. (B.T. now 44" diameter)
A 24" Sugar pine, N47°E, 57.0 Lks. (B.T. now 37" diameter)

NH 1/64
35 | 36

Set a SurvKAP from which bears:
A 14" Douglas fir, S06°E, 20.1 Lks.
A 7" Cedar, S46°W, 27.2 Lks.

N 1/16
35 | 36

Set a SurvKAP from which bears:
A 5" Cedar, N24°W, 7.4 Lks.

SN 1/64
35 | 36

Set a SurvKAP from which bears:
An 8" White fir, S34°W, 16.8 Lks.
A 9" Douglas fir, S77°W, 44.3 Lks.

1/4
35 | 36

Found Brass Cap as described by the General Land office from which bears:
A 20" Cedar, N02°E, 36.0 Lks. (B.T. Juniper now 26" diameter)
A 15" Cedar, S05°W, 62.0 Lks. (B.T. Juniper now 18" diameter)
Established the following reference:
A 10" Juniper, N45°W, 23.5 Lks.

S 1/16
35 | 36

Set a SurvKAP from which bears:
An 18" Juniper, N45°E, 50.9 Lks.
A 28" Juniper, N15°W, 37.0 Lks.

SS 1/64
35 | 36

Set a SurvKAP from which bears:
A 14" White fir, N60°E, 13.6 Lks.
A 14" Sugar pine, S30°W, 54.0 Lks.

35 | 36
2 | 1

Found Brass Cap set by Fred Radolf.
His notes call the cap: The cap is instead stamped:



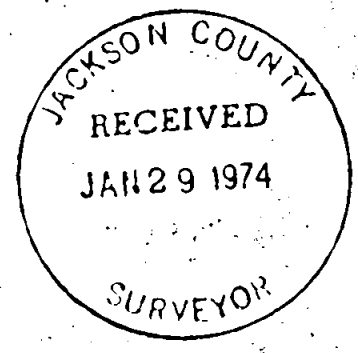
From which bears:
A 60" Fir, N65°E, 37.0 Lks. (B.T. stump)
A 30" Fir, S45°E, 42.0 Lks. (Gone)
An 18" Cedar, S35°W, 35.0 Lks. (B.T. now 34" diameter)
An 13" Cedar, N10°W, 53.0 Lks. (B.T. now 34" diameter)
Established the following reference:
A 9" White fir, N62°E, 51.2 Lks.
A 17" White fir, S61°E, 59.3 Lks.

WW 1/64 25
36

Set a SurvKAP from which bears:
A 6" Douglas fir, N30°E, 26.0 Lks.
A 10" White fir, N25°W, 12.9 Lks.

N 1/16 25
36

Set a SurvKAP from which bears:
A 9" Cedar, N25°E, 71.5 Lks.
A 14" Cedar, South, 51.0 Lks.



MEYERHAEUSER COMPANY

KLAMATH FALLS BRANCH

RETRACE & SUBDIVISION

Sections 35 and 36, T39S, R03E, W.H.
Jackson County, Oregon

5549

The following narrative describes the corners that were found, those that were set and accessories.

- 1/4
34 | 35

Found Brass Cap as described by the General Land office from which bears:
 A 16" Fir, S61°15'E, 160.0 Lks. (B.T. now 48" diameter)
 A 20" fir, N23°W, 8.0 Lks. (B.T.O.D.)
 Established a reference:
 A 6" White fir, N35°W, 15.5 Lks.
- 1/4 26
35

Found Brass Cap as described by the General Land office.
 Established the following reference trees:
 A 9" White fir, S14°E, 24.0 Lks.
 A 5" White fir, N53°W, 67.0 Lks.
- C 1/4
Sec. 35

Set a SurvKAP from which bears:
 An 8" White fir, S26°W, 20.3 Lks.
 A 7" White fir, N33°W, 14.4 Lks.
- NISC 1/64
Sec. 35

Set a SurvKAP from which bears:
 A 10" White fir, N36°E, 13.0 Lks.
 An 3" White fir, S25°W, 25.8 Lks.
- SC 1/16
Sec. 35

Set a SurvKAP from which bears:
 An 8" White fir, N27°E, 43.5 Lks.
 An 8" White fir, S16°W, 36.2 Lks.
- SSC 1/64
Sec. 35

Set a SurvKAP from which bears:
 A 9" Cedar, S76°E, 43.1 Lks.
 A 12" Ponderosa pine, S72°W, 25.6 Lks.
- 1/4 35
2

Found corner as described on Recorded Survey #4757
- CWE 1/64
Sec. 35

Set a SurvKAP from which bears:
 An 11" Cedar, N20°E, 15.5 Lks.
 A 12" Ponderosa pine, S36°E, 7.7 Lks.
- WE 1/64 35
2

Set a SurvKAP from which bears:
 An 8" Ponderosa pine, S49°E, 13.9 Lks.
 A 5" White fir, N03°W, 22.8 Lks.
- EC 1/16
Sec. 35

Set a SurvKAP from which bears:
 A 9" Douglas fir, N56°E, 14.0 Lks.
 A 10" White fir, S36°W, 40.1 Lks.
- SE 1/16
Sec. 35

Set a SurvKAP from which bears:
 A 6" White fir, N34°E, 17.0 Lks.
 A 7" White fir, S60°W, 17.3 Lks.
- SCSE 1/64
Sec. 35

Set a SurvKAP from which bears:
 An 13" Cedar, S32°W, 24.5 Lks.
- E 1/16 35
2

Set a SurvKAP from which bears:
 A 12" White fir, N53°E, 22.1 Lks.
 An 8" Douglas fir, S34°W, 27.1 Lks.

