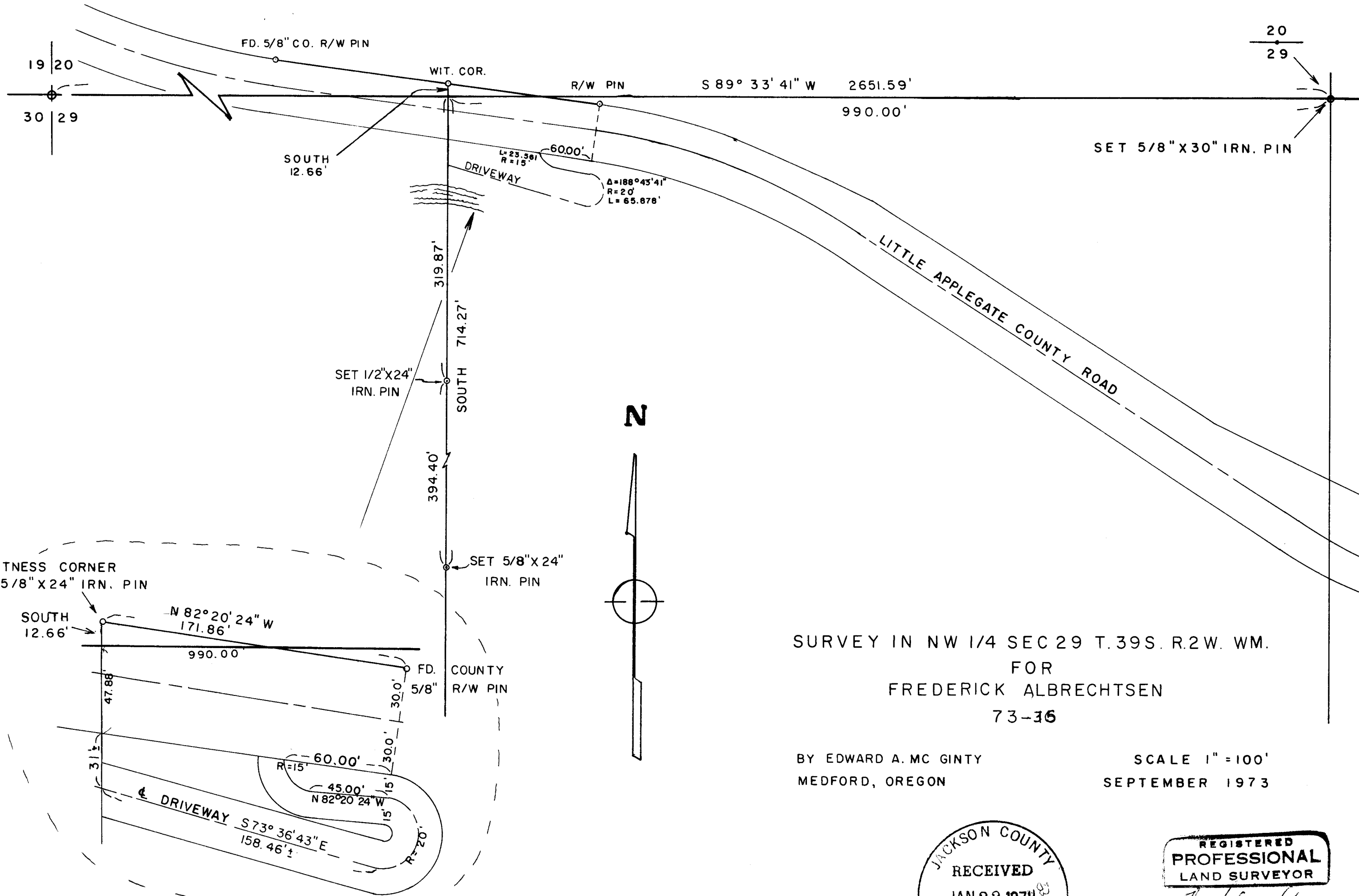


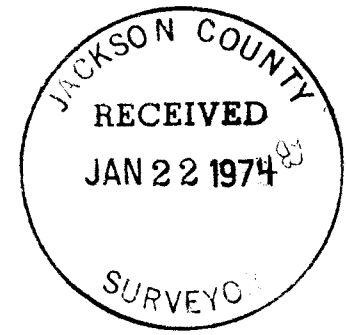
5526



SURVEY IN NW 1/4 SEC 29 T.39S. R.2W. WM.
 FOR
 FREDERICK ALBRECHTSEN
 73-36

BY EDWARD A. MC GINTY
 MEDFORD, OREGON

SCALE 1" = 100'
 SEPTEMBER 1973



5526

SURVEY NARRATIVE TO COMPLY WITH O.R.S. 209-250

SURVEY FOR: Frederick Albrechtsen
5288 Little Applegate Road
Jacksonville, Oregon 97530

73-36

SURVEY BY: Edward A. McGinty, R.S.
Medford, Oregon
September, 1973

BASIS OF BEARING: Survey No. 5228

LOCATION: N.W. 1/4, Sec. 29, T39S, R2W

PRECEDENCE OF SURVEY:

From previous traverse of a survey for Hinson, surveyed Easterly to the 1/4 corner which I set a 5/8 inch iron pin by 30 inch, approx. flush with the surface, from which;

Original Bearing Tree, now a White Oak, approx. 40" diam., bears N.16°30'E. 51.48 feet.

White Oak, 12" diam., bears N.45°07'W., 44.3 feet, scribe LS 1/4 BT about 30 yrs. ago.

White Oak, 12" diam., bears N.77° 55'E., 24.3 feet, scribe LS 1/4 BT about 30 yrs. ago.

A 3/4" pipe bears N.3°38'20" W., 23.76 feet.

Found old line blaze running easterly from the corner. The Original Bearing Tree had evidence of both blaze with lower portion of "T". The Upper blaze was previously opened by the County Surveyor in 1969. The tree had a badly deteriorated interior. See Corner Report #43.

Set Witness Corner 12.66 feet North of line and 990 feet Westerly from the 1/4 corner. This monument serves as an approx. corner of the Easterly 30 acres, of the Northeast quarter of the Northwest quarter.

