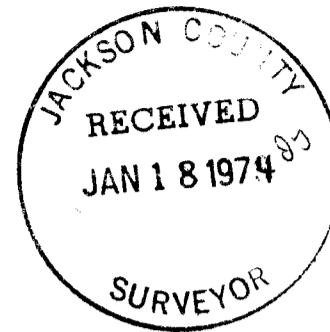


SURVEY FOR:  
**BOISE CASCADE CORPORATION**

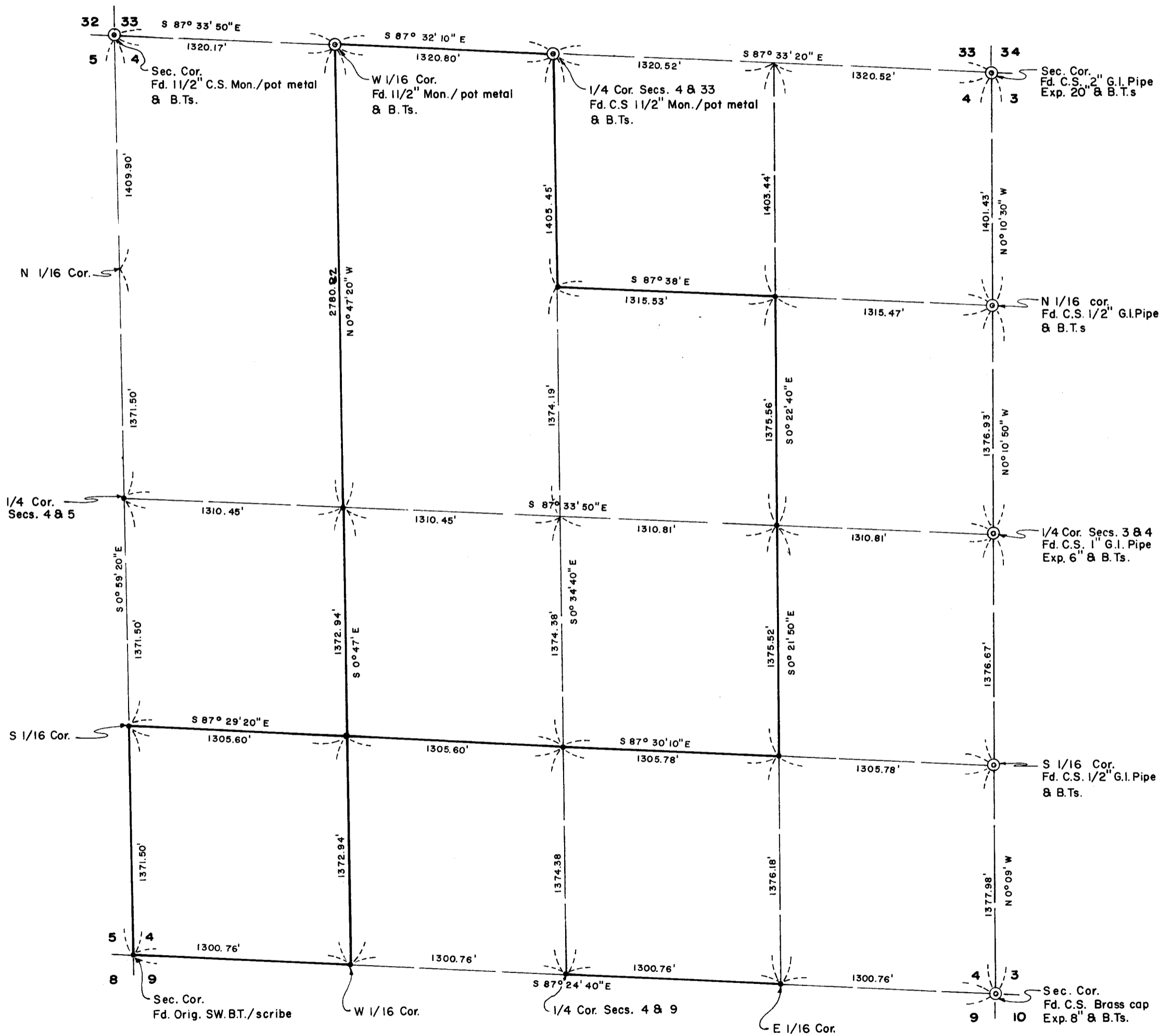
LOCATED IN SEC 4, T 33 S. R. 2 E., WM.  
BY: MARK E BOYDEN  
DEC. 28, 1973

REGISTERED  
**PROFESSIONAL  
LAND SURVEYOR**  
*Mark E. Boyden*  
OREGON  
NOV 9, 1951  
MARK E. BOYDEN  
281



**LEGEND**  
BASIS OF BEARINGS  
MEAN OF 8 SOLAR OBSNS. TAKEN NEAR SW. COR. SEC. 4  
⊙ FOUND CORNER MONUMENT SET AND REFERENCED BY THE COUNTY SURVEYOR  
● SET 1" x 28" GALV. PIPE WITH 1/2" EXPANDER FILLED WITH POT METAL

SCALE 1" = 600'



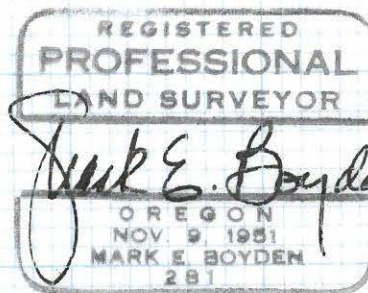
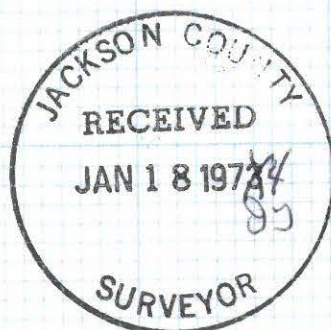
5523

5523

Scribed an 11" Black Oak, "CS 1/16 S4-BT" which bears South 68° East,  
0.9 feet to the face of the lower blaze;

Scribed a 12" Black Oak "CS 1/16 S4-BT" which bears South 46° West,  
11.3 feet to the face of the lower blaze.

December 28, 1973



CLEARPRINT

5523

Scribed a 5" Cedar, "NE 1/16 S4-BT" which bears South 53° 30' East,  
48.9 feet to the face of the lower blaze;

Scribed a 13" Fir, "NE 1/16 S4-BT" which bears South 17° 28' West,  
43.3 feet to the face of the lower blaze.

At the Center-East 1/16 corner, set a 1" x 28" galvanized iron  
pipe with a 1 1/2" expander filled with pot metal stamped:

T33SR2E  
CE 1/16  
Sec. 4  
1973 , exposed 10",

from which:

Scribed an 18" Fir, "CE 1/16 S4-BT" which bears North 82° 55' East,  
18.5 feet to the face of the lower blaze;

Scribed a 19" Fir, "CE 1/16 S4-BT" which bears South 6° 53' East,  
34.4 feet to the face of the lower blaze.

At the Southeast 1/16 corner, set a 1" x 28" galvanized iron pipe  
with a 1 1/2" expander filled with pot metal stamped:

T33SR2E  
SE 1/16  
Sec. 4  
1973 , exposed 10",

from which:

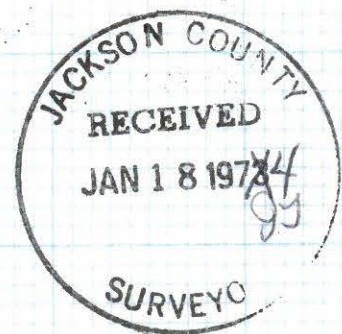
Scribed a 7" Cedar, "SE 1/16 S4-BT" which bears South 2° 36' West,  
37.5 feet to the face of the lower blaze;

Scribed a 12" Cedar, "SE 1/16 S4-BT" which bears North 73° 55' East,  
21.4 feet to the face of the lower blaze.

At the Center-South 1/16 corner, set a 1" x 28" galvanized iron pipe  
with a 1 1/2" expander filled with pot metal stamped:

T33SR2E  
CS 1/16  
Sec. 4  
1973 , exposed 10"

from which:



5523

Scribed a 6" Cedar, "SW 1/16 S4-BT" which bears South 67° East,  
16.4 feet to the face of the lower blaze;

Scribed a 12" Cedar "SW 1/16 S4-BT" which bears North 43° East,  
15.5 feet to the face of the lower blaze.

At the Center-West 1/16 corner, set a 1" x 28" galvanized iron  
pipe with a 1 1/2" expander filled with pot metal stamped:

T33SR2E

CW 1/16

Sec. 4

1973 , exposed 10"

from which:

Scribed a 12" Fir, "CW 1/16 S4-BT" which bears North 51° West,  
11.0 feet to the face of the lower blaze;

Scribed a 13" Fir, "CW 1/16 S4-BT" which bears South 35° West,  
15.8 feet to the face of the lower blaze.

At the Center-North 1/16 corner, set a 1" x 28" galvanized iron  
pipe with a 1 1/2" expander filled with pot metal stamped:

T33SR2E

CN 1/16

Sec. 4

1973 , flush with the road surface for corner,

from which:

Scribed a 10" Fir, "CN 1/16 S4-BT" which bears North 51° 50' West,  
28.4 feet to the face of the lower blaze;

Scribed an 8" Fir, "CN 1/16 S4-BT", which bears North 35° 58' East,  
45.2 feet to the face of the lower blaze.

At the Northeast 1/16 corner, set a 1" x 28" galvanized iron pipe  
with a 1 1/2" expander filled with pot metal stamped:

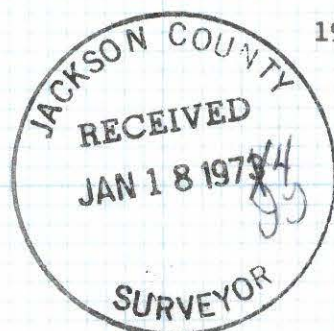
T33SR2E

NE 1/16

Sec. 4

1973 , exposed 10",

from which:



5523

Scribed a 10" Black Oak, "S 1/16 S5-BT" which bears North 56° 52' West, 43.8 feet to the face of the lower blaze;

Scribed a 9" Cedar, "S 1/16 S4-BT" which bears North 6° 44' East, 5.15 feet to the face of the lower blaze.

At the West 1/16 corner common to Sections 4 & 9, set a 1" x 28" galvanized iron pipe with a 1 1/2" expander filled with pot metal stamped:

T33SR2E

W  $\frac{4}{9}$  1/16  
1973 , exposed 10",

from which:

Scribed an 8" Black Oak "W 1/16 S4-BT" which bears North 81° East, 13.8 feet to the face of the lower blaze;

Scribed an 11" Black Oak, "W 1/16 S9-BT" which bears South 45° West, 3.8 feet to the face of the lower blaze.

At the East 1/16 corner common to Sections 4 and 9, set a 1" x 28" galvanized iron pipe with a 1 1/2" expander filled with pot metal stamped:

T33SR2E

E  $\frac{4}{9}$  1/16  
1973 , exposed 9",

from which:

Scribed a 17" Black Oak, "E 1/16 S9-BT" which bears South 78° 18' West, 21.7 feet to the face of the lower blaze;

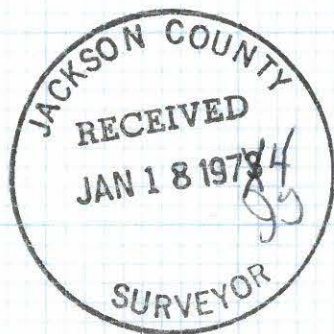
Scribed a 6" Fir, "E 1/16 S4-BT" which bears North 31° 07' West, 13.7 feet to the face of the lower blaze.

At the Southwest 1/16 corner, set a 1" x 28" galvanized iron pipe with a 1 1/2" expander filled with pot metal stamped:

T33SR2E

SW SEC.  
1/16 4  
1973 , exposed 10",

from which:



Scribed an 11" Fir, "S9-BT" which bears South  $62\ 1/2^\circ$  East,  
19.9 feet to the face of the lower blaze;

Scribed a 7" Black Oak, "S8-BT" which bears South  $23^\circ$  West,  
12.0 feet to the face of the lower blaze;

Scribed a 13" Fir, "S5-BT" which bears North  $43\ 3/4^\circ$  West,  
27.4 feet to the face of the lower blaze.

At the Quarter corner common to Sections 4 & 5, set a  
1" x 28" galvanized iron pipe with a 1 1/2" expander filled with pot metal  
stamped:

T33SR2E

1/4  $\frac{5}{4}$  cor.

1973 , exposed 10"

from which:

Scribed an 8" Black Oak, "1/4S-BT" which bears South  $18^\circ\ 40'$  East,  
18.7 feet to the face of the lower blaze;

Scribed a 12" White Oak, "1/4S-BT" which bears North  $59^\circ\ 40'$  West,  
61.8 feet to the face of the lower blaze.

At the Quarter corner common to Sections 4 and 9, set a 1" x 28"  
galvanized iron pipe with a 1 1/2" expander filled with pot metal stamped:

T33SR2E

1/4  $\frac{4}{9}$  cor

1973 , exposed 10"

from which:

Scribed a 6" White Oak, "1/4S-BT" which bears North  $78^\circ\ 45'$  East,  
16.3 feet to the face of the lower blaze;

Scribed an 8" Fir, "1/4S-BT" which bears South  $23^\circ\ 25'$  East,  
15.7 feet to the face of the lower blaze.

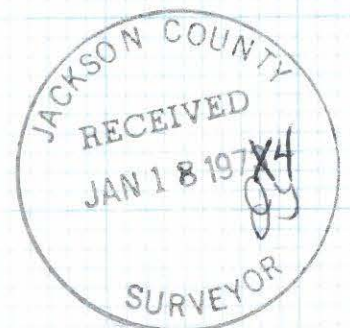
At the South 1/16 corner common to Sections 4 and 5, set a 1" x 28"  
galvanized iron pipe with a 1 1/2" expander filled with pot metal stamped:

T33SR2E

S  $\frac{5}{4}$  1/16

1973 , exposed 7"

from which:



Survey No. 5523

## SURVEY NARRATIVE TO COMPLY WITH O.R.S. 209.250

FOR: Boise Cascade Corporation  
North Pacific Highway  
Medford, Oregon

PURPOSE: To subdivide Section 4, T33SR2E, W.M. and monument and reference the newly established corners as shown on the annexed map.

PROCEDURE: Utilizing a one-second theodolite, an electronic measuring instrument and chain, traversed the Section in four main closed loops, tying in the corners previously established by the County Surveyor, and to traverse points previously set by Boise Cascade survey crews. This data was then computed, and an extensive search was made for the West and South Quarter corners of Section 4. No positive evidence could be found of these two Quarter corners, and said corners were positioned by single proportionate measurement.

The remaining one-sixteenth corner positions were then computed and then monumented and referenced.

At the corner common to Sections 4, 5, 8 & 9, set a 1" x 28" galvanized iron pipe with a 1 1/2" expander filled with pot metal stamped:

T33SR2E

$$\begin{array}{c|c} 5 & 4 \\ \hline 8 & 9 \end{array}$$

1973 , exposed 10",

from which:

The original bearing tree (now a 30" Sugar Pine stump) with 'BT' scribe visible bears South 49° West, 22.4 feet to the face of the lower blaze;

Scribed a 7" Fir, "S4-BT" which bears North 72 1/2° East, 25.0 feet to the face of the lower blaze;

