

5520

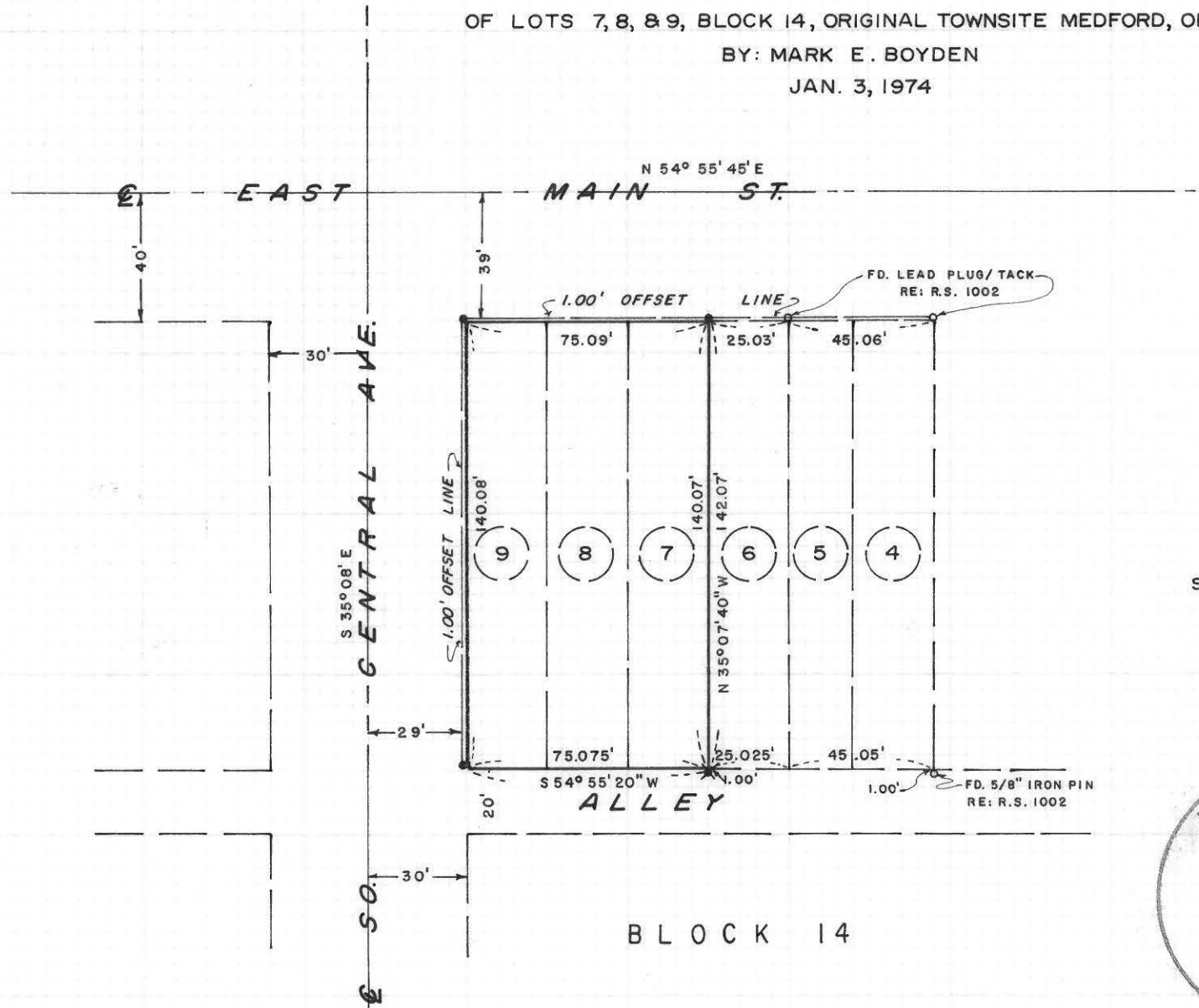
SURVEY FOR:

FAR WEST FEDERAL SAVINGS

OF LOTS 7, 8, & 9, BLOCK 14, ORIGINAL TOWNSITE MEDFORD, OREGON

BY: MARK E. BOYDEN

JAN. 3, 1974

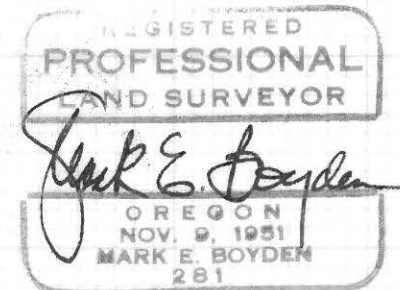
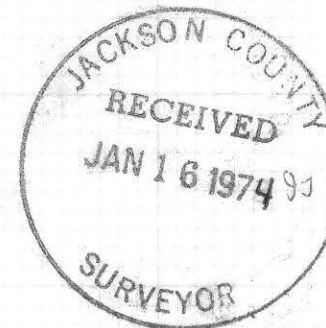


SCALE 1" = 50'

BASIS OF BEARINGS

S 35° 08' E = C S. P.R.R. at MAIN STREET

- FOUND MONUMENT AS INDICATED
- SET LEAD PLUG WITH TACK IN CONC. WALK
- ✕ SET 3/4" x 24" IRON PIN FLUSH



5520

SURVEY NARRATIVE TO COMPLY WITH O.R.S. 209.250

FOR: Far West Federal Savings
444 S. W. Fifth Avenue
Portland, Oregon, 97204

PURPOSE: To determine the boundary corner positions of Lots 7, 8 & 9,
Block 14 of the original townsite of Medford, Oregon.

PROCEDURE: Found witness corners set on Recorded Survey No. 1002 as
shown, for primary control. Also tied in the lead plug
witness corner set at the Northeast corner of East Main
and Front Streets and the lead plug witness corner set
at the Northeast corner of North Central Avenue and East
Sixth Streets as additional street location controls.

From said data, set witness corners to control the true
corner positions as shown on the annexed map.

January 3, 1974

