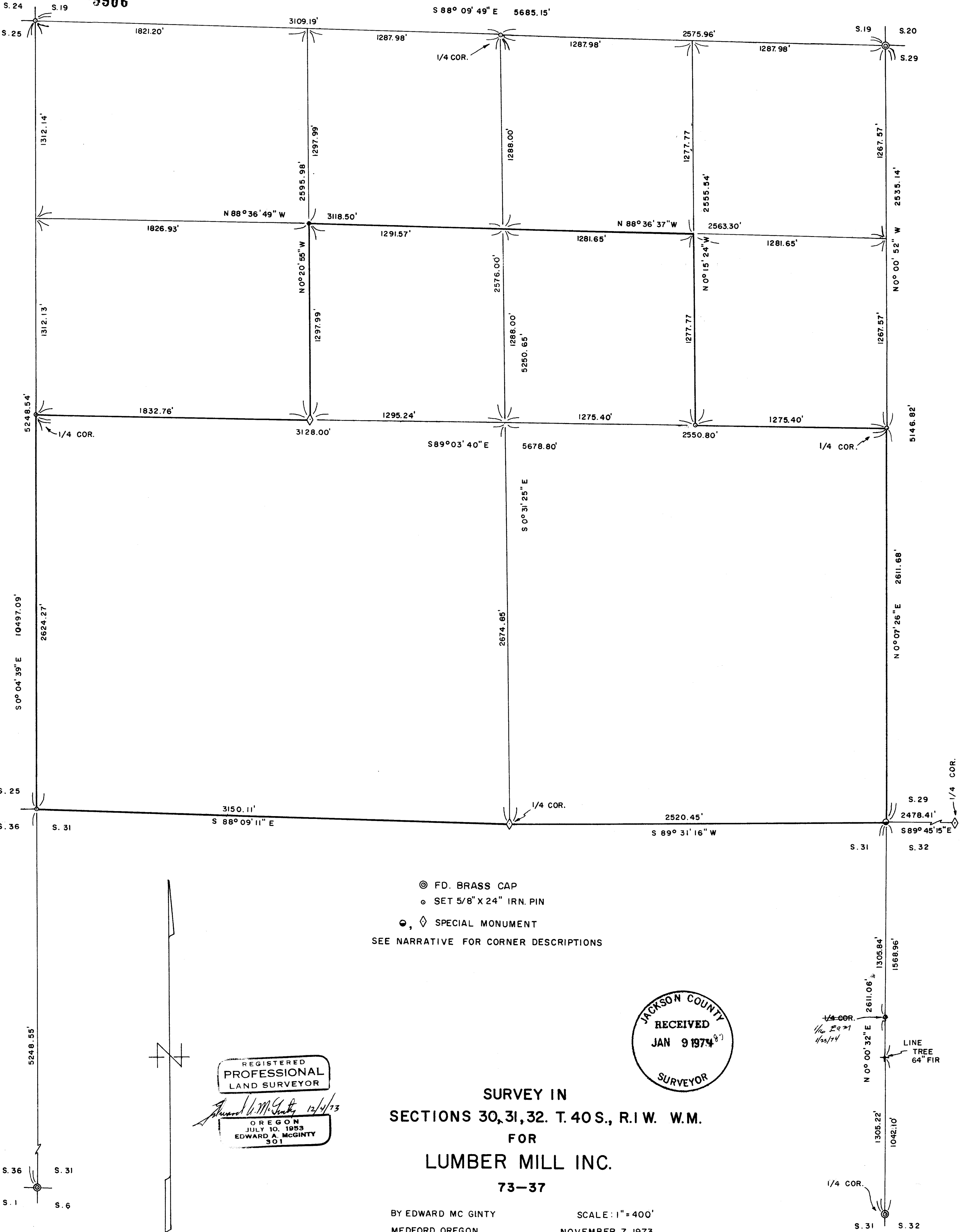
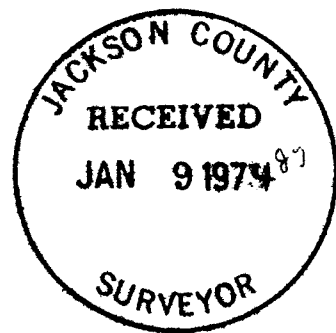


5506



© FD. BRASS CAP
 ○ SET 5/8" X 24" IRN. PIN
 ●, ◆ SPECIAL MONUMENT
 SEE NARRATIVE FOR CORNER DESCRIPTIONS



REGISTERED
 PROFESSIONAL
 LAND SURVEYOR

Edward A. McGinty 12/4/73
 OREGON
 JULY 10, 1953
 EDWARD A. MCGINTY
 301

SURVEY IN
 SECTIONS 30, 31, 32. T. 40 S., R. 1 W. W.M.
 FOR
 LUMBER MILL INC.

73-37

BY EDWARD MC GINTY
 MEDFORD, OREGON

SCALE: 1" = 400'
 NOVEMBER 7, 1973

5506

5506

SURVEY NARRATIVE TO COMPLY WITH O.R.S. 209-250

Date: January 25, 1974

FOR: Edward A. McGinty, R.S.
205 West Ninth
Medford, Oregon

PURPOSE: To amend Survey No. 5506

PROCEDURE: The North 1/16 corner between Sections 31 and 32 was marked 1/4 corner on the tracing being a drafting error.

Reference: Fir, 4 in. diam., bears N.27°38'E. 11.90 feet.
Fir, 5 in. diam., bears S.65°10'W. 12.2 feet.



Lumber Mill Corp.
Page 2

SW Corner of Section 30, set a cap and 5/8" x 24" iron pin in stone mound 18" high, at proportional distance, from which:

- A fir, 14" in diam., bears N.66°33'W. 60.30 ft. scribed 301 BT.
- A fir, 6" in diam., bears N.82°15'E. 47.00 ft. scribed 301 BT.
- A fir, 8" in diam., bears S.47°41'E. 69.3 ft. scribed 301 BT.
- A 'X' on rock out S.0°55'E. 6.22 ft.

This corner had been searched for several times in the past, once by Jack Crump, U.S.F.S. who set a rock mound at an approx. location. He found no evidence of original bearing tree, or original post.

P.P. W. 1/4 of Section 30, set a 5/8" x 24" iron pin with cap, 20" in ground from which:

- A fir, 40" in diam., bears S.42°51'W. 43.8 ft. marked with 301 BT.
- A fir, 8" in diam., bears S.12°52'E. 56.35 ft. marked with 301 BT.
- A 5/8" x 24" iron pin bears S.2°18'W. 29.79 ft.

1/4 Corner between Section 19/30, set a 5/8" x 24" iron pin with 1 1/2" cap at a proportional distance which varies from the corner reported by Jack Crump, U.S.F.S., who reported to find a possible bearing tree. This location was reviewed as well as the tree, finding no evidence of scribing and a conflict in the tree reported. Also, about the same report was made by the Forestry Elk Lumber (Now Boise Cascade) but search revealed no evidence of corner. Reference from proportional 1/4 corner:

- A fir, 14" in diam., bears N.72°43'W. 18.06 ft. scribe 301 BT.
- A fir, 9" in diam., bears S.27°40'W. 10.20 ft. scribe 301 BT.

Corner of Section 29, 30, 31, 32 set 1" x 36" iron pipe 20" in ground in a rock mound set at a single proportional distance from line tree southerly and 1/4 corner between Section 29/30 and on a line extended northerly from the 1/4 corner between Sections 31/32 to line tree, northerly to said set 1" x 36" iron pipe from which:

- A fir, 9" in diam., bears N.70°46'W. 67.00 ft. marked with two blazes.
- A traverse point, 5/8" x 24" iron pin bears N.86°23'27"W. 102.89 ft.
- A traverse point, 1/2" x 12" iron pin bears N.89°31'17"W. 367.48 ft.

This corner falls in marshy area near scattered rocks. It fits reasonable calls to creek calls to the East and South.

West Center 1/16 of Section 30, stone in place 8" x 8" x ? approx. 3" deep marked 'X' from which:

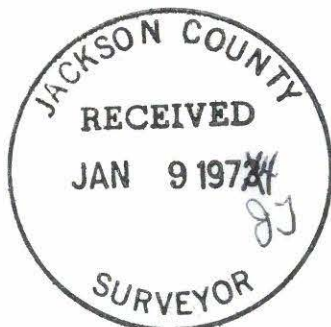
- Cap on 5/8" iron pin bears S.89°03'40"W. 0.46 feet.
- Iron pin, 1/2" in diam., bears N.89°03'40"W. 0.46 feet.
- A fir, 16" in diam., bears N.18°34'E. 59.5 ft. marked with two blazes.
- A fir, 18" in diam., bears N.83°30'W. 69.6 ft. marked with two blazes.

NW 1/16 Corner of Section 30, set 1/2" x 12" iron pin from which:

- A fir, 12" in diam., bears S.7°25'W. 30.8 ft. marked with two blazes.
- A fir, 10" in diam., bears N.26°02'E. 14.7 ft. marked with two blazes.

East Center 1/16 of Section 30, set 5/8" x 24" iron pin 3" high in mound of stone from which:

- A fir, 6" in diam., bears S.89°38'E. 41.7 ft marked with two blazes.
- A fir, 6" in diam., bears N.60°44'W. 16.9 ft. marked with two blazes.



Edward A. McGinty 12/4/73
OREGON
JULY 10, 1953
EDWARD A. MCGINTY
301

SURVEY NARRATIVE TO COMPLY WITH O.R.S. 209-250

SURVEY FOR: Lumber Mills Corp.
c/o Stewart Foster
39 S. Central
Medford, Oregon 97501

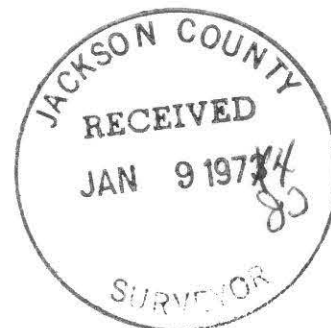
SURVEY BY: Edward A. McGinty, R.S.
Medford, Oregon
December 1973

LOCATION: Sec. 30, 31, 32, T40S, R1W, WM.

BASIS OF BEARING: Solar Observation

PRECEDENCE OF SURVEY:

73-37



NW Corner of Section 30, found a post in a rock mound and set a 5/8" x 24" iron pin from which:

Original Bearing Tree, a fir, 14" in diam., dead snag bears S.80°E. 5.28 ft. to face visible scribe.

Original Bearing Tree, a fir, now a stump and snag adjacent with scribe, bears S.58°20'W. 14.5 ft. instead of S.60°W. 13.86 ft.

Also found remains of NE and scribe.

Corner of Sections 19, 20, 29, 30 found a brass cap and pipe set by the County Surveyor in 1962. Also, bearing trees original, and set by County Surveyor, found to be in reasonable agreement with records.

1/4 Corner Sec.s 30/29, found a stone and rock mound, set 5/8" x 24" iron pin in place from which:

Remains of Original Bearing Tree, badly deteriorated, bears East 3.30 feet to face.

Also possible indications of remains of tree to SW.

New references, a fir, 10" in diam., bears N.5°18'W. 30.9 ft. marked with two blazes.

Also, a fir, 14" in diam., bears S.48°08'W. 25.4 ft. marked with two blazes.

1/4 Corner Secs. ³⁰/₃₁, Found a stone 8" x 6" x ?, 10" high in place marked 1/4 on North face, from which:

Original Bearing Tree, a fir, 30" in diam., bears N.43°29'E. 11.88 ft. to face of scribe instead of N.37°E.

Center of stump remains of Original Bearing Tree, SW 22 ft.

New reference, a fir, 20" in diam., bears S.9°35'W. 35.2 ft. with two blazes.

1/4 Corner Secs. ²⁹/₃₂ found 1/4 corner stone in place with 1/4 on North face from which:

Original Bearing Tree, a pine, bears N.12°00'W. 69.2 feet.

Original Bearing Tree, a pine, bears S.0°16'E. 19.9 feet.

1/4 Corner 31/32, found standard bronze disc on 2" pipe set by BLM.

SW Corner of Section 31, found standard bronze disc on 2" pipe set in official resurvey (BLM), in rock mound. Also found trees referred to as Larch being more commonly known as Shasta Fir. Also found Bearing Tree in generally poor condition. From said bronze disc which:

A fir, 40" in diam., bears N.36°45'E. 40.9 ft.

A stump remains bears S.31°40'E.

A fir, 24" in diam., bears S.73°30'W. 23.3 ft.

New reference, a fir, 14" in diam., bears N.32°51'W. 66.8 ft. marked with two blazes.

Also, a fir, 22" in diam., bears S.9°27'E. 50.2 ft. marked with two blazes.