

T40S R1E

T41S R1E

6 U.S.A.

5 U.S.A.

7 U.S.A.

8

CASWELL, E.B. et al
Deed Ref: 518-146

9 U.S.A.

10 U.S.A.

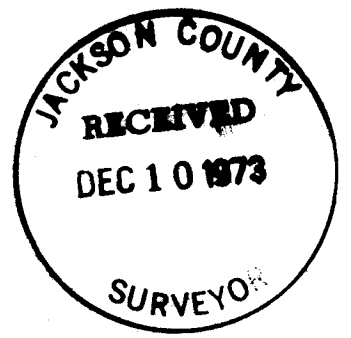
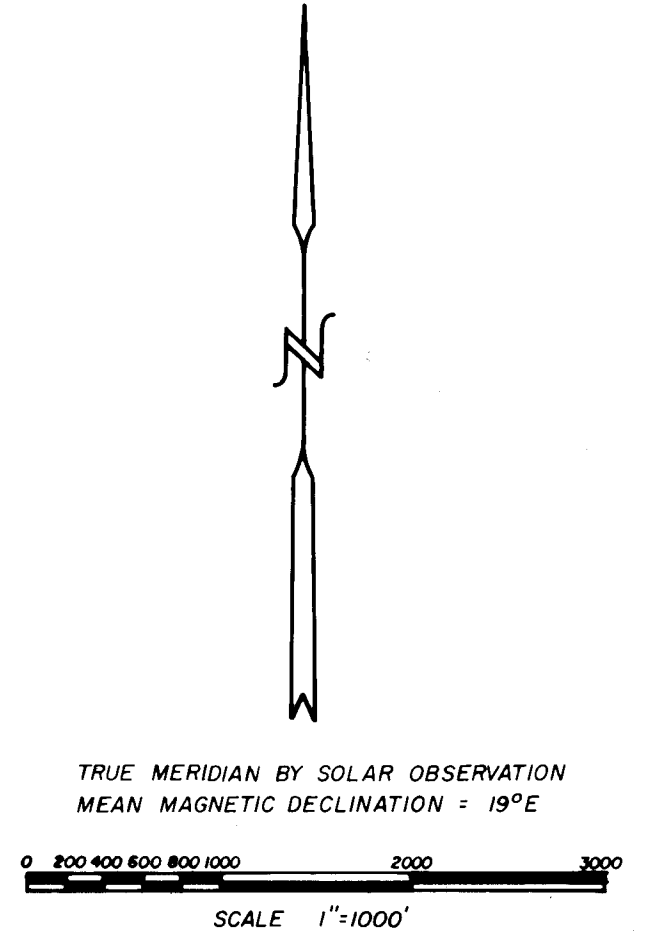
16 U.S.A.

15 U.S.A.

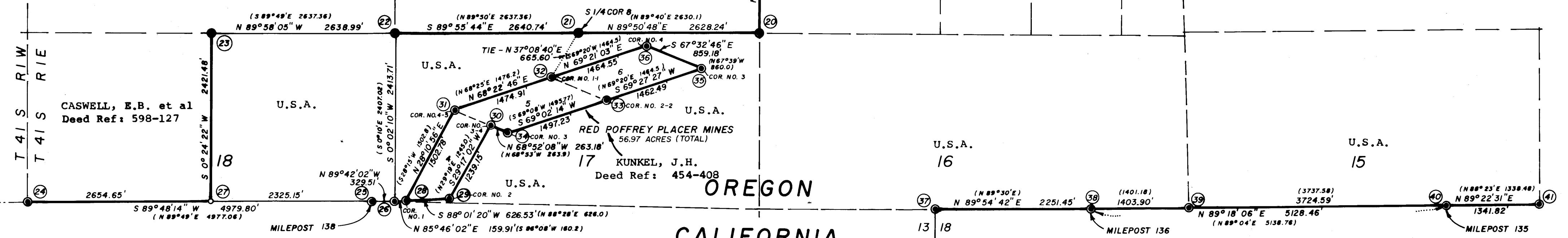
OREGON
CALIFORNIA

LEGEND

- -INDICATES ORIGINAL GOVERNMENT CORNERS.
[REFER TO NUMBERED NOTE FOR CORNER DESCRIPTION].
 - -INDICATES CORNERS SET BY THIS SURVEY.
[REFER TO NUMBERED NOTE FOR DESCRIPTION].
 - INDICATES FINAL BOUNDARY LINES POSTED
AND BLAZED ON THIS SURVEY.
- ALL MEASUREMENTS EXPRESSED IN FEET AND
DECIMALS THEREOF.
- FIGURES ENCLOSED IN PARENTHESIS
[N 89° 50' E 5280'] REFER TO ORIGINAL
GOVERNMENT RECORD BEARINGS AND DISTANCES.
- DEED REFERENCES REFER TO THE BOOK AND PAGE
NUMBER OF DEED RECORDS OF JACKSON COUNTY,
OREGON.



DEPENDENT RESURVEY
OF
PORTIONS OF TWP 41 S RGE 1 E
WILLAMETTE BASE & MERIDIAN
AT THE REQUEST OF THE
UNITED STATES OF AMERICA
DEPARTMENT OF AGRICULTURE
UNITED STATES FOREST SERVICE
KLAMATH NATIONAL FOREST
YREKA, CALIFORNIA



REGISTERED
PROFESSIONAL
LAND SURVEYOR

Richard B Davis

OREGON
JANUARY 5, 1968
RICHARD B. DAVIS
827

- [1] an 11" fir tree, N 1° W 6.5 feet, with scribing visible in a partly healed blaze
- [2] a 7" fir tree, N 23° E 24.5 feet, with scribing visible in a partly healed blaze [record = N 17½° E] [FB 113-21]

CERTIFICATE

I hereby certify that the above field notes and the accompanying plat represent an actual and correct survey made by me or under my direction in June through October, 1973.

Richard B. Davis

RICHARD B. DAVIS
Professional Land Surveyor
No. 827
State of Oregon

REGISTERED
PROFESSIONAL
LAND SURVEYOR

Richard B. Davis

OREGON
JANUARY 5, 1953
RICHARD B. DAVIS
827

California-Oregon border, monumented with a properly marked General Land Office brass capped iron post dated 1916 and 1963, from which bears:

- [1] an 11" pine tree, N 27° E 13.1 feet, with scribing visible in an open blaze
- [2] a 9" pine tree, S 15° E 23.3 feet, with scribing visible in an open blaze
- [3] an 8" pine tree, S 39¼° W 32.0 feet, with scribing visible in an open blaze

The above trees marked by the Bureau of Land Management in 1963. [FB 113-17 & FB 121-4]

[38] The 136 mile corner on the California-Oregon state boundary, monumented with a properly marked General Land Office brass capped iron post dated 1916 and 1963, from which the original bearing trees:

- [1] a 20" fir tree, N 9° E 68.6 feet with healed blaze
- [2] a 26" pine tree, S 30° E 67.3 feet with healed blaze
- [3] a 30" fir tree, S 27° W 56.8 feet with healed blaze
- [4] a 34" fir tree, N 68° W 77.9 feet with healed blaze [FB 113-23]

[39] The closing corner of sections 15 and 16 on the California-Oregon state boundary, monumented by a properly marked General Land Office brass capped iron post, dated 1916 and 1963, from which bears:

- [1] an 8" pine tree, N 32° E 33.5 feet, with partly covered scribes [record = N 35° E]
- [2] an 18" pine tree, N 67° W 58.3 feet, with partly covered scribes. [FB 113-23]

[40] The 135 mile corner on the California-Oregon state line, monumented by a properly marked General Land Office brass capped iron post dated 1916 and 1963, falls in an area of sparse timber. No bearing trees available.

[41] The closing corner of sections 14 and 15 on the California-Oregon state line monumented with a properly marked General Land Office brass capped iron post dated 1916 and 1963, from which the bearing trees:

[1] a 13" fir tree, N 8° W 17.6 feet, marked "RP No. 6-2
RP No. 5-2-818 BT"

[2] a 9" fir tree, S 28° W 21.2 feet, marked "RP No. 5-2
RP No. 6-2-818 BT". [FB 112A-21]

[34] Corner No. 3 of Red Poffrey Placer No. 5, re-established by reference to the remaining bearing tree in the southwest quadrant. The original stone marking this corner was found but had been moved. Replacing the corner solely by reference to the southwest bearing tree resulted in a corner position that would neither agree with the direction of the blaze on the bearing tree nor with the bearings and distances to the adjacent corners on Red Poffrey Placer No. 5. In attempting to arrive at a corner position based on proportionate adjustment between adjacent corners, it was found that the corner point so established agreed with old blazed lines coming into and out of this corner, and that the original bearing tree was situated S 80°41' W 22.3 feet [record= S 8°41' W 22.3'] from the corner position. A root depression was found N 69°29' W 28.2 feet at the location of the other original B.T.. At the corner position I placed a properly marked brass capped iron post 20" in the ground and marked the following tree:

[1] a 7" fir tree, N 67° E 20.4 feet, marked "RP No. 5-3
-818 BT" [FB 112A-20]

[35] Corner No. 3 of Red Poffrey Placer No. 6, monumented by a 8"x 12" x 25" granite stone, firmly set and marked "RP No. 6-3-818, from which the original bearing trees:

[1] a 23" pine tree, S 55° W 55.6 feet, with scribing visible in a partly healed blaze

[2] a 14" pine snag, N 51° E 10.9 feet, with scribing visible.

I mark the following new tree:

[1] an 8" pine tree, S 83° W 51.9 feet, marked "RP No. 6-3
-818 BT". [FB 112A-21]

[36] Corner No. 4 of Red Poffrey Placer Claim No. 6, monumented by a firmly set 12"x 15"x 24" granite stone marked "RP No. 6-4-818, from which the original bearing trees:

[1] a 27" fir tree, N 35¼° W 6.4 feet, with healed blaze

[2] a 12" fir tree, S 74¼° W 8.2 feet, with healed blaze
[FB 112A-21]

[37] The closing corner of section 13, Township 48 North, Range 8 West, Mount Diablo Base and Meridian, and section 18, Township 48 North, Range 7 West, Mount Diablo Base and Meridian on the

[30] Corner No. 3 of Red Poffrey Placer No. 4 and Corner No. 4 of Red Poffrey Placer No. 5, monumented by a firmly set 10"x 12" stone 10" above ground, marked "RP No. 4-3 RP No. 5-4-818". There were no original bearing trees for this corner. I marked the following trees:

[1] a 13" fir tree, S 72° W 17.4 feet, marked "RP No. 4-3 RP No. 5-4-818 BT"

[2] a 14" fir tree, S 33½° E 24.5 feet, marked "RP No. 4-3 RP No. 5-4-818 BT" [FB 112A-20]

[31] Corner No. 4 of Red Poffrey Placer No. 4 and Corner No. 5 of Red Poffrey Placer No. 5, monumented by a firmly set 9"x 10"x 24" granite stone marked "RP No. 4-4 RP No. 5-5-818" from which the original bearing tree:

[1] a 24" uprooted cedar, N 62° E 43.0'± feet [record = N 71°20'E 43.3']. The bearing tree called for in the southeast quadrant falls in a roadway.

I mark the following new trees:

[1] a 12" fir tree, S 16° W 21.2 feet, marked "RP No. 4-4 RP No. 5-5-818 BT"

[2] a 12" fir tree, N 31° W 12.0 feet, marked "RP No. 4-4 RP No. 5-5-818 BT". [FB 112A-22]

[32] Corner No. 1 of Red Poffrey Placer No. 5 and Corner No. 1 of Red Poffrey Placer No. 6, monumented by a 9"x 14"x 29" granite stone, firmly set, and marked "RP No. 5-1 RP No. 6-1-818" from which the remaining original bearing tree:

[1] a 22" fir tree, S 17½° W 12.8 feet, with healed blaze.

I mark one new tree:

[1] a 14" cedar, N 61° W 34.8 feet, marked "RP No. 5-1 RP No. 6-1-818 BT" [FB 112A-21]

[33] Corner No. 2 of Red Poffrey Placer No. 5 and Corner No. 2 of Red Poffrey No. 6, monumented by a loosely set 12"x 15"x 25" granite stone marked RP No. 5-2 RP No. 6-2-818, from which the original bearing tree:

[1] a down and rotting 24" fir, N 20° W 65.4 feet, with scribing visible.

I replaced the stone with a properly marked brass capped iron post and marked the following new trees:

[2] a 10" pine tree, N 54° E 15.2 feet [New BLM B.T.]

[3] a 7" pine tree, N 38° W 10.6 feet [New BLM B.T.]

[27] At the proportionate position between the southwest and southeast corners of section 18, and on line between the southwest corner of section 18 and milepost 138 on the California-Oregon boundary line I set a properly marked brass capped iron post and marked the following trees:

[1] a 12" fir tree, N 44° E 14.0 feet, marked "¼ S 18 BT"

[2] a 17" fir tree, N 14° W 16.5 feet, marked "¼ S 18 BT"
[FB 112A-23]

[28] Original corner. Corner No. 1 of Red Poffrey Placer No. 4, monumented by a 7"x 11"x 24" granite stone marked "RP No. 4-1-818", firmly set, from which the original bearing object:

[1] The southwest corner of section 17, Township 41 South, Range 1 East, Willamette Meridian, bears S 85°46'02" W 159.91 feet [record = S 86°08' W 160.2 feet]

No evidence was found of the only bearing tree marked on the original survey [fir, 18" diameter, S 32° W 46.5 feet]

and new bearing trees:

[1] a 10" fir tree, S 80° W 13.7 feet, marked "RP No. 4-1-818 BT"

[2] an 8" pine tree, N 83° E 9.7 feet, marked "RP No. 4-1-818 BT"

[29] Corner No. 2 of Red Poffrey Placer No. 4, determined at record distance from the original bearing trees:

[1] remains of a 12" fir tree, N 22° E 18.7 feet, marked "RP No. 4-2-818 BT"

[2] a 14" fir tree, N 55° E 25.0 feet, with scribing covered by a fallen tree

At the corner point, I set a properly marked brass capped iron post 20" in the ground from which the new bearing tree:

[1] a 14" cedar tree, S 6° W 12.7 feet, marked "RP No. 4-2-818 BT" [FB 112A-20]

- [23] Original corner. At the one-quarter corner point I found a properly marked General Land Office brass capped iron post dated 1916, from which bears:
- [1] a 34" pine stump, N 58° E 10.2 feet, with no marks visible [original B.T.- record = N 58° E 9.9']
 - [2] an 18" down cedar tree, S 29° W 11.9 feet, with no marks visible [original B.T.- record = S 29° W 11.9']
 - [3] a 6" pine tree, N 24° E 42.4 feet, marked "¼ S 7 BT" [New B.T.]
 - [4] a 17" pine tree, S 43° E 62.8 feet, marked "¼ S 18 BT" [New B.T.] [FB 112-11] [112A-23]

- [24] Original corner. At the closing corner of section 13, Township 41 South, Range 1 West, and section 18, Township 41 South, Range 1 East, Willamette Meridian, I found a properly marked General Land Office brass capped iron post dated 1916 and 1963, from which bears:

- [1] a 27" fir stump, N 15° E 34.0 feet, with no marks visible [original B.T.- record = N 15¼° E 31.0']
- [2] a 6" fir tree, N 73° E 32.4 feet [New BLM B.T.]
- [3] a 6" fir tree, N 72° W 47.0 feet [New BLM B.T.] [FB 112-14]

- [25] Original corner. Found a 3" diameter General Land Office brass capped pipe dated 1916 and set as a reference monument 5.3 feet west of the original 138 mile corner tree, from which bears:

- [1] a 30" sugar pine tree, N 60° W 69.3 feet, with healed blaze. [original B.T.- record = N 60° W 69.3']
- [2] an 8" fir tree, N 59° W 7.9 feet [New BLM B.T.]
- [3] a 7" fir tree, S 33° E 30.4 feet [New BLM B.T.]

This corner was perpetuated by the Bureau of Land Management in 1963.

- [26] Original corner. At the corner point I found a properly marked General Land Office brass capped iron post dated 1916 and 1963, from which bears:

- [1] a 40" fir stump, N 67° W 35.0 feet, with scribing visible in an open blaze [original B.T.- record = N 67¼ W 35.0']

- [3] a 7" fir tree, N 45° E 24.4 feet [New BLM B.T.]
- [4] a 10" fir tree, S 21° E 14.5 feet, [New BLM B.T.]
- [5] an 8" fir tree, S 67° W 24.4 feet [New BLM B.T.]
- [6] a 10" fir tree, N 58° W 18.5 feet [New BLM B.T.]
[FB 113-6]

[21] Original corner. The one-quarter corner position is monumented by a 30" diameter fir stump with scribing visible on the north face, from which bears:

- [1] a 2½" diameter Bureau of Land Management brass capped iron post dated 1963 and properly marked for a reference monument bears east 2.0 feet
- [2] an 18" fir snag, N 67° E 19.1 feet, with scribing visible [original B.T.- record = N 67° E 19.1']
- [3] an 8" pine tree, N 19° W 29.0 feet [New BLM B.T.]
- [4] an 11" pine tree, S 26½° W 36.3 feet [New BLM B.T.]
[FB 113-3]

[22] Original corner. The corner of sections 7, 8, 17 and 18 is monumented with a properly marked General Land Office brass capped iron post dated 1916 and 1963, from which bears:

- [1] a 30" rotted pine stump, N 58° E 25.7 feet with no marks visible [original B.T.- record = N 58° E 25.7']
- [2] remains of a fir tree, with no marks visible, S 17° E 13.2 feet [original B.T.- record = S 17½° E 13.2']
- [3] a 38" sugar pine tree, S 82° W 10.6 feet, with healed blaze [original B.T. - record = S 82° W 10.6']
- [4] a 40" sugar pine tree, N 59° W 49.5 feet, with healed blaze [original B.T.- record = N 59° W 49.5']
- [5] a 14" fir tree, N 36° E 54.1 feet [New BLM B.T.]
- [6] a 12" pine tree, S 80° E 32.3 feet [New BLM B.T.]
- [7] an 8" fir tree, S 19° W 37.3 feet [New BLM B.T.]
- [8] an 8" fir tree, N 8° E 40.9 feet [New BLM B.T.] [Record = N8°W]
[FB 113-2]
- [9] a 14" fir tree, N 2½° W 34.4 feet, marked "T41S R1E S7 BT" [New B.T.]

[2] a 21" fir tree, S 7° W 27.0 feet, marked "S 4 L 8 BT"
[FB 112A-16]

[17] Original corner. Found a 15"x 14"x 6" granite stone with $\frac{1}{4}$ on bottom face. Corner is on an extremely steep hillside, and stone had rolled downhill. I reset the corner by placing a properly marked brass capped iron post 20" in the ground at the corner point as determined by swinging distance arcs from the original bearing trees, from which bears:

[1] a 56" sugar pine tree, S 35° W 13.2 feet, with healed blaze [original B.T.- record = S 35° W 13.2']

[2] a 7" yew tree, S 80° E 17.8 feet, with scribing visible in a partly healed blaze [original B.T.- record = S 80° E 17.8'] [FB 112-16 and 112B-27]

[18] At the proportionate position for the north one-sixteenth corner between sections 9 and 10 I set a properly marked brass capped iron post 20" in the ground and marked the following trees:

[1] a 21" fir tree, N 19° E 68.4 feet, marked "N 1/16 S 10 BT"

[2] a 10" fir tree, S 42° W 16.8 feet, marked "N 1/16 S 9 BT". [FB 112B-27 and FB 121-5]

[19] Original corner. The corner consists of a 12" pine tree with unopened blazes on the east and west sides, from which bears:

[1] a 22" fir stump, N 54° E 19.1 feet, with healed blaze [original B.T.- record = N 54° E 19.1']

[2] an 18" sugar pine tree, S 86° W 16.5 feet, with healed blaze [original B.T.- record = S 86° W 16.5']

[3] a 7" fir tree, N 5° E 40.9 feet [New BLM B.T.]

[4] a 5" fir tree, S 13° W 35.6 feet [New BLM B.T.]

[5] a 2½" diameter Bureau of Land Management brass capped iron pipe, properly marked for a reference monument, bears S 45° W 6.9 feet, pipe is dated 1963. [FB 112-1]

[20] Original corner. The corner point is monumented by a properly marked General Land Office brass capped iron pipe dated 1916 and 1963, from which bears:

[1] a 26" fir stump, S 57° E 50.8 feet, with healed blaze [original B.T.- record = S 57° E 50.8']

[2] a 24" fir tree, S 23° W 45.5 feet, with healed blaze [original B.T.- record = S 23° W 45.5']

[12] At the proportionate position for the corner of lots 11 and 12 of section 4 and lots 1 and 2 of section 9 I set a properly marked brass capped iron post 20" in the ground, from which bears:

[1] a 16" fir tree, N 6° W 45.4 feet, marked "L 11 BT"

[2] a 20" fir tree, N 89° E 5.7 feet, marked "L 12 BT"
[FB 112A-17]

[13] Original corner. At the corner point I found a properly marked Bureau of Land Management brass capped iron post dated 1963, from which bears:

[1] an 8" fir tree, N 45° E 38.1 feet [New BLM B.T.]

[2] a 12" fir tree, S 3° E 16.7 feet [New BLM B.T.]

[3] an 11" fir tree, S 88° W 18.7 feet [New BLM B.T.]

[4] an 8" fir tree, N 50° W 9.3 feet [New BLM B.T.]

[5] a 20" fir snag, S 25° W 54.8 feet, with partial scribing visible [original B.T.- record = S 23° W 54.8']
[FB 112-3]

[14] Original corner. At the corner position I found a properly marked Bureau of Land Management brass capped iron post dated 1963, from which bears:

[1] a 41" pine stump, S 26° E 7.1 feet, marked "¼ S 4 BT"
[original B.T.- record = S 29° E 7.9']

[2] an 11" fir tree, S 32° W 28.2 feet, [New BLM B.T.]

[3] a 15" cedar tree, N 31° E 41.8 feet [New BLM B.T.]
[FB 112A-18]

[15] At the point of intersection of the quarter section lines I set a properly marked brass capped iron post 20" in the ground and marked the following trees:

[1] a 15" yellow pine tree, N 33° E 8.1 feet, marked "C ¼ S 4 BT"

[2] a 6" cedar tree, S 27° W 11.7 feet, marked "C ¼ S 4 BT"
[FB 112A-15]

[16] At the proportionate point for the corner of lots 5, 6, 7 and 8, I set a properly marked brass capped iron post 20" in the ground and marked the following trees:

[1] a 23" fir tree, N 44° E 16.8 feet, marked "S 4 L 6 BT"

[1] a 6" yellow pine tree, S 23° E 12.5 feet, marked "S 4 L1 BT"

[2] an 8" fir tree, S 54° W 12.2 feet, marked "S 4 L2 BT"
[FB 121-7]

[9] Did not find the corner stone as described in the original notes. I re-established the one-quarter corner position by swinging distance arcs from the original bearing trees, and at the point of intersection I set a properly marked brass capped iron post 20" in the ground, from which bears:

[1] an 18" pine tree, S 65° E 33.0 feet, with partly healed blaze [original B.T.- record = S 68° E 33.0']

[2] a 21" broken pine snag, S 42° W 23.8 feet, with old blaze [original B.T.- record = S 38° W 23.8']

[3] a 12" pine tree, N 2° W 19.5 feet, marked "¼ S 4 BT"
[New B.T.] [FB 112A-16]

[10] Original corner. At the corner position I found a properly marked Bureau of Land Management brass capped iron post dated 1963, from which bears:

[1] a 45" yellow pine, S 34° E 22.7 feet, [original B.T.- record = S 34° E 22.7']

[2] a 12" fir tree, S 17° W 48.4 feet [New BLM B.T.]

[3] a 12" fir tree, S 87° W 64.5 feet [New BLM B.T.]

[4] a 36" pine tree, N 32° W 9.5 feet [original B.T.- record = N 31° W 9.9']

[5] a 10" fir tree, N 15° E 52.0 feet [New BLM B.T.]

[6] a 14" fir tree, S 60° E 21.8 feet [New BLM B.T.]
[FB 112-6]

[11] Original corner. At the corner point I found a properly marked Bureau of Land Management brass capped iron post dated 1963, from which bears:

[1] a 42" fir tree, N 61° E 20.6 feet with a healed blaze [original B.T.- record = N 54° E 21.1']

[2] a 20" cedar tree, S 9° W 17.5 feet with a healed blaze [original B.T.- record = S 10° W 17.8']

[3] a 15" cedar tree, N 83° E 39.2 feet [New BLM B.T.]

[4] a 12" fir tree, S 25° E 13.0 feet [New BLM B.T.]
[FB 112-5]

I replaced the stone with a properly marked brass capped iron post set 20" in the ground, from which bears:

- [1] an 18" pine tree, N 19° W 20.7 feet, marked "¼ S 33 BT"
- [2] a 16" pine tree, N 50° E 20.4 feet, marked "¼ S 33 BT"

Deposited the stone beside the pipe. [FB 112B-22]

[5] Original corner. Found a firmly set 14" x 12" x 6" granite stone with an "X" on top and 3 notches on the east and west faces, from which bears:

- [1] an 8" fir tree, N 46° E 4.9 feet, with unopened blaze [original B.T.- record = N 41° E 5.2']
- [2] Rotted remains of a 6" fir tree, N 26° W 3.3 feet, with scribing visible [original B.T.- record = N 26° W 3.3']
- [3] a 12" fir tree, N 21° W 12.9 feet, marked "T40S R1E, S 33 BT". [New B.T.]

I did not replace the stone with an iron post.

[6] Original corner. Found an 18" x 8" x 7" granite stone with 3 grooves on the east and west faces, from which bears:

- [1] a 26" yellow pine tree, S 22° E 70.1 feet, with unopened blaze [original B.T.- record = S 26½° E 69.3']
- [2] a 34" fir tree, S 55° W 58.1 feet with unopened blaze [original B.T.- record = S 65° W 58.7']
- [3] a 10" fir tree, S 50° W 11.7 feet, marked "T41S R1E S 4 BT" [New BT]
- [4] a 15" fir tree, S 60° E 14.2 feet, marked "T41S R1E S 3 BT" [New BT]

I replaced the stone with a properly marked brass capped iron post set 20" in the ground. I deposited the stone beside the post. [FB 112B-29]

[7] At the proportionate position for the one-quarter corner on the north boundary of section 4, I set a properly marked brass capped iron post 20" in the ground, and marked the following trees:

- [1] a 7" pine tree, S 37° E 47.3 feet, marked "¼ S 4 BT"
- [2] a 12" fir tree, S 43° W 42.6 feet, marked "¼ S 4 BT" [FB 112B-26]

[8] At the proportionate position for the corner of lots 1 and 2, I set a properly marked brass capped iron post 20" in the ground, and marked the following trees:

- [2] an uprooted 10" pine snag, bears northwest 10 feet [original B.T. - record = N 62° W 8.9']

I replaced the stone with a properly marked brass capped iron post and marked the following trees:

- [1] a 12" pine tree, N 84° E 99.6 feet, marked "T40S R1E S 33 B.T."
- [2] a 7" pine tree, N 39° W 77.2 feet, marked "T40S R1E S 32 B.T."

Deposited the original stone beside the post. [FB 112B-29]

- [3] Original corner. Found a 15" x 12" x 8" granite stone from which bears:

- [1] a 22" cedar stump, S 38° E 71.9 feet, with weathered scribing visible and legible [original B.T.- record = S 38° E 77.2']
- [2] an uprooted 36" sugar pine snag, S 50° W 189 feet [original B.T.- record = S 48° W 190.7']

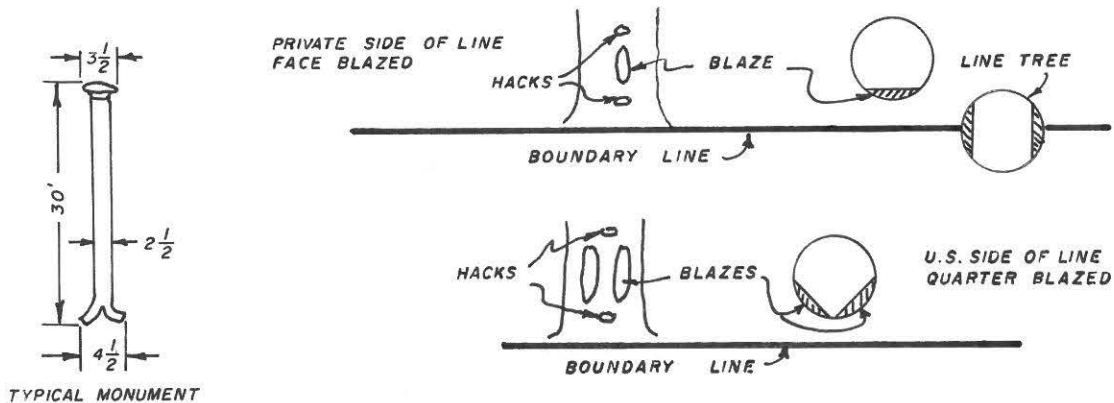
This corner as found lies north of the controlling line forming the south boundary of section 32, Township 40 South, Range 1 East, Willamette Meridian. As such, the corner as found was used to control for line to the south. Set a properly marked brass capped iron post 20" in the ground at the point of intersection of the west line of section 4 and the south line of section 32, from which bears:

- [1] an 18" cedar tree, S 37° E 32.9 feet, marked "T41S R1E S 4 BT"
- [2] a 10" pine tree, S 32° W 21.2 feet, marked "T41S R1E S 5 BT"
- [3] the original scribed stone, N 0°19'30" E 4.08 feet. [FB 112B-28]

- [4] Original corner. Found an 18" x 14" x 10" stone marked "¼" on north face, from which bears:

- [1] a 30" rotted fir snag, S 9° W 16.5 feet, with scribing found in the debris [original B.T.- record = S 9° W 16.5']
- [2] the root hole of an uprooted 10" fir snag with scribing visible bears N 45° E 7.9 feet [original B.T.- record = N 45° E 7.9']

All caps are marked in accordance with instructions contained in the Bureau of Land Management publication "Manual of Instruction for the Survey of the Public Lands, 1947 edition". Each cap is also marked with the date of 1973 and my state license number, 827. All trees marked as corner accessories were marked with a scribing tool in the live wood. No bark scribes were used. Measurements to the bearing tree are to the centers of the trees. All trees 5" diameter and larger lying within 7 feet on either side of the lines permanently marked by this survey were blazed in the following manner:



In areas of sparse timber growth some trees were marked in excess of 7 feet from the true line. All blazes and hack marks extend into the live wood tissues of the tree. Boundary signs were posted on trees at intervals of 660 feet or less along the lines.

CORNER DESCRIPTIONS

[1] Original corner. I found a 14" x 10" x 6" granite stone, marked "¼" on the north face, from which bears:

- [1] a 28" sugar pine stump, N 19° E 52.1 feet [original B.T. Record = N 19° E 52.1']
- [2] a 32" sugar pine stump, S 3° W 36.0 feet [original B.T. record = S 9° W 37.6']

I replaced the scribed stone with a properly marked brass capped iron post set 20" in the ground, and marked the following trees:

- [1] a 14" fir tree, N 24½° W 32.3 feet, marked "¼ S 32 B T"
- [2] a 5" pine tree, N 26° E 6.2 feet, marked "¼ S 32 B T"

Deposited the original stone beside the iron post. [FB 112B-22]

[2] Original corner. Found a 14"x 9"x 6" granite stone with 4 notches on east and 2 notches on west edges from which bears:

- [1] the rotted remains of a pine tree, N 36° E 7.6 feet with scribing visible and legible [original B.T.-record = N 36° E 7.6']

FIELD NOTES
OF A
DEPENDENT RESURVEY
PORTIONS OF TOWNSHIP 41 SOUTH, RANGE 1 EAST,
WILLAMETTE MERIDIAN
1973

PURPOSE OF SURVEY

This survey was made at the request of the United States Department of Agriculture, Forest Service, with the purpose of restoring land corners in their original locations according to the best available evidence, and dividing portions of sections 4 and 18 into their aliquot parts.

Equipment used on the survey consisted of Wild T-1-A repeating theodolites, 200 and 300 foot steel band chains and a Hewlett-Packard 3800 Distance Meter.

The survey was performed from June through September, 1973.

HISTORY OF PREVIOUS SURVEYS

The north, south and west boundaries, and subdivisional lines of the east half of the township were surveyed by Nathaniel Ford in 1855. The Oregon-California State Line which forms the south boundary of the township was surveyed by Daniel G. Major in 1868. The south boundary [State Line] was retraced and closing corners for the Ford lines established by Jesse Applegate in 1870. In 1895 Rufus S. Moore retraced the east 3 miles and resurveyed the west 3 miles of the north boundary. In 1906 Fred Mensch resurveyed the west boundary and west 3 miles of the north boundary, retraced the west 3 miles of the south boundary, resurveyed a portion of and completed the subdivisional lines of the township. The entire south boundary and south tier of sections of the township were resurveyed by Fred W. Rodolf in 1916.

The Red Poffrey placer mining claims were originally surveyed by Joseph A. Ganong under instructions dated March 11, 1919, with the amended survey [Mineral Survey No. 818] performed by C. Frank Rhodes in June, 1923.

No other surveys, either public or private, appear of record in the west-half of the township.

MONUMENTS AND LINE MARKINGS

All monuments set by this survey consist of 3½" diameter brass caps securely riveted to 2" x 30" galvanized and flared iron pipes.