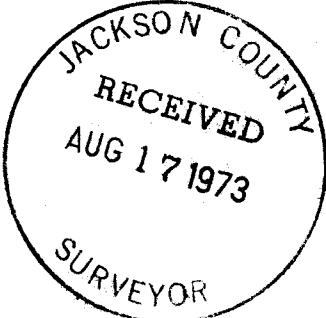
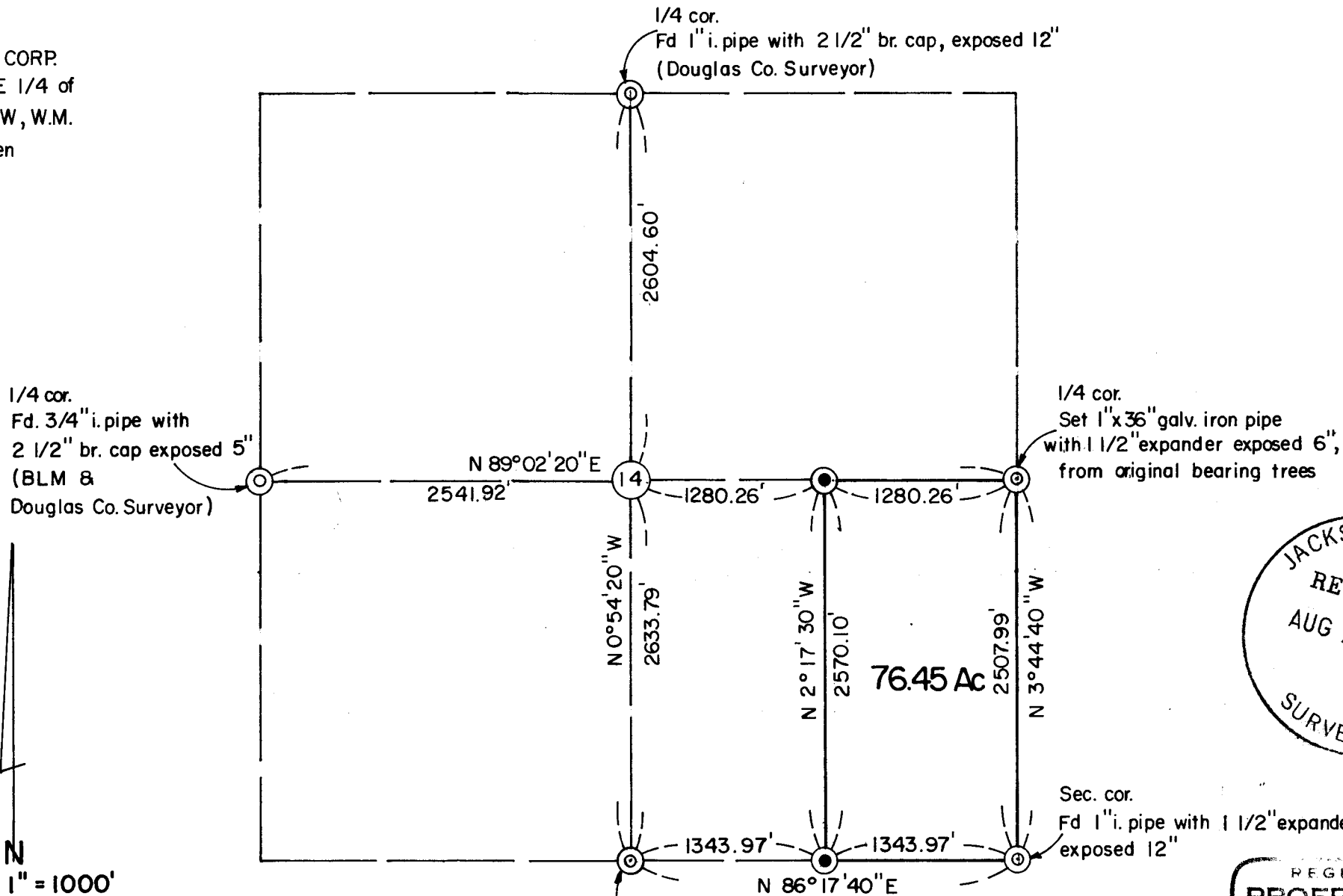


Survey For:
 BOISE CASCADE CORP.
 Located in the SE 1/4 of
 Sec.14, T.32S., R1W, W.M.
 By: Mark E. Boyden
 August 9, 1973



REGISTERED
 PROFESSIONAL
 LAND SURVEYOR

Mark E. Boyden
 OREGON
 NOV. 9, 1951
 MARK E. BOYDEN
 281

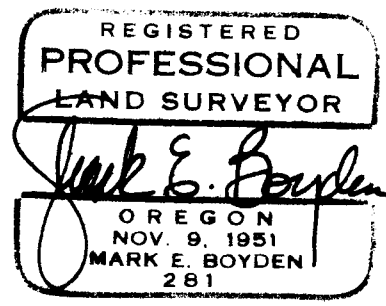
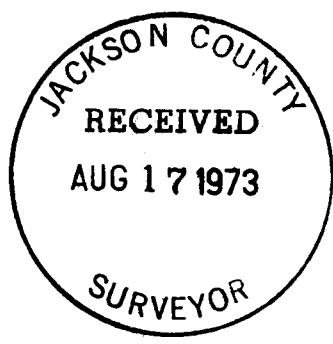
- Scale: 1" = 1000'
 Basis of Bearings:
 Mean of 8 Solar
 Observations
- ⊙ Governm't cor. monument as indicated.
 - Set 1" x 36" galv. i. pipe

FOR: Boise Cascade Corporation

Scribed a 5" Fir, "CE 1/16 S14-BT" which bears S 20 1/2° E, 23.2 feet to the face of the lower blaze;

Scribed an 18" Fir "CE 1/16 S14-BT" which bears S 84 1/2° W, 13.7 feet to the face of the lower blaze.

August 9, 1973



FOR: Boise Cascade Corporation

axe face, bears S 25° W, 64.2 feet to the center) (BLM 1955 Record: 12" W. Fir, S 47° W, 64.02 feet);

The bearing tree established by the Douglas County Surveyor (now a 14" Fir with open faces bears S 39 3/4° W, 67.7 feet) (Douglas County Record: 13" D. Fir, S 40° W, 67.5 feet).

At the Quarter corner common to Sections 14 and 23, set a 1" x 36" galvanized iron pipe exposed 9", from which:

The original bearing tree (now a 28" Fir, scribed "1/4S" bears S 36° E, 16.6 feet to the center (Record: 12" Fir, S 33° E, 15.84 feet);

The original bearing tree (now a 13" Fir with healed blazes bears N 74° W, 2.8 feet to the center (Record: 4" Fir, N 72° W, 2.64 feet).

Scribed a 22" Fir, "1/4S-BT" which bears N 36 1/4° E, 8.8 feet to the face of the lower blaze.

Found no evidence of the original corner stone.

At the East one-sixteenth Section corner common to Sections 14 and 23, set a 1" x 36" galvanized iron pipe with a 1 1/2" expander filled with lead stamped:

S 14
S 23
E 1/16 1967 , exposed 6" from which:

Scribed a 15" Fir, "E 1/16 S14-BT" which bears N 15° E, 18.7 feet to the face of the lower blaze,

Scribed an 8" Fir "E 1/16 S14-BT" which bears N 87° W, 23.0 feet to the face of the lower blaze.

At the Center - East one-sixteenth Section corner of Section 14, set a 1" x 36" galvanized iron pipe with a 1 1/2" expander filled with lead stamped:

T32SR1W
Ctr. 1/16
E. Cor
S 14
1973 , exposed 5", from which:

FOR: Boise Cascade Corporation

Fir bearing trees down with scribe marks visible in both trees. From the center of the stumphole of the Southeast bearing tree, ran Government Record bearing and distance, N 72° W, 4.62 feet and set a 1" x 36" galvanized iron pipe with a 1 1/2" expander filled with lead stamped:

T32SR1W
 1/4 14 13 cor
 1973 , exposed 6", from which:

A 28" Fir, scribed "1/4S-BT" bears N 72° E, 35.2 feet to the face of the lower blaze;

A 5" Fir, scribed "1/4S-BT" bears N 32° W, 15.7 feet to the face of the lower blaze.

Found no evidence of the original corner stone.

At the Quarter corner common to Sections 11 and 14, found a 1" iron pipe with a 2 1/2" brass cap set for corner by the Douglas County Surveyor in 1968, exposed 12", from which:

The original bearing tree (now a 30" Fir with healed blazes) bears N 52° W, 5.0 feet to the center (Record: 20" Fir, N 45° W, 4.62 feet);

The original bearing tree (now a 12" Fir snag scribed "1/4S-BT") bears S 6 1/4° W, 16.7 feet to the center (Record: 14" Fir, S 5° W, 13.2 feet);

Found an 18" Fir (established by the Douglas County Surveyor) bears S 59° W, 18.3 feet to the center.

At the Quarter corner common to Sections 14 and 15, found the 3/4" iron pipe with standard G.L.O. brass cap set for corner by the BLM in 1955, exposed 5" with "1968" added by the Douglas County Surveyor, from which:

The bearing tree established by the BLM in 1955 (now a 40" Red Fir with healed blaze) bears S 28 1/2° E, 48.3 feet to the center (BLM 1955 Record: 30" Red Fir, S 44 1/2° E, 48.84 feet); (Douglas County 1968 Record, 32" D. Fir, S 28 1/2° E, 48.8 feet);

The bearing tree established by the BLM in 1955 (now a 16" W. Fir with

SURVEY NARRATIVE TO COMPLY WITH O. R. S. 209.250

FOR: Boise - Cascade Corporation
North Pacific Highway
Medford, Oregon 97501

PURPOSE: 1. To subdivide Section 14, T32SR1W, W. M..
2. To monument the corners and mark the lines for the East-half of the Southeast Quarter of said Section 14.

PROCEDURE: Utilizing a one-second theodolite, an electronic measuring instrument and chain, tied to the 4 Quarter corners and the Southeast corner of said Section 14. From said data, computed the true line locations for the East-half of the Southeast Quarter of Section 14 and ran same by transit - chain methods to check the previous calculated positions. Said checks were within 1:3000 and the overall triangulation scheme was double-checked to an accuracy of at least 1:50,000.

At the Southeast corner of said Section 14, found a 1" galvanized iron pipe with a 1 1/2" expander filled with lead stamped:

14 13
23 24
1967 , exposed 12"

from which: The original bearing tree (now a 31" broken-off Fir stump) bears N 38 1/2° E, 18.0 feet to the center (Record: 25" Fir, N 38° E, 17.16 feet);

The original bearing tree (now a 36" Fir with "BT" scribe visible bears S 64 1/2° E, 13.5 feet to the center (Record: 22" Fir, S 66° E, 12.54 feet);

The original bearing tree (now a 27" Fir with healed blazes) bears S 8 1/2° W, 15.8 feet to the center (Record: 20" Fir, S 10° W, 15.18 feet);

The original bearing tree (now a 35" Fir with healed blazes) bears N 57 1/2° W, 15.7 feet to the center (Record: 24" Fir, N 56° W, 15.84 feet).

No evidence was found of the original corner stone.

At the Quarter corner common to Sections 13 and 14, found both original