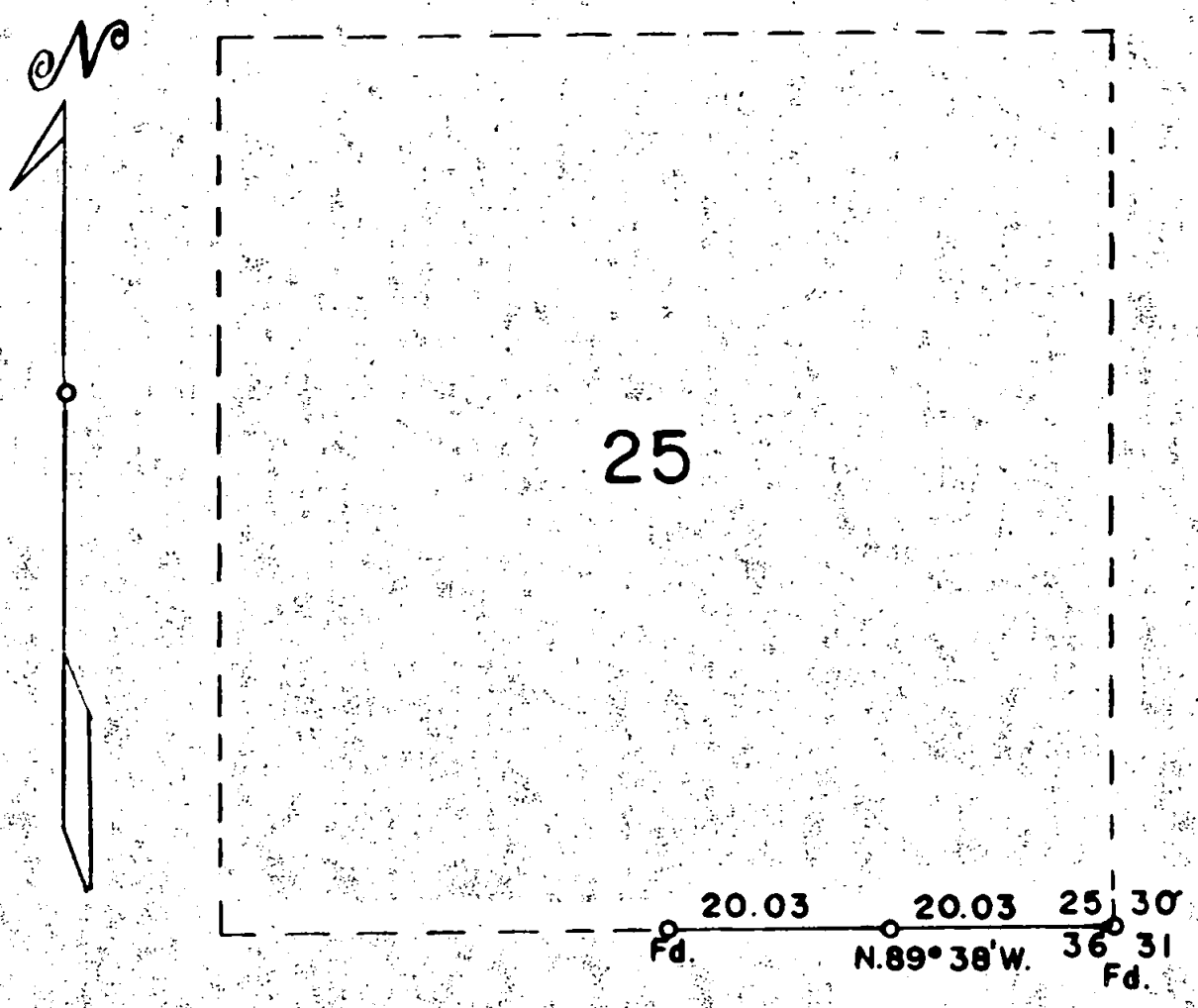


T.38S., R.5W., W.M. JOSEPHINE COUNTY OREGON

DEPENDENT RESURVEY OF THE EAST 1/2 OF THE LINE BETWEEN SECTIONS 25 AND 36



Scale: 1 inch = 20 chains

Mean Magnetic Declination 19°15' East

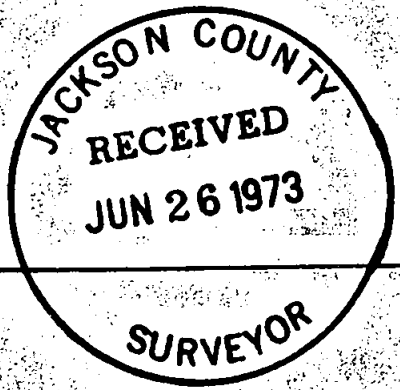
The bearing of the line is referred to the true meridian
determined by a solar observation

o = Corner Occupied and Monumented

— Line Surveyed - - - - Lines Not Retraced

Survey executed March 29, 1965 for W. R. Newsom of
18251 Williams Highway, Grants Pass, Oregon

I hereby certify that the survey represented by this
plat is executed in conformity with the laws of
the State of Oregon.



Marvin C. Ramsey

Chains

The section corner of sections 25, 30, 31 and 36 is monumented by the General Land Office, dated 1919 from which

A Douglas fir sawed stump 24 ins. in diam., bears N. 80° E., 65 lks. dist.

A Douglas fir 22 ins. in diam., bears S. 15° E., 21 lks. dist., healed

A Douglas fir 26 ins. in diam., bears S. 76° W., 43 lks. dist., healed

Fail to find the other bearing tree and appears to have been destroyed by a logging operation.

New bearing trees

A black oak 8 ins. in diam., bears N. 47° E., 66 lks. dist.,
mkd. T 38 S R $\frac{1}{2}$ W S30 R $\frac{1}{2}$ O $\frac{1}{4}$ BT

A black oak 10 ins. in diam., bears N. 63° W., 62 lks. dist.,
mkd. T38S R $\frac{1}{2}$ W S25 R $\frac{1}{2}$ O $\frac{1}{4}$ BT

The geographic position of this corner is latitude 42° 13' 49" N., and longitude 123° 13' 45" W. The observed magnetic declination is 19° 15' East.

March 29, 1965: at 9 a. m., P. S. T., I set off 42° 13' 49" N. on the latitude arc; 3° 30' N., on the declination arc; of my Buff solar transit and determine a meridian with the solar attachment.

Thence N. 89° 38' W., on true line bet. secs. 25 and 36.

20.03 Point for the East 1/16 section corner at proportionate distance.

Set an iron pipe 3 ft. long 1 in. in diam., 28 ins. in the ground,
mkd. R $\frac{1}{2}$ O $\frac{1}{4}$, from which

A Douglas fir 14 ins. in diam., bears S. 41 $\frac{1}{2}$ ° E., 124 lks. dist.,
mkd. E 1/16 S36 R $\frac{1}{2}$ O $\frac{1}{4}$ BT

A Douglas fir 16 ins. in diam., bears N. 68° W., 56 lks. dist.,
mkd. E 1/16 S25 R $\frac{1}{2}$ O $\frac{1}{4}$ BT

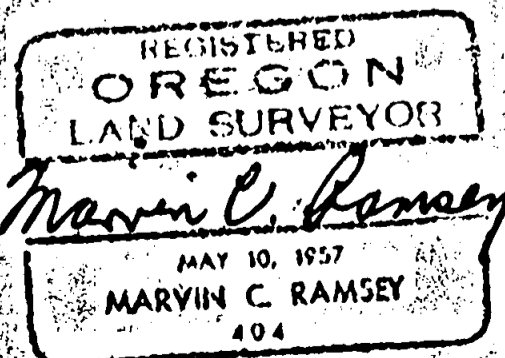
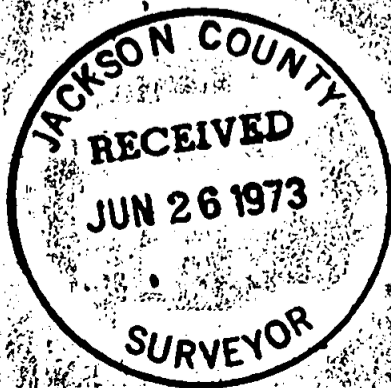
40.06 To the $\frac{1}{4}$ section corner which is monumented and witnessed by the General Land Office, dated 1919.

One of the bearing trees is a wind fall and the other one is a dead snag, therefore I take new bearing trees

A Douglas fir 10 ins. in diam., bears S. 15° W., 23 $\frac{1}{2}$ lks. dist.,
mkd. $\frac{1}{4}$ S36 R $\frac{1}{2}$ O $\frac{1}{4}$ BT

A Douglas fir 12 ins. in diam., bears N. 62° W., 10 $\frac{1}{2}$ lks. dist.,
mkd. $\frac{1}{4}$ S25 R $\frac{1}{2}$ O $\frac{1}{4}$ BT

I hereby certify that the bearing of the line recorded in this survey was determined by a solar observation and the survey described in the foregoing field notes was executed in conformity with the laws of the State of Oregon.



TOWNSHIP 38 SOUTH, RANGE 5 WEST, WILLAMETTE MERIDIAN, OREGON

DEPENDENT RESURVEY OF THE EAST HALF OF THE LINE BETWEEN

SECTIONS 25 AND 36

EXECUTED AT THE REQUEST OF W. R. NEWSOM

OF

GRANTS PASS, OREGON

BY

Marvin C. Ramsey, Registered Professional Land Surveyor

Assistants

Paul E. Jonas

John E. Mitchell