

OPALINA VILLAGE UNIT NO. 1

Located in the NE. 1/4, Sec. 21, T. 36 S. R. 1 W., W.M.

And in lots 173 & 174 Roguelands Irrigated Orchard Tracts (Recorded)

Jackson County, Oregon

DEDICATION

KNOW ALL MEN BY THESE PRESENTS, That we Melvin F. Hoover, Claud W. Hoover, Elsie Hoover by Melvin F. Hoover as Power of Attorney and Terry D. Green are the owners in fee simple of the lands hereon described and that we have subdivided same into lots as shown hereon, and the number and size of the lots and lengths of all lines are plainly set forth, and that this plat is a correct representation of the said subdivision, and we do hereby dedicate to the White City Sanitary District those sewer easements as shown hereon, and we do hereby designate said subdivision as, OPALINA VILLAGE UNIT NO. 1.

IN WITNESS WHERE OF, we have hereunto set our hands and seals this 9th day of February, 1973

Melvin F. Hoover
Melvin F. Hoover
Claud W. Hoover
Claud W. Hoover

Elsie Hoover by Melvin F. Hoover
Elsie Hoover by Melvin F. Hoover as Power of Attorney
Terry D. Green
Terry D. Green

STATE OF OREGON } SS
County of Jackson }
February 9th A.D. 1973

Personally appeared the above-named Melvin F. Hoover, Claud W. Hoover, Elsie Hoover by Melvin F. Hoover as Power of Attorney and Terry D. Green, and acknowledged the foregoing to be their voluntary act and deed. Before me:

Robert L. Scoring
Notary Public for Oregon

My commission expires the 25th day of July, 1975

Examined and approved by the Rogue River Valley Irrigation District in regular session this the 7th day of February, 1973.

L. J. Pralle
Secretary

W. B. Bohm
President

Examined and approved for the use of individual wells and community sewage facilities this the 27th day of Feb., 1973.

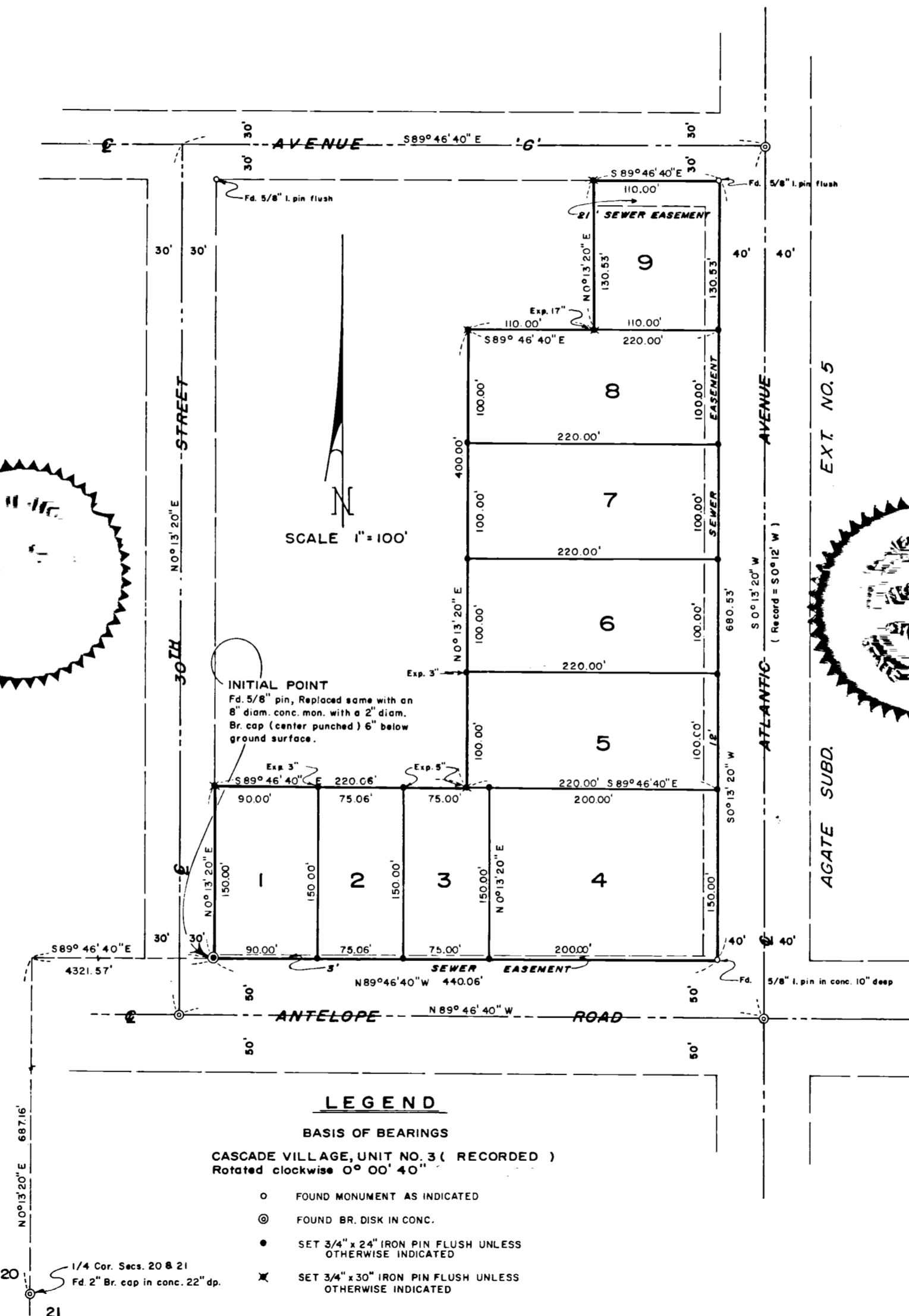
Thos. W. Henderson
County Health Officer

Examined and approved this 27th day of MARCH, 1973.

Ray E. Stewart by David H. Hill
County Assessor

All taxes paid in full to date this the 27 day of Mar., 1973.

W. A. Hammond
County Sheriff



SURVEYOR'S CERTIFICATE

STATE OF OREGON } SS
County of Jackson }

I, Mark E. Boyden, a duly registered surveyor of the State of Oregon, being first duly sworn, do hereby certify that under my direction, the tract of land here on shown has been correctly surveyed and marked with proper monuments, and the said plat is a correct representation of the same, and the following is an accurate description of the boundary lines: Commencing at the Quarter corner common to Sections 20 and 21, Township 36 South, Range 1 West of the Willamette Meridian in Jackson County, Oregon; thence North 0° 13' 20" East, 687.16 feet to the North boundary of Antelope (County) Road; thence South 89° 46' 40" East along the North boundary of said Road, 4321.57 feet to an intersection with the East boundary of Thirtieth Street for the initial point of beginning, said initial point being monumented with an 8" diameter concrete monument with bronze disk, thence North 0° 13' 20" East along the East boundary of Thirtieth Street, 150.00 feet; thence South 89° 46' 40" East, 220.06 feet; thence North 0° 13' 20" East, 400.00 feet; thence South 89° 46' 40" East, 110.00 feet; thence North 0° 13' 20" East, 130.53 feet to the South boundary of Avenue "C"; thence South 89° 46' 40" East along the South boundary of Avenue "C", 110.00 feet to the West boundary of Atlantic Avenue; thence South 0° 13' 20" West along the West boundary of Atlantic Avenue, 680.53 feet to the North boundary of Antelope Road; thence North 89° 46' 40" West along the North boundary of Antelope Road, 440.06 feet to the initial point of beginning.

Mark E. Boyden
Surveyor

Subscribed and sworn to before me this 28 day of February, 1973

Darlene L. Dejean
Notary Public for Oregon

My commission expires the 21 day of March, 1975.

Examined and approved by the Jackson County Planning Commission in regular session this the 4th day of April, 1973.

Laurence Deemin
Secretary

CR Parkhurst
President

Examined and recommended for approval by the Board of County Commissioners this 3 day of April, 1973.

Edward A. McQuay
County Surveyor

For order of the Board of County Commissioners approving this plat see Volume _____, page _____, of County Commissioners Journal of Proceedings.

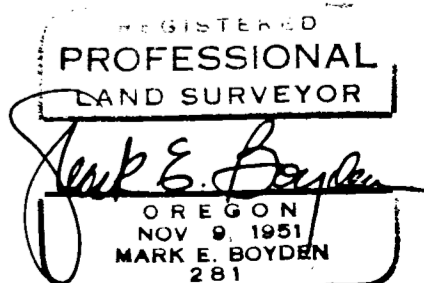
Stanley Simpson
County Clerk

Filed for record this the 11th day of April, 1973, at 10:41 o'clock A.M. and recorded in Volume 12 of plats at page 3 of records of Jackson County, Oregon.

Stanley Simpson
County Clerk

I hereby certify that this tracing is a photocopy of the original plat.

Mark E. Boyden
Surveyor



SURVEY NARRATIVE TO COMPLY WITH O.R.S. 209.250

FOR: Terry Green, etal
P. O. Box 315
Medford, Oregon

PURPOSE: To monument and prepare a subdivision plat for OPALINA
VILLAGE, UNIT NO. 1, being located in the NE 1/4 of Sec. 21,
T36SR1W, W. M..

PROCEDURE: Utilizing a one-second theodolite, an electronic measuring
instrument and chain, tied from the concrete monument at the
re-established Quarter corner common to Sections 20 and 21
to monuments controlling the said subdivision area. Monuments
were found at all corners of the area enclosed by streets as
set on Recorded Survey No. 1868.
From said data, monumented the subdivision as shown on said
Official Plat.

January 22, 1973

