

5065-A

FND. 3/4" CONDUIT IN ROCK MND.,  
O.B.T.'S. W/HEALED FACES  
24" FIR, S 22°E 24 LKS.  
16" FIR, S 67°W 14 LKS.  
24" FIR, N 78°W 21 LKS.  
16" FIR, N 71°E 18 LKS.  
(CHOPPED OUT)

80.50 CH.  
R/L FELL 67.24 LKS.  
W. OF SEC. COR.

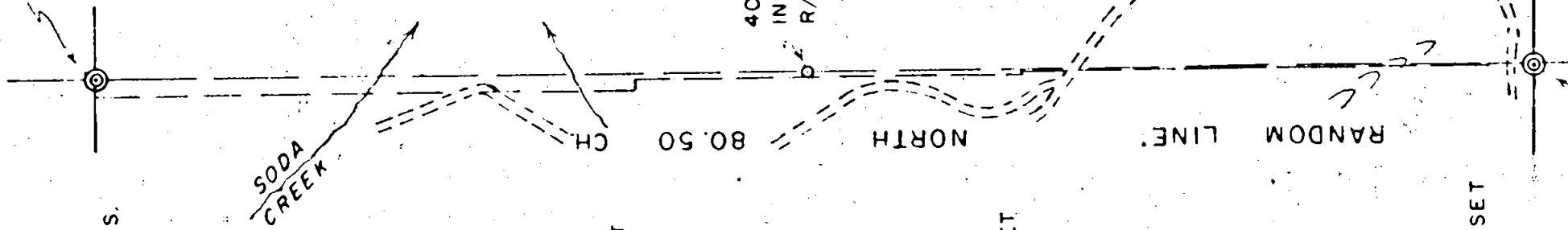
48.57 CH. OFFSET  
63.89 LKS. W.

28.45 CH. OFFSET  
6.06 LKS. W.

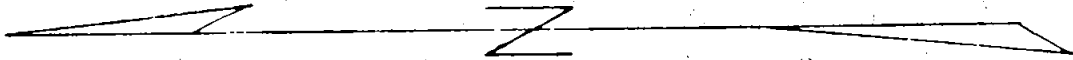
2.36 CH. OFFSET  
3.03 LKS. W.

40.191 CH. N., FD. 3/4" CONDUIT  
IN ROCK MND., 6.32 LKS. E. OF  
R/L, NO RECORD. NO B.T.'S. FND.

N 89° 27' 44" W 40.308 CH.



TRUE BEARINGS  
PER SOLAR  
OBSERVATIONS.



NOTES:

THIS SURVEY AND MAP WAS COMPLETED UNDER  
INSTRUCTIONS OF AND FOR THE EXCLUSIVE USE OF

BUREAU OF LAND MANAGEMENT, PORTLAND SERVICE CENTER,  
P.O. BOX 3861, PORTLAND, OREGON. 97208.

- ROAD
- ~ CREEKS
- > RIDGES
- > INTERMITTENT CREEK

Survey of True and Random Lines in Section 7,  
T39S, R4E, W.M., Jackson County, Oregon

Narrative description to comply with Par. 209.250, O.R.S.

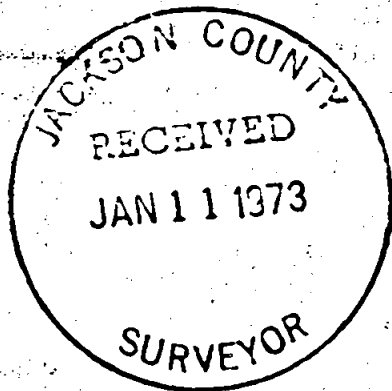
for: Bureau of Land Management, Portland Service Center,  
P.O. Box 3861, Portland, Oregon 97208

Purpose: To establish and mark true and random lines as shown on my map,  
In accord with instructions from B.L.M.

Procedure:

Both the West half of the South line, and the entire West line of Section 7 were run as random lines. The random West line was marked in place as run, with yellow flagging, per instructions. The true West  $\frac{1}{2}$  of the South line was marked with blue flagging and aluminum tags, per instructions.

Bearings were determined from solar observations taken at the South  $\frac{1}{2}$  corner, and on the random line 498.2 feet Southerly from the Northwest Section corner. Government corners found were verified with U.S.G.L.O. and B.L.M. and Jackson County Surveyor's file records.



June 28, 1972

28.45 CH. OFFSET  
6.06 LKS. W.

RANDOM LINE

2.36 CH. OFFSET  
3.03 LKS. W.

N 89° 27' 44" W 40.308 CH.

SEC. 7  
SEC. 18

TRUE

POND

1/4 COR., FND. 1 1/2" I. PIPE/BR. CAP,  
1 O.B.T. SNAG, 2 NEW B.T.'S. PER  
JACKSON CO. SURVEYOR'S RENEWAL, 1966.

FD 2" I. PIPE W/BLM. BR. CAP, 1967

O.B.T. W/ROTTED FACE, 20" FIR, S58°W 24 LKS.

O.B.T. W/HEALED FACE, 37" FIR, S20°E 21 LKS.

FND NEW B.T.'S W/SCRIBE VISIBLE

17" W. FIR, S44°W, 65 LKS.

17" W. FIR, N8°W, 105 LKS.

14" W. FIR, N11°E, 80 LKS.

NOTES:

THIS SURVEY AND MAP WAS COMPLETED UNDER  
INSTRUCTIONS OF AND FOR THE EXCLUSIVE USE OF

BUREAU OF LAND MANAGEMENT, PORTLAND SERVICE CENTER,  
P.O. BOX 3861, PORTLAND, OREGON, 97208.

- ROAD
- ~ CREEKS
- > RIDGES
- - - INTERMITTENT CREEK

# SURVEY OF TRUE AND RANDOM LINES

IN SECTION 7, T. 39 S., R. 4 E., W.M., OREGON

SCALE: 1 INCH = 660 FEET

JUNE 28, 1972.

ROBT. M. THOMPSON & ASSOC.

5065-B

5065