

SURVEY OF TRUE AND RANDOM LINES

IN SECTIONS 11, 13, 14, 25, 36, TWP. 40 SOUTH, RANGE 2 EAST, W.M.
AND SECTION 30, TWP. 40 SOUTH, RANGE 3 EAST, W.M., JACKSON COUNTY, ORE.

SCALE: 1 INCH = 660 FEET

SEPTEMBER 15, 1972.

ROBT. M. THOMPSON & ASSOC.

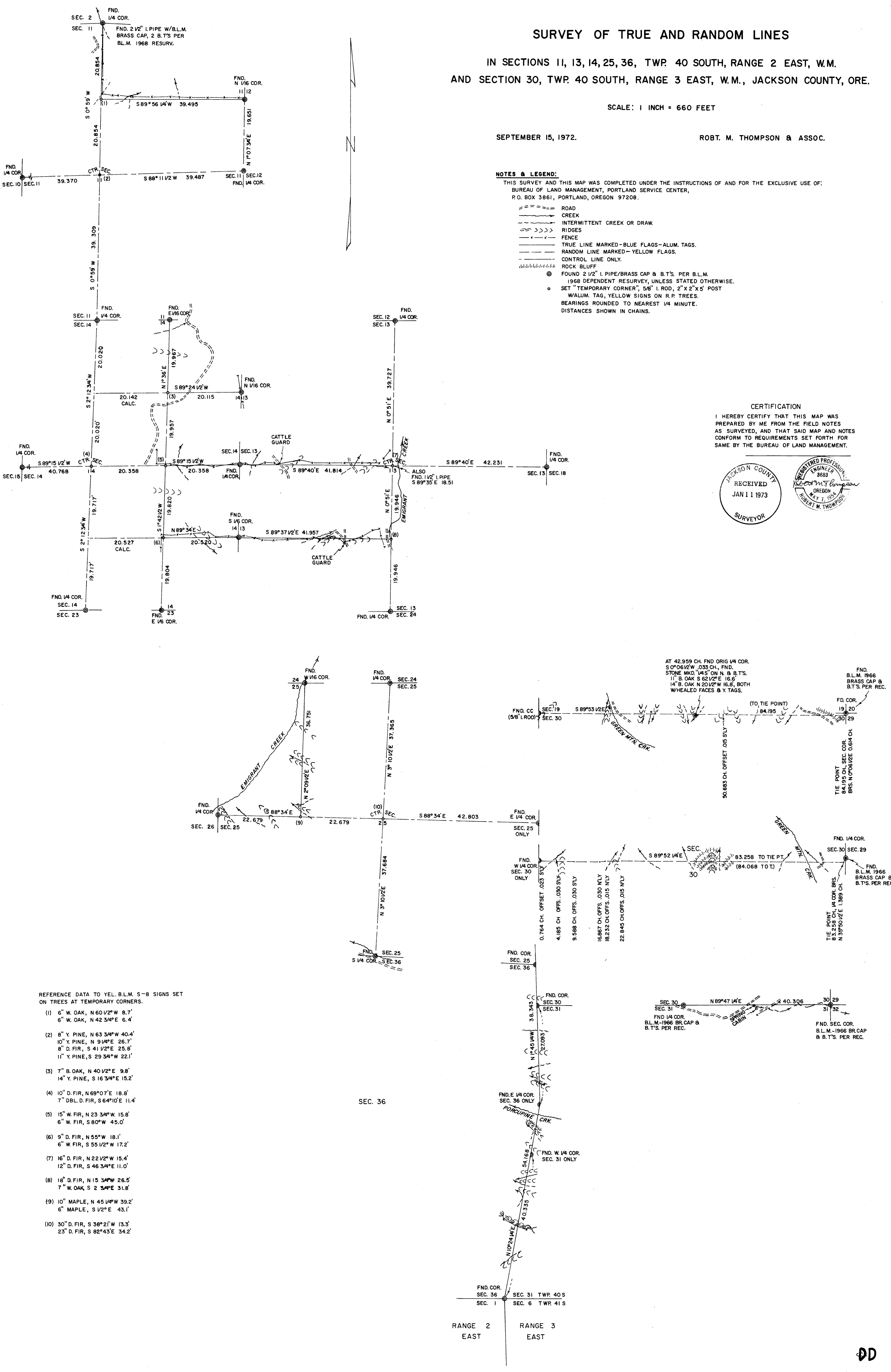
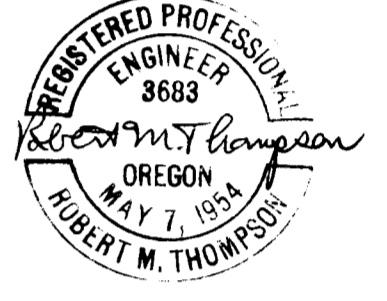
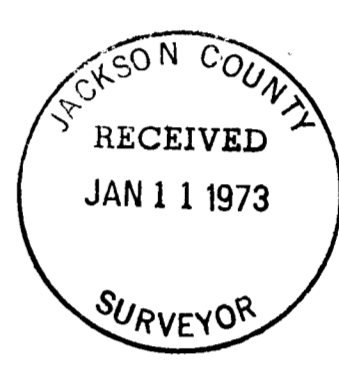
NOTES & LEGEND:

THIS SURVEY AND THIS MAP WAS COMPLETED UNDER THE INSTRUCTIONS OF AND FOR THE EXCLUSIVE USE OF:
BUREAU OF LAND MANAGEMENT, PORTLAND SERVICE CENTER,
P.O. BOX 3861, PORTLAND, OREGON 97208.

- ROAD
- CREEK
- INTERMITTENT CREEK OR DRAW.
- RIDGES
- FENCE
- TRUE LINE MARKED-BLUE FLAGS-ALUM. TAGS.
- RANDOM LINE MARKED-YELLOW FLAGS.
- CONTROL LINE ONLY.
- ROCK BLUFF
- FOUND 2 1/2" I. PIPE/BRASS CAP & B.T.S. PER B.L.M. 1968 DEPENDENT RESURVEY, UNLESS STATED OTHERWISE.
- SET "TEMPORARY CORNER", 5/8" I. ROD, 2" X 2" X 5' POST W/ALUM. TAG, YELLOW SIGNS ON R.P. TREES.
- BEARINGS ROUNDED TO NEAREST 1/4 MINUTE. DISTANCES SHOWN IN CHAINS.

CERTIFICATION

I HEREBY CERTIFY THAT THIS MAP WAS PREPARED BY ME FROM THE FIELD NOTES AS SURVEYED, AND THAT SAID MAP AND NOTES CONFORM TO REQUIREMENTS SET FORTH FOR SAME BY THE BUREAU OF LAND MANAGEMENT.



REFERENCE DATA TO YEL. B.L.M. S-B SIGNS SET ON TREES AT TEMPORARY CORNERS.

- (1) 6" W. OAK, N 60 1/2° W 8.7'
6" W. OAK, N 42 3/4° E 6.4'
- (2) 8" Y. PINE, N 63 3/4° W 40.4'
10" Y. PINE, N 9 1/4° E 26.7'
8" D. FIR, S 41 1/2° E 25.8'
11" Y. PINE, S 29 3/4° W 22.1'
- (3) 7" B. OAK, N 40 1/2° E 9.8'
14" Y. PINE, S 16 3/4° E 15.2'
- (4) 10" D. FIR, N 69° 07' E 18.8'
7" DBL. D. FIR, S 64° 10' E 11.4'
- (5) 15" W. FIR, N 23 3/4° W 15.8'
6" W. FIR, S 80° W 45.0'
- (6) 9" D. FIR, N 55° W 18.1'
6" W. FIR, S 55 1/2° W 17.2'
- (7) 16" D. FIR, N 22 1/2° W 15.4'
12" D. FIR, S 46 3/4° E 11.0'
- (8) 18" D. FIR, N 15 3/4° W 26.5'
7" W. OAK, S 2 3/4° E 31.8'
- (9) 10" MAPLE, N 45 1/4° W 39.2'
6" MAPLE, S 1/2° E 43.1'
- (10) 30" D. FIR, S 38° 21' W 13.3'
23" D. FIR, S 82° 43' E 34.2'

RANGE 2 EAST RANGE 3 EAST

Survey of True and Random Lines In Sections
11, 13, 14, 25, 36, T40S R2E W.M., and Section 30,
T 40S R3E W.M., Jackson County, Oregon

Narrative description to comply with Par. 209.250, O.R.S.

for: Bureau of Land Management, Portland Service Center,
P.O. Box 3861, Portland, Oregon 97208

Purpose: To obtain control necessary for determining and marking locations of those true and random lines, and "Temporary corners", which were requested.

Procedure:

All lines, except in a few locations, were run as straight random lines, offsetting the minimum amount needed to clear obstacles. All corners previously found, or proportionately set by the bureau of Land Management, were accepted as found to be set. No attempt was made to either prove or disprove the accuracy of those corners which had been proportionately set by the B.L.M. Bearings are referenced to true meridian, based on numerous solar observations taken throughout this survey.

Those lines shown on my map as "Random Lines" are shown and were left as actually surveyed on the ground, marked by yellow flagging. The "Control Lines" are shown in the computed true locations, based on their first being surveyed in a manner similar to that of the "Random Lines". The "True Lines" shown were also originally run like the Random Lines, but were adjusted to true location on the ground, and marked with blue flagging and plain aluminum tags.

The "Temporary Corners" were marked, in accord with instructions, by a 2" x 2" x 5" post, with aluminum tag, referenced to yellow metal signs on trees. Because of the numerous cattle in the project area, a 5/8" x 30" iron rod (though not specified) was also set at each of these corners. The centers of Sections 11, 14, and 25 had to be located, in order to complete the required work in each of these sections. A "Temporary Corner", similar to the others, (though not required) was set to perpetuate the locations of these 3 section centers.

September 15, 1972

