

5061-B

CW 1/16
FD. 1" I. PIPE
& B.T'S.

N 89° 54' 30" E 1329.63'

587.20'

61.81'

60'

340.08'

7.66 Ac.

(1337.03' RECORD)

660.00'

1338.41'

N 0° 09' W

N 89° 57' E
423.92'

680.03'

N 13° 44' 20" E

340.00'

ROAD

TEK

5061-A

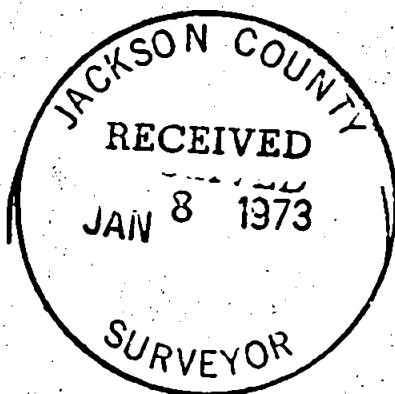
5061

Progressive Enterprises Narrative Cont.

I then run South $89^{\circ}54'30''$ West for 1,329.63 feet (record S $89^{\circ}54'W$ for 1,329.91) to the previously mentioned CW 1/16th corner.

I then run interior lines and set monument same as shown on the attached plat.

All bearings are based on Survey No. 2483, which is based upon solar observations and referred to the true meridian. This survey was executed with a T-16ED Transite Theodolite and a 200.00 foot steel chain.



5061

MEMBER
PROF. ENGINEERS OF OREGON
PROF. LAND SURVEYORS OF OREGON

TELEPHONE
503-476-7114

RICHARD L. TEMPLIN
CONSULTING ENGINEER
718 N.E. SIXTH STREET
GRANTS PASS, OREGON
97526

December 15 1972

SURVEY NARRATIVE

Location : NE 1/4 of the SW 1/4 of Section 32 Township 33 South,
Range 4 West, Jackson County, Oregon.

Surveyed For: Progressive Enterprises, Grants Pass, Oregon.

Purpose: To resurvey the exterior lines of the NE 1/4 of the SW 1/4
of Section 32 and partition into six lots of 5 acres or more.

Beginning at the CW 1/16th corner, which is monumented with a 1 inch diameter
iron pipe, per Survey C.S. # 2483, from which,

A Yew 15 inches in diam. bears N86°E., 36 lks. dist. scribe visible.

A W. Fir 11 inches in diam. bears S31°W 32 lks. dist. blaze healed.

I then run South 00°09' East for 1,338.41 feet (record 1,337.03') to the
SW 1/16th corner which is monumented with a 1 inch diam. iron pipe. per Survey
C.S. # 2483, from which,

A W. Fir 13 inches in diam. bears S85°E., 35 lks dist. blaze healed.

A W. Fir 15 inches in diam. bears N08°W., 30 lks dist. blaze healed.

I then run North 89°57' East for 1,331.57 feet (record 1,329.04) to the
CS 1/16th corner which is monumented with a 1 inch diameter iron pipe, per
Survey C.S.# 2483, which falls in a skid road and is bent over, from which,

A D. Fir 14 inches in diam. bears N25°E., 159 lks dist scribe visible
now a 6 foot high stump.

A D. Fir 24 inches in diam. bears S14°W., 25 lks. dist. scribe visible
now a 4 foot high stump.

I then run N00°14'W for 1,339.41 feet (record N00°7'W for 1,338.15 ft.) to
the Center of Section 32 which is monumented with a 1 inch diameter iron pipe
which falls under a large drift wood pile, I placed a 5/8th inch diameter iron
rod on top of this pile to delineate corner from which,

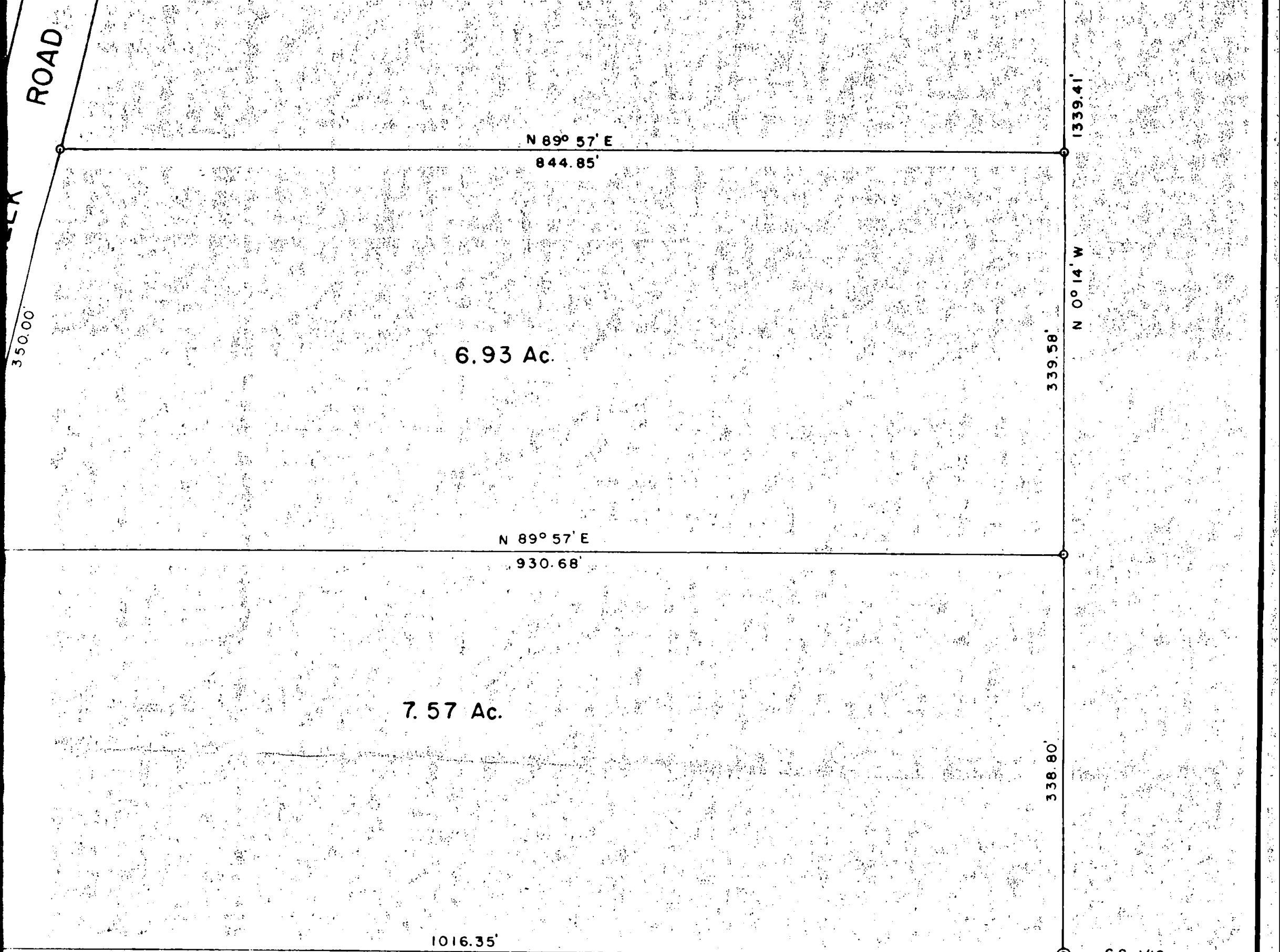
A D. Fir 9" in diam. bears N83°E., 80 lks dist. blaze healed.

A D. Fir 25" in diam. bears S11°E., 44 lks dist. blaze healed.

A D. Fir 13" in diam. bears S31°W., 25 lks. dist. blaze healed.

A D. Fir. 1" in diam. bears N87°W., 6 lks. dist. blaze healed.

(cont.)



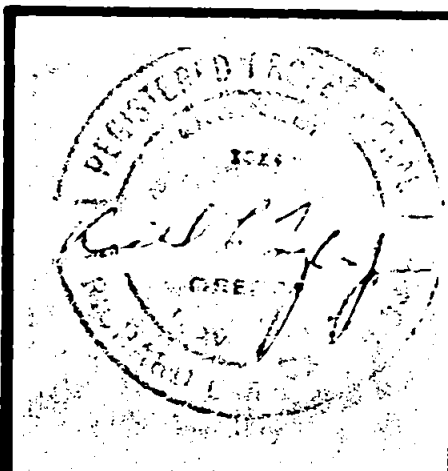
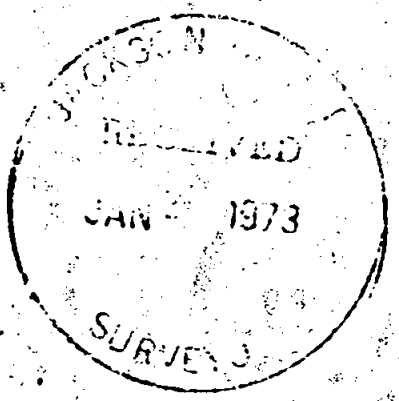
N 89° 57' E 1331.57' (1329.04 RECORD) CS 1/16
 FD. 1" I. PIPE (BENT OVER)
 & B. T. STUMPS.

5061-E

NOTE:

- INDICATES MONUMENT FOUND.
- INDICATES 5/8" I. RODS SET.

BEARINGS ARE REFERRED TO THE TRUE MERIDIAN BASED UPON SOLAR OBSERVATIONS PER SURVEY C. S. NO. 2483.



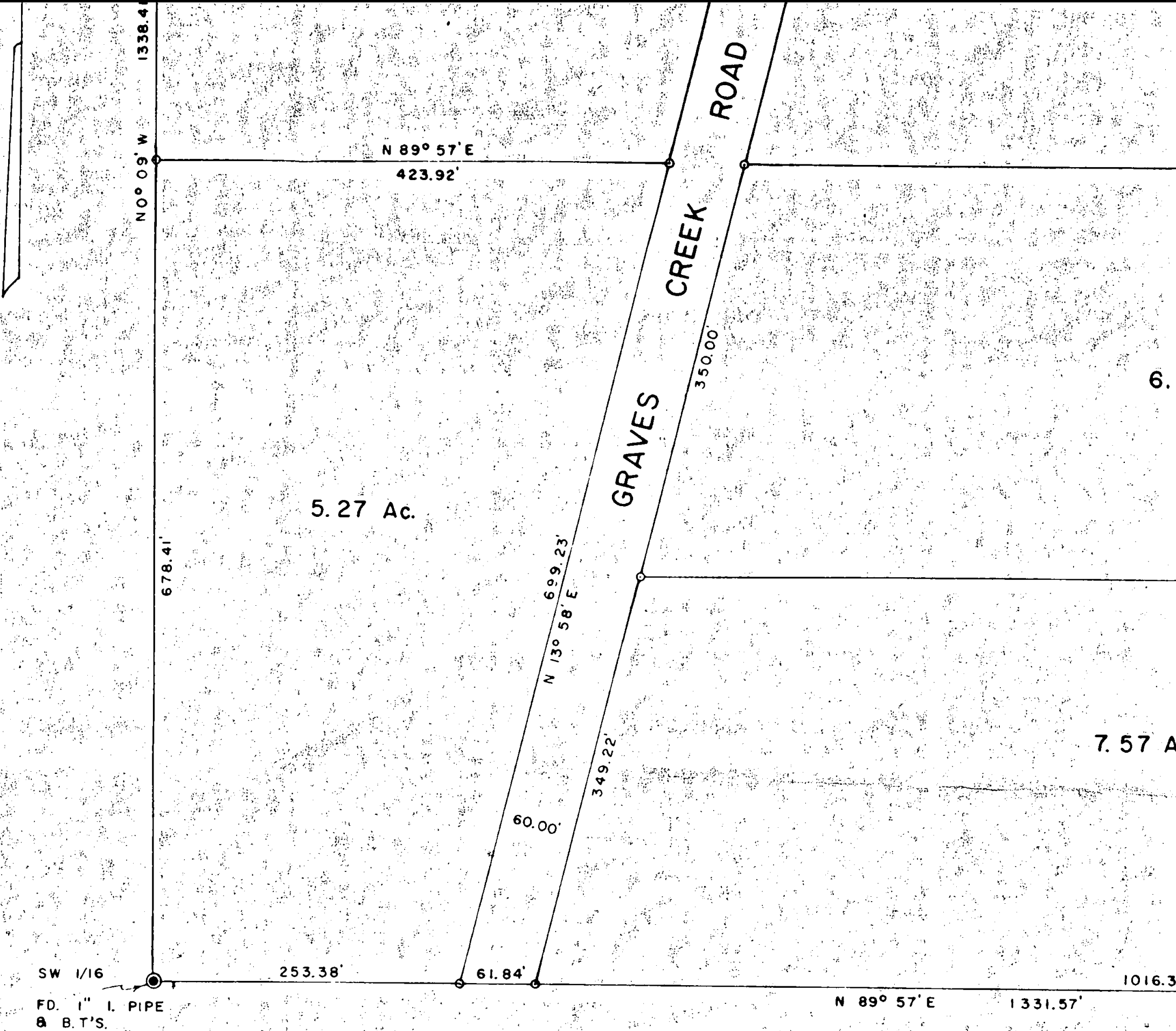
RICHARD L. TEMPLIN
 CONSULTING ENGINEER

**PLAT OF DEPENDENT SURVEY
 PROGRESSIVE ENTERPRISES PROPERTY**

LOCATED IN
 NE 1/4 OF SW 1/4 OF SECTION 32, T. 33 S., R. 4 W., W.M.
 JACKSON COUNTY, OREGON

Surveyed For: Progressive Enterprises, Grants Pass, Oregon.
 Scale: 1" = 100' December 15, 1972.

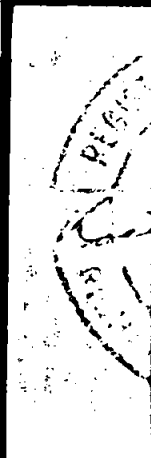
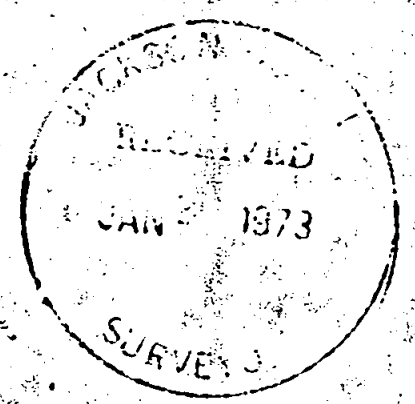
5061



5.27 Ac.

SW 1/16
FD. 1" I. PIPE
B.T.'S.

5061-D



5061-C

