

5057-A

MKD: SURVEY MON
R.L.S. 759
1 B.T.

1/4 CORNER

FD 2" G.I. PIPE
WITH 3" BR. CAP MKD
1968 R.S.W.

2 B.T.'S 8 6" x 6" x 2" STONE,
1/4" ON N. FACE ALONG SIDE PIPE

N. 00°03'45" E

19.96 CH.
TRUE LINE

317.36

2649.9
4015 CH.

S 89°56'05" W

5386.26
81.61 CH

20.33 CH.

1 B.T.
SURVEY MON
R.L.S. 759

39.78 CH.

3625.48

N. 00°11'10" W.

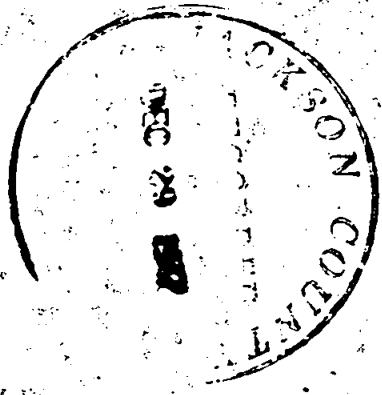
SECTION 9

SECTION 8

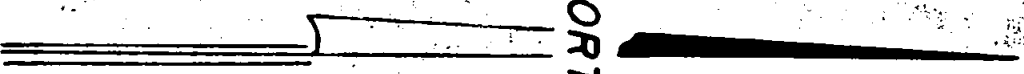
LAT 42°16'23"
LONG 123°03'40"

1/4 CORNER
FD 7" x 11" x 2" STONE
1/4" N. FACE
FIRMLY SET 8
2 B.T.'S

SECTION 16



NORTH



1/4 CORNER
FD 2" G.I. PIPE
WITH 3" BR. CA
1968 R.S.W.

3 B.T.'S

80.21 CH.
5293.90

SURVEY NO. 5057

SURVEY NARRATIVE TO COMPLY WITH PARAGRAPH 209.250
OREGON REVISED STATUTES

SURVEY FOR: Bureau of Land Management
310 West 6th Street
Medford, Oregon 97501

LOCATION: Situated in Section 9, Township 38 South, Range 3 West of the Willamette
Base and Meridian, Jackson County, Oregon.

PURPOSE: To execute a portion of a contract with the Bureau of Land Management
entitled "Property Line Surveys for the Medford, Oregon District".

PROCEDURE: This survey was executed with a Hewlett-Packard 3800A Distance Meter,
Wild T-2, Wild T-16ED, 1' Lietz Mountain Transit, 200 and 300 foot
tapes, all in good condition.

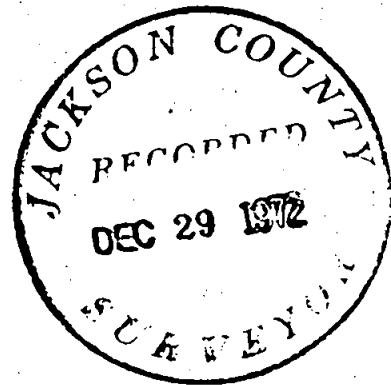
Control stations were established at various points from which the
section corners and quarter corners were tied. The property lines
were then computed from this data. The property lines were surveyed
establishing the property corners, as instructed by the Bureau of
Land Management, as shown on the accompanying map.

October 31, 1972

Everett L. Swain
Professional Land Surveyor
Ashland, Oregon

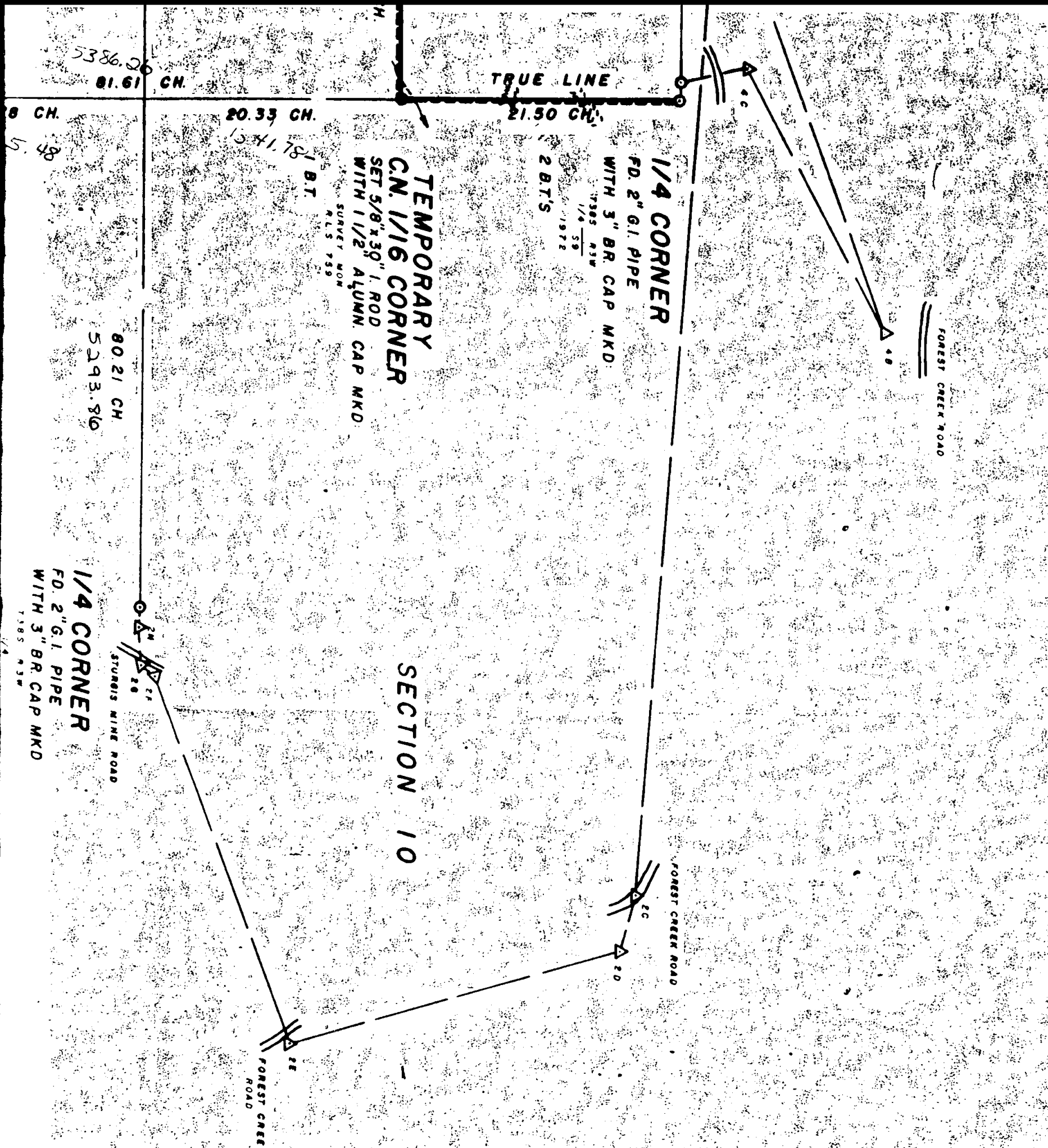
REGISTERED
PROFESSIONAL
LAND SURVEYOR

Everett L. Swain
OREGON
JULY 8, 1963
EVERETT L. SWAIN
759



Sec 9 T38 R1W

SECTION 4



NOTE

THIS SURVEY EXECUTED UNDER B.L.M.
CONTRACT NO. 53500-CT2-336(N) DATED
MAY 31, 1972

ALL SURVEY STATIONS MONUMENTED WITH
WOODEN GINNIES OR HUBS AND 2 1/4" x 1 7/8" x 3/4"
WOODEN STAKES WITH RED TOPS.

ALL TREES OVER 4" DIAM. MARKED WITH
2 1/2" ALUMINUM TAG
TRUE LINE MARKED WITH BLUE PLASTIC
RIBBON

LEGEND

- MONUMENTS FOUND
- MONUMENTS SET
- △ CONTROL STATION
- STREAMS
- INTERMITTENT STREAMS
- RIDGES

5057-D

C.N. 1/16 CORNER
 SET 5/8" x 30" I. ROD
 WITH 1/2" ALUMN. CAP MKD
 SURVEY MON
 R.L.S. 759

20.33 CH.
 15.41.78

5386.2
 81.61

39.78 CH.
 2625.48

N. 00°11'10"W.

1/4 CORNER
 7"x11" x 2 STONE
 4" N FACE
 ONLY SET B
 B.T.'S



NORTH

SECTION 16

STUBBS NINE ROAD

1/4 CORNER
 FO. 2" G.I. PIPE
 WITH 3" BR. CAP MKD
 1/4
 1985 R.S.W.

3 B.T.'S
 5/15/70
 1968

FOREST GREEN ROAD

LEGEND

- MONUMENTS FOUND
- MONUMENTS SET
- △ CONTROL STATION
- STREAMS
- INTERMITTENT STREAMS
- ~ RIDGES
- PASSABLE ROADS
- IMPASSABLE ROADS
- HEWLETT-PACKARD CONTROL LINES
- CONTROL LINES
- TRUE LINES

CERTIFICATION
 I, EVERETT L. SWAIN, ORE R.L.S. NO 759, HEREBY CERTIFY
 THAT THIS PLAT IS CONFORMABLE TO THE FIELD NOTES AND THE
 SURVEY HAS BEEN CORRECTLY EXECUTED WITHIN THE REQUIREMENTS
 AND REGULATIONS OF THE BUREAU OF LAND MANAGEMENT

Everett L. Swain

REGISTERED
 PROFESSIONAL
 LAND SURVEYOR
 OREGON
 JULY 9, 1966
 EVERETT L. SWAIN
 753

EVERETT L. SWAIN
 REGISTERED PROFESSIONAL LAND SURVEYOR
 PLAT OF PRELIMINARY RESURVEY
 A PORTION OF SECTION 9

T 38S, R 3W, W.M.
 JACKSON COUNTY, OREGON
 Surveyed for: Bureau of Land Management, Medford, Oregon
 Scale: 1" = 660'
 October 31, 1972

5057

5057-C

5057-B

SECTION 4

SECTION CORNER
FD. 2" G.I. PIPE
WITH 3" BR. CAP MKD.
7585 R3W

3 B.T.'S & 6"x6"x2" STONE
4 NOTCHES E. FACE & 5
NOTCHES S. FACE BEARS
SOUTH 0.25'

5/4
8/9

N. 00°03'45"E
0.005 CH.

1/4 CORNER
FD. 2" G.I. PIPE
WITH 3" BR. CAP MKD.
7585 R3W
1/4 S4

5 B.T.'S
1968

TRUE LINE

1/4 CORNER
FD. 2" G.I. PIPE
WITH 3" BR. CAP MKD.
7585 R3W
1/4 S9

2 B.T.'S
1972

21.50 CH.

TEMPORARY
CN. 1/16 CORNER
SET 5/8"x30" I. ROD
WITH 1/2" ALUMN. CAP MKD.
SURVEY MON
R.L.S. 759

1 B.T.
1972

20.33 CH.

541.78

8021 CH
5293.80

1/4 CORNER
FD. 2" G.I. PIPE
WITH 3" BR. CAP MKD.
7585 R3W
1/4 S10

3 B.T.'S
1980

TEMPORARY
N. 1/16 CORNER
SET 5/8"x30" I. ROD
WITH 1/2" ALUMN. CAP
MKD. SURVEY MON
R.L.S. 759

1 B.T.
1968

N. 00°03'45"E

42.23 CH.
2787.18

22.27 CH.

1469.82

19.96 CH.
TRUE LINE

1317.36

N. 89°24'35"E
TRUE LINE

4007 CH.

S. 89°05'05" W

4015 CH.
5149.9

5386.06
81.61 CH.

39.78 CH.

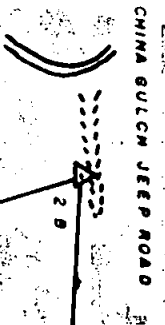
625.48

1/4 CORNER
FD. 2" G.I. PIPE
WITH 3" BR. CAP MKD.
7585 R3W
1/4 S10

3 B.T.'S
1980

1/4 CORNER
FD. 2" G.I. PIPE
WITH 3" BR. CAP MKD.
7585 R3W
S4 S9
1968

2 B.T.'S & 6"x6"x2" STONE
1/4" ON N. FACE ALONG SIDE PIPE



FOREST CREEK ROAD

