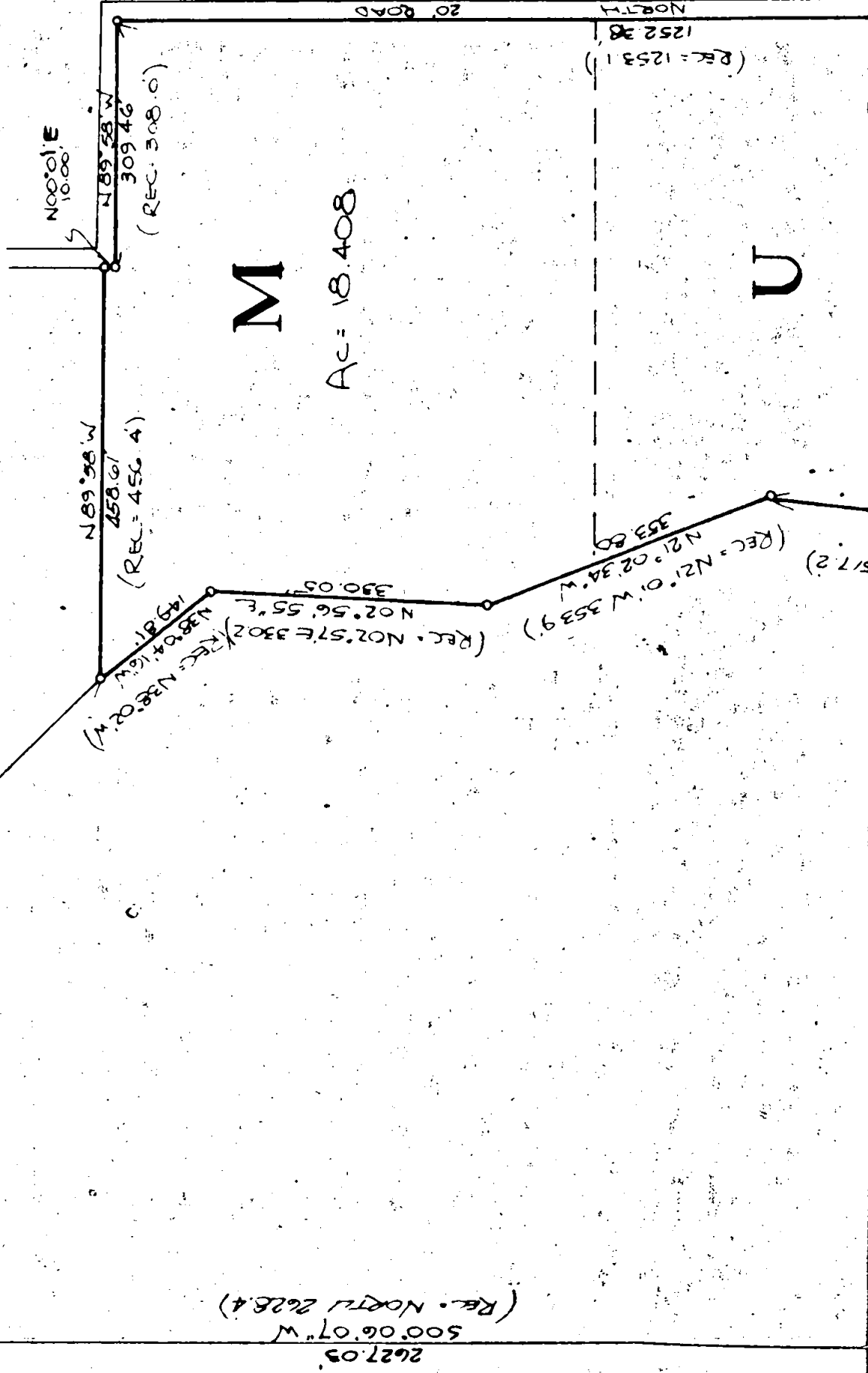


5033-A

5033

GAS PIPE
MONUMENT
N.W. COR SNOWY BUTTE
ORCHARDS SUBDIVISION

$S43^{\circ}32'40''E$
1845.611



SURVEY NARRATIVE TO COMPLY WITH PARAGRAPH 209.250 O. R. S.

SURVEY FOR: Louis D. Farnsworth, Jr.
2450 Malabar Drive
Eugene, Oregon

LOCATION: Lots M & U, Snowy Butte Orchards Subdivision, Township
37 South, Range 2 West of the Willamette Meridian,
Jackson County, Oregon.

PURPOSE: To survey and monument the above described lots.

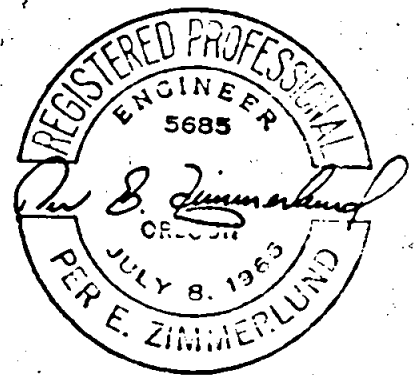
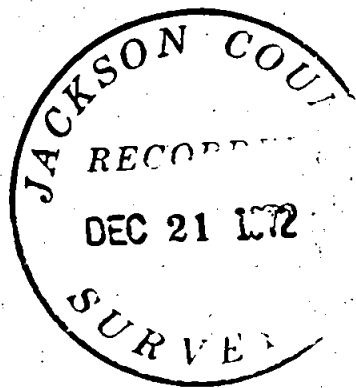
PROCEDURE: Found gas pipe monumenting the Southeast corner of
Snowy Butte Orchards Subdivision; thence I run North
 $89^{\circ}54'$ West, record bearing, 4951.30 feet, recorded
distance being 4950.00', to the Southwest corner of
said subdivision, which is monumented with a gas pipe.

Thence I run North $00^{\circ}06'07''$ East 2627.03 feet, record
bearing & distance being North 2628.4 feet, to a gas
pipe monumenting the Northwest corner of said sub-
division.

It should be noted at this point that when closing the
eastings, the adjusted survey closed with a distance
being 3.25 feet longer than the distance shown on the
original plat. A mathematical closure of Lots M & U
of said original plat was then attempted, and it was
found that the eastings did not close by 3.25 feet.

As the distance of the South line of said subdivision
checks closely with record distance, as does the South
line of Lot U, it was my opinion that the error was in
the North line of Lot M.

I then set pins on the North line of Lot M by single
proportionate measurement as shown on plat.

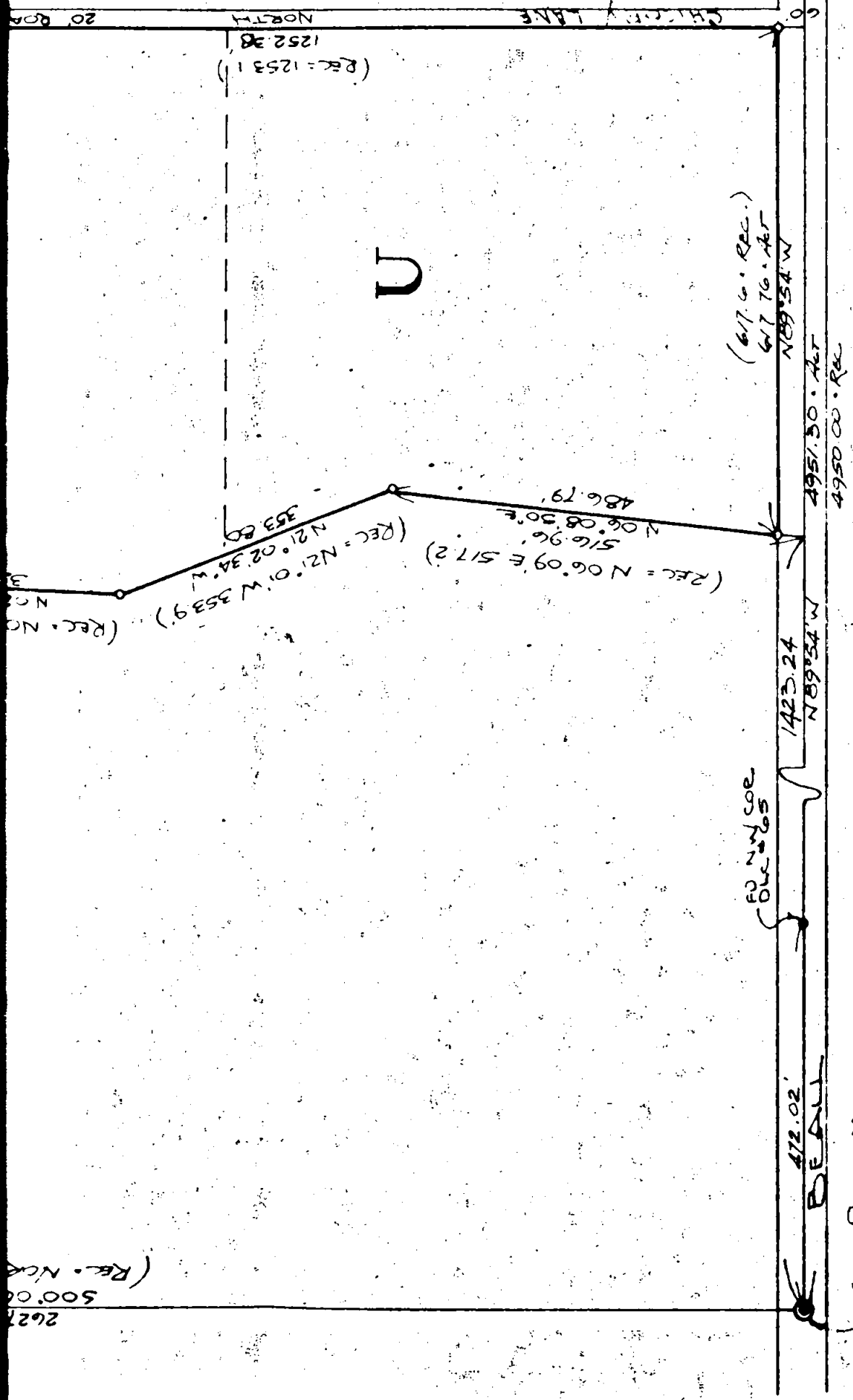


December 15, 1972

SCALE: 1"=200'

BASIS OF BEARING:
SOUTH LINE SNOWY
BUTTE ORCHARDS SUB
O = 5/8" X 30" IRON ROD SET
● = MONUMENT FOUND

GAS PIPE MONUMENT
S.E. CORNER SNOWY
BUTTE ORCHARDS
SUBDIVISION



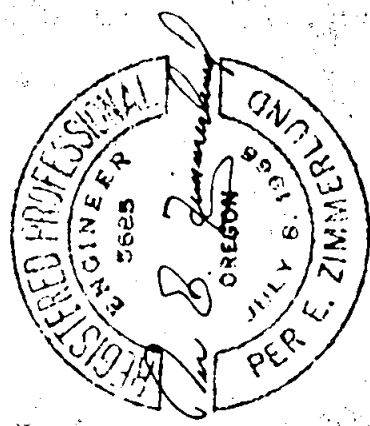
BEALL

LANE

GAS PIPE MONUMENT
S.W. CORNER SNOWY
BUTTE ORCHARDS
SUBDIVISION

SURVEY
LOTS M & U SNOWY
BUTTE ORCHARDS SUB.,
LOCATED IN T. 37 S., R. 2 W.,
W. M., JACKSON COUNTY, ORE.

FOR
LOUIS D. FARNSWORTH JR.,
2480 MALABAR DRIVE, EUGENE,
OREGON



ATTIG AND ZIMMERLUND
CONSULTING ENGINEERS
ROGUE RIVER, OREGON
DECEMBER, 1972 W.O.#226

