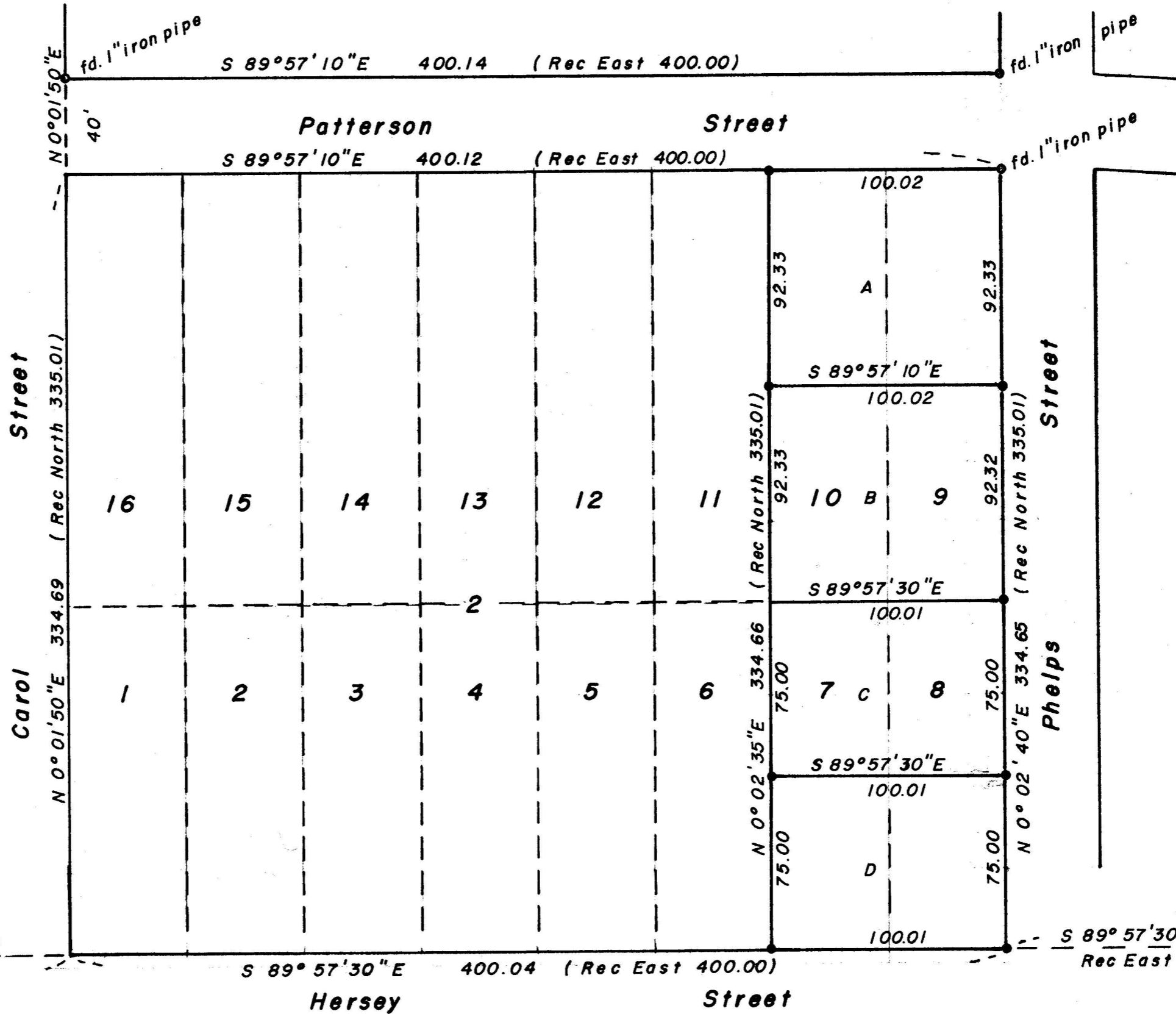




SCALE 1"=50'

Basis of bearings: True bearing from sta. "TALENT" corrected 0° 01' 50" C.W. for convergency

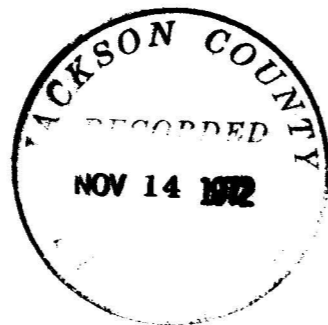
- = Set 5/8" x 30" iron pin tagged R.L.S. 638
- = Found monument as shown



S.W. Cor. D.L.C. No. 41, T39S, R1E  
Fd. 1" iron pipe w/21/2" dia. br disc

Initial point Patterson - Phelps Tracts  
Found 2" iron pipe 12" deep

S.E. Cor. D.L.C. No. 41, T39S, R1E  
Established from city references on M.H. rim



REGISTERED  
PROFESSIONAL  
LAND SURVEYOR

*George Burrell*

OREGON  
JUL 10, 1964  
GEORGE B. BURRELL  
638

### Map of Survey

Located in lots 7, 8, 9 & 10, Blk 2 of Patterson - Phelps Tracts in the city of Ashland, Ore.  
For: MRS. RAIKKO ASHLAND, ORE.  
By: George Burrell Surveyor Oct. 1972

## SURVEY NARRATIVE TO COMPLY WITH O.R.S. 209.250

FOR: Mrs. Raikko  
332 Patterson  
Ashland, Oregon

PURPOSE: To monument and describe the four tracts partitioned from Lots 7,8,9 and 10, BLOCK 2 of PATTERSON-PHELPS TRACTS.

PROCEDURE: The South line of D.L.C. No. 41 was established as shown on the accompanying map, from which the initial point and other Block Corner Monuments of said tracts were found and tied to.  
The Southeast and Southwest Corners of BLOCK 2 was established according to proportional measurement along the South line of D.L.C. 41 between the initial point of said tracts and the Southeast Corner of D.L.C. No. 41.  
The West line of Lots 7 and 10 were established on a proportional basis as shown on the accompanying map. The boundaries of the four tracts created by this survey were located according to clients direction.

REGISTERED  
PROFESSIONAL  
LAND SURVEYOR

*George Burrell*

OREGON  
JULY 10, 1964  
GEORGE R. BURRELL  
638

