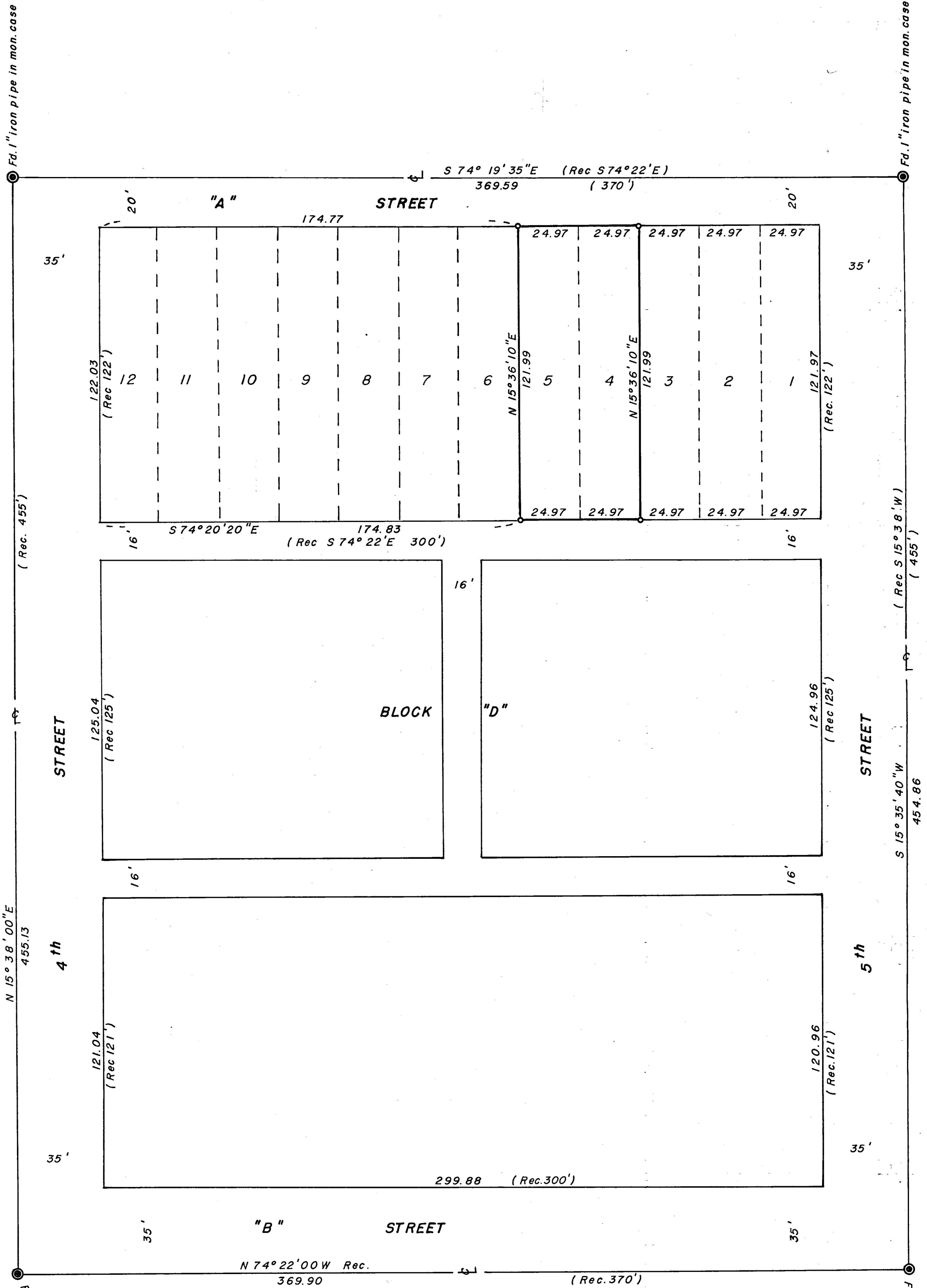
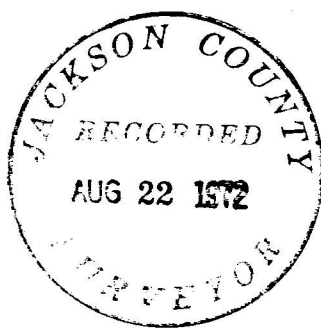


SCALE 1"=30'



Basis of Bearings Plat Record

- = Set 5/8" x 30" iron pin tagged R.L.S. 638
- = Found monument as shown



REGISTERED PROFESSIONAL LAND SURVEYOR

George Burrell

OREGON JULY 10, 1964 GEORGE R. BURRELL 638

Boundary Survey

of lots 4 and 5, Block "D" of the Railroad Addition to the City of Ashland, Jackson County, Oregon in the N.E. 1/4 of Section 9, Township 39 S, R1E, W.M. For: K.L. NICHOLS PHOENIX, OREGON By: George Burrell Surveyor Aug. 1972

4937

SURVEY NARRATIVE TO COMPLY WITH O.R.S. 209.250

FOR: K.L. NICHOLS
6713 Coleman Crk. Rd.
Phoenix, Oregon

PURPOSE: To monument Lots 4 and 5, Block "D" of the RAILROAD
ADDITION to Ashland, Oregon.

PROCEDURE: Block "D" was traversed along the street centerlines
between the controlling monuments.
From this traverse the actual dimensions of Block "D"
was computed.
Allowing record width for streets and alleys, the lots
were established proportionately as indicated on the
accompanying map.
Lots 4 and 5 were then monumented accordingly.

