

-4863

Survey For:

WILLIAM MORGAN

Located in the NW 1/4
of Sec. 5, T. 36 S. R. 1 E., W.M.

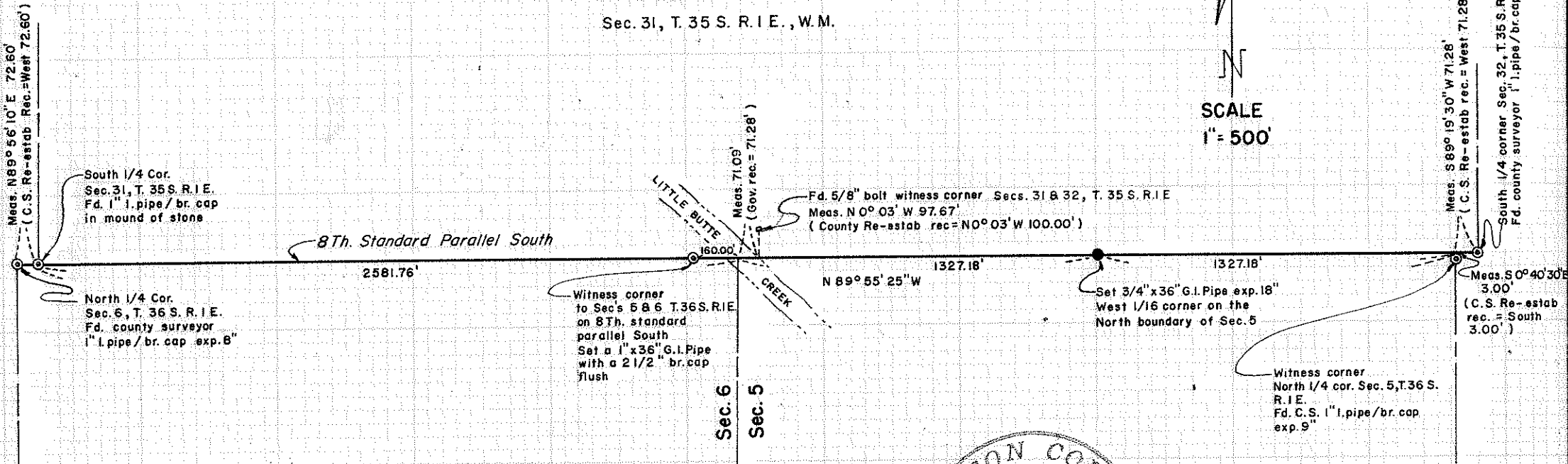
By: Mark E. Boyden

May 22, 1972

LEGEND

Basis of Bearings
Mean of 8 solar observations
taken near the South 1/4 cor.
Sec. 31, T. 35 S. R. 1 E., W.M.

SCALE
1" = 500'



JACKSON COUNTY
RECORDED
MAY 22 1972

REGISTERED
PROFESSIONAL
LAND SURVEYOR
Mark E. Boyden
OREGON
NOV. 9, 1951
MARK E. BOYDEN
281

-4863

SURVEY NARRATIVE TO COMPLY WITH O.R.S. 209.250.

FOR: William Morgan
P.O. Box 272
Eagle Point, Oregon 97524

PURPOSE: To determine the position of the Northwest corner of Section 5 and the West one-sixteenth corner on the North boundary of said Section 5, T36SR1E, W. M. and appropriately monument and reference same.

PROCEDURE: Utilizing the T-2 theodolite, the H. P. 3800-A distance meter and chain, tied to monuments as shown on the map to accompany this report. From said data, computed the positions of the desired corners by single proportionate measurement between the North Quarter corner of Sections 6 and 5 and on the Eighth Standard Parallel, monumented and referenced the desired corners as follows:

The corner common to Sections 5 and 6 on the Eighth Standard Parallel falls in Little Butte Creek. At a point on the Eighth Standard Parallel, North 89° 55' 25" West 160.00 feet from said true corner, set a 1" x 36" galvanized iron pipe, 36" in the ground with a 2 1/2" bronze cap stamped:

T36SR1E
Witness Cor.
•
to Cor. Secs.
5 & 6 RS 281
1972

For Witness Corner, from which:

The Northerly limb of a 27" twin White Oak, scribed "WC-BT" bears N 89° 55' W, 377.9 feet to the face of the lower blaze.

A 48" Black Oak, scribed "WC-BT" bears N 28° 08' W, 27.0 feet to the face of the lower blaze.

At the West one-sixteenth corner on the North boundary of Section 5, set a 3/4" x 36" galvanized iron pipe, 18" in the ground in a mound of stone, from which:

Set a nail with shiner in the Southeasterly side of a 24" White Oak which bears N 47° 14' E, 82.18 feet;

Set a nail with shiner in the Southwesterly side of a 24" White Oak which bears N 46° 39' W, 87.66 feet.

May 22, 1972

