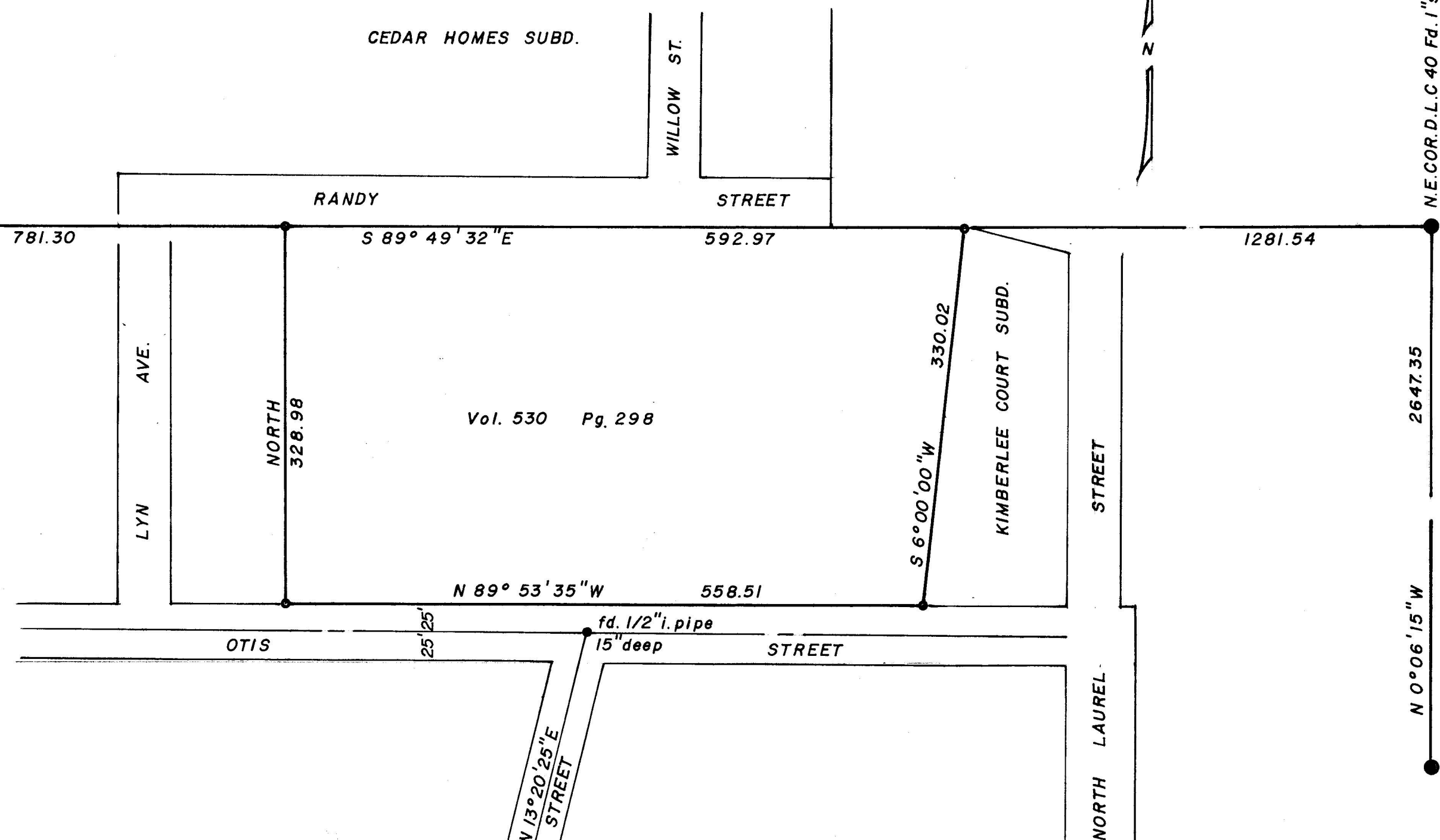


N.W.COR. D.L.C. 40 Fd. 1" iron pipe

N.E.COR. D.L.C. 40 Fd. 1" sq. iron pin in rock md. 15" deep, (replaced pin with a 2" X 30" G.I. pipe w/ 3" dia. brass cap set in conc.



Vol. 530 Pg. 298

SCALE 1" = 100'

Bearings from sta. "TALENT" corrected 0° 01' 30" C.W. for convergency

- = Set 5/8" X 30" iron pin tagged R.L.S. 638
- = Fd. monument as noted



REGISTERED PROFESSIONAL LAND SURVEYOR

George Burrell

OREGON JULY 10, 1964 GEORGE R. BURRELL 638

MAP OF SURVEY

Located in D.L.C. No. 40, T.39 S, R1E, W.M.
For: AILI EGGERT ASHLAND, OREGON
By: Geo. Burrell Surveyor April 1972

This 1 inch pipe monument at the present time has been destroyed by street construction of Orange Street.

From the corners of the tract monumented by this survey the following monuments were found:

From the Northwest corner a 2 inch iron pipe (initial point for Cedar Homes Subdivision) bears North 89° 42' 39" West 145.45 feet. From the Southwest corner a 5/8 inch iron pin on the West line of Lyn Street bears North 89° 59' 13" West 145.57 feet. From the Northeast corner a 2 inch iron pipe (initial point for Kimberlee Court Subdivision), bears North 40° 24' 00" West 0.71 feet. From the Southeast corner a 3/4 inch iron pipe bears North 0.29 feet.

REGISTERED
PROFESSIONAL
LAND SURVEYOR

George Burrell

OREGON
JULY 10, 1964
GEORGE R. BURRELL
638

JACKSON COUNTY
RECORDED
APR 6 1972
SURVEYOR

SURVEY NARRATIVE TO COMPLY WITH O.R.S. 209.250
REVISED BY CHAPTER 555, O.L. 1963

FOR: Aili Eggert
2225 H Street
Eureka, Calif. 95501

PURPOSE: To monument the corners of the tract described in Volume 530, Page 298 of the Deed Records of Jackson County, Oregon.

PROCEDURE: Coordinate positions of all corners found as well as control for corner set by this survey were obtained by electronic distance measuring equipment. At the Northeast corner of D.L.C., No. 40 a 1 inch square iron pin was found (in a rock mound 15 inches below the ground surface). The record of this monument may be found in McCALL'S FIELD BOOK "A", Pages 76 through 79, dated 1888, at the City of Ashland Engineers Office. I replaced the 1 inch square iron pin with a 2 inch by 30 inch galvanized iron pipe with a 3 inch diameter brass cap attached (stamped N.E. COR., D.L.C. NO. 40 T39S R1E R.S. 638 1972) set in concrete with the brass cap exposed 7 inches above the concrete. A 4"x4" wood post painted red and white was placed alongside exposed 24 inches. From this pipe monument set: A 2 inch iron pipe exposed 4 inches and used previously by others for the N.E. corner of D.L.C., No. 40, bears North 67° 10' 20" West 2.40 feet; A 1 inch square iron pin found in the center of Oak Street bears South 89° 53' 07" East 454.28 feet; A 3/4 inch iron pipe found in an East-West and North fence line bears North 89° 44' 15" East 129.81 feet. At the Northwest corner of D.L.C., No. 40 a 1 inch diameter iron pipe was found. A coordinate analysis of McCall's stone monuments along the West line of the D.L.C. indicate that this pipe is nearly on line with a line projected through said monuments and within 1 foot for distance measured from a stone monument found at Coolidge Street. A search was made within a 2 foot radius and 24 inches below the present 1 inch pipe found for McCall's 1 inch square pin set in 1888 with negative results. Since this pipe appears to be within a position that does not disagree with the 1888 record by more than 1 foot, it was concluded to be the true Northwest corner of D.L.C., No. 40 and was used as such by this survey. The property corners of the tract monumented by this survey were then established according to Deed Record. Centerline control for Otis Street was established as follows: from the only available monument on Otis Street (found at the centerline of Otis and Willow Streets) the record angle was turned to establish the centerline of Otis Street. The bearing of Willow Street was computed from a coordinate position of the 1 inch iron pipe, found previously at the centerline of Orange Street.