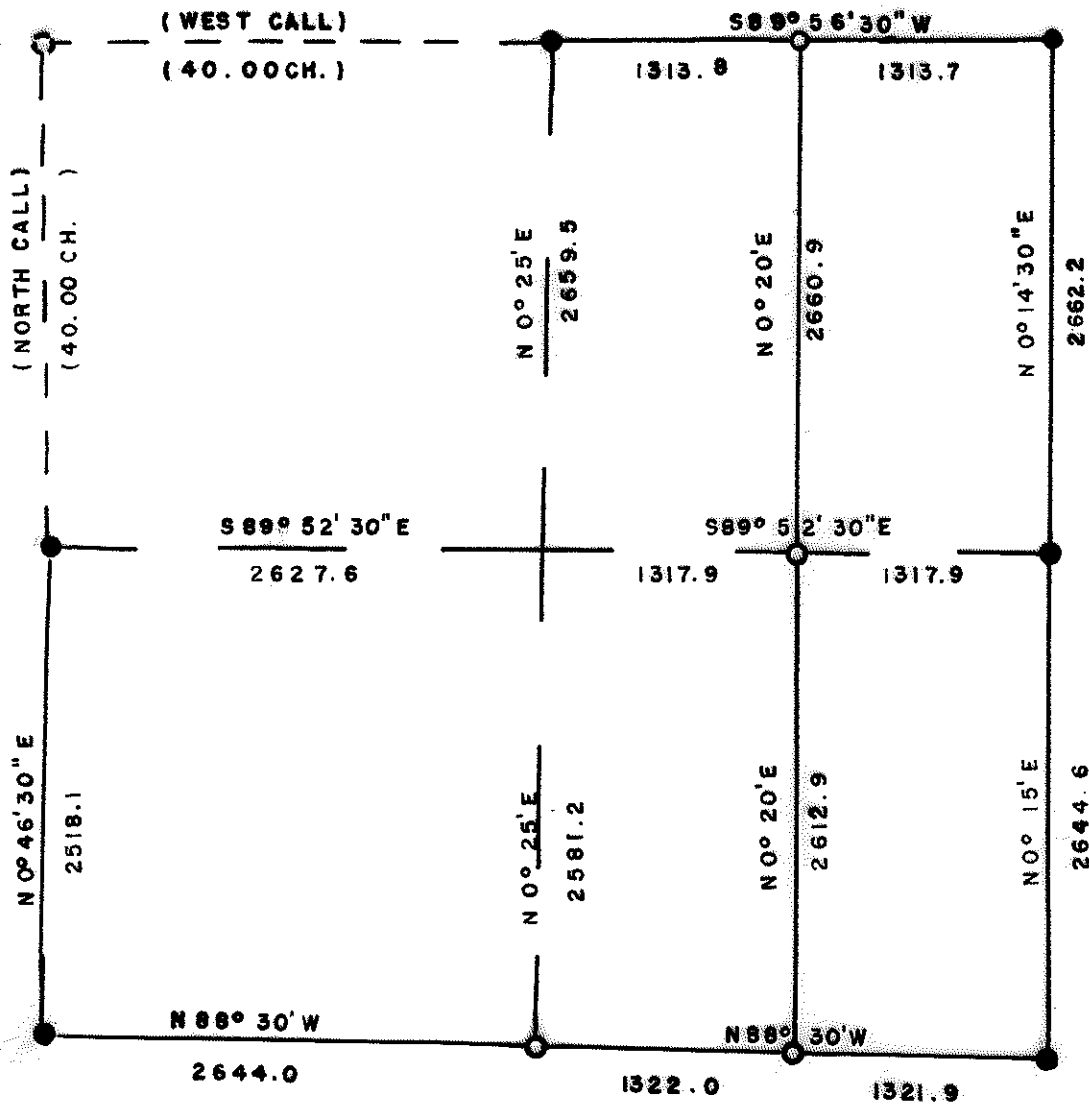


4819

6187

SECTION PLAT
Sec. 15 T 36S R 3E W.M.



REGISTERED
PROFESSIONAL
LAND SURVEYOR
Duane A. Smeltzer
OREGON
OCTOBER 24, 1958
DUANE A. SMELTZER
461

BRASS CAP ●
ALUM. CAP ○
SCALE 1" = 1000'
DATE 2-72

4819

SECTION 15, TOWNSHIP 36SOUTH, RANGE 3 EAST, WILLAMETTE

MERIDIAN.

NARRATIVE: For Medford Corporation, To monument and mark boundaries of MEDCO property.

Began survey 2-72. Found following evidence;

NE corner	US Brass Cap, bearing trees, original location.
N $\frac{1}{4}$ "	" "
W $\frac{1}{4}$ "	" "
SW "	" "
SE "	" "
E $\frac{1}{4}$ "	" "
NW "	Evidence found.

Ran transit and chain closed traverse (solar bearings) surey along east half of North Line to N $\frac{1}{4}$ corner, thence south and west to W $\frac{1}{4}$ corner, thence south to SW corner, thence east to SE corner, thence north to E $\frac{1}{4}$ corner, thence north to NE corner.

NORTH LINE: Bearing East half of line; S89°56'30"W.
 0.0 feet NE corner.
 1313.7 " Set 5/8"x30" rebar, Aluminum cap.
 Scribed E 1/16 S10 RS 461 BT.
 18" D. Fir N25°W 34.3'.
 " E 1/16 S15 RS 461 BT.
 12" D. Fir S28°E 9.6'.
 2627.5 " N $\frac{1}{4}$ corner, Brass cap, BLM.

WEST LINE: Bearing South half of line, S0°46'30"W.
 0.0 feet W $\frac{1}{4}$ corner, BLM Brass cap.
 2518.1 " SW corner, BLM Brass cap.

SOUTH LINE: Bearing S88°30'E.
 0.0 feet SW corner, BLM Brass cap.
 2644.0 " S $\frac{1}{4}$ corner. Set 5/8"x30" rebar, Alum. cap, (single proportion).
 Scribed $\frac{1}{4}$ S15 RS 461 BT.
 11" D. Fir N6°E 17.9'.
 Scribed $\frac{1}{4}$ S22 RS 461 BT.
 16" S. Pine S15°W 14.5'.
 3966.0 " E 1/16 S15/S22. Set 5/8"x30" rebar, Al. cap.
 Scribed E 1/16 S15 RS 461 BT.
 9" D. Fir N9°W 27.7'.
 Scribed E 1/16 S22 RS 461 BT.
 9" W. Fir S5°E 30.9'.
 5287.9 " SE corner, BLM Brass cap.

EAST LINE: Bearing SE corner to E $\frac{1}{4}$ corner; N0°15'E.
 0.0 feet SE corner.
 2644.6 " E $\frac{1}{4}$ corner, BLM Brass cap.
 Bearing E $\frac{1}{4}$ corner to NE corner, N0°14'30"E.
 5306.8 feet NE corner, BLM Brass cap.

N-S CENTER LINE: Bearing S0°25'W.

0.0 feet N $\frac{1}{4}$ corner.
 2659.5 " C $\frac{1}{4}$ corner (calculated)
 5240.7 " S $\frac{1}{4}$ corner.

E-W CENTER LINE: Bearing S89°52'30"E.

0.0 feet W $\frac{1}{4}$ corner.
 2627.6 " C $\frac{1}{4}$ corner (calculated)
 3945.5 " CE 1/16 corner, Set rebar, Al. cap. Scribed
 CE 1/16 S15 RS 461 BT, 9" D. Fir S36°E 34.1',
 12" W. Fir S38°W 8.5'.
 5263.4 " E $\frac{1}{4}$ corner.

Beginning at E 1/16 S10/S15, ran S0°20'W 2660.9' to CE 1/16 corner, thence ran S0°20'W 2612.9' to E 1/16 S15/S22.

