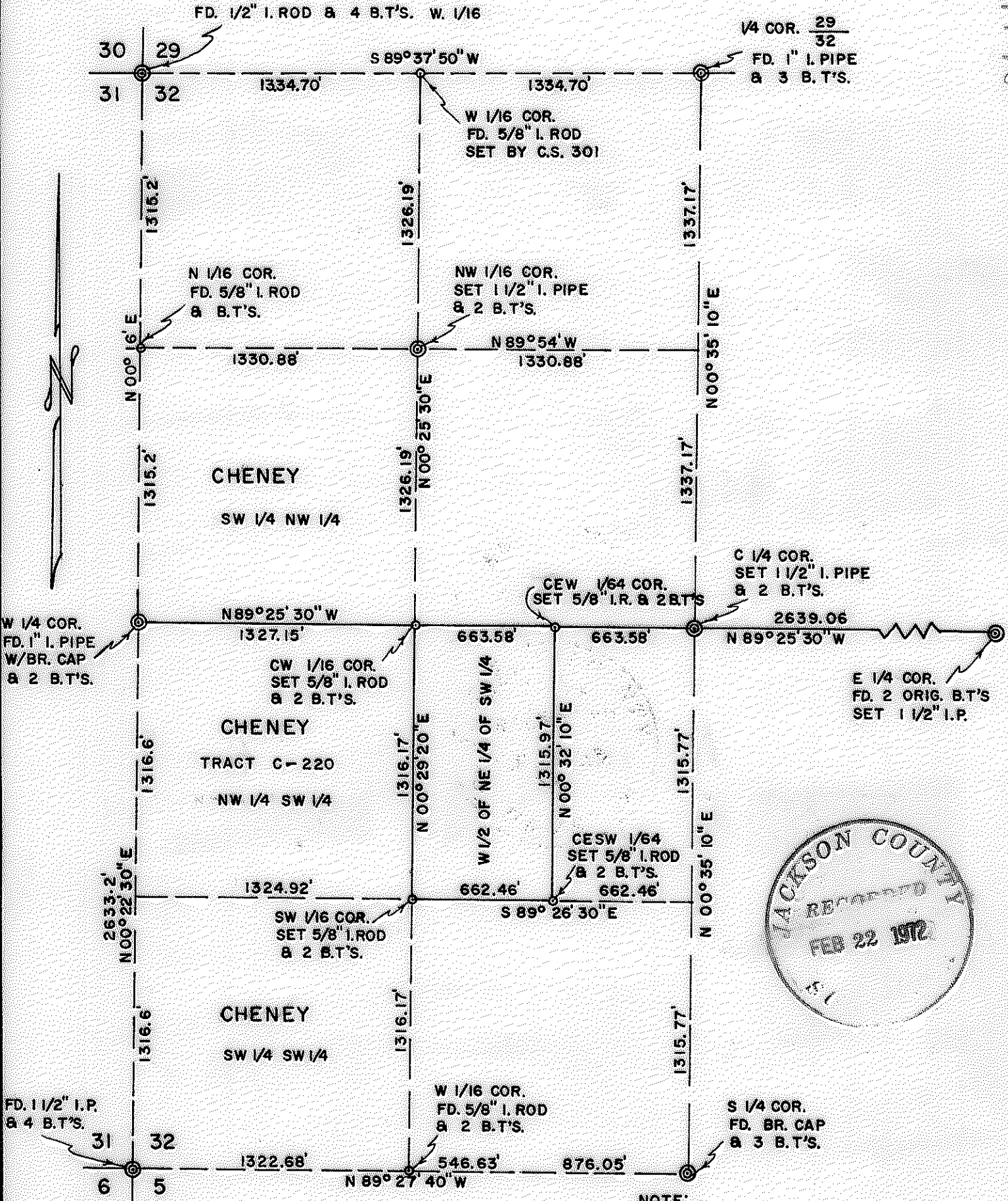
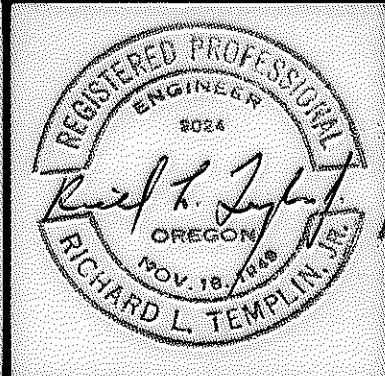


4798

4798
8617



NOTE:
ALL BEARINGS REFERRED TO SURVEY NO. 2904 WHICH ARE BASED ON SOLAR OBSERVATIONS.



RICHARD L. TEMPLIN
CONSULTING ENGINEER

PLAT OF DEPENDENT RESURVEY
W 1/2 OF NE 1/4 OF SW 1/4
SECTION 32, T. 39 S., R. 2 W., W. M.
JACKSON COUNTY, OREGON.

Surveyed For: Cheney Forest Products, Central Point, Oregon.
Scale: 1" = 600'

February 16, 1972. 4798

SURVEY NARRATIVE

Location: The Subdivision of Section 32, T. 39S., R.2W. of the W. M., Jackson County, Oregon.

Surveyed For: Cheney Forest Products, Central Point, Oregon.

Surveyed by: Richard L. Templin, Reg. Eng. No. 3024, Grants Pass, Oregon

Purpose: To subdivide and monument the West half of Section 32 and monument the $\frac{1}{2}$ of the $\text{NE}\frac{1}{4}$ of the $\text{SW}\frac{1}{4}$ of Section 32.

Using survey data as shown on my survey of Section 32 dated February 7, 1971 and also survey data from recorded survey No. 2904 by L.S. 301, I then run a traverse survey from the West one quarter corner to the East one quarter corner using a Hewlett Packard Model 3800 electronic measuring instrument in combination with a Wild T-2 theodolite. After completion of the traverse the following subdivisional corners were calculated and monumented as follows:

Commencing at the Quarter Corner common to Sections 32 and 31 which is monumented with a 1 inch diam. iron pipe with Jackson County Surveyor brass cap set in 1970, located in the center of a small creek flowing easterly from which:

An original B.T., A D. Fir 42" in diam. bears $\text{N}46^{\circ}\text{W}$, 122 lks distant with scribing visible.

A Madrone, approx. 20" in diam. bears $\text{N}36^{\circ}\text{E}$, 124 lks, distant with oblit. face and broken off six feet above the ground.

A new County Surveyor B.T., A D. Fir 9" in diam. bears $\text{N}65^{\circ}\text{E}$, 37.4 feet distant with scribing visible.

A new County Surveyor B.T., A D. Fir 16" in diam. bears $\text{N}44^{\circ}\text{W}$, 30.7 feet distant with scribing visible.

Thence $\text{S}89^{\circ}25'30''\text{E}$ for 1327.15 feet to the $\text{CW}1/16^{\text{th}}$ corner which I monument with an iron rod $\frac{5}{8}^{\text{th}}$ inch in diam. and 30 ins. in length from which:

A I. Cedar 23" in diam. bears $\text{N}85^{\circ}\text{W}$, 23.0 feet dist. marked $\text{CW}1/16$ R.E. 3024 B.T.

A D. Fir 11" in diam. bears $\text{S}14^{\circ}\text{E}$, 19.4 feet distant marked $\text{CW}1/16$ R.E. 3024 B.T.

Thence continue $\text{S}89^{\circ}25'30''\text{E}$ for 663.58 feet to the $\text{CEW}1/64^{\text{th}}$ corner which I monument with an iron rod $\frac{5}{8}^{\text{th}}$ inch in diam. and 30 ins. in length from which

A D. Fir 7" in diam. bears $\text{N}33^{\circ}\text{W}$, 5.1 feet dist. marked $\text{CEW}1/64$ RE 3024 BT

A D. Fir 14" in diam. bears $\text{S}73^{\circ}\text{E}$, 24.7 feet dist. marked $\text{CEW}1/64$ RE 3024 B.T.

Thence I continue $\text{S}89^{\circ}25'30''\text{E}$ for 663.58 feet to the center quarter corner which I monument with a $\frac{1}{2}$ inch diam. iron pipe 30 ins. in length from which:

A Ponderosa Pine 9" in diam. bears $\text{S}66^{\circ}\text{E}$, 14.2 feet dist. marked $\text{C}\frac{1}{4}$ RE 3024 BT.

A D. Fir 10" in diam. bears $\text{N}42^{\circ}\text{W}$, 20.3 feet dist. marked $\text{C}\frac{1}{4}$ RE 3024 BT.

(Section 32 - 39- 2W)

Thence I continue S 89°25'30"E for 2639.06 feet to the East 1/4 corner of Section 32 at which point I set a 1 1/2" diam. iron pipe 30" in length determined from the two original bearing trees, which bear:

A W. Oak 16" in diam. bears N65 1/2°E., 81 lks distant blaze healed.

A W. Oak 14" in diam. bears N17°W., 91 lks distant with scribing "BT" under approx. 100 years overgrowth.

I take a new B.T. A Ponderosa Pine 14" in diam. bears S66°W., 30.1 feet distant marked 1/5 32 RE 3024 BT.

I then return to the before mentioned CEW 1/64th corner and run S00°32'10"W., for 1315.97 feet to the CESW 1/64th corner which I monument with a 5/8th inch diam. iron rod 30 ins. in length from which:

A D. Fir 7" in diam. bears N63°E., 6.8 feet dist. marked SWE 1/64th RE 3024 BT.

A D. Fir 5" in diam. bears S14°E., 19.4 feet dist. marked SWE 1/64 RE 3024 BT.

Thence N89°26'30"W for 662.46 feet to the SW 1/16th corner which I monument with a iron rod 5/8th inch in diam. and 30 ins. in length, from which:

A D. Fir 12" in diam. bears S18°E., 33.9 feet dist marked SW 1/16 RE 3034 BT.

A D. Fir 8" in diam. bears West, 16.9 feet dist. marked SW 1/16 RE 3024 BT.

Thence N00°29'20"E for 1316.17 feet to the previously mentioned CW 1/16th corner.

Thence N00°25'30"E for 1326.19 feet to the NW 1/16th corner which I monument with a 1 1/2 inch diam. iron pipe 30 ins. in length from which:

A D. Fir 9" in diam. bears N76°E., 15.4 feet dist. marked NW 1/16 RE 3024 BT.

A W. Oak 8" in diam. bears S28°E., 44.0 feet dist. marked NW 1/16 RE 3024 BT.

Thence I continue N00°25'30"E. on a blank line for 1326.19 feet to the W 1/16th corner at which point I find a 5/8th inch diam. iron rod set by L.S. 301 per Survey No. C.S. 2904.

All bearings are referred to Survey No. 2904 which are based on Solar Observations.

A T-16 Theodolite and 200.00 foot steel tape were also used on this survey.

Dated this 15th day of February, 1972

