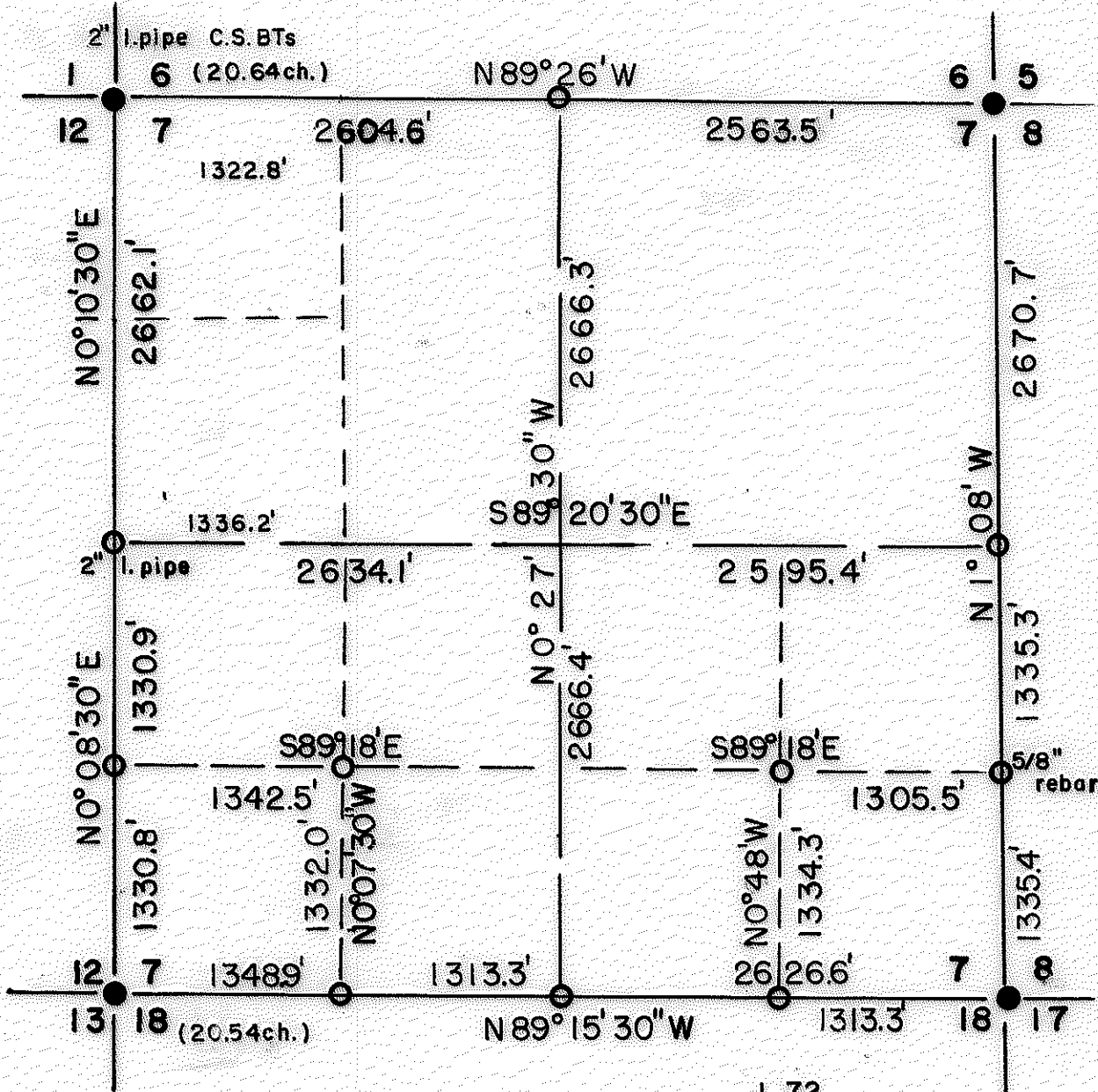


4766

4766

# SECTION PLAT

## S.7, T.34S., R.2E., W.M.

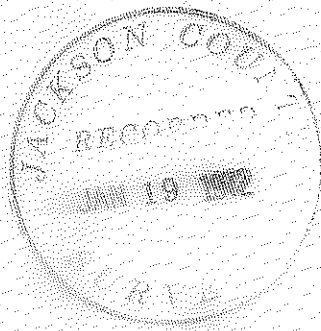


I-72  
 Br. Cap ●  
 Alum. Cap ○  
 Scale 1"=1000'

REGISTERED  
 PROFESSIONAL  
 LAND SURVEYOR

*Duane A. Smeltzer*

OREGON  
 OCTOBER 24, 1959  
 DUANE A. SMELTZER  
 #61



4766

SECTION 7, TOWNSHIP 34S., RANGE 2E., WILLAMETTE MERIDIAN. 1-72.

NARRATIVE: For Medford Corporation. To subdivide and monument Medco property.

See Jackson County survey #4320, 8-70. for previously recorded south and east lines.

Ran closed Transit and chain survey (solar bearings) along west and north lines beginning and ending on prior work. Calculated and set N 1/4 corner. Calculated and set SE and SW 1/16 corners and S 1/16 corner S12/S7.

Found W 1/4 corner S.7. Searched for but could not find N 1/4 corner S.7. NE and SE corners U.S. Brass caps and BTs, NW corner 2" Iron Pipe and County Surveyor BTs., SW corner County Surveyor Brass cap.

WEST LINE: Bearing SW corner to W 1/4 corner N0°08'30"E.

0.0	feet	SW corner. C.S. Brass cap, original position.
1330.8	"	S 1/16 corner S.12/S7. Set 5/8" rebar, Alum. cap. Scribed S 1/16 S 12 RS 461 BT. 5" D.Fir S44°W 22.5'. " S 7 " 8" D.Fir N21°E 15.7'.
2661.7	"	W 1/4 corner. 2" stamped Iron pipe. Original position. Bearing W 1/4 corner to NW corner, N0°10'30"E.
0.0	"	W 1/4 corner.
2662.1	"	NW corner. 2" Iron pipe. County Surveyor BTs.

NORTH LINE: Bearing NW to NE corners, S89°26'E.

0.0	feet	NW corner.
2604.6	"	N 1/4 corner, set 5/8" rebar and Alum. cap by single proportion 40.64/80 ch.x distance on line between corners. Scribed 1/4 S6 RS 461 BT 9" Y.Pine N9°W 42.4'. " 1/4 S7 " 7" D.Fir S6°W 20.0'.
5168.1	"	NE corner. U.S. Brass cap. Original position.

EAST AND SOUTH LINES: See survey # 4320.

INTERIOR LINES:- N-S center-line bears N0°27'30"W. Calculated position of C 1/4 corner at intersection of lines between 1/4 corners. South half N-S center line 2666.4'. North half of line, 2666.3'

E-W center-line bears N89°20'30"W. East half of line, 2595.4'. West half 2634.1'.

Began at E 1/16 corner S.7/S.18, ran N0°48'W 1334.3' to SE 1/16 corner. Set 5/8" rebar and Alum. cap. Scribed SE 1/16 S7 RS 461 BT. 10" D. Fir N42°W 9.8' and 7" D. Fir S56°E 5.5'. From SE 1/16 corner ran S89°18'E 1305.5' to S 1/16 corner S.7/S8.

Began at S 1/16 corner S. 12/S.7, ran S89°18'E 1342.5' to SW 1/16 corner. Set 5/8" rebar and Alum. cap. Scribed SW 1/16 S 7 RS 461 BT a 9" D. Fir N33°E 9.0', and 11" D. Fir S56°W 8.4'. From SW 1/16 corner ran S0°07'30"E 1332.0' to W 1/16 corner S 7/S 18.

