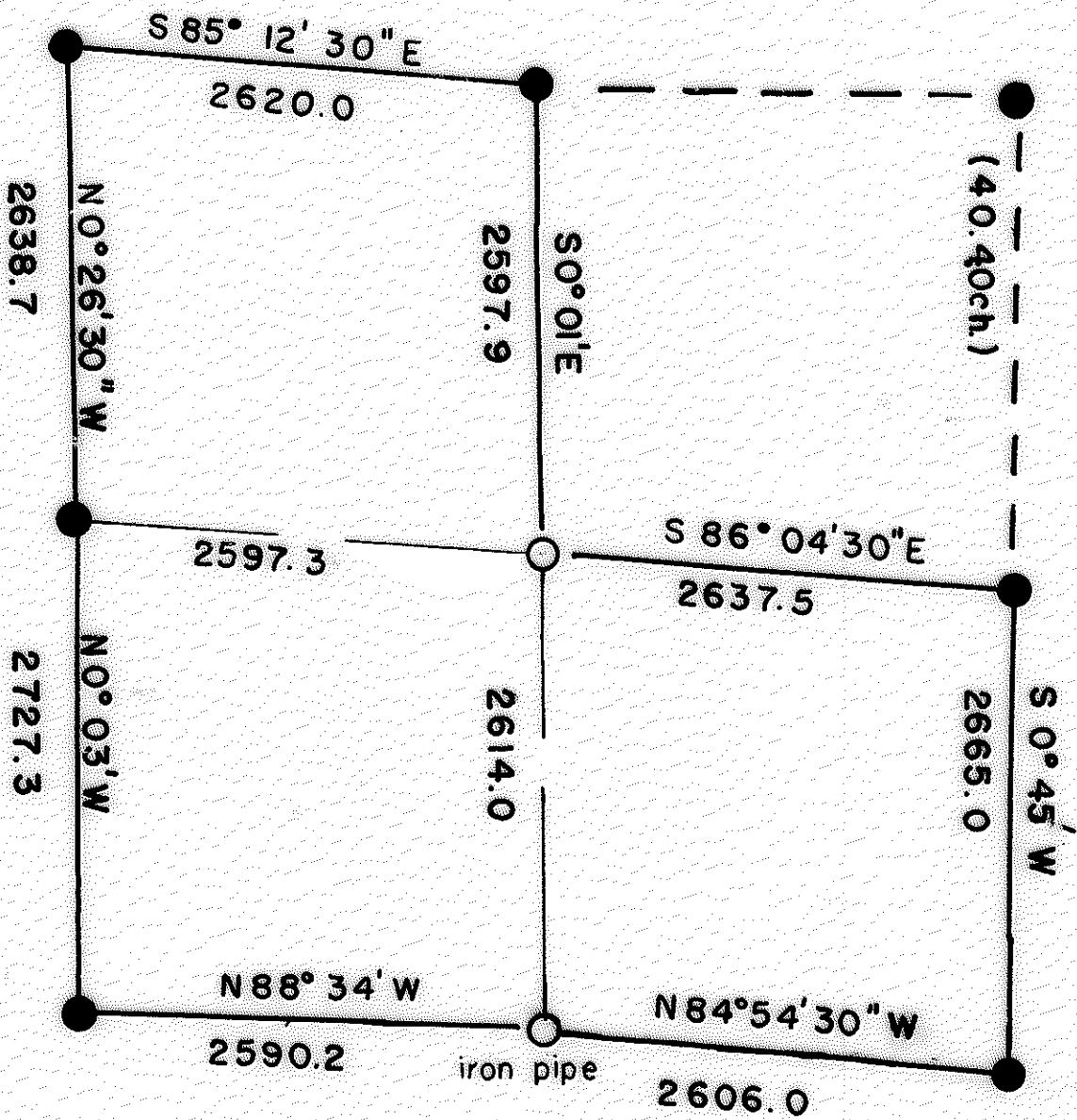


4759

4759

# SECTION PLAT

S 26 T 34S R 3E WM



REGISTERED  
 PROFESSIONAL  
 LAND SURVEYOR

*Dwaine A. Swelter*

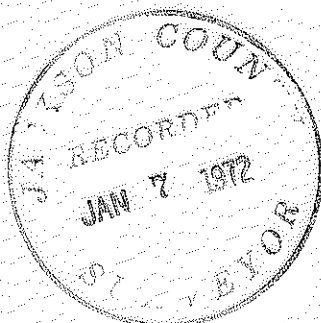
OREGON  
 OCTOBER 24, 1958  
 DWANE A. SWELTER  
 463

Scale 1" = 1000'

Alum. Cap ○

Cad. Br. Cap ●

12-71

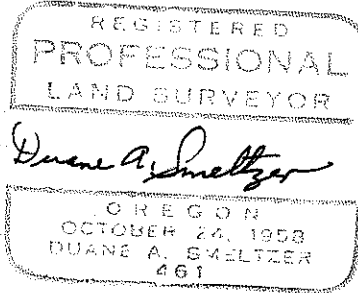
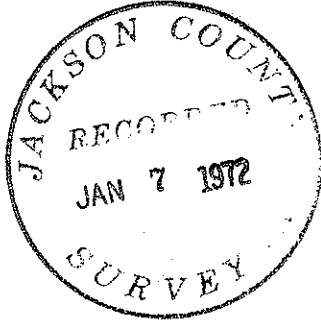


4759

( 2 )

S. 26 T. 34 S. R. 3 E.

WEST LINE:                      Bearing SW Corner to W1/4 Corner N0° 03' W  
0.0                                  feet SW Corner  
2727.3                                feet W1/4 Corner  
  
                                        Bearing W1/4 Corner to NW Corner N0° 26' 30" W  
0.0                                  feet W1/4 Corner  
2638.7                                feet NW Corner Brass Cap



SECTION 26, TOWNSHIP 34 SOUTH, RANGE 3 EAST  
WILLAMETTE MERIDIAN

NARRATIVE: For Medford Corporation. To monument and mark boundaries of Medco property.

Began survey 11<sup>th</sup> 71. Found following evidence.

- NW Corner United States Brass Cap Bearing Trees . Original evidence.
- N1/4 Corner " (1 probable original Bearing Tree) HLM scribed Bearing Tree 40 plus years old.
- NE Corner United States Brass Cap Bearing Trees. Original evidence.
- E1/4 Corner " Set by single proportion.
- SE Corner " Original evidence.
- S1/4 Corner Stone. broken, 2" iron pipe Medco 1957, Cruisers marks, blazes 45 plus years old. Original calls say set stone, no trees available at time of survey. Position of stone deemed accurate by E.W. Smith, Butte Falls, Oregon.
- SW Corner United States Brass Cap Bearing Trees Original evidence.
- W1/4 Corner " "
- " " "

Ran Transit and chain closed traverse (solar bearings ) survey along West 1/2 of North line to N1/4 corner, thence South to approximate C1/4 corner, thence East to E1/4 corner, thence South to SE corner, thence West to S1/4 corner, thence West to SW corner, thence North to W1/4 corner, thence North to NW corner. Used unofficial United States Cadastral information to plat NE corner and for comparison.

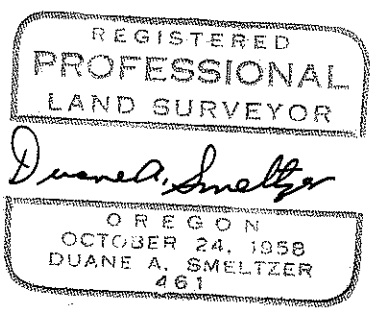
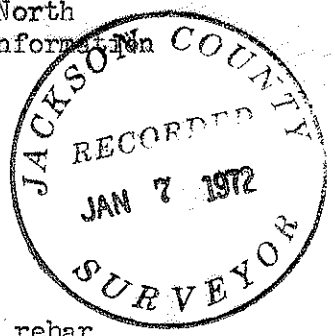
NORTH LINE: Bearing West half S85°12'30"E  
0.0 feet NW Corner Brass Cap  
2620.0 feet N1/4 Corner Brass Cap

N-S CENTERLINE: Bearing S0°01'E  
0.0 feet N1/4 Corner Brass Cap  
2597.9 feet C1/4 Corner. Set Aluminum Cap 5/8" rebar on intersection of lines between 1/4 corners.  
Scribed C1/4 S 26 RS461 BT  
11" D.Fir S16°W 35.7 feet  
7" D.Fir N41 E 5.2 feet  
5211.9 feet S1/4 Corner

E-W CENTERLINE: Bearing N86° 04' 30" W  
0.0 feet E1/4 Corner Brass Cap  
2637.5 feet C1/4 Corner Brass Cap  
5234.8 feet W1/4 Corner Brass Cap  
Scribed 1/4 s 27 RS461 BT  
11" Yew S81°W 40.2 feet

EAST LINE: Bearing N 0° 45' E  
0.0 feet SE Corner Brass Cap  
2665.0 feet E1/4 Corner Brass Cap  
E1/4 Corner to NE Corner (40.40 chains N0°45'E unofficial Cadastral calls).

SOUTH LINE: Bearing SE Corner to S1/4 Corner N84° 54' 30" W  
0.0 SE Corner Brass Cap  
2606.0 S1/4 Corner, Stone, 2"plugged iron pipe strapped  
Scribed 1/4 S 26 RS461 BT 13"W.Fir N70°W 5.5 feet  
" 1/4 S35 RS461 BT 7"D.Fir S20°W 45.6 feet  
Bearing S1/4 Corner to SW Corner N88°34'W  
0.0 S1/4 Corner Iron Pipe  
2590.2 feet SW Corner Brass Cap



S26  
MEDCO  
S35