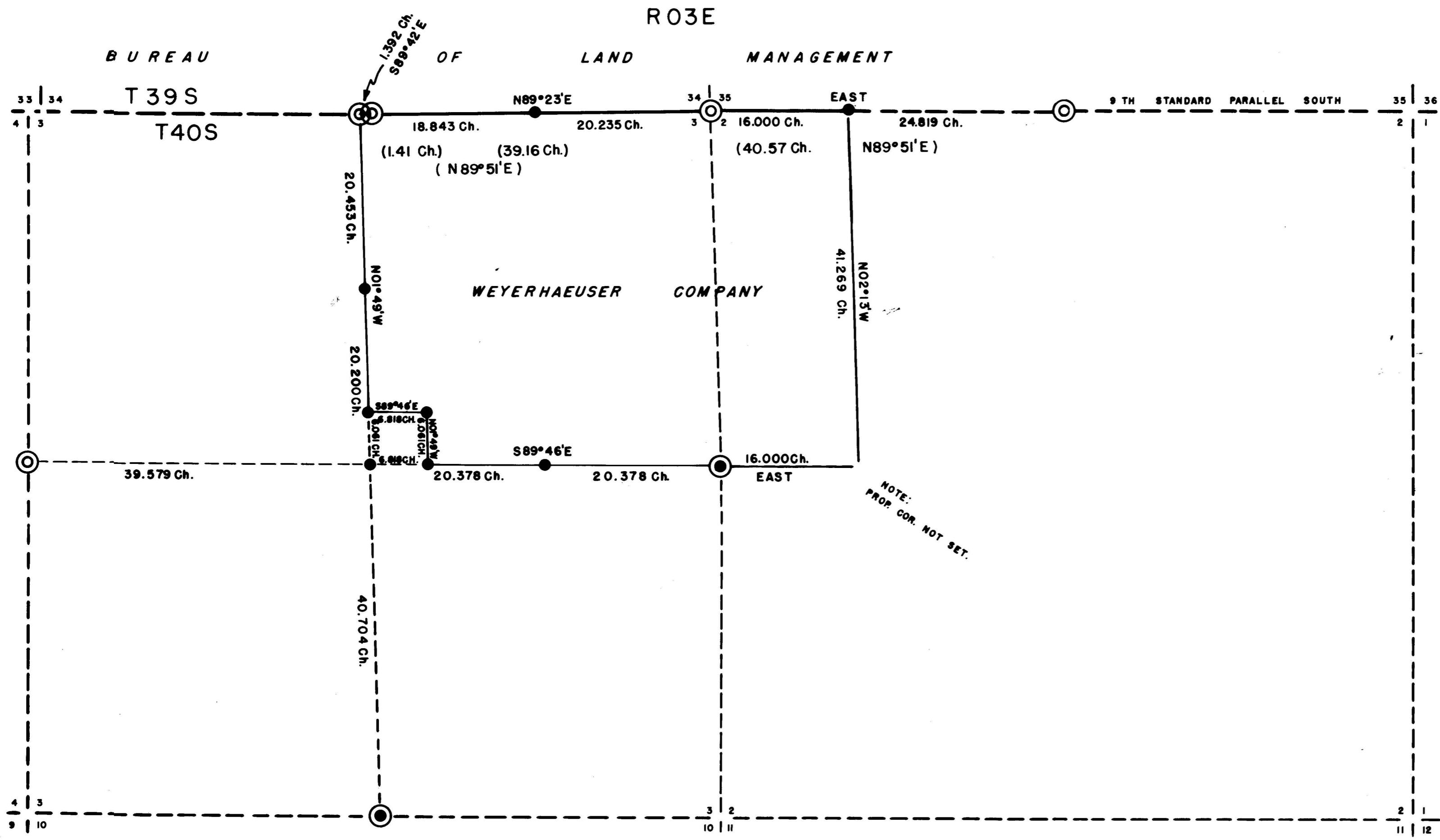


Survey started in July, 1970, and completed in December, 1970, by G.R. Clark under the direct supervision of C.H. Hammersley.



I, Creal H. Hammersley, certify that I have surveyed and monumented the land delineated on this plat and that this plat is a true representation of said survey.

BEARINGS BASED ON SOLAR TRANSIT OBSERVATIONS




REGISTERED OREGON LAND SURVEYOR
Creal H. Hammersley
JULY 9, 1965
CREAL H. HAMMERSLEY
686

- Lines, Blazed
- - - Lines, Other
- ⊙ Found, Brass Cap
- Found, Corner, Set SurvKAP
- Set, SurvKAP

(BEARINGS & DISTANCES) G.L.O. NOTES OF FRED W. RODOLF
RETRACE, AUG. 19, 1916

Retrace & Subdivision
Secs 2 & 3, T40S, R03E W.M.
Jackson County, Oregon

 **Weyerhaeuser Company**
Klamath Falls Branch

SCALE — 1" = 10 Chains DATE — Dec. 3, 1970
DEL. — G.R.C. CHECKED BY — C.H.C.
TRACED — G.R.C. DRAWING No — LS 70-8

Then on a true line West and being the 9th standard parallel 24.819 chains which I monumented with a 5/8" x 30" I.R. on which is affixed a Survkap and is stamped:

WEYERHAEUSER

Prop Cor

$\frac{35}{2}$

ORLS 686

and is referenced by:

a 48" Fir, N55°E, 2.2 Links.

Continuing on true line to 40.819 chains and the section corner common to Sections 2, 3, 34 & 35, as described on page 1.

Subdivision

Section 2, T40S, R3E

Beginning at the property corner common to Sections 2 & 35 and running S02°13'E on a true line 41.269 chains and set a 5/8" x 30" I.R. for a witness corner for the N S property line only.

Then ran West 16.000 chains to close the survey. Will use this line for tree harvest only and is not the true property line.

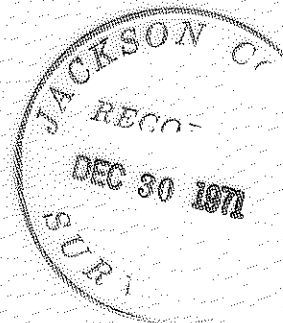
Upon having closed the survey found the error of closure to be within the limits and blazed the property lines around the Weyerhaeuser Company ownership.

All corners set this survey are in a mound of stone, and all bearings and distances to reference trees established this survey are to 'W' nails set at the base of the trees.

Garry R. Clark
Garry R. Clark, Party Chief

Approved:

Crest H. Hammersley
Crest H. Hammersley
Woods Engineering Supervisor



and is referenced by:

a 6" White Fir, N85⁰E, 51.0 Links

a 6" White Fir, S05⁰E, 22.0 Links

Continuing on true line to station 33.938 chains when I set a 5/8" x 30" I.R. on which is affixed a Survkap that is stamped:

WEYERHAEUSER

S E

Prop Cor

ORLS 686

Continuing on true line to station 40.756 chains and the C $\frac{1}{4}$ corner of Section 3.

Beginning at the N W prop. cor. and running S89⁰46'E on a true line 6.818 chains and set a 5/8" x 30" I.R. on which is affixed a Survkap that is stamped:

WEYERHAEUSER

N E

Prop cor

ORLS 686

Then running S01⁰49'E on a true line 6.061 chains and to the S E prop cor.

Retrace

W $\frac{1}{2}$ of North Boundary of Section 2, T40S, R3E

Beginning at section corner common to Sections 2 & 3, T40S, R3E and Sections 34 & 35, T39S, R3E and running N89⁰12'E on a random line to 40.815 chains and 57.0 Links North of the $\frac{1}{4}$ corner common to Sections 2 & 35 which is monumented by a brass cap set by the U. S. General Land Office and is stamped:

$\frac{1}{4}$ $\frac{S35}{S2}$

1917

and is referenced by:

a 48" Ponderosa Pine, North (called N10⁰E in old notes) 16.0 Links(B.T.)

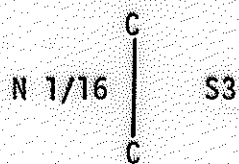
a 24" White Fir (Dead) S40⁰W (called S35⁰W in old notes) 66.0 Links (B.T.) Scribing evident; both trees bear B.T. tags.

and is further referenced by:

a 12" White Fir, S42⁰E, 51.0 Links

a 9" White Fir, N87⁰W, 47.4 Links.

WEYERHAEUSER



1970

ORLS 686

and is referenced by:

a 12" White Fir, N55°E, 10.5 Links

a 10" White Fir, S35°E, 49.0 Links

then continuing on true line to station 34,592 chains at which I set a 5/8" x 30" I.R. on which is affixed a Survkap that is stamped:

WEYERHAEUSER

N W

Prop Cor

ORLS 686

Then continuing on true line to station 40,653 chains and the true center 1/4 corner of Section 3 which I monumented with a 5/8" x 30" I.R. on which is affixed a Survkap and is stamped:

WEYERHAEUSER

C 1/4

S 3

1970

ORLS 686

and is referenced by:

a 30" White Fir, N85°E, 33.0 Links

a 20" Red Cedar, S05°W, 105.0 Links

a 7" White Fir, N40°W, 61.3 Links

Beginning at the 1/4 corner common to Sections 2 & 3 and running N89°46'W, on a true line to station 20,378 chains and the E C 1/16 corner where I set a 5/8" x 30" I.R. on which is affixed a Survkap that is stamped:

WEYERHAEUSER

E 1/16



S 3

1970

ORLS 686

and was referenced by:

a 36" P. Pine (called a fir in old notes) bears S45°W, 15.0 Links

a 15" Fir (Dead) bears N70°W, 13.0 Links

Both B.T.'s are scribed.

and is further referenced by:

a 16" White fir, bears N39°E, 9.5 Links (scribed CSBT)

a 14" White fir, bears S58°E, 12.7 Links (scribed CSBT)

The $\frac{1}{2}$ corner common to Sections 2 & 3 was re-established from a 48" fir stump. The stump had been chopped into and the decaying process had begun so no evidence of scribing was visible. The bark lying on the ground had been painted 'B.T.' The described stump is the only evidence in the area that indicates the existence of the described B.T. even though there was no physical evidence of the B.T. to the southwest of the corner location.

Beginning at the afore described $\frac{1}{2}$ corner which is now monumented with a 5/8" x 30" I.R. on top of which is set a Survkap that is stamped:

WEYERHAEUSER

$\frac{1}{2}$
S3 | S2
1970

ORLS 686

and from which bears:

a 48" White Fir (stump) S15°E, 50.0 Links (B.T.)

and is further referenced by:

a 10" White Fir, S05°E, 7.0 Links

a 13" White Fir, N04°W, 39.0 Links

Then running westerly through the temporary C $\frac{1}{2}$ and to the $\frac{1}{2}$ corner common to Sections 3 & 4 which was monumented with a brass cap on which was stamped:

T40S - R3E

$\frac{1}{2}$ cor 4 | 3 C. S.
1964

from which bears:

a 24" White Fir, East, 44.6 Links

a 18" White Fir, 10°W, 27.4 Links

both trees being scribed C. S.

Beginning at the North $\frac{1}{2}$ corner of Section 3 and running S01°49'E on a true line 20.453 chains to the N C 1/16 which I set with a 5/8" x 30" I.R. on which was affixed a Survkap and which is stamped:

Then running $N89^{\circ}42'W$ on a true line a distance of 1.392 chains and the $N\frac{1}{2}$ corner of Section 3, T40S, R3E, which was found to be monumented by a brass cap set by the U. S. General Land Office and stamped:

$\frac{1}{2}$ S3

1917

and was referenced by:

a 53" Douglas Fir (stump), $S1^{\circ}W$, 38.0 Links

a 24" P. Pine Dead & Down, $S37^{\circ}E$, 83.0 Links, scribing visible

and is further referenced by:

an 8" White Fir, $S26^{\circ}E$, 9.1 Links

a 7" White Fir, $S28^{\circ}W$, 17.8 Links

Then from the afore described $N\frac{1}{2}$ corner of Section 3 on the true line common to Townships 39 & 40 South and being the 9th standard parallel, $S89^{\circ}42'E$ a distance of 1.392 chains to the $S\frac{1}{2}$ corner of Section 34, T39S, R3E.

Then continuing on the 9th standard parallel on a true line $N89^{\circ}23'E$ a distance of 18.843 chains. When I set the E 1/16 for Section 3, T40S, R3E, the corner being monument with a mound of stone in which a $5/8" \times 30"$ I.R. on which is affixed a Survkap that is stamped:

WEYERHAEUSER

E 1/16 S3

1970

ORLS 686

and is referenced by:

a 6" White Fir, $N85^{\circ}E$, 51.0 Links

a 6" White Fir, $S05^{\circ}E$, 22.0 Links

then continuing $N89^{\circ}23'E$ a distance of 20.235 chains to the common corner of Sections 2 & 3, T40S, R3E and Sections 34 & 35, T39S, R3E as described on page 1.

Subdivision

$NW\frac{1}{4}$ Section 3, T40S, R3E

Beginning at the previously described $N\frac{1}{2}$ of Section 3, T40S, R3E and running $S00^{\circ}48'W$ on a random line, set temporary center $\frac{1}{2}$ then ran to $\frac{1}{2}$ corner common to Sections 3 & 10, T40S, R3E which was found to be monumented by a 1" I.P. Set $5/8" \times 30"$ I.R. down through the center of same. The Survkap that is affixed to the top of the I.R. is stamped:

WEYERHAEUSER

$\frac{1}{2}$ S3
S70

1970

ORLS 686

WEYERHAEUSER COMPANY

KLAMATH FALLS AREA

Retrace & Subdivision

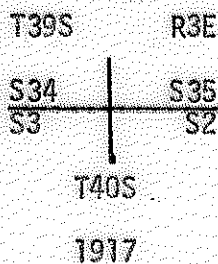
Sections 2 & 3-T40S-R3E

Jackson County, Oregon

This survey was made by G. R. Clark, R. F. Kring, and M. W. Edwards, plus two axemen. This survey was started July 7, 1970, and completed December 1, 1970, under the direct supervision of C. H. Mammersley.

Retrace

E $\frac{1}{2}$ of North Boundary of Section 3, T40S, R3E. Beginning at the corner common to Sections 2 & 3 of T40S, R3E and Sections 34 & 35 of T39S, R3E, which I found to be monumented by a brass cap set by the U. S. General Land Office and stamped:



and which was referenced by:

a 29" white fir, N14⁰W, 40.0 Links; no scribing visible; face is rotted,

and is further referenced by:

- a 9" White fir, N74⁰E, 30.0 Links
- an 8" White fir, S43⁰E, 39.0 Links
- a 16" White fir, S64⁰W, 25.0 Links
- a 9" Douglas fir, N33⁰W, 40.0 Links

From the above described corner I began running S89⁰56'W on a random line to a distance of 39.078 chains to a point 37.6 Links north of the S $\frac{1}{2}$ corner of Section 34, T39S, R3E, which was monumented by a brass cap set by the U. S. General Land Office and stamped:



and was referenced by:

- a 51" Douglas Fir, 34⁰W, 45.0 Links, scar & B.T. tag
- a 60" Douglas Fir, N21⁰E, 53.0 Links, scar & B.T. tag

and is further referenced by:

- a 12" White Fir, S80⁰W, 16.7 Links
- a 11" White Fir, N71⁰W, 26.9 Links