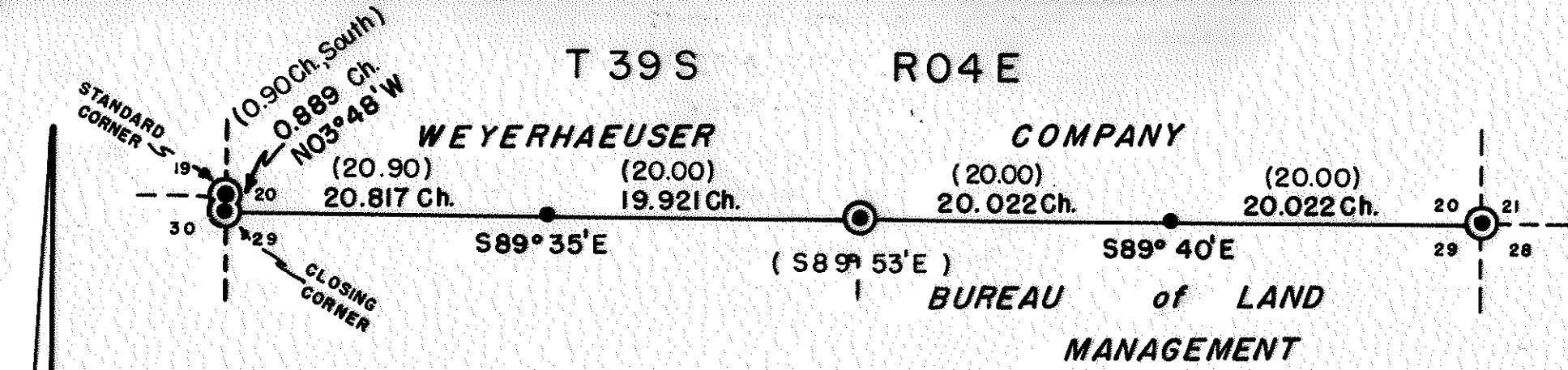


4754

T 39 S R 04 E



I, Creal H. Hammersley, certify that I have surveyed and monumented the land delineated on this plat and that this plat is a true representation of said survey.

- Lines, blazed
- - - Lines, other
- ⊙ Found corner, set SurvKAP
- Set corner, SurvKAP

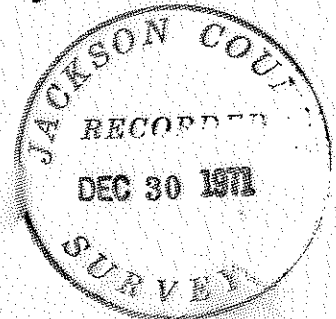
BEARINGS BASED ON SOLAR TRANSIT OBSERVATIONS

(Bearings & Distances)  
G.L.O. Notes of Peter Applegate,  
Contract no. 616, June 2, 1893.


REGISTERED  
OREGON  
LAND SURVEYOR

*Creal H. Hammersley*

JULY 9, 1965  
CREAL H. HAMMERSLEY  
686



RETRACE & SUBDIVISION  
SOUTH LINE of Sec 20, T39S, R04EWM  
Jackson County, Oregon

 **Weyerhaeuser Company**  
Klamath Falls Branch

SCALE — 1" = 10 Chains      DATE — December 10, 1970  
DEL. — G.R.C.      CHECKED BY — C.L.C.  
TRACED — G.R.C.      DRAWING No — LS 70-10

4754

Then running N89°40'W on a true line 20.022 chains and the E 1/16 common to Sections 20 & 29 at which I set a 5/8" x 30" I.R. with a Survkap that is stamped:

WEYERHAEUSER

E 1/16  $\frac{20}{29}$

1970

ORLS 686

and is referenced by:

a 10" Red Cedar, bears N20°E, 54.0 Links

an 18" Red Cedar, bears S23°E, 80.2 Links

Then continuing on the true line 40.044 chains and the 1/4 corner common to Sections 20 & 29 as previously described.

Then from the afore described 1/4 corner common to Sections 20 & 29 and running N89°35'W on a true line 19,921 chains and the W 1/16 corner common to Sections 20 & 29 which I set by proportional measurement and monumented with a 5/8" x 30" I.R. with a Survkap that is stamped:

WEYERHAEUSER

W 1/16  $\frac{20}{29}$

1970

ORLS 686

and is referenced by:

a 20" Ponderosa Pine, bears N20°E, 15.0 Links

an 8" Red Cedar, bears S22°W, 19.6 Links

Then continuing on the true line to 40.738 chains and the closing corner common to Sections 20 & 29 as previously described.

Having completed the transit and chain survey, I then blazed the true line between Sections 20 & 29.

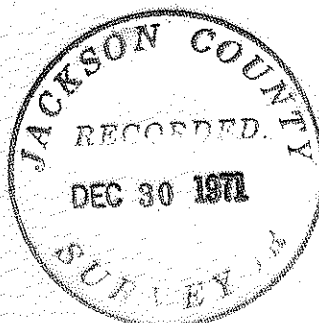
Bearings and distances to all reference trees established are to 'W' nails set in the base of the trees.

All corners set this survey are in a mound of stone and have squared wooden posts.

Garry R. Clark  
Garry R. Clark, Party Chief

Approved:

Crest H. Hammersley  
Crest H. Hammersley  
Woods Engineering Supervisor



all B.T.'s have tags and scribing is visible.

Then running East on a random line 40.738 chains to a point 29.2 links North of the 1/4 corner common to Sections 20 & 29 which was found to be monumented by a basalt stone 12" x 8" x 8" and scribed 1/4 on North face. Replaced stone with a 5/8" x 30" I.R. and set stone alongside I.R. The top of I.R. is affixed with Survkap which is stamped:

WEYERHAEUSER

1/4 20  
29

1970

ORLS 686

and is referenced by:

a 20" Juniper B.T. bears S57°E (called S57°W in old notes)  
112.0 Links, scribing is visible

a 12" Black Oak B.T. bears N53°W (called N53°E in old notes)  
25.0 Links; face had been opened and is growing closed.

Both B.T.'s have tags.

Then running S89°35'E on a random line 40.044 chains and to a point 5.8 links south of the section corner common to Sections 20, 21, 28 & 29, T39S, R04E and which was monumented by a 12" x 8" x 8" basalt stone that has 2 notches on the south face and 4 notches on the East face. The stone was replaced with a 5/8" x 30" I.R. and placed alongside the I.R. The top of the I.R. is affixed with a Survkap which is stamped:

WEYERHAEUSER

T39S R4E

20 | 21  
29 | 28

1970

ORLS 686

and was found to be referenced by:

a 48" white fir B.T. (dead) bears N52°E, 72.0 Links. Scribing visible.

a 42" P. Pine B.T. (called bull pine in old notes) bears S29°E  
90.0 Links. Scribing visible.

an 18" (called 30" in old notes) white fir, bears S50 1/2°W,  
115.0 Links. Scar evident.

a 40" P. Pine (called yellow pine in old notes) bears N23°W,  
128 Links. Scar evident.

all B.T.'s have tags.

and further referenced by:

a 10" white fir, bears N70°E, 11.7 Links

a 10" white fir, bears S58°E, 12.0 Links

an 11" white fir, bears S49°W, 11.0 Links

a 12" white fir, bears N23°W, 12.4 Links

WEYERHAEUSER COMPANY

KLAMATH FALLS AREA

Retrace & Subdivision

South Line of Section 20, T39S, R04E, W.M.

Jackson County, Oregon

This survey was made by G. R. Clark, R. F. Kring, M. W. Edwards, and two axemen. The survey was started July 24, 1970, completed December 15, 1970, and field checked November 19, 1971, under the direction of C. H. Hammersley.

Starting at the standard section corner common to Sections 19 and 30, T39S, R04E which was found to be monumented by a mound of stone 3 feet wide at the base and 2 feet high, set a 5/8" x 30" I.R. in the center of the mound. Affixed a Survkap to the top of the I.R. which is stamped:

WEYERHAEUSER

T39S R4E

19 | 20  
30

1970

ORLS 686

and is referenced by:

- a 14" Juniper B.T. (called a cedar in old notes) bears N27°E, 61.0 Links
- an 18" Juniper B.T. (called a cedar in old notes) bears S43°E, 53.0 Links

and further referenced by:

- a 12" Juniper bears N02°W, 54.6 Links

All trees have B.T. tags and scribing is visible on all B.T.'s.

Then running S03°48'E on a true line 0.889 chains to the closing section corner common to Sections 20 & 29, T39S, R04E which was found to be monumented by a basalt stone 20" x 12" x 8" which has 2 notches on the south face and 5 notches on the east face. Replaced stone with a 5/8" x 30" I.R. and set stone next to I.R. on top of which is affixed a Survkap that is stamped:

WEYERHAEUSER

T39S R4E

30 | 20  
29

1970

ORLS 686

and is referenced by:

- a 20" Juniper B.T. bears N34½°E, 60.0 Links
- a 10" Juniper B.T. bears S36½°E, 108.0 Links
- a 20" Juniper B.T. dead & down bears S11°W, 145.0 Links