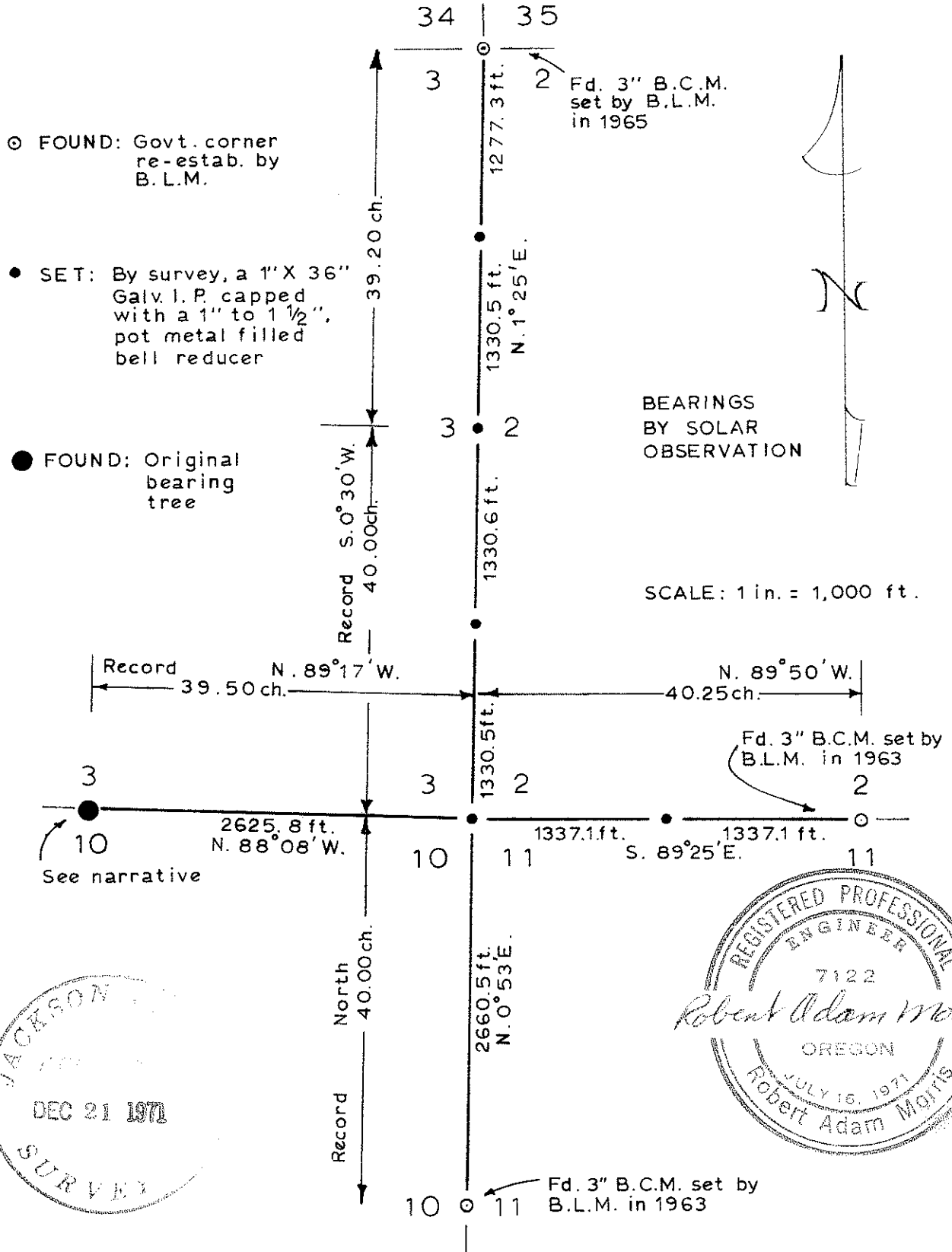


SURVEY FOR

BOISE CASCADE CORPORATION

P. O. Box, 100 Medford, Ore.

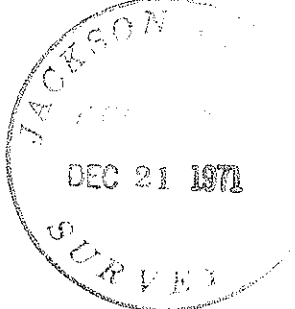
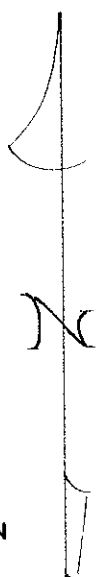
TOWNSHIP 34 SOUTH RANGE 2 WEST W.M.



○ FOUND: Govt. corner re-estab. by B.L.M.

● SET: By survey, a 1" X 36" Galv. I. P. capped with a 1" to 1 1/2", pot metal filled bell reducer

● FOUND: Original bearing tree



4734

From which:

a 17" Douglas fir bears N 16° W a distance of 31.4 feet,
scribed W 1/16 S2 - BT

a 14" ponderosa pine bears S 50° W a distance of 36.1 feet,
scribed W 1/16 S11 - BT.

Distances and bearings to bearing trees taken to the face of the
upper blaze and magnetic declination set at 20° E.

December 14, 1971



At the N 1/16 corner common to Sections 2 and 3 set a 1" x 36" galvanized iron pipe 30" in the ground, capped with a 1½" to 1" pot metal filled bell reducer, stamped as shown below:

RE 7122
N 1/16
3 | 2
T34S R2W
1971

From which:

a 15" Douglas fir bears N 61° W a distance of 53.0 feet,
scribed N 1/16 S3 - BT

a 17" Douglas fir bears S 40° E a distance of 33.7 feet,
scribed N 1/16 S2 - BT.

At the ¼ corner common to Sections 2 and 3 found no evidence of the original corner. Set, at the proportionate distance, a 1" x 36" galvanized iron pipe, 29" in the ground, capped with a 1½" to 1" pot metal filled bell reducer, stamped as shown below:

RE 7122
¼
3 | 2
T34S R2W
1971

From which:

a 11" Douglas fir bears S 71½° W a distance of 6.3 feet,
scribed ¼ S3 - BT

a 14" Douglas fir bears S 34° E a distance of 11.1 feet,
scribed ¼ S2 - BT.

At the S 1/16 corner common to Sections 2 and 3 set a 1" x 36" galvanized iron pipe, 34" in a mound of stone, capped with a 1½" to 1" pot metal filled bell reducer, stamped as shown below:

RE 7122
S 1/16
3 | 2
T34S R2W
1971

From which:

a 10" Douglas fir bears N 43° E a distance of 6.6 feet,
scribed S 1/16 S2 - BT

a 9" Douglas fir bears N 77° W a distance of 12.7 feet,
scribed S 1/16 S3 - BT.

At the W 1/16 corner common to Sections 2 and 11 set a 1" x 36" galvanized iron pipe 30" in the ground, capped with a 1½" to 1" pot metal filled bell reducer, stamped as shown below:

RE 7122
W 1/16
2
11
T34S R2W
1971

SURVEY NARRATIVE TO COMPLY WITH O.R.S. 209.250

FOR: Boise Cascade Corporation
 P. O. Box 100
 Medford, Oregon 97501

PURPOSE: To re-establish lost corners in Township 34 South, Range 2 West and to set certain 1/16 corners on the exterior boundaries of Section 2, Township 34 South, Range 2 West.

PROCEDURE: Ran a random transit traverse over the lines shown on the attached map with a 1 minute transit and a 200-foot steel tape. Bearings were obtained by solar observation.

At the $\frac{1}{4}$ corner common to Sections 3 and 10 found a 9" white oak with visible scribing and a 13" black oak with ax marks and a badly rotted center. This black oak fits the description for the other bearing tree quite well. At the record distance from the two trees set a 1" x 36" galvanized iron pipe, 32" in the ground, capped with a $1\frac{1}{2}$ " to 1" pot metal filled bell reducer stamped as shown below:

RE 7122
 $\frac{1}{4}$
3
 10
 T34S R2W
 1971

From which:

the 9" white oak bears N 58° E a distance of 22.4 feet, scribe visible.

the 13" black oak bears S 22° E a distance of 19.8 feet, no scribe visible.

a 16" Douglas fir bears S 59° E a distance of 13.5 feet, scribed $\frac{1}{4}$ S 10 - BT

a 17" Douglas fir bears N 64 $\frac{1}{2}$ ° W a distance of 12.1 feet, scribed $\frac{1}{4}$ S 3 - BT.

At the Section corner common to Sections 2, 3, 10 and 11 found no evidence of the original corner. Set, at the proportionate distance, a 1" x 36" galvanized iron pipe, 30" in the ground, capped with a $1\frac{1}{2}$ " to 1" pot metal filled bell reducer, stamped as shown below:

RE 7122
 SEC. COR.
 $\frac{3}{10}$ | $\frac{2}{11}$
 T34S R2W
 1971

From which:

a 23" Douglas fir bears N 32 $\frac{1}{2}$ ° E a distance of 19.3 feet, scribed S2 T34S R2W - BT

a 9" Douglas fir bears S 9° E a distance of 40.4 feet, scribed S11 T34S R2W - BT

a 11" Douglas fir bears S 74° W a distance of 37.5 feet, scribed S10 T34S R2W - BT

a 11" ponderosa pine bears N 66 $\frac{1}{2}$ ° W a distance of 51.0 feet, scribed S3 T34S R2W - BT.