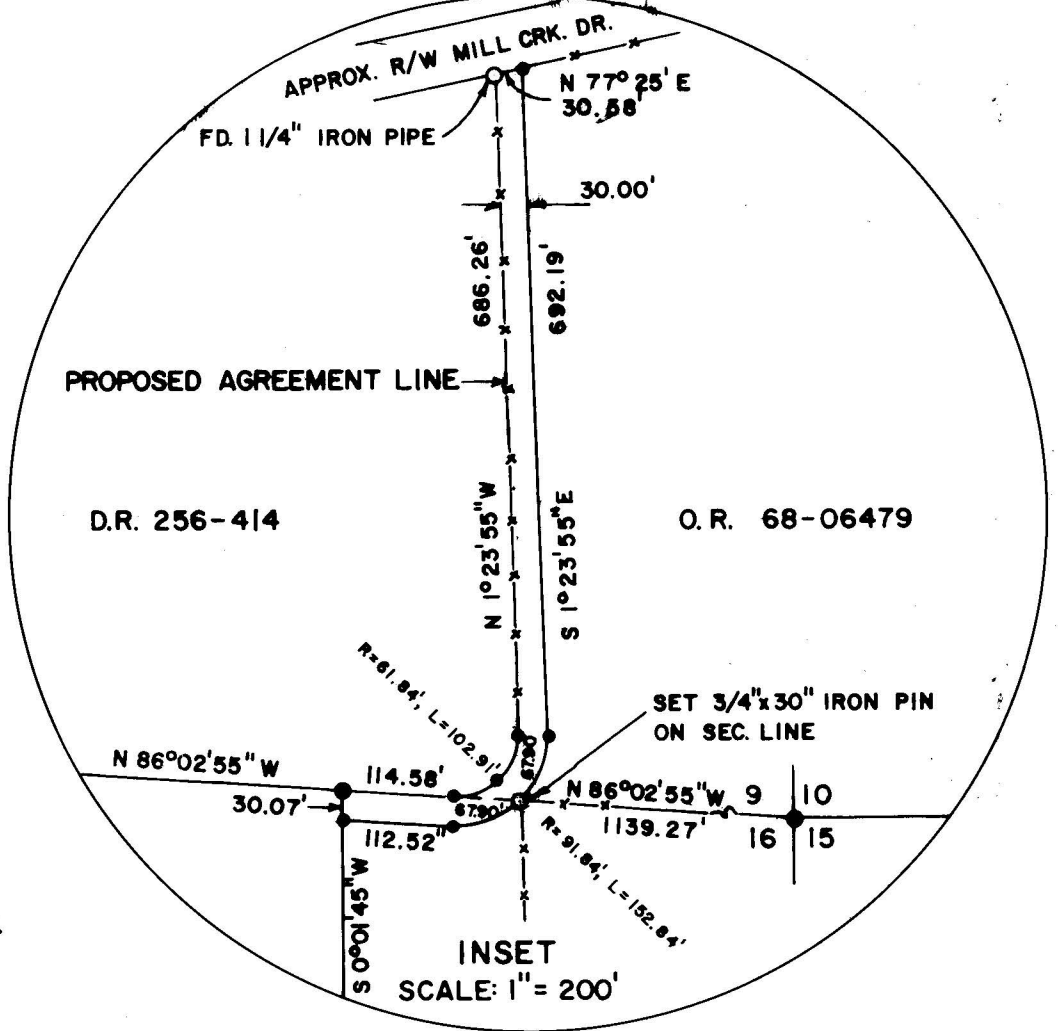


SEE INSET

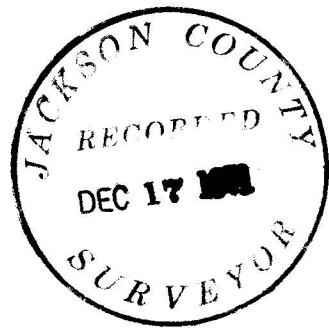


HISTORY OF SURVEYS

SOUTH & WEST BDY. OF TWP BY NATHANIEL FORD, CONTRACT NO. 58 DTD. APRIL 16, 1855

NORTH & POR. OF EAST BDY. & PARTIAL SUBDIVISION OF TWP (SECS 1-9) BY WM. M. TURNER & J. S. HOWARD, CONTRACT NO. 142 DTD. SEPT. 7, 1870

POR. OF EAST BDY. & COMPLETION OF SUBDIVISION OF TWP. BY PETER APPLIGATE, CONTRACT NO. 571 DTD. APRIL 10, 1891



REGISTERED OREGON LAND SURVEYOR

*Charles H. Hurst*

OCTOBER 30, 1959 CHARLES H. HURST 483

DEC 15 1971

SURVEY FOR OLSON-LAWYER LUMBER COMPANY SITUATED IN SECTIONS 9 & 16 T. 33 S., R. 2 E. W. M. JACKSON COUNTY, OREGON

SURVEY BY: CHARLES H. HURST, L.S. MEDFORD, OREGON

LEGEND

- SET 5/8" x 24" IRON PINS (INSET)
- SET 2" x 30" BR. CAPPED IRON PIPE MON.
- EXISTING FENCES

Cor. falls at base of rock incline just E of a small ravine,  
c N, and approx. 150' S of steep canyon, c NW

1/4 Corner Sections 9 & 10

Coords: 13256.873  
5325.653

Fd. 1 $\frac{1}{2}$ " iron pipe (possibly set by Corps of Engineers) on E'ly bdy. of private road approx. 5 ft. S of E-W fence line. I pulled pipe and replaced same exactly after unsuccessful search for mon. set for cor. during course of Survey 1098. This cor. is considered to be at the original location according to unsworn statements by local residents. No evidence of original witness tree in SW quadrant.

A White oak, 8 ins. dia., brs S 64° E 5.28 ft., badly axed on top and bottom faces, no scribing noted, growth ring count indicate tree approx. 4 ins. dia. in 1870 in agreement with gov't. record.

Ctr. 1/4 Corner Section 16

Coords: 8114.130  
2685.080

Set a 2"x30" iron pipe with br. cap suitably mkd. for cor from which

A Doug. fir, 15.5 ins. dia., brs. N 6°05' W 46.54 ft.  
mkd. C 1/4 S16 BT

A Doug. fir, 9.3 ins. dia., brs. N 39°23' E 62.05 ft.  
mkd. C 1/4 S16 BT

Ctr. - East 1/16 Corner Section 16

Coords: 8022.612  
3001.789

Set a 2"x30" iron pipe with br. cap suitably mkd. for cor. from which

A Black oak, 11.8 ins. dia., brs. S 43°10' W 52.46 ft.  
mkd. CE 1/16 S16 BT

A Ponderosa pine, 19.5 ins. dia., brs. N 44°30' W 31.76 ft.  
mkd. CE 1/16 S16 BT

East 1/16 Corner Sections 9 & 16

Coords: 10630.705  
4004.997

Set a 2"x30" iron pipe with br. cap suitably mkd. for cor. from which

A Doug. fir, 9.5 ins. dia., brs. N 49°41' W 47.68 ft.  
mkd. E 1/16 S9 BT

A Doug. fir, 8.2 ins. dia., brs. S 73°07' E 17.05 ft.  
mkd. E 1/16 S16 BT

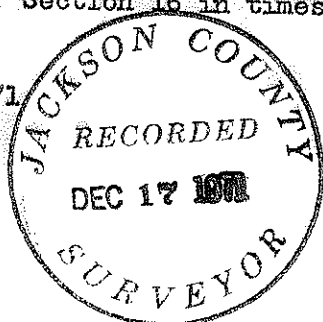
An iron pipe, 3/4 ins. dia., brs. N 2°56'48" W 110.24 ft.  
(See Survey 1098)

Cor. falls 110 ft. S of a single strand wire fence, c E-W, and 182.48 ft. W of a well constructed fence line, c N-S.

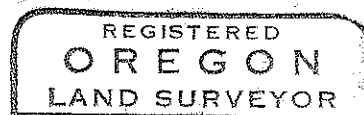
Survey performed with Geodimeter. Measurements to new witness trees to center, measurements to existing witness trees to face.

The agreement line shown on the attached plat was located down an existing fence line in accordance with the wishes of adjoining owners, said fence long having been considered the true division line on the basis of deed descriptions beginning at or near the location of a now obliterated fence corner considered to have been the NE corner of Section 16 in times past.

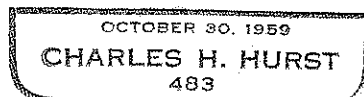
December 15, 1971



4-4



*Charles H. Hurst*



by past tractor operations in the vicinity. A vertical rock bluff falls 14 chains S therefrom verifying gov't. record. I accept stone for cor. and replace same with a 2"x30" iron pipe with br. cap suitably mkd. and place stone alongside from which

- A Doug. fir, 19.5 ins. dia., brs. N 7°15' E 53.11 ft.  
mkd. T33S R2E S10 BT
- A Doug. fir, 8 ins. dia., brs. S 11°15' E 23.09 ft.  
mkd. T33S R2E S15 BT
- A Doug. fir, 13.1 ins. dia., brs. S 42°45' W 47.21 ft.  
mkd. T33S R2E S16 BT
- A Doug. fir, 6.7 ins. dia., brs. N 53°45' W 19.98 ft.  
mkd. T33S R2E S9 BT
- An iron pipe, 2 ins. dia., brs. N 11°11'30" W 66.41 ft.
- A wooden hub, 2 ins. x 2 ins., badly decayed, brs. N 9°41'40" W  
67.22 ft.

Original field notes for Survey 1098 locate pos. of old fence cor., now obliterated, as brg. N 73°26'06" E 134.51 ft. from aforementioned iron pipe.

Original COPCO field notes dtd. May 31, 1940, established a position for a point of beginning for tracts described in D.R. 230-471 as being the NE cor. of Sec. 16, said position falling 13.3 ft. S and 30.1 ft. W of fence cor. above noted.

1/4 Corner Sections 9 & 16

Coords: 10721.777  
2686.389

No evidence of original corner. At single proportionate distance I set a 1"x24" iron pipe with br. cap suitably mkd. for cor. flush with pavement from which

- A White oak, 7.1 ins. dia., brs. N 33°43' W 94.21 ft.  
mkd. 1/4 S9 BT
- A Doug. fir, 16 ins. dia., brs. S 75°46' W 110.35 ft.  
mkd. 1/4 S16 BT

Cor. falls in pavement of Oregon Highway No. 62 5.6 ft. W of E edge of paving and approx. 30 ft. W of edge of Cascade Gorge. Original field notes for COPCO Power Line 6 dtd. April 5, 1924, indicate a cor. set 2640 ft. E of the NW cor. of Sec. 16 per gov't. notes of 1870. This cor. was recovered and perpetuated by Survey 1098 and falls approx. 182 ft. N of proportionate corner.

1/4 Corner Sections 16 & 21

Coords: 5459.793  
2683.728

Fd. CS br. cap mon. & witness trees per CS 1969 re-estab. notes.

1/4 Corner Sections 16 & 17

Coords: 8298.011  
39.187

Fd. 1" iron pipe per CS 1929 re-estab. notes.

1/4 Corner Sections 15 & 16

Coords: 7931.094  
5318.498

Fd. 2 windthrown Doug. firs, 18 ins. dia., scribing intact. At the cor. point I set a 2"x30" iron pipe with br. cap suitably mkd from which

- A Doug. fir, 14.3 ins. dia., brs. S 80°30' E 34.17 ft.  
mkd. 1/4 S15 BT
- A Doug. fir, 21 ins. dia., brs. N 84°20' W 43.65 ft.  
mkd. 1/4 S16 BT

Accordingly, it was determined to retrace Survey 1098 trusting that somehow a pattern might emerge leading to the recovery of some additional original corners, or at least, a double proportionate relocation of the NE corner of Section 16 based on reties to the corners found by Survey 1098, excluding consideration of the location of COPCO's 1924 1/4 corner which obviously was not set according to standard procedures.

Analysis of data obtained by the retracement of Survey 1098 revealed that by virtue of compensating errors, the NE corner of Section 16 as established by said Survey was still located within acceptable limits. Thus, with the expenditure of much time and effort, and being no further ahead, it was determined to remeasure the topographic calls noted in the government survey record and equate same with the true location of surrounding corners. As a result thereof, a theoretical position for the NE corner of Section 16 was computed falling some 60 feet South of the 2" iron pipe set in 1958. A careful search in this area led to the recovery of a notched stone from which position the quarter corner to the South was then found within 10 feet of its theoretical location according to proportion against record holding said stone for the true section corner.

With a pro-rata relationship thus established against the 1891 government survey, in conjunction with a definite tie to a vertical rock face falling exactly 14 chains South of said notched stone according to record, said stone was accepted for the monument set in 1891 by Peter Applegate marking the true position for the NE corner of Section 16.

Being satisfied that the NE corner of Section 16 had been recovered, a thorough search was made for original evidence relative to the N 1/4 corner of Section 16 without success. Accordingly, a single proportion location was held for said quarter corner thus providing all corners necessary for the subdivision of Section 16 as shown on the attached plat.

Data relative to corners found or set are as follows:

Section Corner 8 9 Coords: 10903.920  
17 16 49.174

Fd. 1" iron pipe (with pot metal filled expander) extending 2 ft. above ground in mound of rocks per CS 1961 re-estab. notes.

Section Corner 10 11 Coords: 10562.969  
15 14 10561.413

Fd. stake hub set for cor. during course of Survey 1098. Meas. to existing witness trees indicate hub in satisfactory position. Accordingly, I replace same with a 1"x36" iron pipe with br. cap suitably mkd. from which

- A Madrone, 15 ins. dia., scribe intact, brs. N 49° E 24.21 ft.
- A Doug. fir, 25 ins. dia., healed faces, brs. S 66° E 21.40 ft.
- A Doug. fir, 18 ins. dia., healed faces, brs. S 14° W 31.15 ft.

There being no remaining witness tree in the NW quadrant, I take a new tree:

- A Doug. fir, 13 ins. dia., brs. N 42° W 31.62 ft.  
mkd. T33S R2E S10 BT

Section Corner 16 15 Coords: 5309.327  
21 22 5324.115

Fd. BLM br. cap mon. & witness trees per gov't. record.

Section Corner 9 10 Coords: 10539.633  
16 17 5323.604

Fd. stone 14"x16"x18" with 4 grooves on S face and 3 notches on E face adj. on W to md. of earth & small scattered stones undisturbed

SURVEY NARRATIVE TO COMPLY WITH PARAGRAPH 209.250

OREGON REVISED STATUTES

Survey for: Olson - Lawyer Lumber Company  
 7890 Agate Road  
 White City, Oregon 97501

Survey by : Charles H. Hurst, L.S.  
 28 North Oakdale  
 Medford, Oregon 97501

Bearing : Based on the meridian for Recorded Survey No. 1098

Purpose : To subdivide Section 16, T. 33 S., R. 2 E., W.M., Jackson County, Oregon, in order to monument the corners and define the boundaries of the West Half of the Northeast Quarter thereof.

PROCEDURE

In that controversy has existed relative to the positions for the NE and N 1/4 of Section 16 as established by Recorded Survey No. 1098, a thorough search of existing records revealed the following:

- 1924 A COPCO survey crew established an approximate N 1/4 corner for Section 16 during a location survey for Power Line 6 in 1924 at government record East 2640 feet from the NW corner of Section 16 without reference to the retracement notes of 1891. No evidence of the original corner or bearing trees was found at that time. This location was perpetuated by Recorded Survey No. 1098 and State coordinates subsequently were assigned thereto by the Oregon State Highway Department prior to the obliteration of said corner during highway reconstruction.
- 1944 A COPCO survey crew established an approximate NE corner of Section 16 by producing a line through the E 1/4 corner of Section 9 at double distance from the NE corner of Section 9 in order to establish a point of beginning for a survey of property subsequently conveyed by COPCO to Joseph B. Dobbyn ( D.R. 230-471, recorded May 20, 1941 ). Original field notes for this survey reference an old fence corner as falling 13.3 feet North and 30.1 feet East from the approximate corner set. No evidence of the original corner was noted.
- 1950 State coordinates were assigned to fence corner noted above and called the NE corner of Section 16 in connection with an aerial mapping project for the Oregon Highway Department.
- 1958 Section 10 was subdivided ( Recorded Survey No. 1098 ) and a 2" iron pipe was set by double proportion against government record for the NE corner of Section 16. Original field notes for this survey reference the same fence corner tied by COPCO in 1940 and the mapping project in 1950. This fence corner falls 38.35 feet North and 128.93 feet East from the 2" iron pipe and since has been obliterated
- 1966 The U.S. Army Corps of Engineers found a BLM location poster referencing the above mentioned monument and on the basis of data written thereon set a hub for the corner which was found 1.94 feet NE'ly from the 2" iron pipe. A Report of Survey Monument Recovery was filed and Corps coordinates were assigned to the hub as the section corner, said pipe monument being overlooked.

Analysis of the above data in relation to the government survey record of 1870 and 1891 engendered a deep conviction that the stone marking the section corner might still be recovered in the general area as bracketed by State and Corps coordinates.