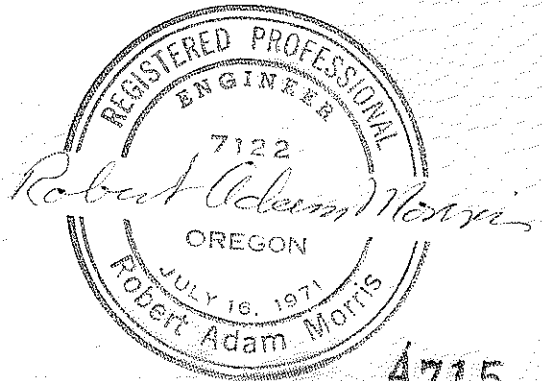
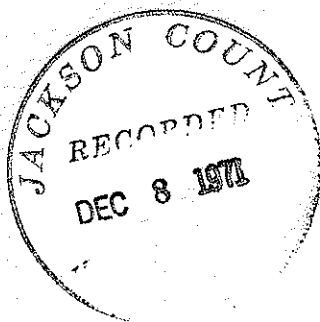
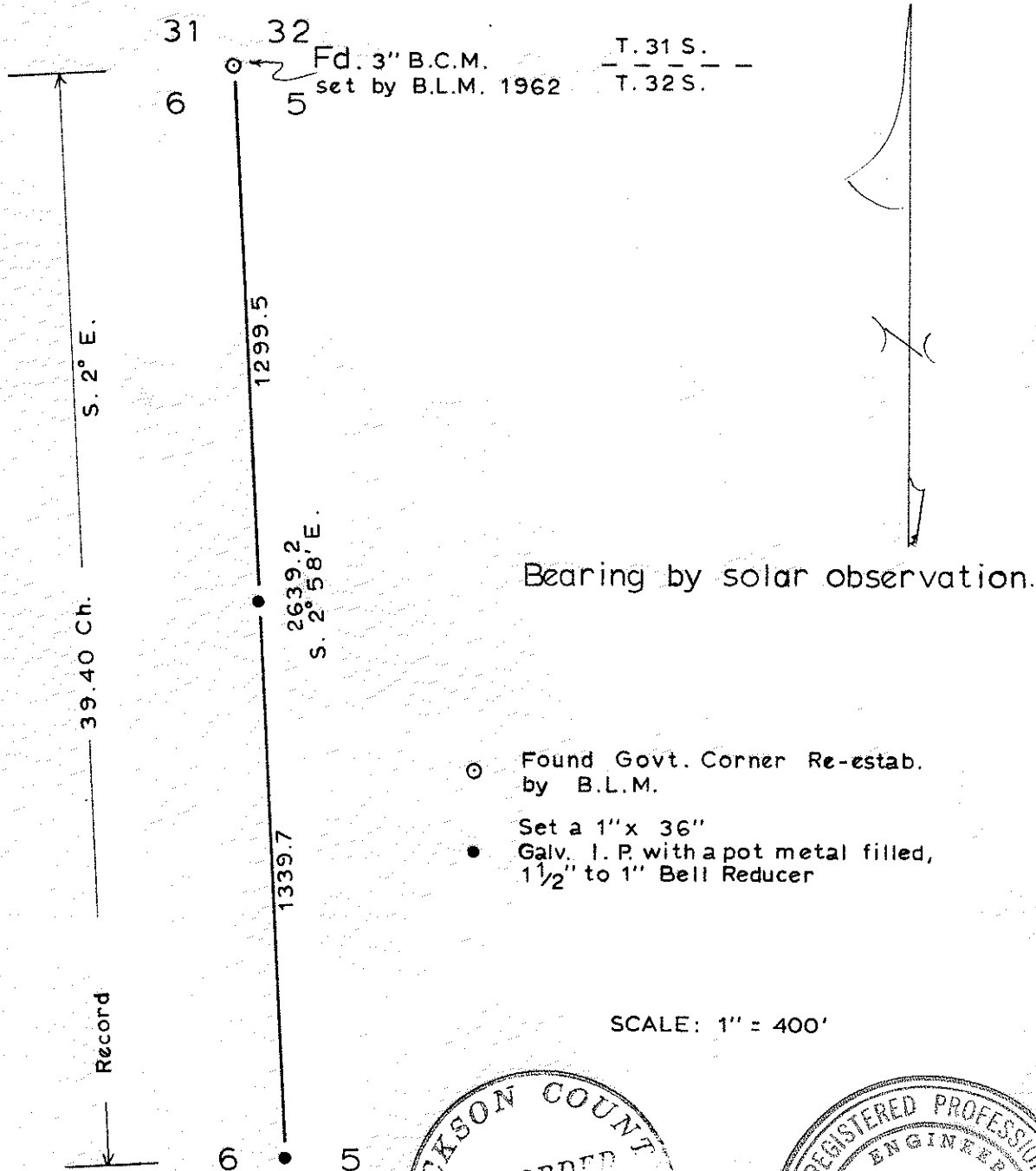


BOISE CASCADE CORPORATION

P. O. BOX 100 MEDFORD, OREGON

SURVEY BY: ROBERT ADAM MORRIS
DECEMBER 2, 1971

TOWNSHIP 32 S. RANGE 3 E. W.M.



SURVEY NARRATIVE TO COMPLY WITH O.R.S. 209.250

FOR: Boise Cascade Corporation
P. O. Box 100
Medford, Oregon 97501

PURPOSE: To establish the N 1/16 corner 6 | 5, T32S, R3E, W.M.

PROCEDURE: Ran a random transit traverse from the section corner common to Sections 31 and 32, Township 31 South, Range 3 East and Sections 5 and 6, Township 32 South, Range 3 East south to the 1/4 corner common to Sections 5 and 6, Township 32 South, Range 3 East.

At the 1/4 corner common to Sections 5 and 6 found the original Section 5 bearing tree now a 21" Douglas fir with scribe visible. At the record bearing and distance from this tree set a 1" x 36" galvanized iron pipe 24" in the ground capped with a 1 1/2" to 1" bell reducer filled with pot metal and stamped as shown below:

RE 7122
1/4
6 | 5
T32S R3E
1971

From which a 15" Douglas fir bears S37 1/2° W a distance of 56.2 feet, scribed 1/4 S6 - BT.

At the N 1/16 corner common to Sections 5 and 6 set a 1" x 36" galvanized iron pipe 24" in the ground capped with a 1 1/2" to 1" bell reducer filled with pot metal and stamped as shown below:

RE 7122
N 1/16
6 | 5
T32S R3E
1971

From which a 11" Douglas fir bears S84 1/2° W a distance of 52.7 feet scribed 1/16 S6 - BT and a 20" hemlock bears N69 1/2° E a distance of 15.6 feet scribed 1/16 S5 - BT.

All distances and bearings taken to the face of the upper blaze. Magnetic declination set at 20° East.

December 2, 1971

