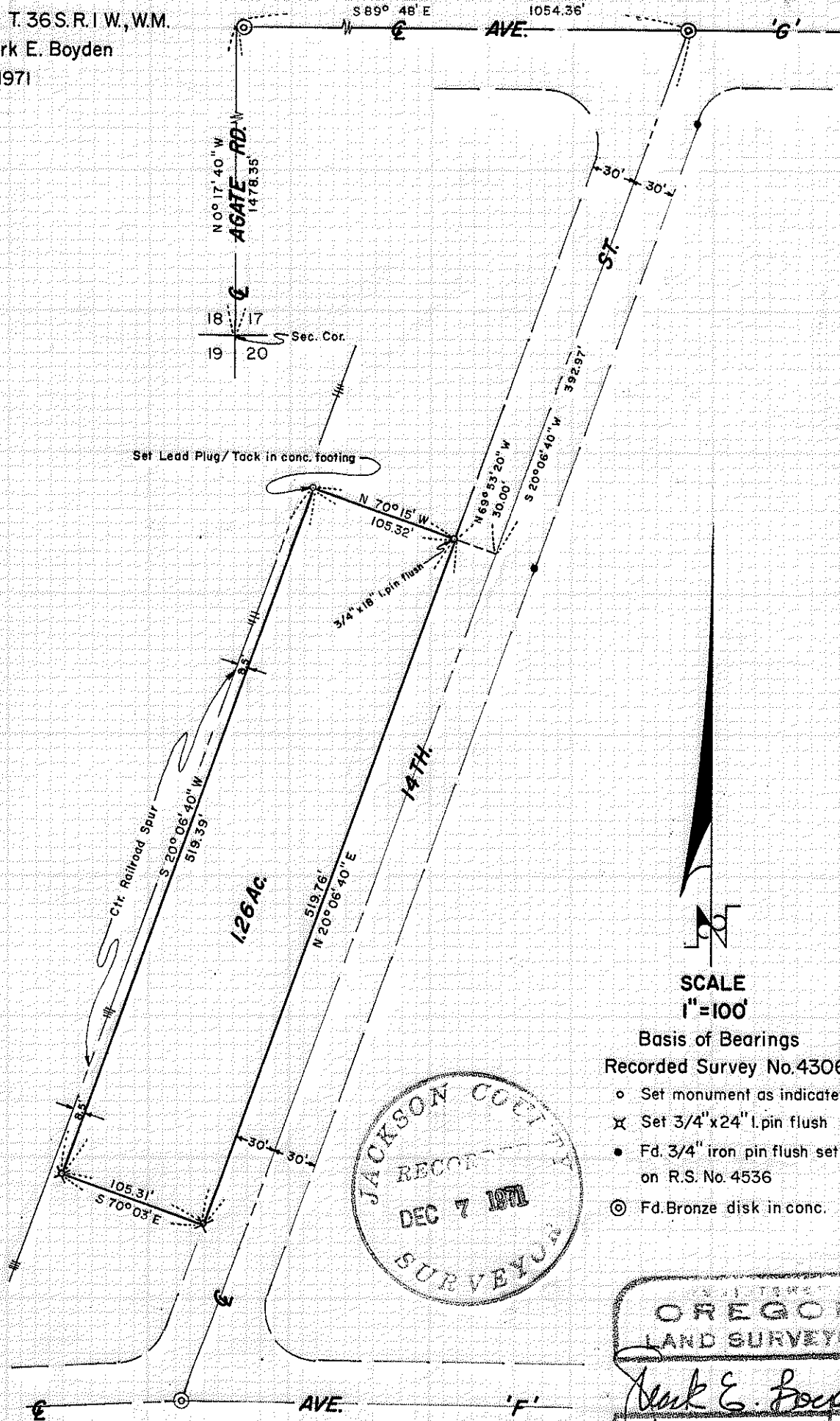


4711

Survey For:

WHITE CITY CORPORATION

Located in the SW1/4
Sec. 17, T. 36 S. R. 1 W., W.M.
By: Mark E. Boyden
Dec. 2, 1971

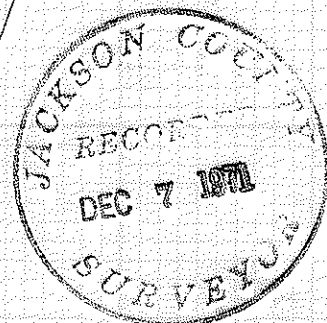


Set Lead Plug/Tack in conc. footing

SCALE
1"=100'

Basis of Bearings
Recorded Survey No. 4306

- Set monument as indicated
- ✕ Set 3/4" x 24" l. pin flush
- Fd. 3/4" iron pin flush set on R.S. No. 4536
- ⊙ Fd. Bronze disk in conc.



MARK E. BOYDEN
NOVEMBER 8, 1971
MARK E. BOYDEN

4711

SURVEY NO. 4711

SURVEY NARRATIVE TO COMPLY WITH O.R.S. 209.250

FOR: White City Corporation
White City, Oregon

PURPOSE: To monument and describe an industrial parcel.

PROCEDURE: From monuments previously set or utilized on Recorded Survey No. 4536, enclosed the subject parcel by random traverse, monumenting the same as shown on the map to accompany this report.

December 2, 1971

