

4652

Survey For:

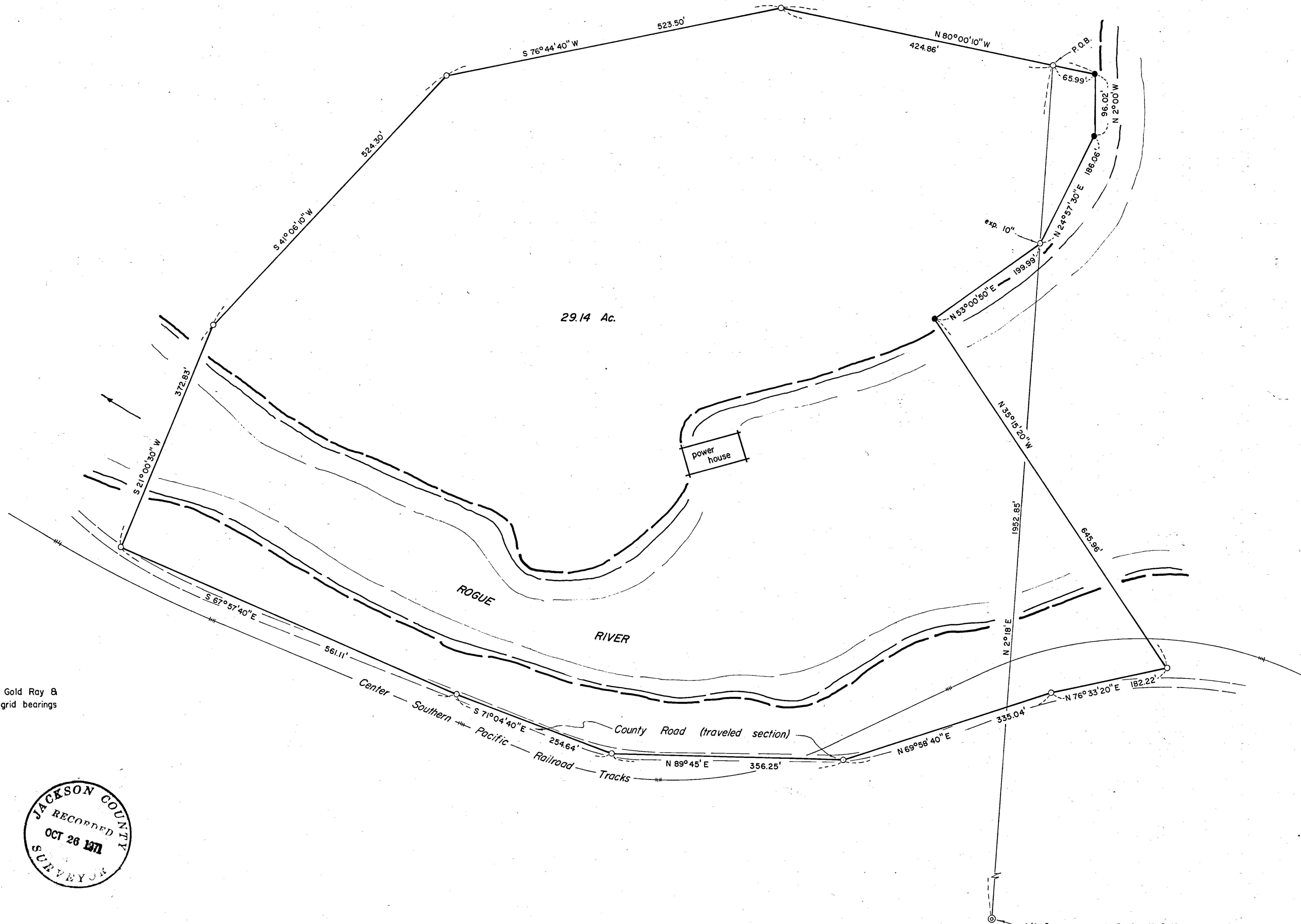
PACIFIC POWER & LIGHT CO.

Located in the South 1/2 of

Sec. 18, T.36S., R.2W., W.M.

By: Mark E. Boyden

Oct. 26, 1971

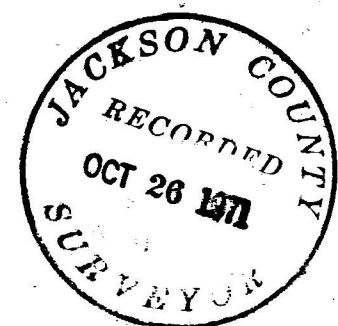
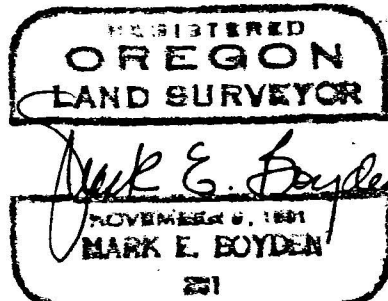


SCALE: 1" = 100'

○ set 3/4" X 18" iron pin flush unless otherwise indicated

● set 3/4" X 30" iron pin flush

BASIS OF BEARINGS:
 Oregon State Highway Department
 traverse points 40 to 41 on the proposed Gold Ray &
 John Day Drive Highway (F.A.S. 925) with grid bearings
 decreased in azimuth by $\theta = 1^\circ 42' 00''$



1/4 Corner common to Section 18 & 19
 found 1/2" iron pipe
 set a 1" X 36" galv. iron pipe with a 2 1/2"
 bronze cap exposed 12" over the 1/2" iron pipe

The said pipe was accepted as the best remaining evidence for the Quarter Corner. Set a 1" x 36" galvanized iron pipe over said 1/2" pipe, with a 2 1/2" bronze cap stamped:

T36S, R2W
1/4 18 Cor.
19

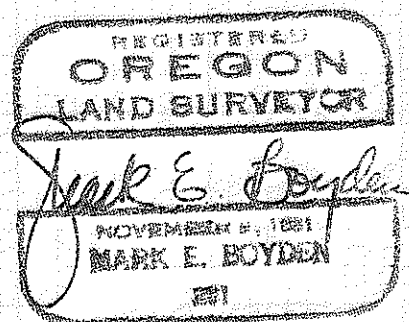
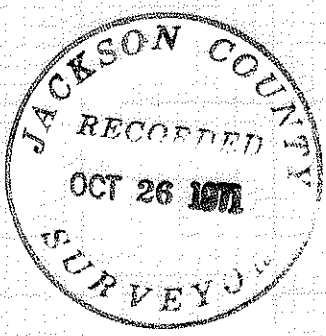
L.S. 281 , 24" in the ground for corner,
from which:

Scribed a 3" Black Oak "1/4S - BT" which bears S33° 52' E, 51.1 feet to the face of the lower blaze.

Scribed a 4" Laurel (in a clump of Laurels) "1/4S - BT" which bears N 75° 50' E, 30.0 feet to the face of the lower blaze.

A coordinate closure around the subject premises described in Deed Volume 135, Page 388 did not close within reasonable modern-day limits, so a coordinate adjustment was computed and the tract then monumented as shown on the map to accompany this report.

October 26, 1971



SURVEY NARRATIVE TO COMPLY WITH O.R.S. 209.250

FOR: Pacific Power and Light Company
Public Service Building
Portland, Oregon 97204

PURPOSE: To monument and re-describe the parcel conveyed to the California-Oregon Power Company described in Deed Volume 135, Page 388, being located in the South-half of Section 18, Township 36 South, Range 2 West, W.M.

PROCEDURE: Re-traced the State Highway Survey of the Gold Ray and John Day Drive Highway (F.A.S. 925) through many of their 'P' line coordinated points in the vicinity of the subject premises. Also tied these points and other random points, enclosing the subject premises by multiple enclosed triangles, triangulated across Rogue River,

From this data, made physical and computed ties to coordinate the positions of the Quarter Corner common to Sections 19 & 20, and the Northwest corner of Section 18 of T36S, R2W, W.M. In the vicinity of the Quarter corner common to Sections 18 and 19 found an old 1/2" iron pipe in a very old mound of stone. All evidence of the original corner and its accessories have been destroyed by periodic fires of past years. This pipe position was then coordinated with the said adjoining corners, the tie to the Southern Pacific Railroad tracks per the Railroad right-of-way map and also remant remains of fence lines around the subject premises. It was concluded that said pipe is in a very reasonable location for the Quarter corner utilized in the original power site survey by Harry E. Foster, C.E. in September of 1911. Ties to the said adjacent Government corners indicates a more than average inconsistency in the original Government Survey, possibly accountable by the extreme roughness of terrain and the crossing of Rogue River. The Easting tie to the present centerline of the Railroad tracks agrees with the right-of-way map within reasonable limits for said railroad ties made in the 1880's